

## PRELIMINARY REPORT OF THE ARCHAEOLOGICAL SURVEY AT APOLLONIA AD RHYNDACUM IN MYSIA

Serdar Aybek – Ali K. Öz

### Özet

Makalede 2002-2003 yıllarında, şimdiki adıyla Kültür Varlıkları ve Müzeler Genel Müdürlüğü'nün izniyle Bursa ili Gölyazı Beldesi'nde gerçekleştirilen 20 günlük araştırmanın sonuçlarına değinilmektedir. Literatür taraması, müze araştırması ve arazi çalışması şeklinde üç bölümde sürdürülen incelemeler halen devam etmektedir. Makalenin arkeolojik bölümleri ve metni Dr. S. Aybek, mimari çizimleri ve restitüsyon çalışmaları A. K. Öz tarafından yapılmıştır. Öncelikle bölgede çalışmamıza olanak sağlayan Kültür ve Turizm Bakanlığı'na ve araştırmalar süresince yardımlarını esirgemeyen Gölyazı Belediyesi ve Bursa Arkeoloji Müzesi çalışanlarına teşekkürü borç biliriz.

Marmara Denizi'nin güneyindeki yerleşim Bursa'nın yaklaşık 35 km. güneybatısındadır. Apollonia Ad Rhyndacum, Ulubat (Apoloyont) Gölü'nün kuzeydoğusunda gölün içine uzanan yarımada üzerinde kuruludur (Fig.1-2). Anadolu Işık Tanrısı Apollon'un kentin koruyucu tanrısı olması ve burada bir tapınağının bulunması şehrin adının Apollonia olarak belirlenmesinde önemli etkindir. Ancak Anadolu'da bulunan aynı isimli diğer altı kentten ayırt edilebilmesi için "Mustafakemalpaşa Çayı Üzerindeki Apollonia" anlamına gelen "Apollonia Ad Rhyndacum" kullanılmıştır. Mysia-Bithynia sınırındaki kente ait en eski buluntular MÖ 4. yy. sikkeleridir (Fig.40 Nr.1-2). Bazı kaynaklarda Miletos'un kolonisi olarak kurulduğu belirtilen şehir Pergamon Krallığının gücünü arttırdığı dönemlerde bu gücün hakimiyeti altına girmiştir. Antik kente ait mimari kalıntılar yüzeyde kaldığı ölçüde görülebilmekte ve buluntular da genellikle kaçak kazılar yoluyla ele geçmektedir. Özellikle Kızada'daki Temenos (Fig.12-15), Antik Stadion (Fig.17), Tiyatro (Fig.16) ve Nekropol alanı (Fig.18-21) şehrin Antik Çağ'da oldukça zengin ve büyük olduğuna işaret etmektedir.

### Introduction

The site is located south of the Marmara Sea (ancient Propontis), 35 km. west of Bursa in northwestern Turkey (Fig.1-2). Our first visit to the site was in 2000. After this brief visit we have decided to apply for a research permit at the Ministry of Culture and Tourism, especially after the habitation area treating the site expanding towards the

ancient theatre and the stadium. Thus, research on the site started in 2002. The major objective of the work carried out in 2002-03 was to document the structures and other archaeological remains and control some former plans and drawings of the city. In 2002-2003, detailed researches were carried out in three sections; literary researches, fieldwork and museum work in Bursa.



## **I. Topography**

The most prominent feature of the landscape is the Lake Apolyont (ancient Apolloniatis), which is located south of Propontis<sup>1</sup>. This is a large and shallow lake with small islands and extensive reed beds; it is an important habitation area for the wetland birds during summer and transitional periods. The reeds are found mainly on the western and northwestern shores of the lake, along with olive groves, scrub, and wet meadows. The lake is linked to the sea via the Kocaçay river, while Mustafakemalpaşa river (ancient Rhyndacus) constitutes the main river west to the lake<sup>2</sup>.

Apollonia ad Rhyndacum is located northeast of Lake Apolyont. It is situated on a peninsula, which penetrates straight into the lake by its northern shore; it narrows at two points, where maximum width is less than 100 m. At its extreme it forms a low hill, almost circular in shape, and entirely cut off from the mainland when the water level of the lake rises (Fig.3-4). Modern Apollonia, called Gölyazı, is situated on this part of the area (Fig.5). Gölyazı is a small fishing village with steep, narrow, and complex streets, and tall, projecting timber-framed houses (Fig.6-7).

## **II. Historical Background**

The site was first identified by Hamilton in 1842<sup>3</sup> and during the 19. century it was visited by a series of western travelers, who published several brief accounts on its ruins<sup>4</sup>. But most of them were mainly interested on Cyzicus and Daskyleion; thus, they usually mentioned Apollonia only in a brief manner. Le Bas drew one small plan in 1888. He also

made some drawings of some of the ancient buildings and sculptural works from the site<sup>5</sup> (Fig.8). Nothing seriously, however, was done until 1986, when B.Yalman wrote a short article<sup>6</sup> concerning ancient Apollonia and more recently Abmeier has published a full account on Apollonia's history, especially concerning the epigraphic evidence<sup>7</sup>. These publications formed a basis for our current research. Our work focused on the remains at Zambaktepe (St. George Hill) and Kız Adası since the most important buildings of the ancient city were built there. But also other small islets have been visited<sup>8</sup> (Fig.2). The first season was quite productive as we were able to draw some preliminary conclusions concerning the interpretation of the monuments, which will form the basis of our prospect study.

The ancient sources do not give information on the date and circumstances of the foundation of city. Some additional information, however, can be retrieved by the numismatic and epigraphic sources. The best evidence comes from the middle of the 2. century B.C., a decree from Miletus on the occasion of the resumption of relations between the colony and the main city. According to this document Apollonia sent envoys to Miletus to renew the tie of 'kinship', as it was actually one of its colonies<sup>9</sup>. Numismatic evidence, however, shows that the settlement was probably established much earlier, even before 400 B.C.<sup>10</sup>

According to Wroth<sup>11</sup>, the earliest city coins belong to the period between 450-330

<sup>1</sup> RE II.1, 115-15.

<sup>2</sup> For a detailed geography of the lake and its vicinity see Philippson 1913, 46-50; Ramsay 1896, 195-196.

<sup>3</sup> Hamilton 1842, 80-85.

<sup>4</sup> Le Bas 1888, 38, 117, 149, Pl. 45-49, 54, Fig. 135-3; Hasluck 1910, 68-73.

<sup>5</sup> Le Bas 1888, Pl. 47.

<sup>6</sup> Yalman 1987, 7-12.

<sup>7</sup> Abmeier 1990, 1-16.

<sup>8</sup> Monastary (Mutlu) Islet, Terzioglu Islet and Arifmolla Islet contain Late Antique remains. For detail see Ötügen 1996, 14.

<sup>9</sup> Ehrhardt 1983, 135; Gorman 2001, 247.

<sup>10</sup> Wroth 1964, 8-13.

<sup>11</sup> *ibid*, 8-13.



B.C. (Fig.39, Nr.1-3). These coins provide also with additional information on the commercial activities of the city and religious beliefs of the people.

The wealth and big population of the city made it possible to be able to mint silver coins in early periods. Usually a reverse anchor was used on the coins during this period. It is certainly related with cray-fish hunting which Apollonian economy was mainly demanding on. Another popular motif seen in the early coins is *swastika*. This is usually used at reverse side in incus. Also gorgoneion motives are frequently used. The Apollo sanctuary stood on the small islet, called Kızada today. The Apollo Temple and the cult statue were used on the coins especially during the Roman Period (Fig.39 Nr.8-11). Moreover, Apollo head, kithara, plektron and Sauroktonos type Apollo depicted in his temple are used frequently after the building of the temple for the chief god of the city from Hellenistic period until the end of the Late Roman Period.

Based on the current evidence, it seems more plausible to suggest a late 3<sup>rd</sup> or early 2<sup>nd</sup> century BC. for a date for the foundation of the city, most probably under Pergamene influence<sup>12</sup>. The city prospered in Roman times until early 2<sup>nd</sup> century A.D. In 124 A.D. it was severely damaged by an earthquake, which affected Bithynia and southern Mysia. Later, Emperor Hadrian visited Nicomedia and Nicaea in Bithynia, and Cyzicus in Mysia, all of them were damaged by the earthquake as well<sup>13</sup>. Although the literary sources do not mention Hadrian's visit to Apollonia, his visit there seems highly plausible, as an inscription from a small,

rectangular altar (Fig.43) mentions his name (Savior and Founder)<sup>14</sup>.

In Byzantine times Apollonia consisted part of the diocese of Pontus with the name of Theotokiana<sup>15</sup>. The date of its final capture is not certainly known, but may be placed in the early years of the 14. century.

### III. Fieldwork

The fieldwork at the peninsula and the island consisted of documentation and recording of the architectural remains. In order to make additions on the older plans, remains of the fortification wall, Apollo Temple, theatre, stadium, necropolis and Byzantine settlement on the islands have been re-determined.

#### 1. Temenos

The portrait of Apollo was depicted on coins from the early Hellenistic period, as he was the city's patron<sup>16</sup> (Fig.39). Some tentatively information about the cult statue of Apollo can be extracted from them<sup>17</sup>. The most common type of Apollo description was that of the Sauroktonostype; during the reign of Galliano III., the depiction of Apollo inside a tetrastyle temple became the most dominant type<sup>18</sup> (Fig.39 Nr.11).

To the southwest of the village, at a slight distance from the shore, the low island called Kızada, still partly preserves the massive quay walls of a Hellenistic *temenos*. These walls formed a rectangle measuring

<sup>14</sup> Abmeier 1990, 15; " ΑΓΑΘΕ ΤΥΧΕ ΑΥΤΟΚΡΑΤΟΡΙ ΚΑΙΣΑΡΙ ΑΔΡΙΑΝΩ ΟΛΥΜΠΙ Ω ΣΩΤΕ ΡΙ ΚΑΙ ΚΤΙΣΤΗ "

<sup>15</sup> Ötügen 1996, 5; Yalman 1987, 10.

<sup>16</sup> Wroth 1964, 9, Nr. 10

<sup>17</sup> Fritze 1913, 77, Nr.237, K.37, Taf. IV, 24 Antoninus Pius; SNG, *Mysien* 1050-1458, Berlin 1957, Nr. 1066 Gallienus.

<sup>18</sup> Hasluck 1910, 72; SNG, Nr. 1066; Fritze 1913, Nr. 237.

<sup>12</sup> Abmeier 1990, 6.

<sup>13</sup> *ibid* 15; Boatwright 2002, 111.



approximately 100 x 140 m. The entrance-way was arranged in a semi-circle shape, with steps leading towards the island (Fig.11).

The *temenos* wall originally stood about 1.50 m. above the water level. According to the old drawings made by Le Bas<sup>19</sup>, the *temenos* wall was provided with three sets, at different heights, of pierced corbels for mooring the boats. Also within the wall he found two fragments of Ionic columns, and one piece from the entablature from which he restored a hexastyle temple within a colonnade, surrounded by an *exedrae*<sup>20</sup> (Fig.9). After the preliminary examination of this plan we first thought that it was an output of a completely imaginary work. But the topographic plan drawn by Gölyazı Municipality in 1995 seems to confirm Le Bas's *temenos* (Fig.10). Last year we were not able to walk inside the *temenos* due to the intensive vegetation covered the area. Although some aspects of Le Bas's suggestions seem to be authentic, more work need to be done in order to clarify this building and its function. Based on current evidence, it would not seem inappropriate to suggest that Apollo Temple might actually have stood on this islet. Another interesting indication of the semi-circular entrance described by Le Bas is the arrangement of the reeds as they grow only in water; their shape is quite clear and informative (Fig.11).

In the first part of the semi-circular entrance, the encircling wall was built with huge limestone blocks and did not use any clamp (Fig.13-14). There are many limestone sources in the vicinity of the lake. Most of the buildings of the city were built with the same material, such as the *temenos*, the theatre and the stadium. The northeast corner is damaged, although corner blocks can be

identified clearly under the water (Fig.12). The east side is the best-preserved part. Its maximum height is 1.50 m. In the eastern wall some *in-situ* boat-moorings are still visible (Fig.15).

## 2. Theatre (Fig.16)

The rock-cut theatre was built onto the south slope of Zambaktepe. It overlooks the modern settlement and it is hardly damaged (*cavea* is completely damaged). Most of its seat blocks (*scaenae*) were reused in the late antique city wall. The diameter of the *cavea* is approximately 75 m. It had two *diazomata* and a capacity of an approximately 4000 spectators. In terms of dimensions, this calculation derives from a similar theatre at Metropolis in Ionia; which could host 4000 spectators. We found two seat blocks near the building; their average height is 36 cm. and their width 67 cm. (Fig.42). Evidence for an *analemma* walls were also traced.

## 3. Stadium (Fig.17)

The Stadium is located on the northern side of the Zambaktepe . But unlike the theatre only its west side was built on the slope. Le Bas's plan indicates the location of the seats on the west side, though nowadays nothing is visible anymore. Unfortunately, nothing can be said for the eastern side. The stadium is still in use for the sport activities of the village. Seat blocks have an average height of 33 cm and are 65 cm in length (Fig.42). Some architectural features of two social buildings (theatre and stadium) are common.

## 4. Necropolis

The Necropolis is located in the eastern part of Zambaktepe, on both sides of the ancient road. The road was vital for the city as it was the only connection with the

<sup>19</sup> Le Bas 1888, Pl.45-49.

<sup>20</sup> *ibid.*, Pl. 1-II,2 (Architecture).



mainland (Fig.18). The width of the road is 2.50 m. and probably it was connected in the north with the Prusias-Cyzicus main route. Numerous milestones have been found along this route, especially near Cyzicus and Prusias<sup>21</sup> which forms the modern Bursa - Erdek and Gölyazı road.

Deep wheel tracks and holes indicate that it was used intensively during the ancient times. Particularly holes are interesting (Fig.19), as they might have supported planks to help by the transportation of stone blocks from the quarry to the city. All of them were carved onto the slope<sup>22</sup> (Fig.20). The necropolis is damaged due to the illicit excavations. We have detected three tombs with podia along the ancient road (Fig.21). But more buildings must have existed in the vicinity. There are other indications for that, such as a single sarcophagus or inhumations, at the south side of the road.

### 5. Modern Settlement

We believe that the ancient city must have occupied the same area as the Gölyazı village today. Interestingly enough, it seems that the village follows the ancient grid plan<sup>23</sup> (Fig.40, 47). Some ruins in this part indicate connection with the antiquity. The most impressive example is the 'podium

house' (Fig.22-23, 41). One can think of it as a small temple, a tomb, a monument or even part of the harbour installments. It is preserved *in situ* and its location is correlated well with the ancient city plan. It is difficult to tell what the function of this building was. But its close proximity to the lake might have something to do with it.

The modern settlement is encircled by the fortification wall (Fig.47). Some parts of the wall date in the Hellenistic / Roman period and the rest in late antique and medieval times; in the latter case re-used materials can easily be detected. Another striking monument is undoubtedly the square tower, the so-called Kastro, a free-standing building nowadays, located back of the Town Mosque. Inscribed epistyle blocks<sup>24</sup>, presumably from a *stoa* erected in honor of Hadrian, can be found in the Kastro as secondary use (already mentioned above). The southern tower was visible at the beginning of the 19. century and was drawn by Le Bas<sup>25</sup>. Today, almost half of it left under the ground (Fig.24-26).

Le Bas saw one more piece and made a sketch of another inscribed epistyle blocks in secondary use which is now missing at Kızada (Fig.27). This was probably another part of the *stoa* or portico epistyle inscription (see fn. 24). In addition, the rectangular altar mentioned above (see Fig.43 fn. 14), now re-used in a modern house, bears an interesting inscription where Hadrian is mentioned as *savoir* and founder.<sup>26</sup>

<sup>21</sup> French 1992, Fasc.2, an Interim Catalogue of Milestones Part 1, Map 10, Istanbul sheet, especially 213, 214, 216, 218, 221, 302, 304, 305 and 306 numbered mile stones refers to this route.

<sup>22</sup> I would like to thank J. J. Coulton for helping us to clarify their probable function. For similar restitution drawings see Orlandos 1968,24.

<sup>23</sup> This subject was determined in the report of conservation and improvement plan of Gölyazı Village by E. Göksu in 1998. It is mentioned there, that *insula* system and grid plan of the island can be seen in the settlement plan of the modern village. Measurements of *insula* might have been taken approximately 30/30 m. Göksu 1998.

<sup>24</sup> Abmeier 1990,15;  
[ΑΥΤΟΚΡΑΤΩ ΚΑ] ΙΣΑΡ ΤΡΑΙ[ΑΝΟΣ ΑΔΡΙ]  
ΑΝΟΣ ΑΥ[ΤΟΥ]ΣΤΟΣ ΘΕΟΥ [ΤΡΑΙΑΝΟΥ  
ΝΙ]ΟΣ ΘΕΟΥΝΕ[ΡΩΝΑ ΝΙΟΝΟΣ ΤΗΝ ΣΤΟΑΝ ?]  
ΤΗ ΠΟΛΕΙΚΑ [ΤΕΣΚΕΥΑΣΕΝ].

<sup>25</sup> Le Bas 1888, 38, Pl. 48.

<sup>26</sup> Abmeier 1990, 15.



It seems that the northern wall was used as a terrace wall at the same time, where buildings probably once stood. The eastern wall can be seen *in situ*, with boat moorings on it<sup>27</sup> (Fig.30). The western wall was completely repaired in the late antique times with ancient building materials, such as the stadium seat blocks and arch stones (Fig.28-29).

#### **6. Modern Greek Church (Fig.31)**

We know that the major church of the town was on top of the Zambak Tepe called H. Georgios (Fig.8) but it was destroyed in the late 19. century. Afterwards, another church built on the southern shore of the lake with the same name. It is dated in the 19. century and restoration work is going to start next year. Our main interest of the building was mostly on the reused wooden pillar base, the round Roman altar, and the Byzantine capitals<sup>28</sup> (Fig.32-34). During our fieldwork we have also visited three islands. The Monastery Island, in particular, seems to be rather interesting, as it appears to have hosted a huge late antique complex. Other islands also include some late antique ruins<sup>29</sup>.

#### **IV. Museum Work**

During our work at the Bursa Archaeological Museum we recorded all archaeological materials and coins from Apollonia. There were 34 small finds (mostly unguentaria) and 20 coins<sup>30</sup> (most of them from the Roman Period). Three coins belong to other cities such as Metropolis in Ionia, a city of Lydia and a Roman colonial

city likely Antiochia ad Pisidium or Apameia Myrleia<sup>31</sup>. These might be commercially related regions with Apollonia.

The armored statue<sup>32</sup> (Fig.35), Attis relief as a table supporter<sup>33</sup>(Fig.36) and terra cotta grotesque figure *rython*<sup>34</sup> (Fig.37) are important finds from the city. In addition, a Gorgoneion relief on a sarcophagus located at Zambaktepe Hill (near the theatre) is very interesting because of the similarity between the Gorgoneion head style and the city coins of the early periods<sup>35</sup> (Fig.39, Nr.1-3). This fragment originally belongs to the Roman period but since it represents the continuity in the artistic manner, it bears additional importance (Fig.38).

#### **V. Conclusion**

Although the modern inhabitants of Apollonia protect the lake environment and its natural surroundings, the archaeological heritage is almost neglected. This is very striking, since as even today people at Gölyazı have a similar way of living to that of the people in antiquity; their economy mainly demand on cray-fish hunting in the same lake, they are using the same recreation

<sup>27</sup> For the same fragments from Knidus see Bruns-Özgan 2002, 101, Fig.126.

<sup>28</sup> Ötügen 1996, 178, BM9, Taf.29,3.

<sup>29</sup> *ibid*, 14, for findings see also 40-41.

<sup>30</sup> Some of them published in *BMC Greek Coins*, *NumChron* and *Historia Numerum*.

<sup>31</sup> We thank to K. W. Harl for this evaluations.

<sup>32</sup> It has been dated by Vermeule and more recently by Stemmer in the Late Hadrianic-Early Antonine Periods (c. 130-150 A.D.). A head of Apollo on *pteryges*, Zeus and an eagle: Vermeule 1959, 57, Nr.202, Pl. XIV, Abb. 50; Stemmer 1978, 39, Taf. 23.3; Mendel 1908, 16, nr. 10, Fig. 8; Reinach 1930, 364, nr. 3.

<sup>33</sup> It must be from late 2.-3. century A.D., with polished surface and deeply carved with drill hair; Schwertheim 1978, 826, Taf. CXC VII, 37; Vermaseren 1987, 85, Nr. 261, Pl. LII. For earlier Pergamene examples see also Winter 1908, 358, Fig. 458b. Further parallels are of Cyzician origin: Reinach 1930, 471, Fig. 1, IV; 292, Fig.3; Mendel 1908, p.67-68.

<sup>34</sup> In light of the parallel Agora figurines and *rythons* it belongs to the 2. century A.D. and made in local workshops; Grandjouan 1961, Fig. 1036, 1041, 1043, 1045.

<sup>35</sup> Wroth 164, Nr. 3, 4, 6 (ac. 450-330 B.C.).



areas (stadium), and using the same route for transportation. They live and walk in the same streets every day. It would be a great profit to inspire them to protect the heritage of this historical site.

We hope to return to Apollonia this summer with a larger team for a more intensive research; in particular we would like to explore on Kızada in detail. Hopefully we will be able to find some more architectural elements, which will help us to reconstruct the building once stood there (Fig.44).

**Dr. Serdar Aybek,**  
Trakya Üniversitesi Arkeoloji Bölümü  
22050 Karaağaç-Edirne  
e-mail: say@turmail.com

**Dr. Ali K. Öz,**  
Dokuz Eylül Üniversitesi Arkeoloji Bölümü  
Tınaztepe Kampüsü, Kaynaklar Yerleşkesi  
35160 Buca-İzmir  
e-mail: ali.oz@deu.edu.tr



## LIST OF FIGURES

- Figure 1** Mysia and Bythina, from K. Johnston's Asia Minor Map.  
**Figure 2** Lake Apolloniatis and its surroundings, by B. Yalman.  
**Figure 3** Settlement plan of Gölyazı.  
**Figure 4** General view of the town.  
**Figure 5** Modern settlement part of the peninsula.  
**Figure 6** General view of the modern civil center and the historical houses.  
**Figure 7** One of the 19. century. timber –framed houses.  
**Figure 8** The earliest plan of Apollonia Ad Rhyndacum, drawing by Le Bas.  
**Figure 9** The Temple of Apollon on Kızada ,drawing by Le Bas.  
**Figure 10** Topographical plan of Kızada.  
**Figure 11** General view of Kızada and the semi-circular entrance of Temenos from Zambaktepe.  
**Figure 12** Northeast corner of Temenos.  
**Figure 13** West side of Temenos and the south corner of semi-circular entrance.  
**Figure 14** West side of Temenos.  
**Figure 15** East side of Temenos and the *in situ* boat-moorings.  
**Figure 16** Theatre and view of Gölyazı village.  
**Figure 17** The Stadium.  
**Figure 18** Single road of Apollonia and holes for planks.  
**Figure 19** Detail of a hole.  
**Figure 20** Illustration of the road and the function of the holes from Orlandos 1968, 24.  
**Figure 21** One of the podium tombs (M1) facing directly to the temple (see also Fig.1).  
**Figure 22** 19. century vernacular architecture on the ancient podium.  
**Figure 23** *In situ* podia detail.  
**Figure 24** The “Kastro” of city walls and the south tower in the 19. century, drawing by Le Bas.  
**Figure 25** The “Kastro” of city walls in present day.  
**Figure 26** Inscribed epistyle blocks used in the late city wall.  
**Figure 27** Missing block from Kızada drawn by Le Bas in 1890's.  
**Figure 28** West part of the city wall and arch blocks in secondary use.  
**Figure 29** West part of the city wall and stadium seat blocks in secondary use.  
**Figure 30** East part of the city wall and modern house built on it.  
**Figure 31** Major church of the town.  
**Figure 32** Reused wooden pillar base of the church (Roman round altar).  
**Figure 33** Reused wooden pillar base of the church.  
**Figure 34** Reused wooden pillar base of the church (Byzantine capital).  
**Figure 35** Armored Statue (in the exhibition at Bursa Archaeological Museum).

- Figure 36** Attis relief as a table supporter (in the exhibition at Bursa Archaeological Museum).
- Figure 37** Terracotta grotesque *rython* (in the exhibition at Bursa Archaeological Museum).
- Figure 38** Gorgoneion head from a sarcophagus and an early city coin.
- Figure 39** City coins from Classical period until Roman Age.
- Figure 40** Insula plan of the modern settlement following the ancient city plan, by A.K. Öz.
- Figure 41** Podium house plan (see Fig.24), by A.K. Öz.
- Figure 42** Cross-section of theatre and stadium seats, by A.K. Öz.
- Figure 43** Plan of the reused inscribed rectangle altar (see fn. 14).
- Figure 44** 3-D drawings of the temple, by A.K. Öz.
- Figure 45** The latest plan of Apollonia ad Rhyndacum, by A.K. Öz.



## BIBLIOGRAPHY

- Abmeier 1990 A. Abmeier, "Zur Geschichte von Apollonia am Rhyndakos", in: E. Schwertheim (ed.), *Mysische Studien. AsiaMS Band I* (1990).
- Boatwright 2002 M. T. Boatwright, *Hadrian, and the Cities of the Roman Empire* (2002).
- Bruns-Özgan 2002 C. Bruns-R. Özgan, *Knidos. Antik Kent Rehberi* (2002).
- Ehrhardt 1983 N. Ehrhardt, *Milet und seine Kolonien: Vergleichende Untersuchung der kultischen und politischen Einrichtungen* (1983).
- French 1992 D. French, *Roman Road and Milestones of Asia Minor* (1992).
- Fritze 1913 H. von Fritze, *Die antiken Münzen Mysiens* (1913).
- Gorman 2001 V.B. Gorman, *Miletos, and the Ornament of Ionia: A History of the City 400 B.C.E.* (2001).
- Göksu 1998 E. Göksu, *Gölyazi, Kentsel Arkeolojik Sit Alanı Koruma İmar Planı Açıklama Raporu, Dokuz Eylül Üniversitesi* (1998).
- Grandjouan 1961 C. Grandjouan, *Terracottas and Plastic Lamps of the Roman Period, The Athenian Agora* (1961).
- Hamilton 1842 W. J. Hamilton, *Researches in Asia Minor, Pontus, and Armenia with Some Account of their Antiquities and Geology* (1842).
- Hasluck 1910 F.W. Hasluck, *Cyzicus: Being Some Account of the History and Antiquities of that City, and of the District Adjent to it, with the Towns of Apollonia Ad Rhyndacum, Miletupolis, Hadrianutherae, Priapus, Zeleia, etc.* (1910).
- Le Bas 1888 M. P. Le Bas & S. Reinach, *Voyage Archéologique en Grèce et en Asie Mineure* (1888).
- Mendel 1908 G. Mendel, *Catalogue des sculptures grecques romaines et byzantines du Musee de Brousse* (1908).
- Orlandos 1968 A. K. Orlandos, *Les Matériaux de construction et la technique architecturale des anciens Grecs I* (1968).
- Ötügen 1996 Y. Ötügen, *Forschungen im nordwestlichen Kleinasien. Antike und byzantinische Denkmäler in der Provinz Bursa. IstMitt Beiheft* (1996).
- Philipsson 1913 A. Philipson, "Reisen und Forschungen im westlichen Kleinasien. III. Heft: Das östliche Mysien und die benachbarten Teile von Phrygien und Bithynien", in: P. Langhans (ed.), *Dr. A. Petermanns Mitteilungen aus Justus Perthes' Geographischer Anstalt* (1913).
- Ramsay 1896 A.W.M. Ramsay, *Historical Geography of Asia Minor*. Royal Geographic Society Supplementary Paper (1896).
- Reinach 1930 S. Reinach, *Repertoire de la statuaire grecque et romaine IV* (1930).
- Schwertheim 1978 E. Schwertheim, "Denkmäler zur Meterverehrung in Bithynien und Mysien", in: S. Şahin, et. al, (eds.) *Studien zur Religion und Kultur Kleinasiens: Festschrift für Karl Dörner zum 65. Geburtstag am 28. Februar 1976* (1978).
- Stemmer 1978 K. Stemmer, *Untersuchungen zur Typologie, Chronologie und Ikonographie der Panzerstatuen* (1978).
- Vermaseren 1987 M. J. Vermaseren, *Corpus Cultus Cybelae Attidisque (CCCA) I. Asia Minor* (1987).
- Vermeule 1959 C. C. Vermeule, "Hellenistic and Roman Cuirassed Statues", *Berytus XIII* (1959).
- Winter 1908 H. Winter, *Die Skulpturen. AvP VII-2* (1908).
- Wroth 1964 W. Wroth, "Catalogue of the Greek Coins of Mysia", in *A Catalogue of the Greek Coins in the British Museum* (1964).
- Yalman 1987 B. Yalman, "Apollonia Ad Rhyndacum: Gölyazi Köyü", *İlgi 37* (1987) 7-12.



Figure 1

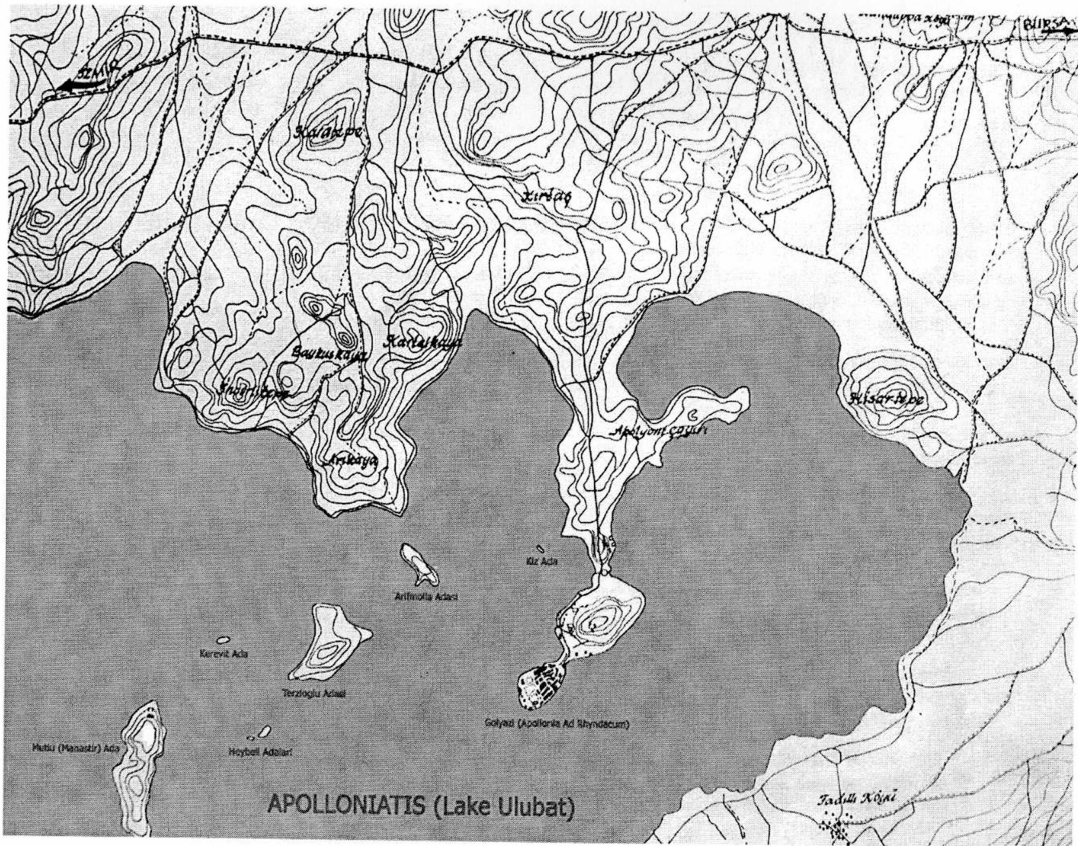


Figure 2



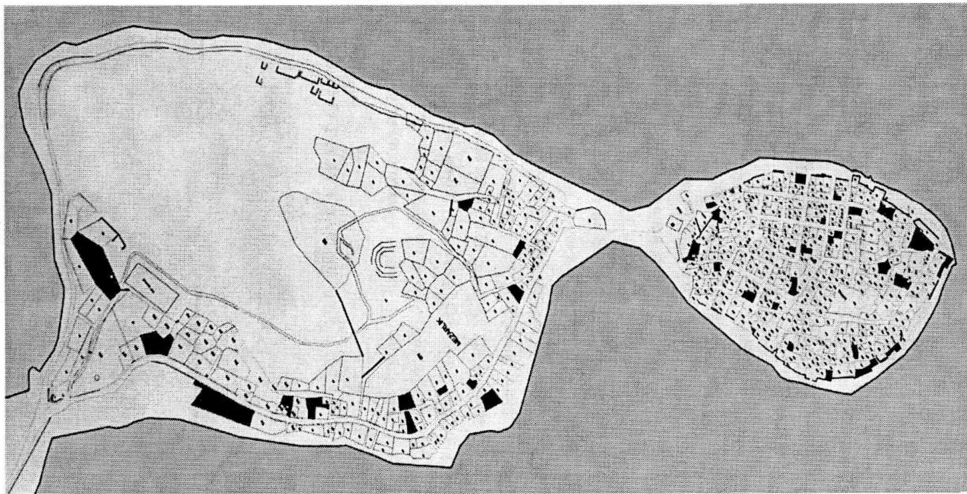


Figure 3



Figure 4



Figure 5



Figure 6

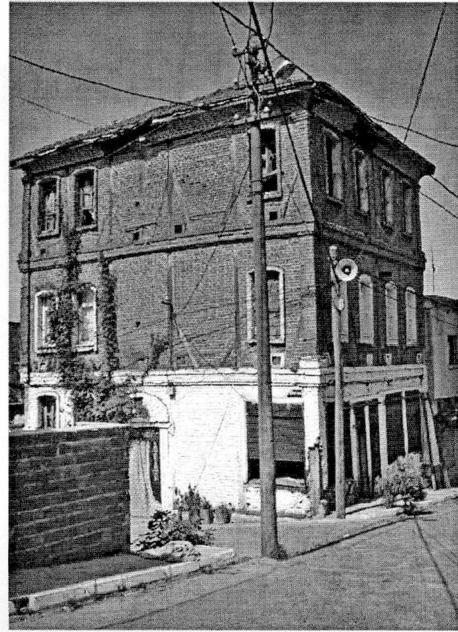


Figure 7

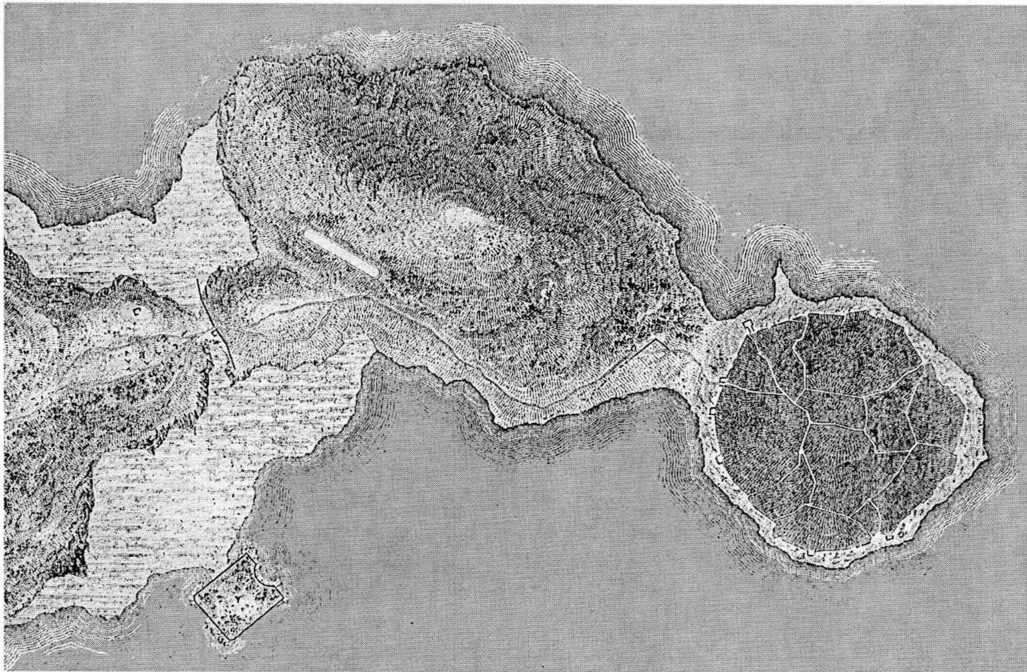


Figure 8



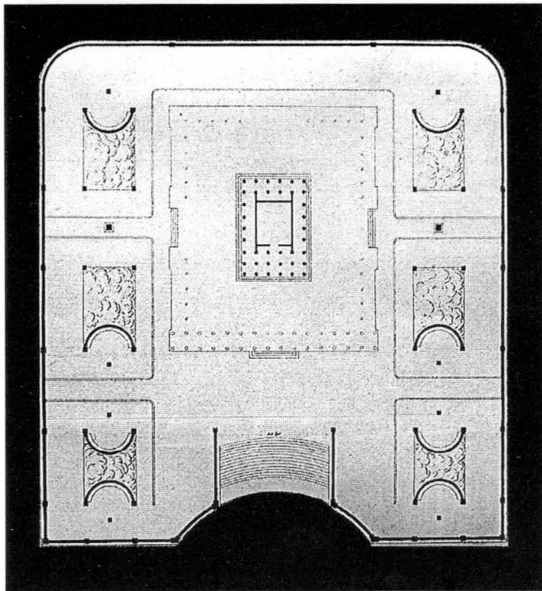


Figure 9

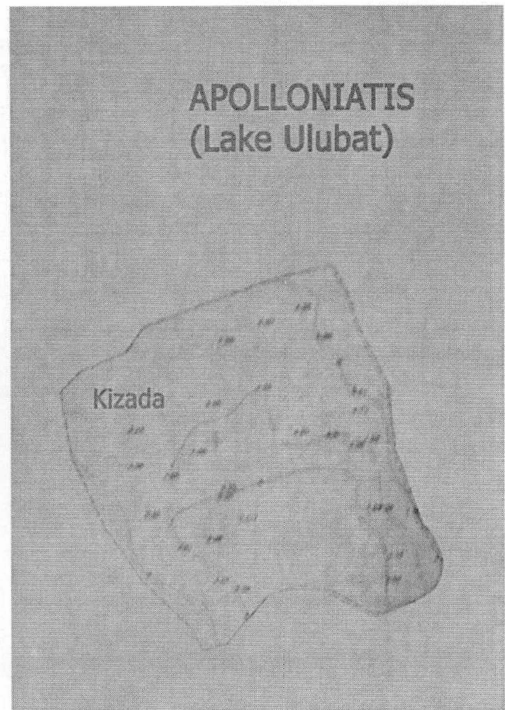


Figure 10

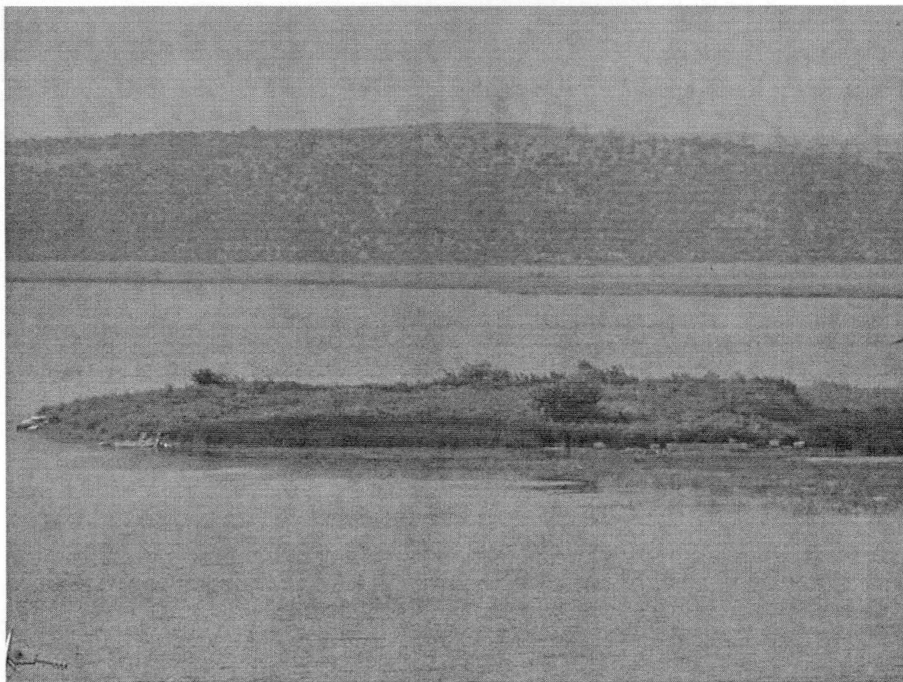


Figure 11

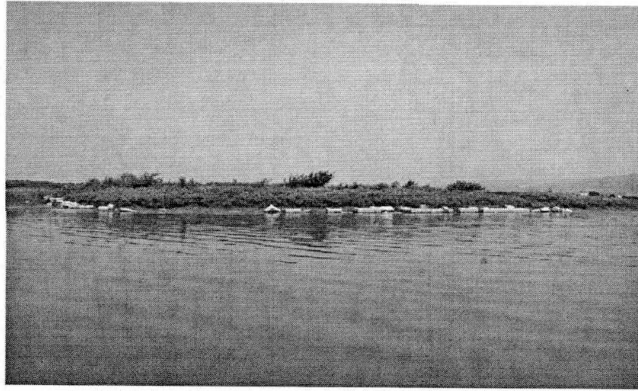


Figure 12



Figure 13

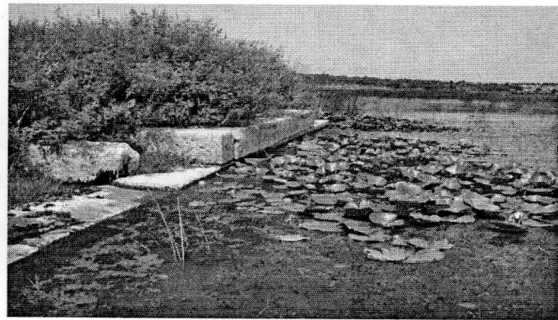


Figure 14

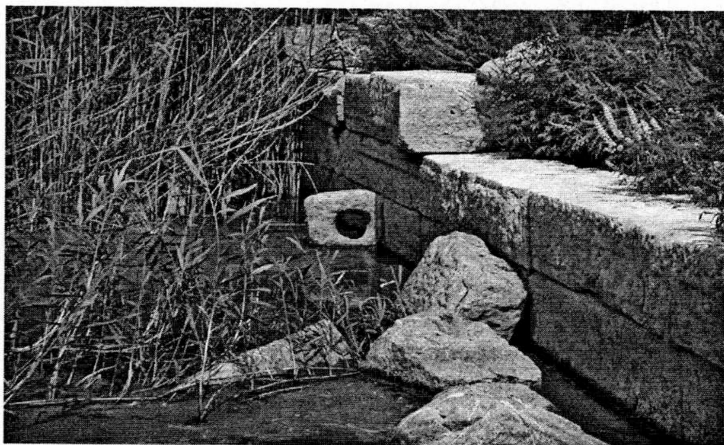


Figure 15





Figure 16

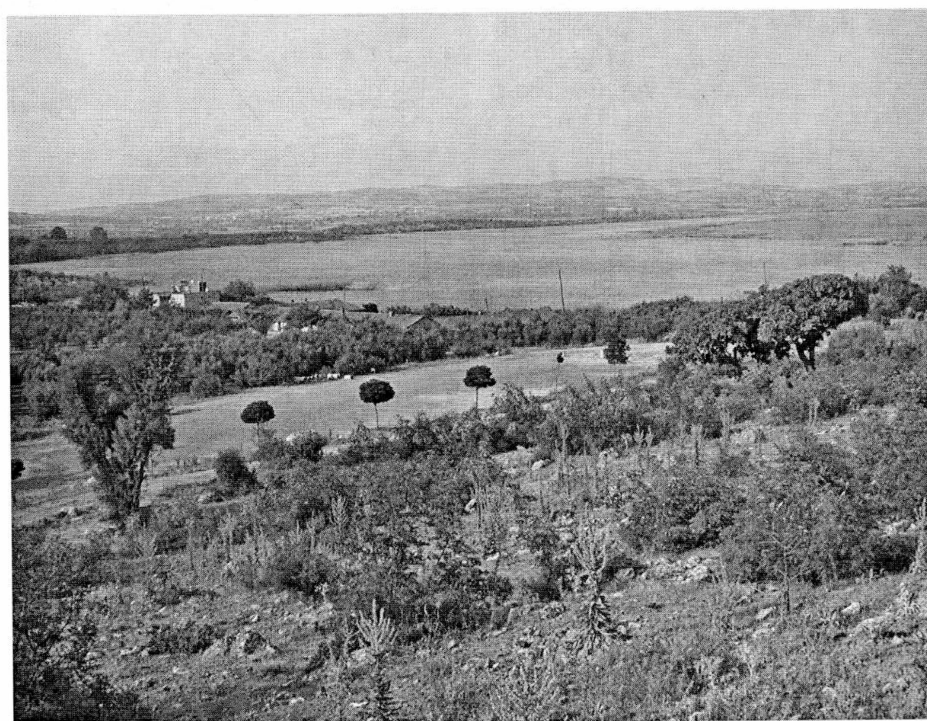


Figure 17

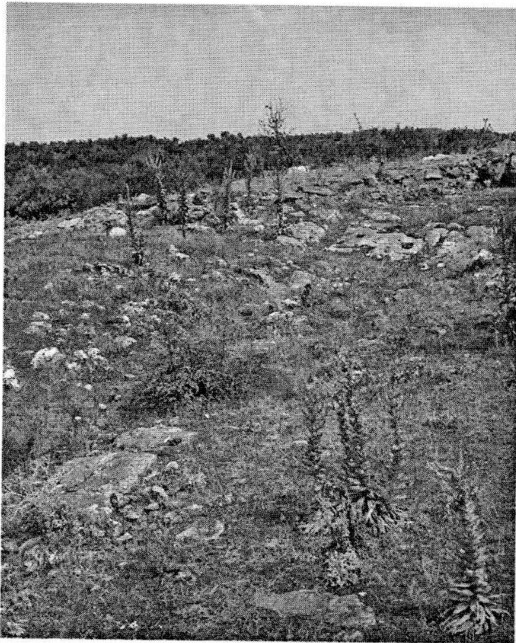


Figure 18

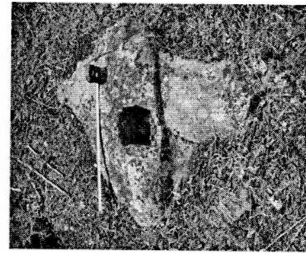


Figure 19

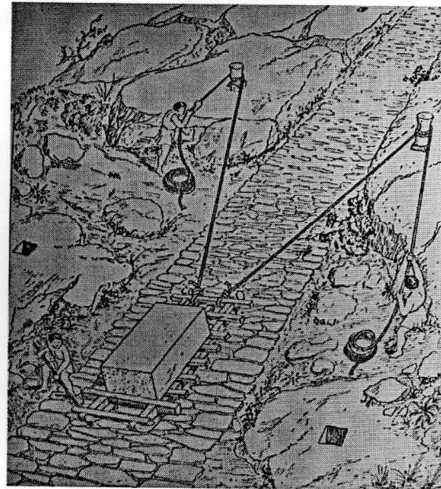


Figure 20

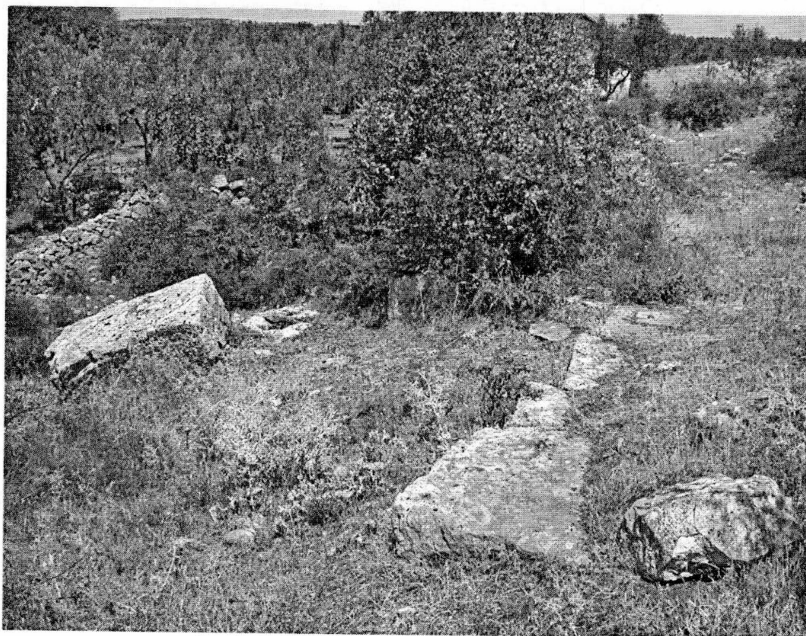


Figure 21



Figure 22

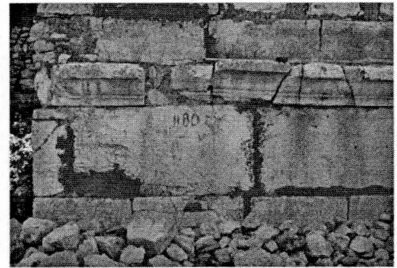


Figure 23

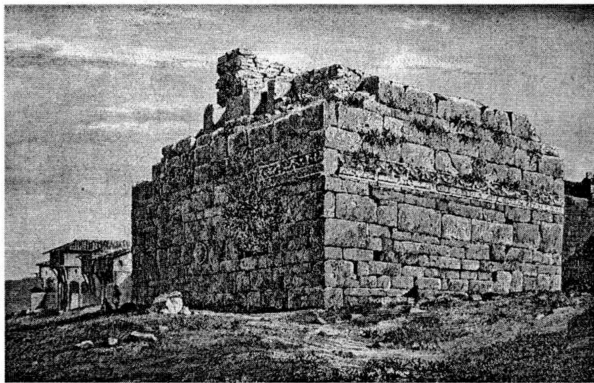


Figure 24

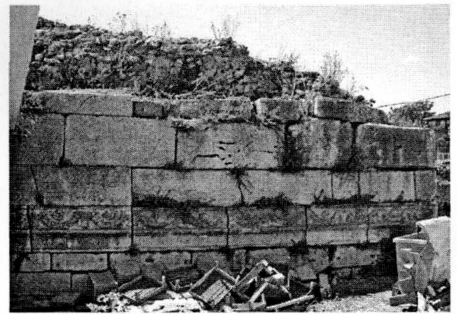


Figure 25

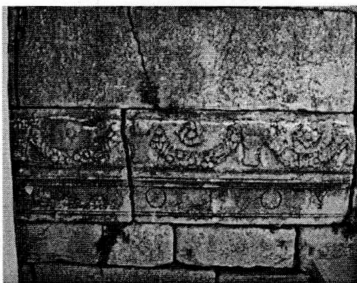


Figure 26

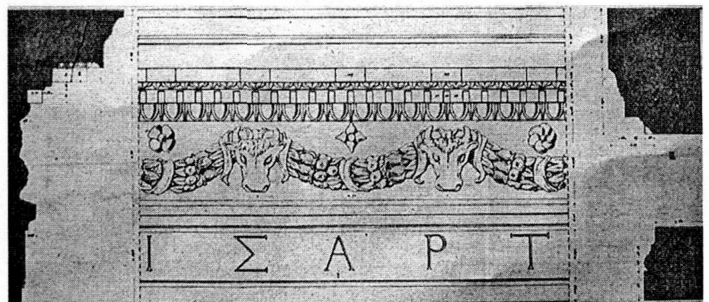


Figure 27





Figure 28

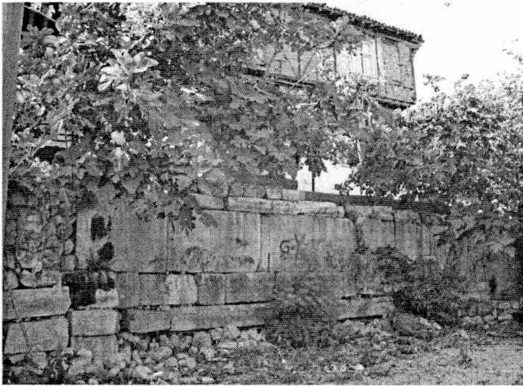


Figure 29

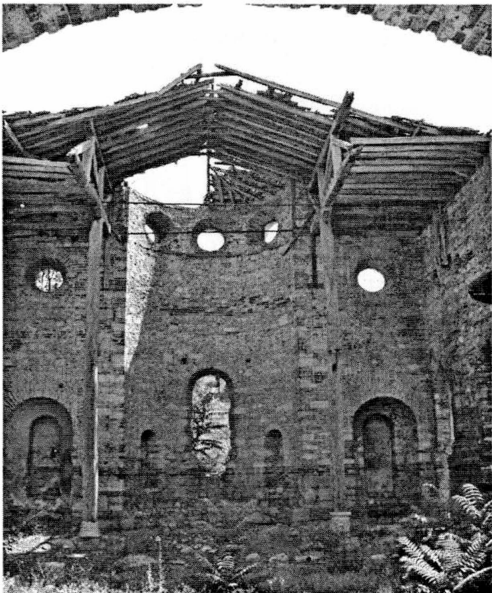


Figure 31



Figure 30



Figure 32



Figure 33



Figure 34



Figure 35

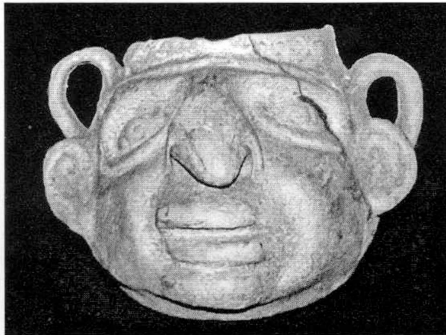


Figure 37

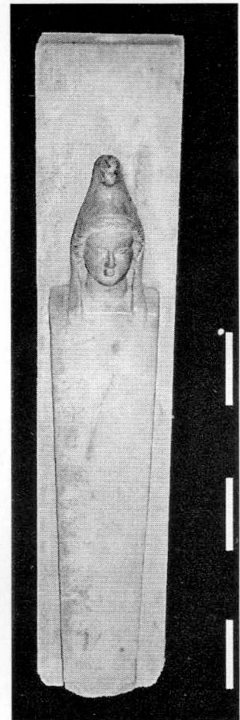


Figure 36



Figure 38

circ. B.C.450 – circ. B.C.330					
Nr.	Metal.	Wt.	Obverse.	Reverse.	Picture
1	AR	57.9	Anchor inverted; to r., cray-fish	Swastika within incuse of the same form	
2	AR	43.5	Anchor inverted; to r. cray-fish; to l. A.	Gorgoneion(grotesque); mouth wide open. Later style; no incuse.	
3	AR	226.4	Head of Apollo l., laur.; hair rolled.	Anchor inverted in incuse circle; to r. cray-fish; to l. A, and ΞΕΙΑΣ	
4	AE	-	Apollo seated l. on omphalos; r. hand rests on bow, l. on omphalos	Anchor inverted; to r., cray-fish; to l., A and [N]ΑΥΚΥΔΗΣ	
2.-1. c. B.C.					
5	AE	-	Head of Apollo r., laur.	Kithara; Απολλωνιατων	
ROMAN EMPIRE PERIOD					
6	AE	-	ΑΥΤΝΕΡΒΑΚΑΙΣΕΑΡ ΣΕΒΑΣΤΟΣ Head of Nerva r., laur.	ΑΠΟΛΛΩΝ ΙΑΤΩΝΡΥΝ Apollo, in citharoedic dress, standing, looking l.; in r., plectrum; in l. lyre, which rests on tripod.	
7	AE	-	ΦΑΥΣΤΕΙ ΣΕΒΑΣΤΗ Bust of Faustina, jun. r.	ΑΠΟΛΛΩΝΙΑΤΩΝ Bearded river-god (Rhyndacus), wearing himation over limbs, reclining l.; in r., reed; l. rests on urn.	
8	AE	-	ΑΥΚΑΙΑΑΥΡΗ ΛΙΟ ΣΟΥΗΡΟΣ Bust of L. Verus r., wear paludamentum and cuirass; head bare.	ΑΠΟΛΛΩΝΙΑΤΩΝ ΠΡΟΣ ΡΥΝΔΑΚΩ Apollo, naked, r., leaning with l. elbow on pillar; both arms extended.	
9	AE	-	ΦΑΥΣΤΕΙΝΑ ΣΕΒΑΣΤΗ Bust of Faustina, jun. r.	ΑΠΟΛΛΩΝΙΑΤΩΝ Apollo naked, l., leaning with r. elbow on pillar; in r. hand, bow; l. hand on hip; to l., tree, round is coiled the Python with an arrow in his head.	
10	AE	-	ΑΥΚΑΙΜΑΥΡΗ ΚΟΜΜΟΔΟΣ Bust of Commodus r., laur., wear paludamentum and cuirass.	ΑΠΟΛΛΩΝΙΑΤΩΝ Apollo naked, standing l.; r. foot rests on altar; in r. hand, branch; l. hand rests on hip, before him, raven looking back.	
11	AE	-	ΠΟΥΑΙΚΓΑΛΛΗΝΟΝ ΣΕΚΟ Bust of Gallienus r.	Cult statue (Apollo Sauroktonos) in tetrastyle temple.	

Figure 39





Figure 40

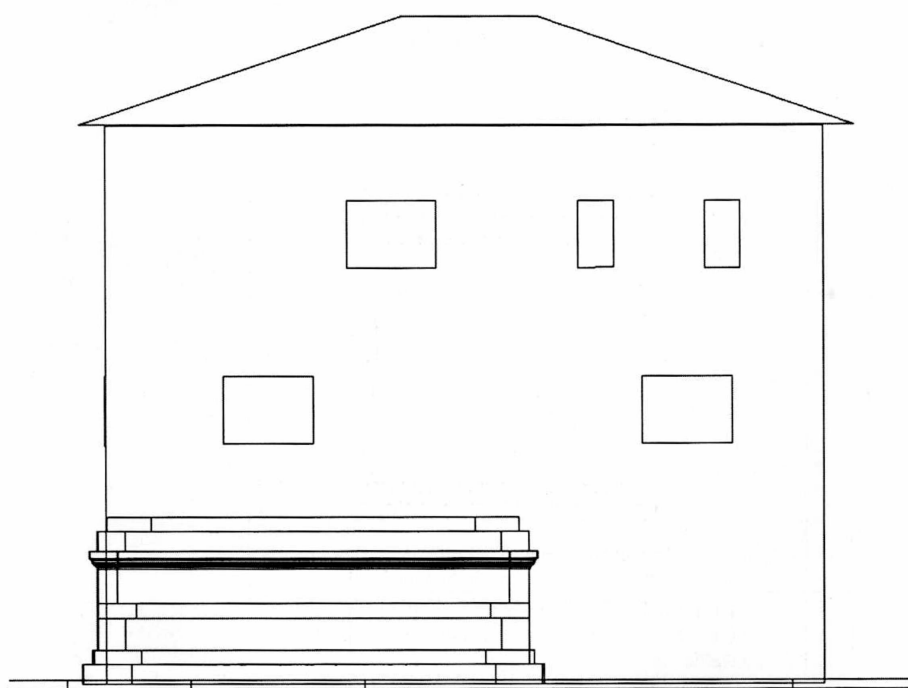


Figure 41

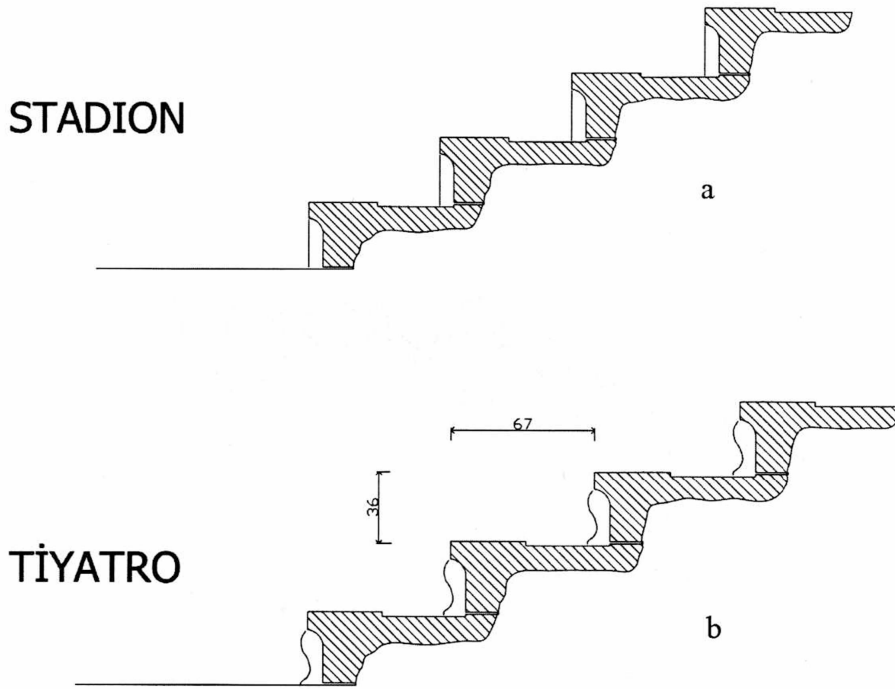


Figure 42

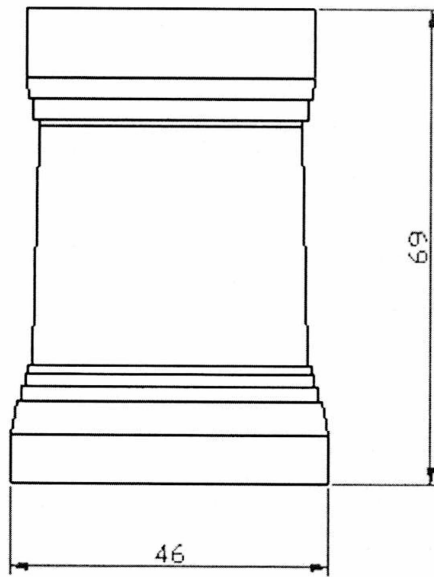


Figure 43

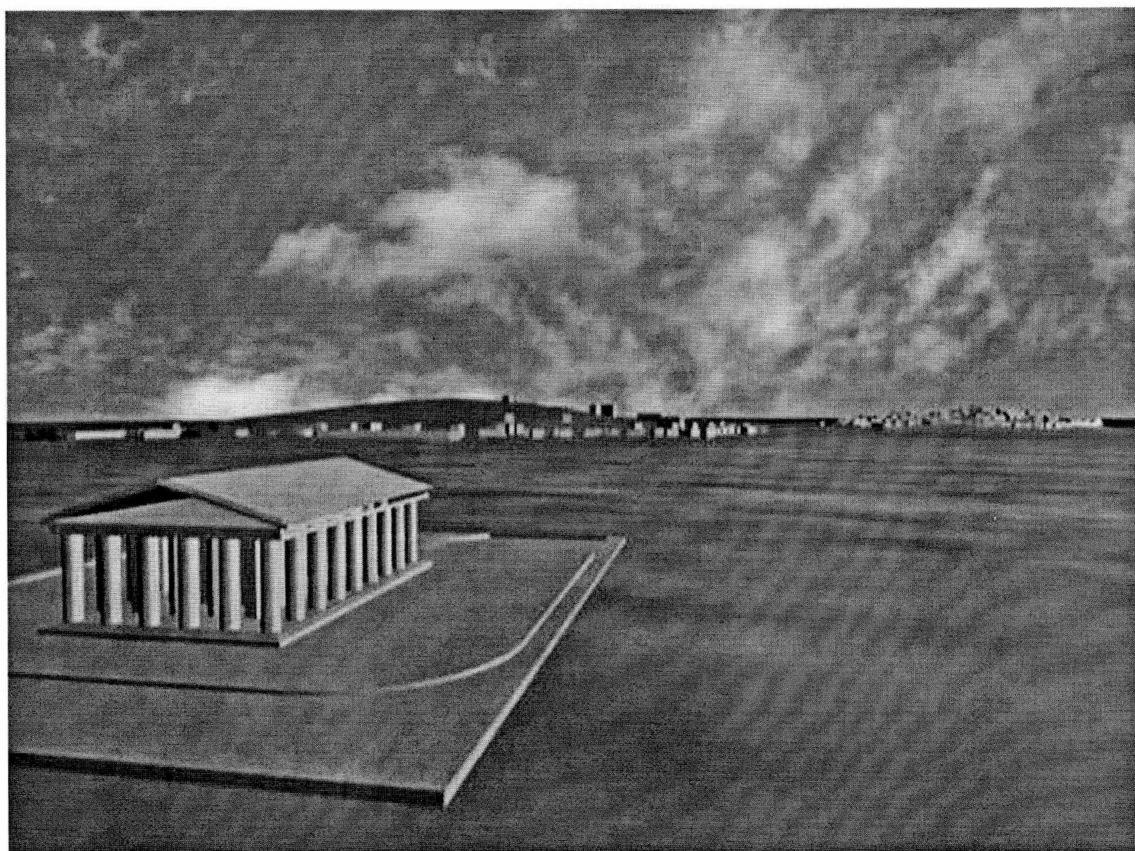


Figure 44



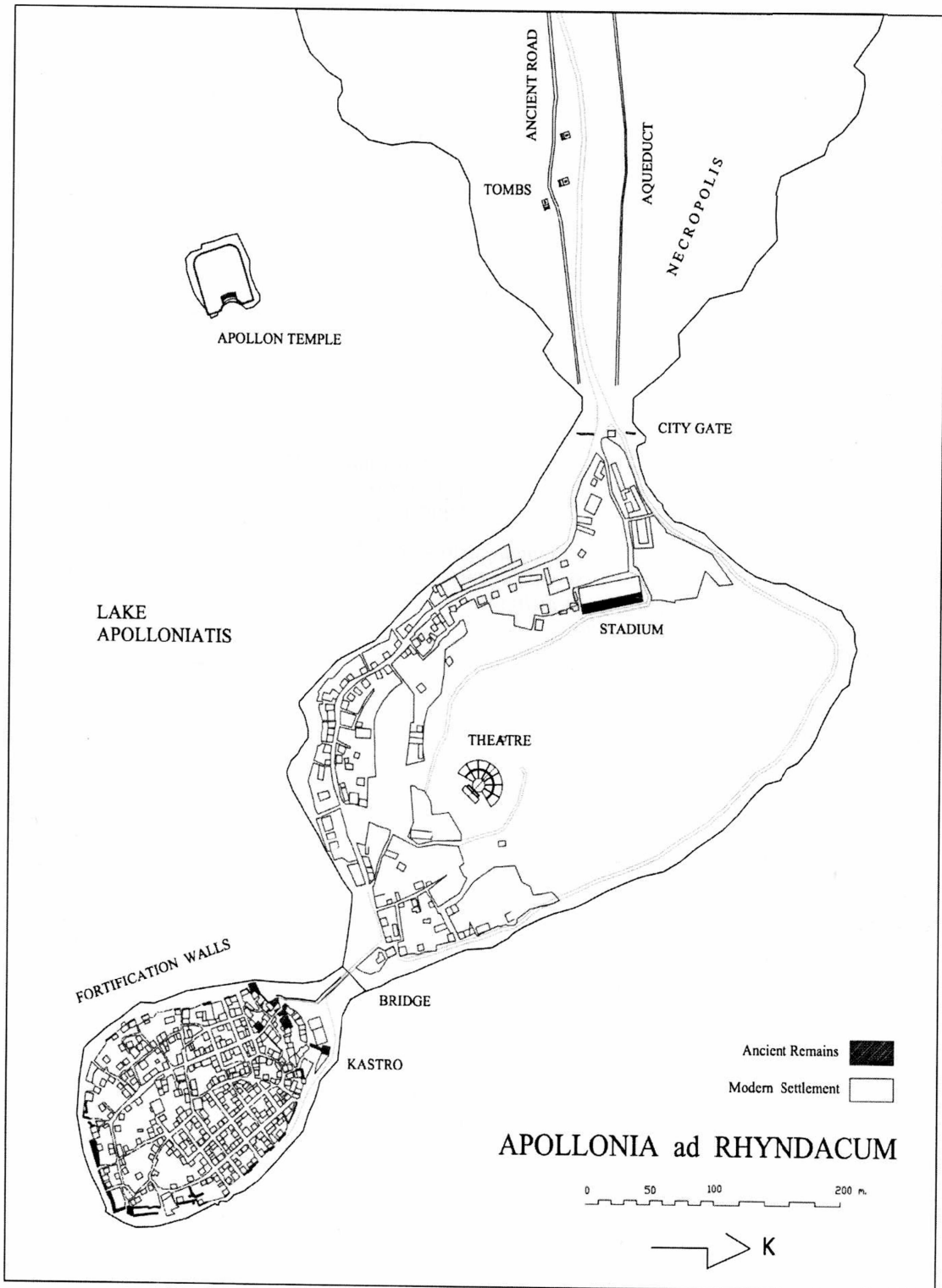


Figure 45