

## HÖYÜCEK EXCAVATIONS, 1990

### (Summary)

The second season of excavations at Höyücek was conducted from July 21 to September 8, 1990<sup>7</sup>. We started the campaign by opening Squares J/5 and J/7-8, which had yielded no architectural features whatsoever in the previous season. Upon recognizing a fair quantity of architectural remains immediately below the surface, we opted to open Squares K/5-6 as well; we thus worked over an area of 400 m<sup>2</sup>, removing an overall average of two meters of deposit (Pl.1/1). This year we were able to distinguish two architectural phases: "The Sanctuaries Phase" and "The Shrine Phase".

### Architecture

The Sanctuaries Phase (KAD)<sup>8</sup>. Walls of the KAD, located in Squares K-J/5, were few in number and poorly preserved. We could ascertain neither the relationship between these four parallel segments of wall, nor the nature of the structures to which they belonged (Pls.2;3/1). An area paved with mudbrick (Pl.3/2), however, did come to light between the two walls in the middle of Square K/5. Here we found a great number of figurines and idols of baked clay, as well as a variety of other finds. Considering this to represent a sacred area with votive offerings, we have designated it as Sanctuary 1. A second sacred area similar in character appeared some five meters east of Sanctuary 1.

The Shrine Phase (TD)<sup>9</sup>. Two structures from the TD were uncovered in Squares J-K/6; one was completely exposed, the second only partially excavated (Pls.2;4/1). The first building, comprised of two rooms, measured 11.5 m. by 8.5 m. The walls, about one meter thick, were of mudbrick construction without any stone foundations. From the lowest course upward, both normal and plano-convex bricks (the latter in the

<sup>7</sup> Thanks are due to my colleague Mrs. Jean D. Carpenter Efe, who kindly translated this summary of the excavation report into English.

<sup>8</sup> KAD is the abbreviation used in the Turkish text for the Sanctuaries Phase (Kutsal Alanlar Dönemi)

<sup>9</sup> TD in the Turkish text stands for the Shrine Phase (Tapınak Dönemi).

shape of tortoise shells) were used (Pls.8/1,2;45/1,2). The floor of the larger room was coated with a hard plaster; in the middle there were flat stones which we interpret as the base for a central pillar. A less substantial wall separated the smaller room from the larger (Pl.4/2). Although there was at first no doorway apparent, we discovered that an original opening at the center of this division wall had at some point been blocked up.

The second, only partially excavated, structure of the TD was at the very western edge of the trench (Pls.2;5/1,2). The exterior walls, 100 cm. in width, were of the same construction technique, which employed both rectangular and plano-convex bricks. Due to certain interior architectural features as well as the small finds, we assume that this buildings served a religious purpose; we named it the Shrine. In the northeast corner of the Shrine there was a cubicle with a small staircase of five shallow steps, each ten centimeters in height, against it (Pls.5/1,2;6/1, 2;7/1;10/1). On the floor of this cubicle we found deer antlers, the lower jaw bones of large ruminants, and eight to ten as tragali. At the foot of the steps was a large marble bowl with a smaller ceramic bowl (Pls.6/2;20/3;21/3) and stone chisel inside it, and a boot-shaped vessel (Pls.16/1;19/1) immediately beside it. In the floor immediately beyond the small staircase was a pit containing thousands of small flint blades (Pl.44/2). Against the eastern wall of the room there were boxes constructed of clay panels, some of these upon platforms and others located at the base of the wall alongside grain storage bins (Pl.5/1). The sides of the boxes consisted of panels of clay built with twigs as internal reinforcement; the clay walls of the bins, however, were formed by massive slabs up to 10 cms. thick (Pls.7/2;10/2). Three more large storage bins stood side-by-side in the middle of the room (Pl.5/1).

The plan of the Shrine remains unclear. The entrance lies most probably in the unexcavated area. A hearth and wall remnants to the north of the stairs and cubicle cannot yet with certainty be assigned to this phase.

### **The Pottery**

As a result of a large conflagration at the site, we were able to recover many complete vessels in the gray and brown poorly burnished wares of the KAD. Although many of these are deformed, the pottery repertory is clear, consisting mainly of bowls, some quite large, with all forms generally simple in profile (Pls.11-14). In addition to plastic articulations at the rims, protruding either toward the interior or the exterior, upon occasion in both directions (Pls.11/1;12/1), there is other relief ornament

(Pls.11/3;14/2). Most striking is the absence of lugs and handles of any kind.

The pottery from the TD is completely different in character. Although the color of the clay is again generally brown or dark gray, the firing and burnishing is better (Pls.15;17;18). Vessels often boast cylindrical lugs with string-holes, or pierced lug handles. Two vessels from this settlement are particularly of note; one is boot-shaped (Pls.16/1;19/1), the second kidney-shaped (Pls.16/2;19/2).

### The Small Finds

From each building level more than fifty tools of stone -chisels and celts- were recovered (Pls.43). The idols and mother-goddesses of baked clay constitute a second large group of small finds. Some of these are quite naturalistic, modelled in the round without being truly steatopygic (Pls.22-24;33;34). On the more stylized figurines and idols as well, there are some indications of breasts, navels, and pubic regions; the bodies of two are adorned with dots (Pls.25;26;35). The idols, those very schematically portrayed, represent the majority (Pls.28; 29; 36/1,2). These have no heads; between the shoulders is a round socket which must have received a rod-like projection on the heads of wood, clay, or stone. We can even cite the existence in Sanctuary 2 of such a head in bone (Pls.30;36/3). Whereas a few of the figurines are modelled as if seated on chairs, the great majority are depicted with upright torsos and folded knees, as if seated on the ground. Two of these figurines from Sanctuary 1 stand in an upright position (Pls.31/1;32;36/4,5).

Among the other finds of baked clay from the KAD are small rectangular prisms with dots on the surface (Pls.31/3,4;42/5) and flat round discs (Pl.31/5). An unusual find from the TD is a small clay table (Pls.37;39). The legs boast plastic applications in the form of animal heads, and there are traces of red painted designs over the cream-colored slip. Also recovered from the same settlement were several clay trays (Pls.38;40).

Stone objects from the KAD include the conical head of an idol (Pls.41/4;42/4) and a boot-shaped pendant (Pls.31/8;42/6). Of note among the bone artifacts are again heads of idols (Pls.41/1-3; 42/1-3). Objects of stone from the TD include three complete marble bowls (Pls.20-21) as well as flint cores and the thousands of small flint blades recovered from the pit (Pl.44/1-3).

### Conclusions

In respect to both architecture and finds, the two settlement phases excavated in our second campaign present a striking contrast. The toroise-shaped bricks used in the earlier architectural phase, for example, have not been found employed in the later settlement. The ceramic traditions of the two settlements would appear totally unrelated in technique as well as in form repertory. Whereas nearly forty figurines and idols appeared in the KAD, not a single example was recovered from the lower. The only parallels to be cited between the two phases are in the types of stone chisels and celts found in number in both settlements, and in the similarity between a boot-shaped vessel of the TD and a marble counterpart in the Sanctuary Phase. From this we could conclude that the inhabitants of the two phases of settlement at the site were unacquainted with one another; there was most likely a hiatus between the two phases. To judge from the finds, relationships between the population of Höyücek and that of the two significant Neolithic and Early Chalcolithic sites Hacilar and Kuruçay Höyük only thirty kilometers to the north must also have been tenuous. Contact, if limited, is shown by a few examples of the KAD Höyücek pottery in the Neolithic and Early Chalcolithic strata of Kuruçay. The painted pottery of Höyücek would also suggest a relationship with the tradition of painted ornament common to the pottery of Hacilar and Kuruçay. We would assume that the population of the latest phase of Höyücek inhabited the site during a period at least partially contemporary with the settlements at Hacilar and Kuruçay, most probably for a relatively short span towards the end of the Neolithic and at the beginning of the Early Chalcolithic Period. Although the analyses of C 14 samples from Höyücek have not yet been completed, it cannot be far wrong to assign the earlier architectural phase to the end of the seventh millenium B.C. and the later settlement to the middle of the sixth millenium B.C.<sup>10</sup>.

<sup>10</sup> Carbon samples from two posts found employed in the TD and one from a post in Square J/5 were sent to the Heidelberg University Laboratories. The laboratory report, which has arrived subsequent to the writing of this article, provides the following analyses:

Radyoactive age	Calibrated date
7350±70 B.P.	6100 B.C.
7350±50 B.P.	6110-6190 B.C.
7540±45 B.P.	6350-6440 B.C.

Sincere thanks are due to our friend and colleague Prof.Dr. Manfred Korfmann, who kindly arranged to have the analyses carried out.

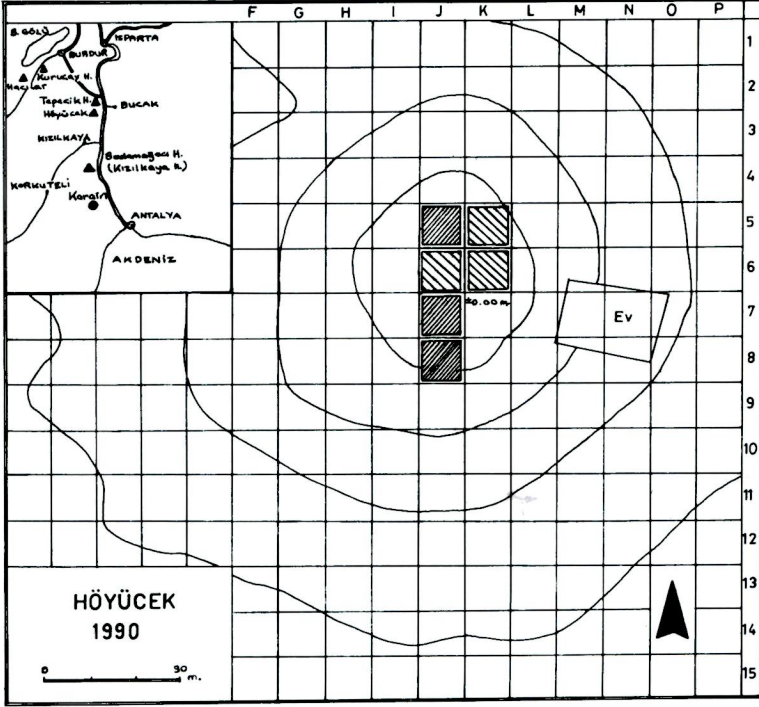
## BİBLİYOGRAFYA

- BİLGİ, Ö.; "Yeni Bulunmuş Eserlerin Işığı Altında Anadolu'da Bronz Çağı  
1980 Öncesi İnsan Figürleri Hakkında Yeni Gözlemler", *Bellekten*,  
XLIV, s.1-24.
- BITTEL, K.; "Bemerkungen über die Præhistorische Ansiedlung auf dem  
1971 Fikirtepe bei Kadıköy (İstanbul)", *Istanbulur Mitteilungen*,  
19/20 (1969-70), 1-9.
- COMMENGE-PELLERIN, C.; *La Poterie d'Abou Matar et de L'ouadi Zou-*  
1987 *meili (Beersheva) au IV e millenaire Avant l ere Chretienne*,  
Paris.
- ÇAMBEL, H. ve bşk. ; "1988 Yılı Çayönü Kazıları", *XI. Kazı Sonuçları*  
1990 *Toplantısı I*, Ankara.
- DURU, R.; "Kuruçay Höyüğü Kazıları. 1986-1987 Çalışmaları Raporu",  
1988 *Bellekten*, LII, s.653-666.
- \_\_\_\_\_ ; "Höyücek Kazıları-1989", *Bellekten*, LVI,s.551-563 (Summary, 1992  
p.564-566).
- \_\_\_\_\_ ; "Höyücek Kazıları-1990",  
1992 *Kazı Sonuçları Toplantısı*, Ankara, s. 155-161.
- \_\_\_\_\_ ; "Höyücek Kazıları-1991",  
1993 *Kazı Sonuçları Toplantısı*, Ankara, s. 147-153.
- MELLAART, J.; "Preliminary Report on a Survey of Preclassical Remainsin  
1954 Southern Turkey", *An.St.*, IV s.175-240.
- MELLAART, J.; "Excavations at Çatal Höyük. First Preliminary Report,  
1962 1961", *An.St.*, XII, s. 41-65.
- \_\_\_\_\_ ; *Excavations at Hacılar. I - II*, Edinburgh.
- ROODENBERG, J.J.,L.THISSEN VE H.BUITENHUIS; "Preliminary Report on  
1990 the Archaeological Investigations at Ilıpınar in Anatolia",  
*Anatolica*, XVI, 61-144

SEEHER, J.; *Demircihüyük. Die Ergebnisse der Ausgrabungen 1975 1978,*  
1987 *III,1, Die Keramik 1, Mainz.*

SİLİSTİRELİ, U.; "Köşk Höyük Figürin ve Heykelcikleri", *Bellekten*, LIII,  
1990 s.497-504.

WACE, A.J.B. VE M.S. THOMPSON; *Prehistoric Thessaly*, Cambridge.  
1912

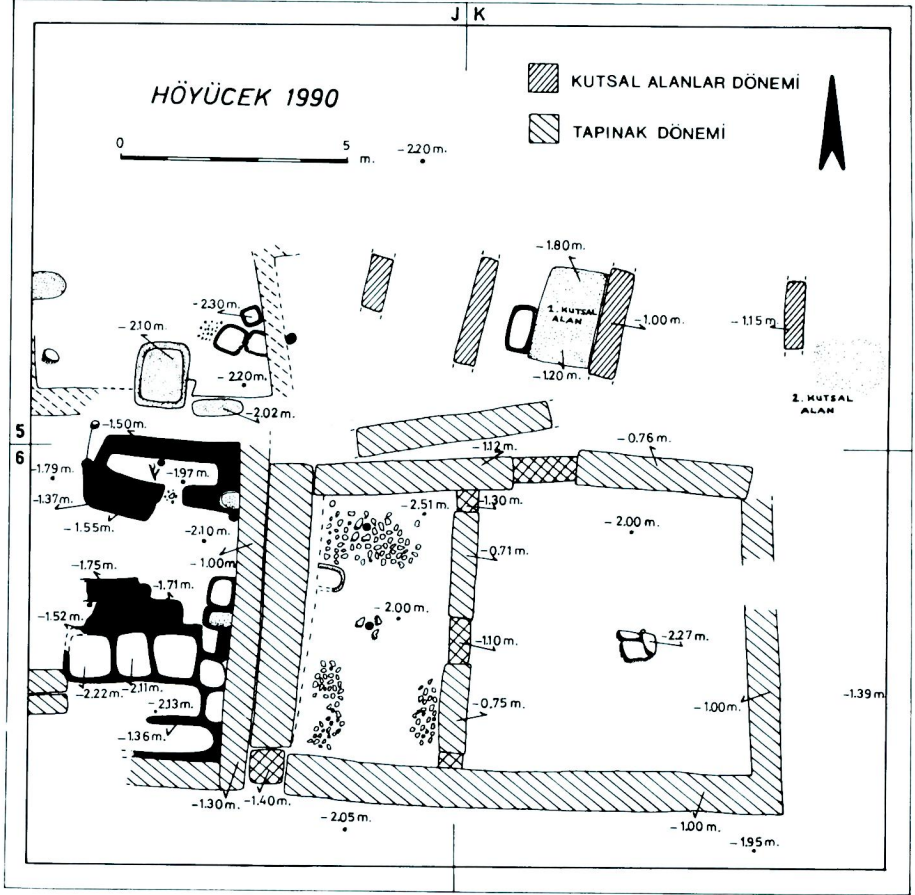


Levha 1/1 - Höyücek ve kazı alanlarının topografik planı.



Levha 1/2 - Höyücek (Batdan).

Refik Duru

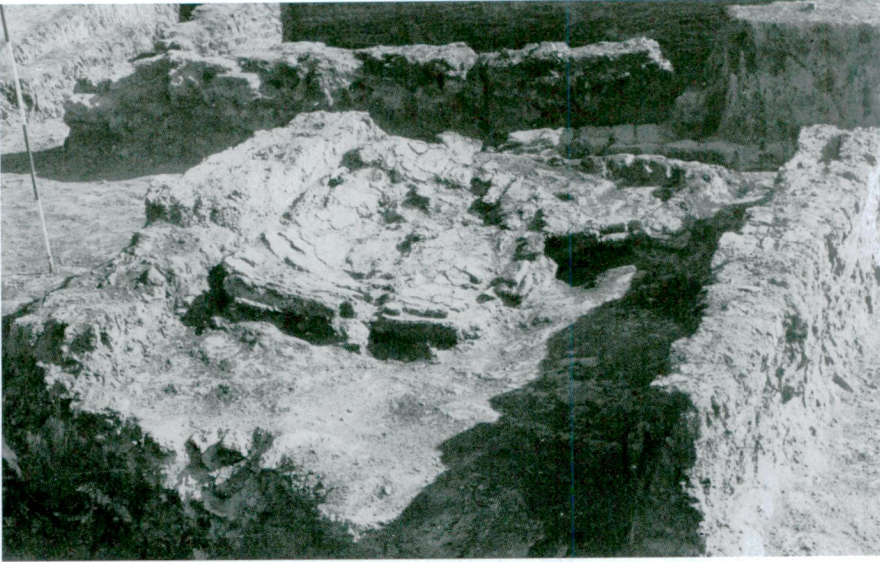


Levha 2 - Kazı alanı ve yapı kalıntıları (Çizim Dr.Gülsün Umurtak).



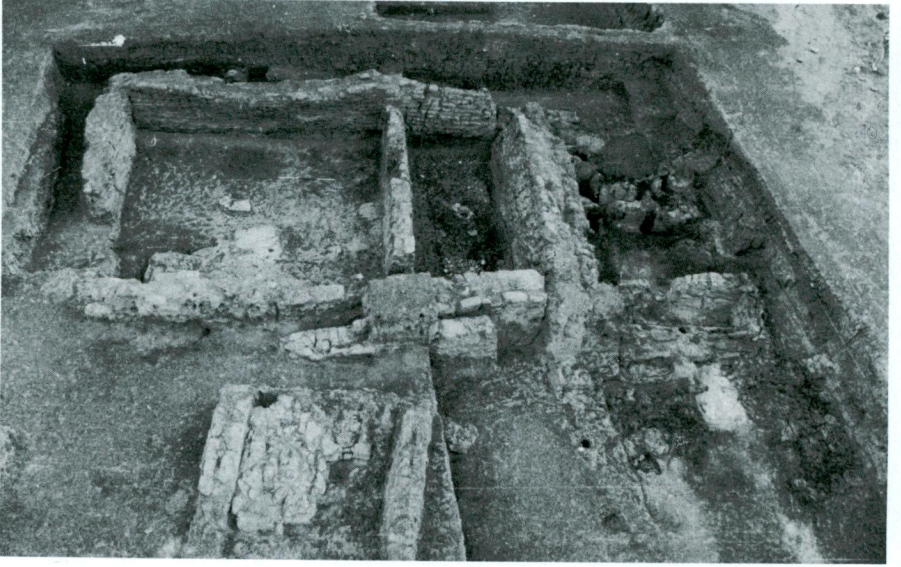


Levha 3/1 - Kutsal Alanlar Dönemi (KAD) duvarları.



Levha 3/2 - KAD duvarları ve ortada 1. Kutsal Alan'ın kerpiç dolgusu.

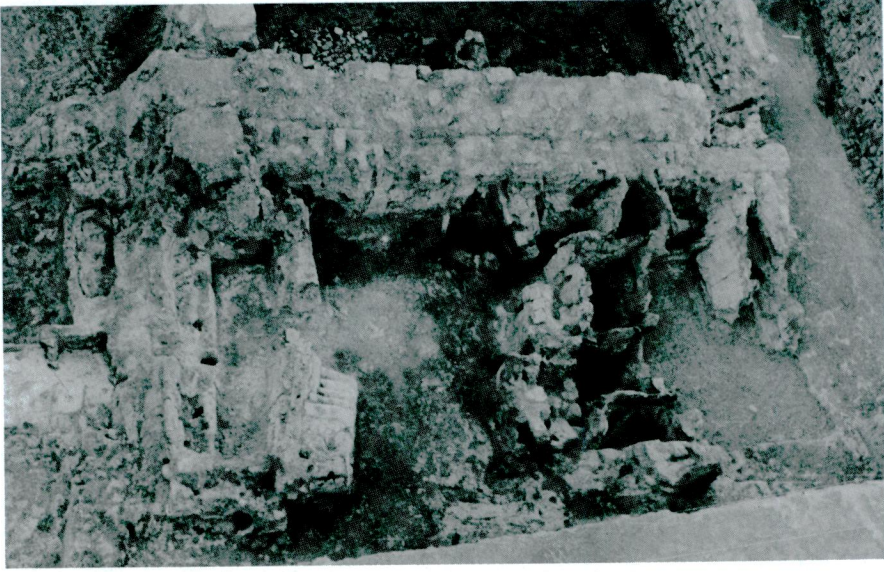
*Refik Duru*



Levha 4/1 - Tapınak Dönemi (TD) genel görünümü.



Levha 4/2 - Aynı dönemin büyük evinin batı odası.

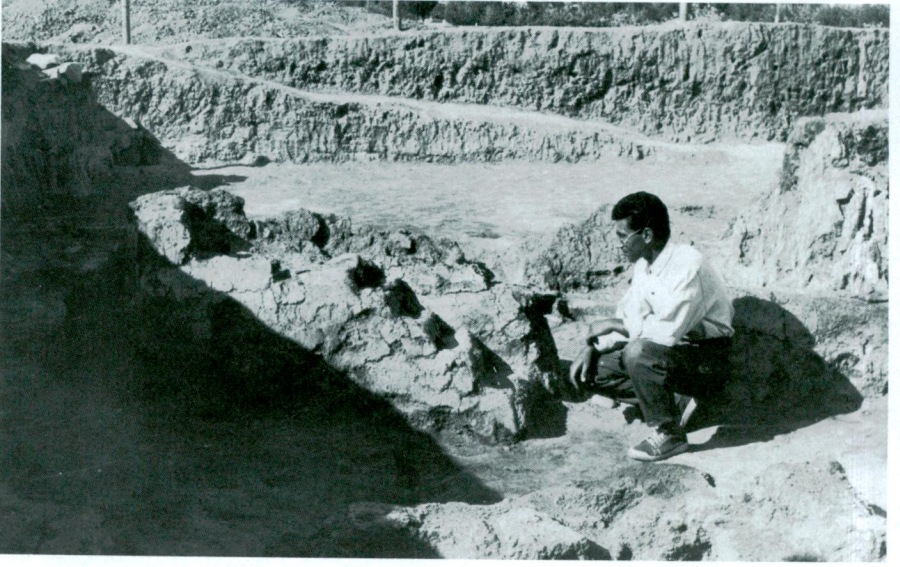


Levha 5/1 - Tapınak (Kuzeyden).

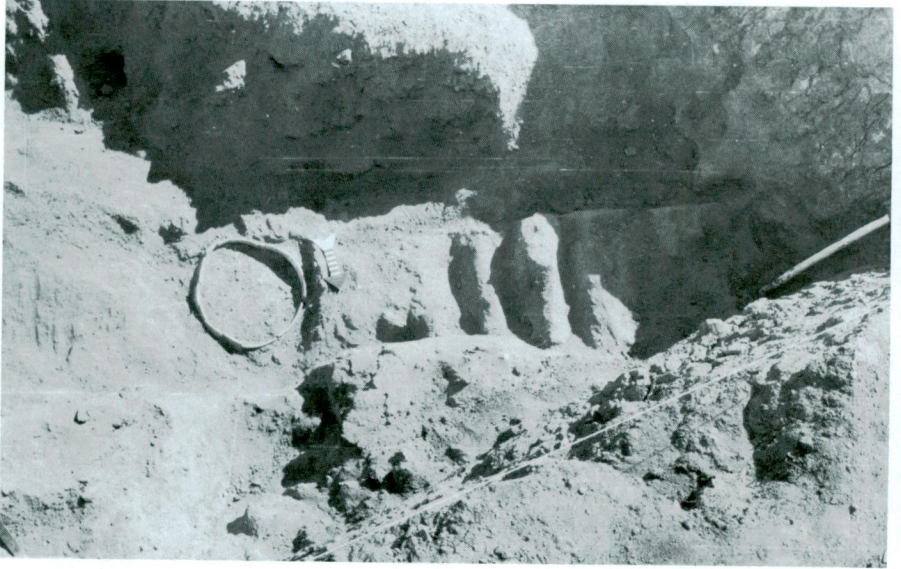


Levha 5/2 - Tapınağın orta kesimi.

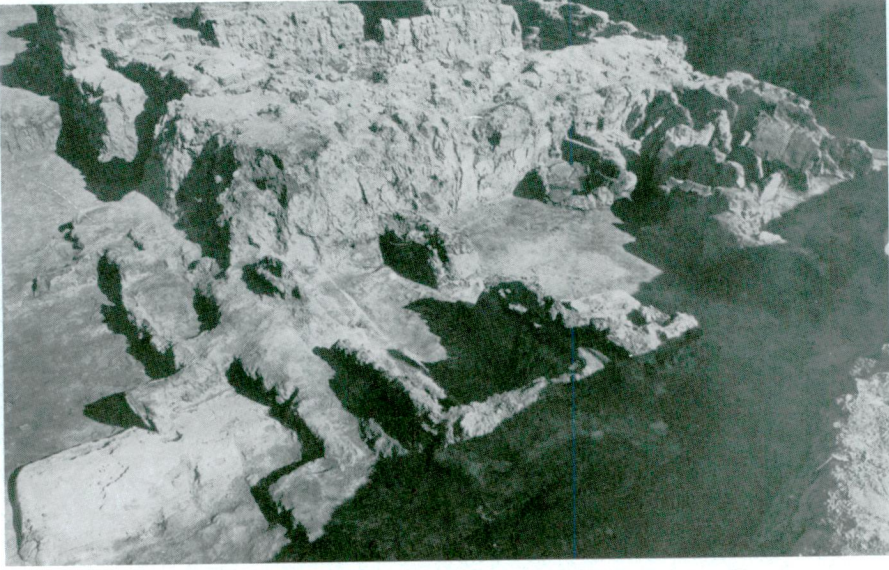
*Refik Duru*



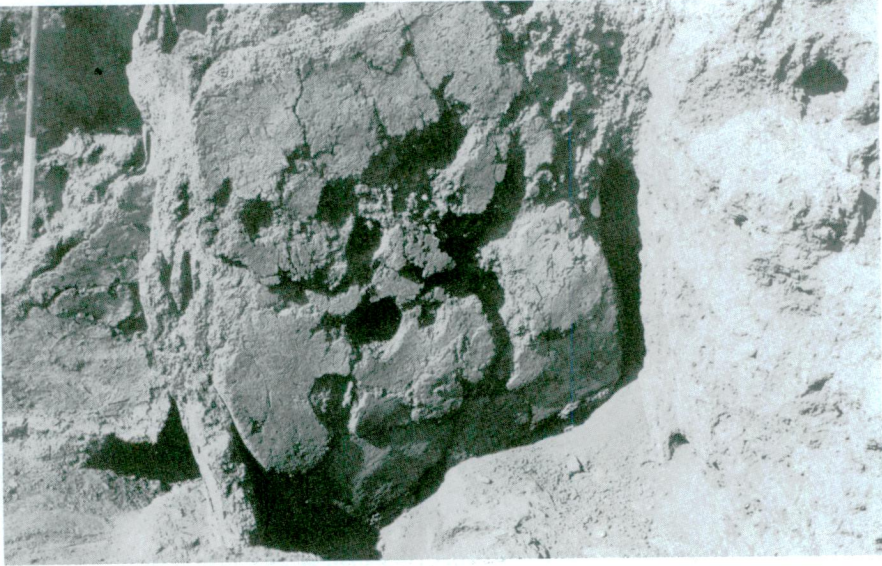
Levha 6/1 - Tapınak içindeki minyatür merdiven.



Levha 6/2 - Kazı sırasında merdiven ve basamak önünde mermer çanak (Çizim Dr.Gülsün Umurtak).



Levha 7/1 - Merdiven yanındaki küçük hücre ve J/5 karesindeki ocak yeri.

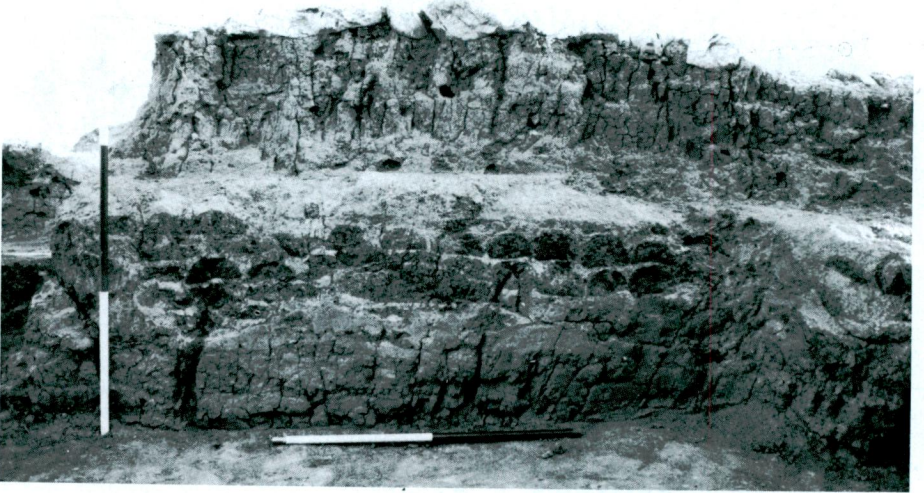


Levha 7/2 - Silolardan birinin kenar levhası.

*Refik Duru*



Levha 8/1 - Kaplumbağa sırtlı (plano-konvex) kerpiçler.



Levha 8/2 - Kaplumbağa sırtlı kerpiçlerden örülmüş bir duvarın kesiti.

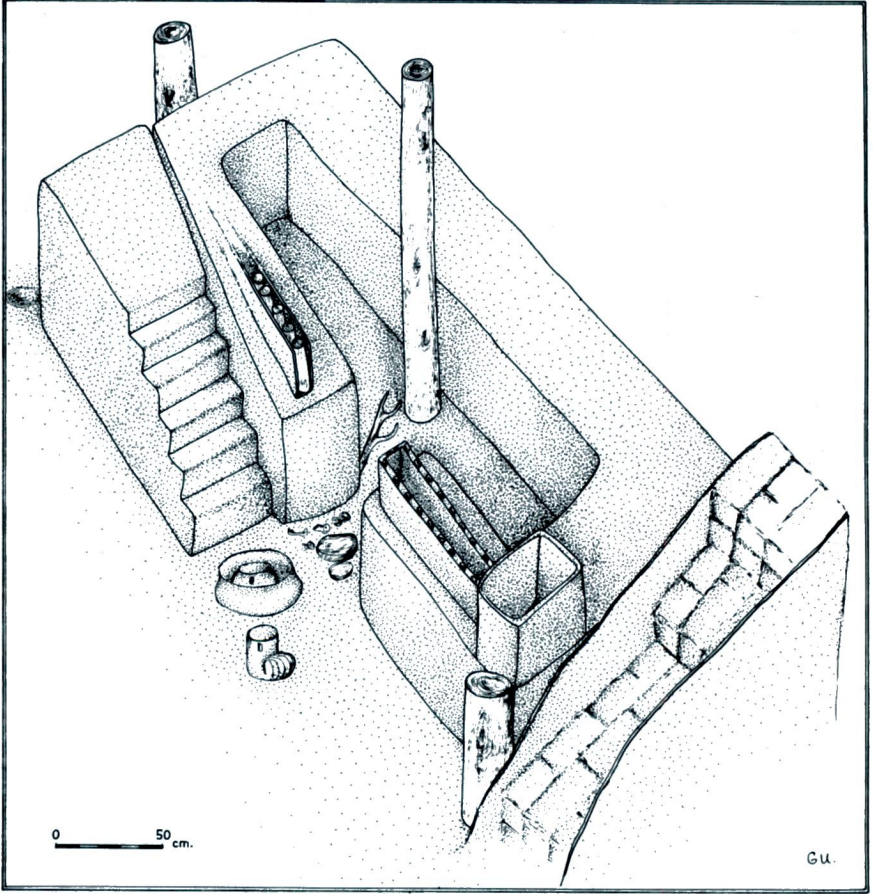


Levha 9/1 - İçi kamış perdeli, kil paravana.



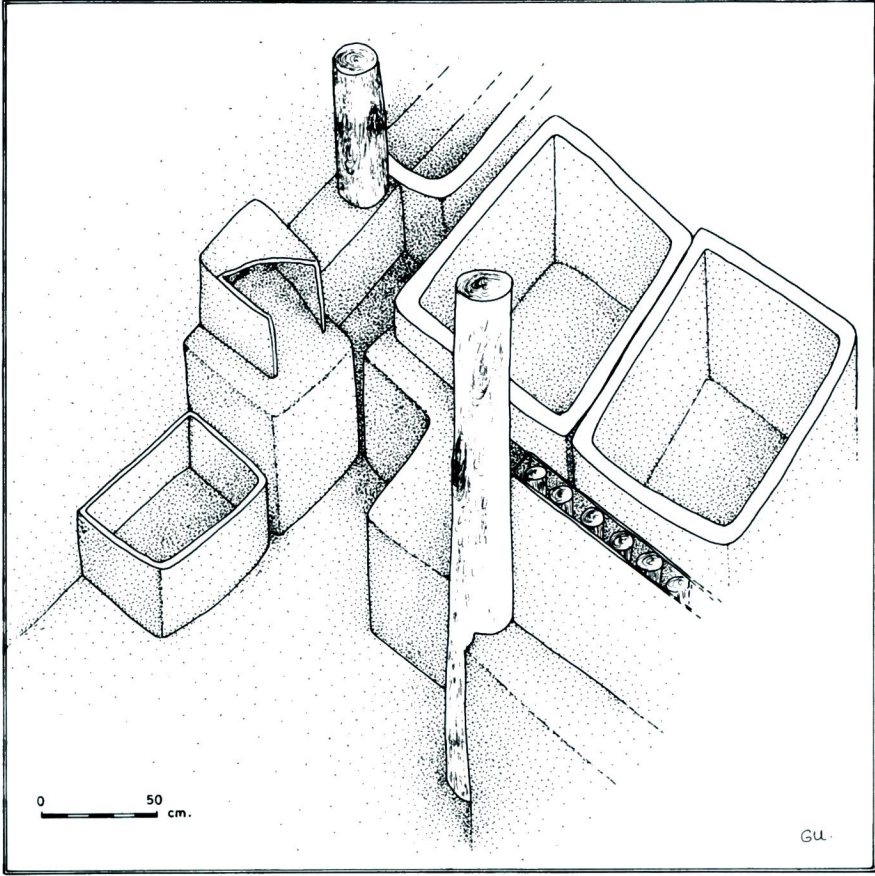
Levha 9/2 - Bazı duvarlarda kullanılan dal perde-kil tekniđi.

**Refik Duru**

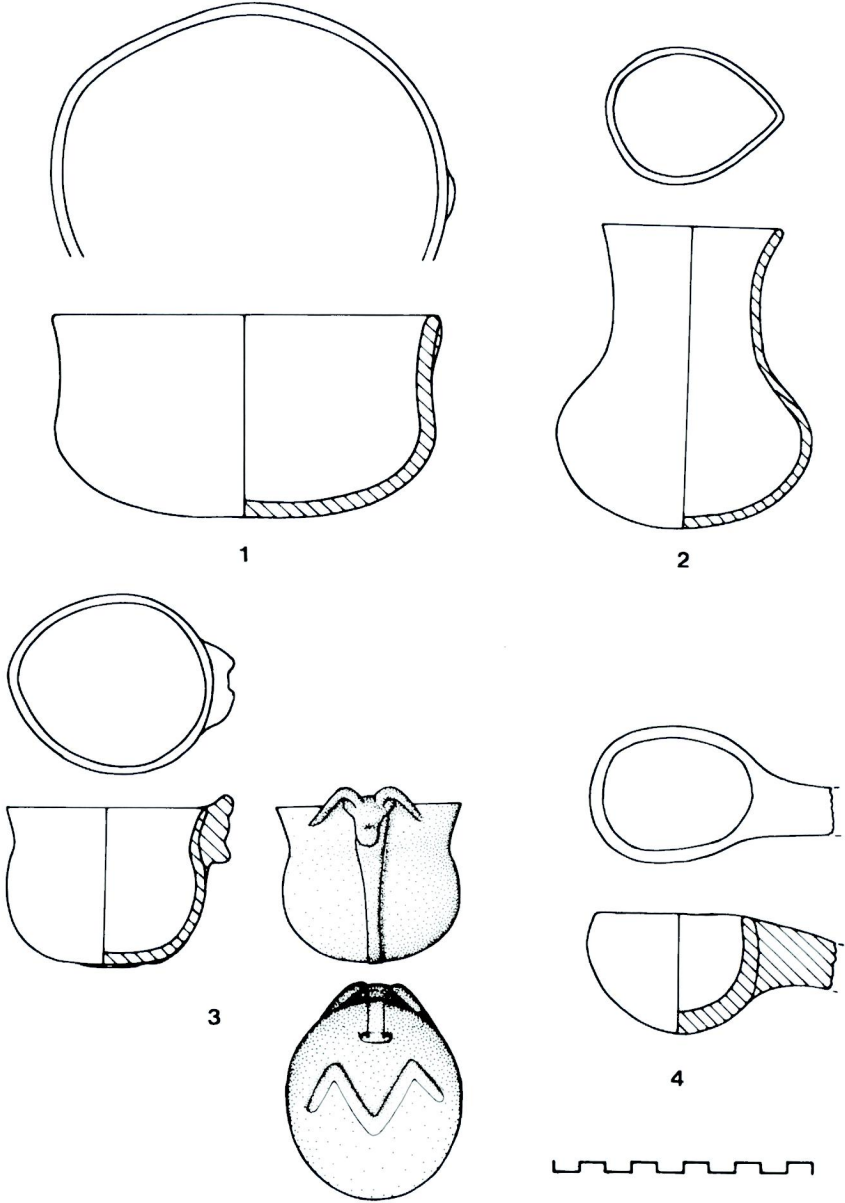


**Levha 10/1 - Tapınağın kuzey kesiminin isometrik planı.**

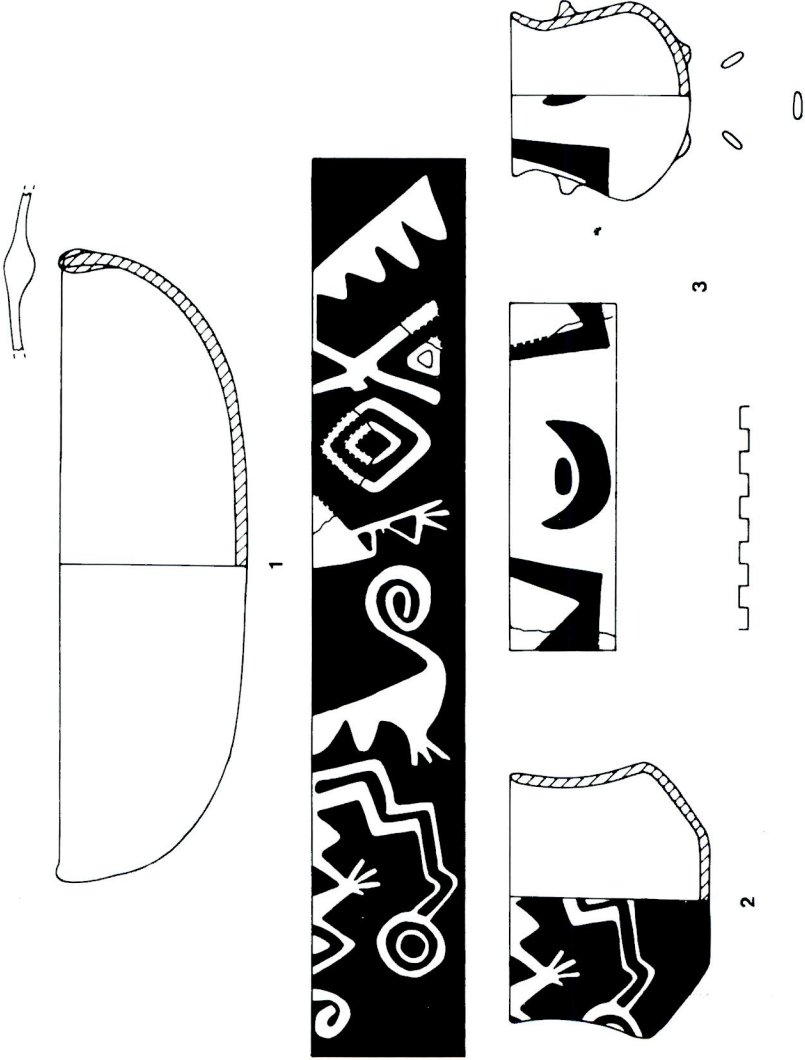




Levha 10/2 - Tapınağın doğu ve orta kesiminin isometrik planı.



Levha 11 - KAD çanak-çömleği.



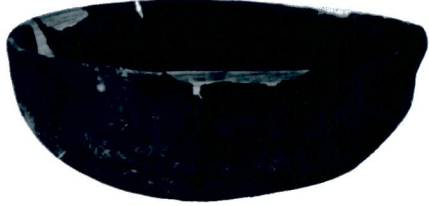
Levha 12 - KAD'tan dudağı kabartmalı ve boya bezekli kaplar.



1



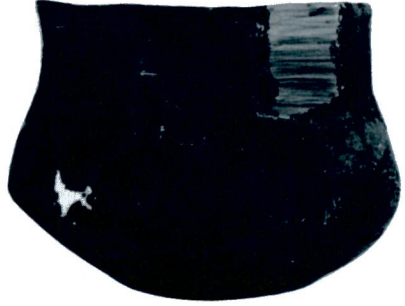
2



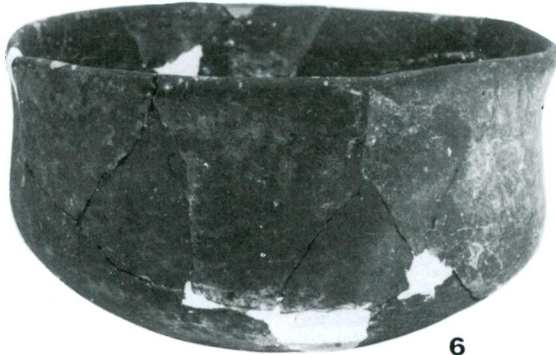
3



4



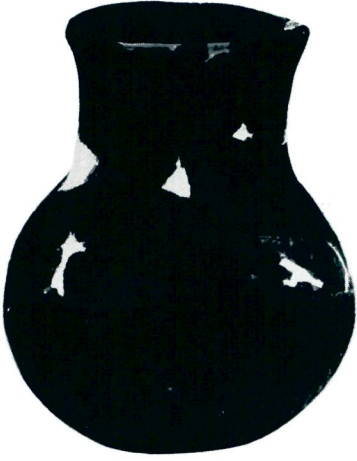
5



6



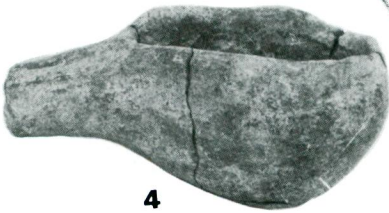
Levha 13 - KAD çanak-çömleği.



2



3

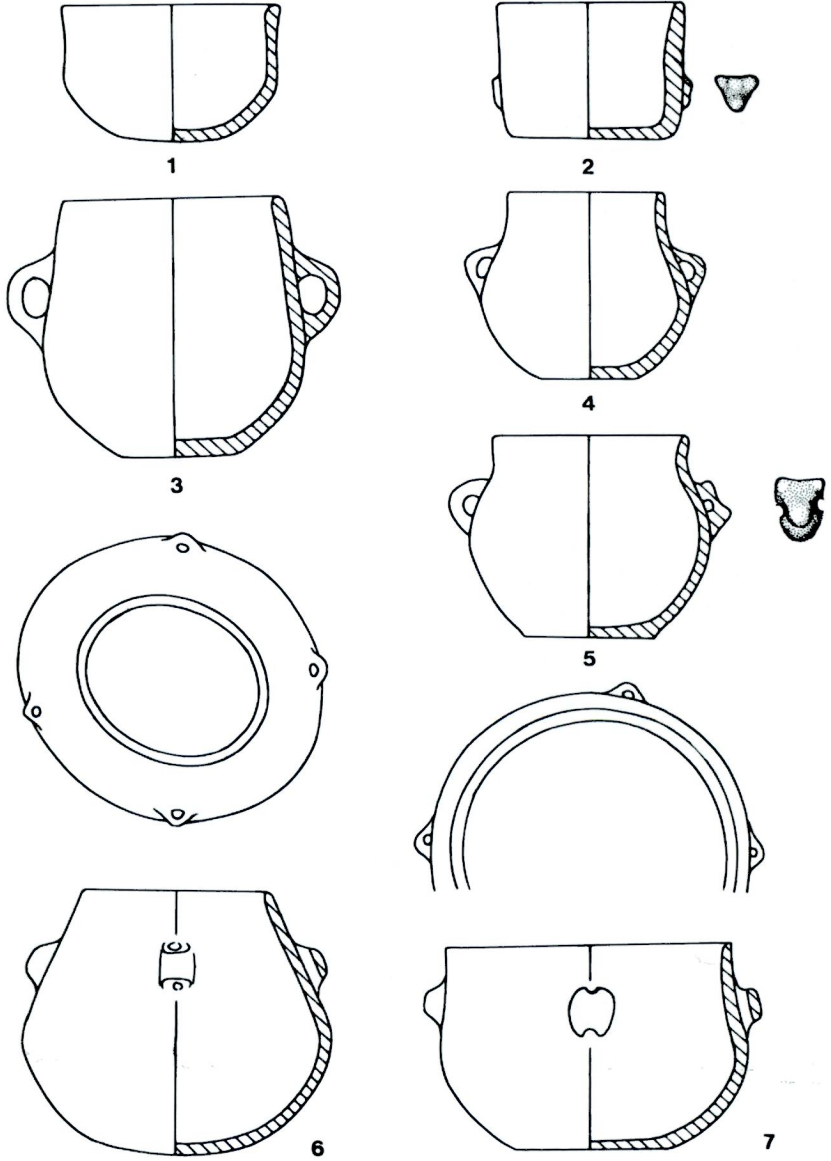


4

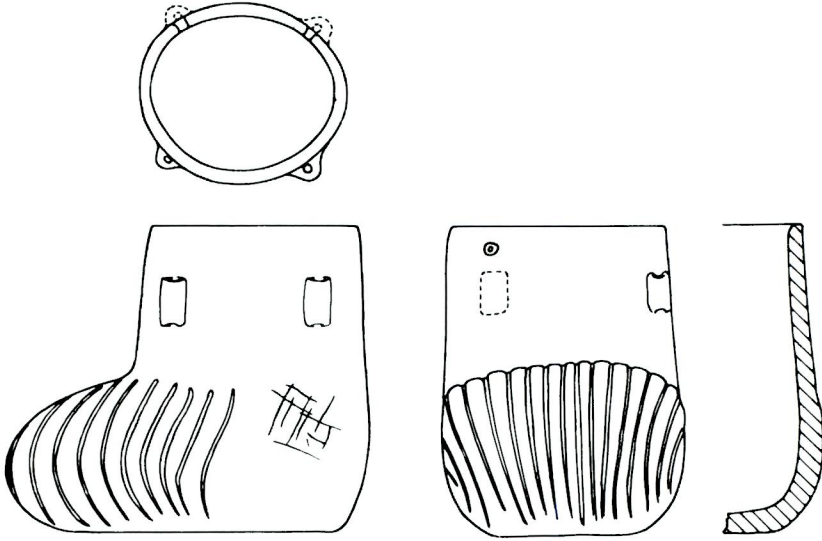


Levha 14 - KAD çanak-çömleği.

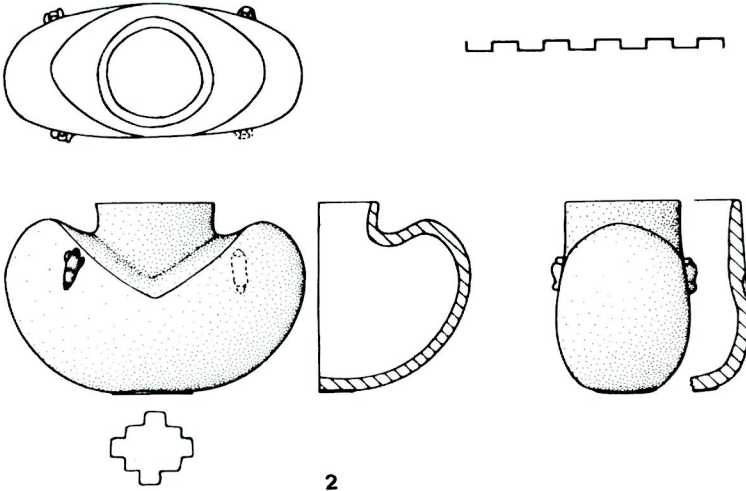
Refik Duru



Levha 15 - TD çanak-çömleği.



1



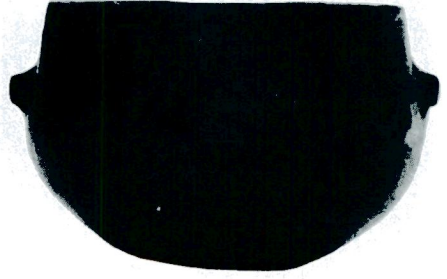
2

Levha 16 - TD'nin fantastik biçimli kapları.

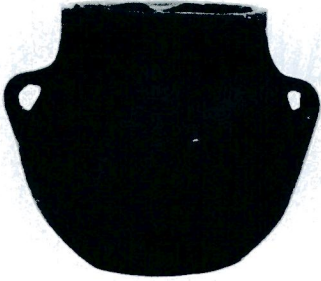
*Refik Duru*



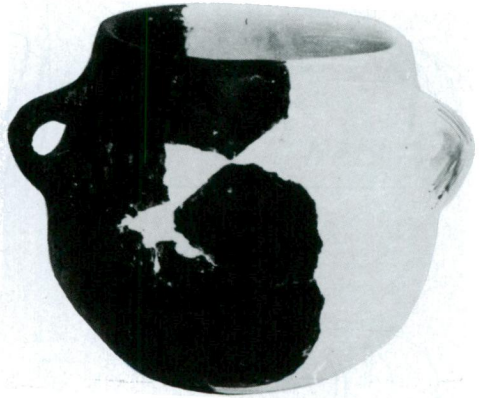
1



2



3



4



5

Levha 17 - TD çanak-çömleği.





1

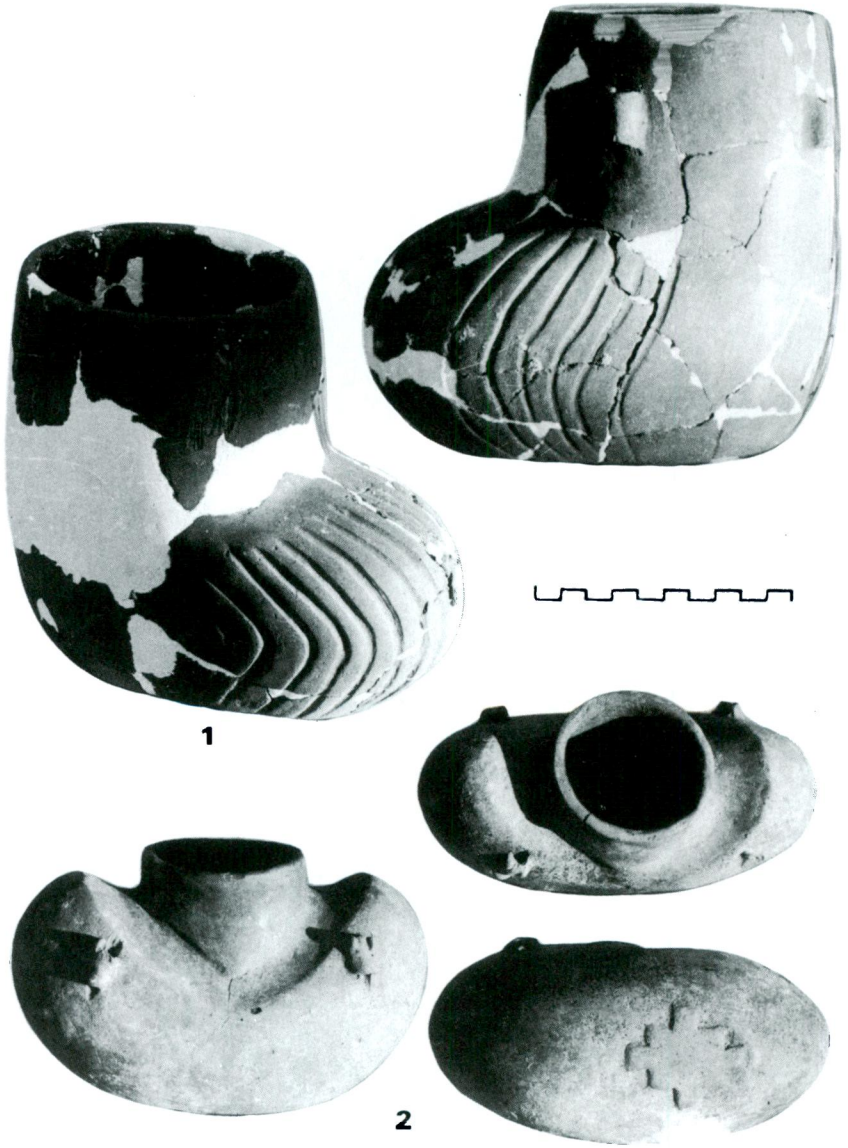


2

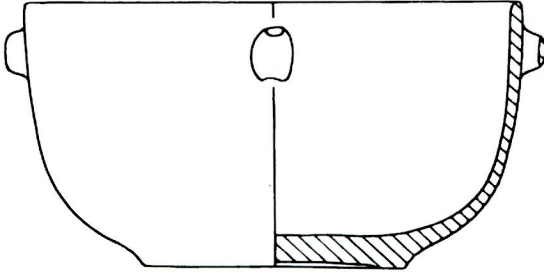
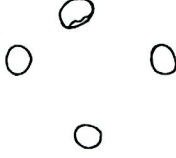
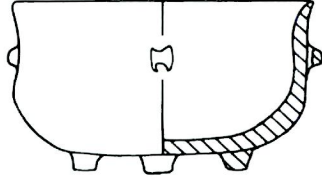


Levha 18 - TD çanak-çömleđi.

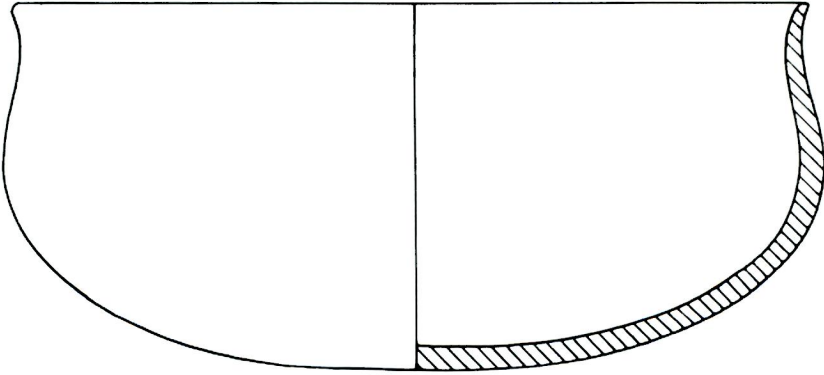
*Refik Duru*



Levha 19 - TD'den fantastik kaplar.



2

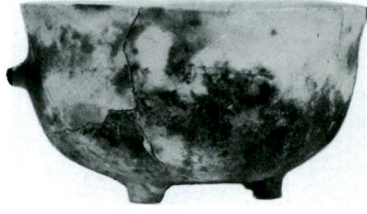


3



Levha 20 - TD'den mermer çanaklar.

*Refik Duru*



1



2

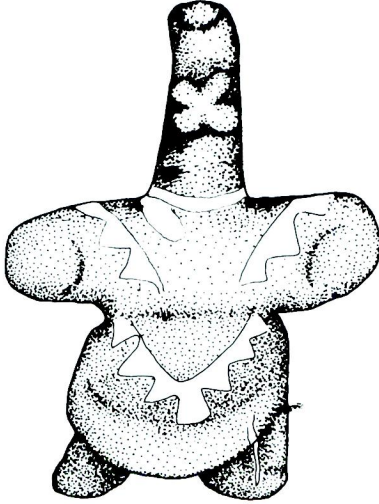
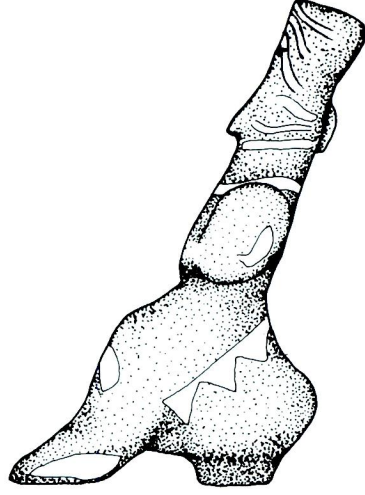
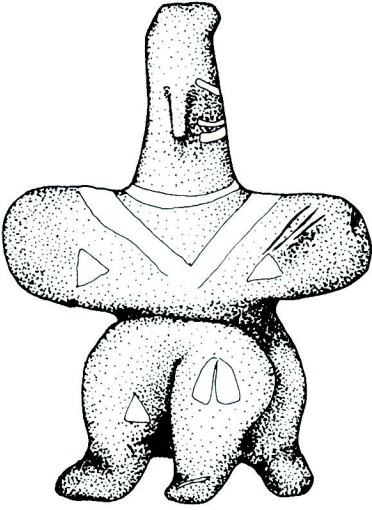


3



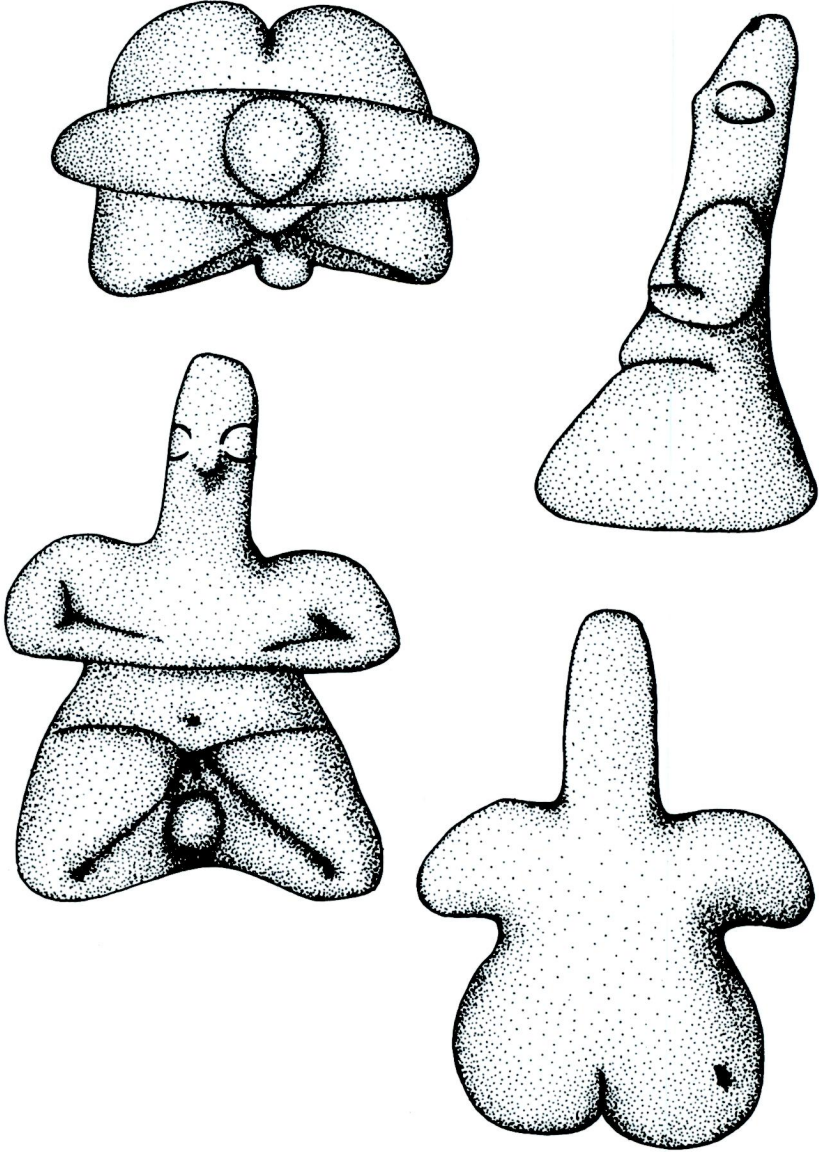
Levha 21 - TD'den mermer kaplar.

*Refik Duru*

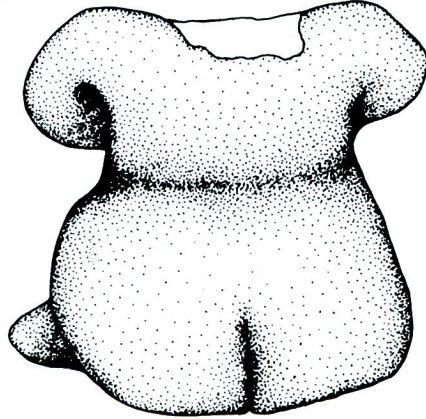
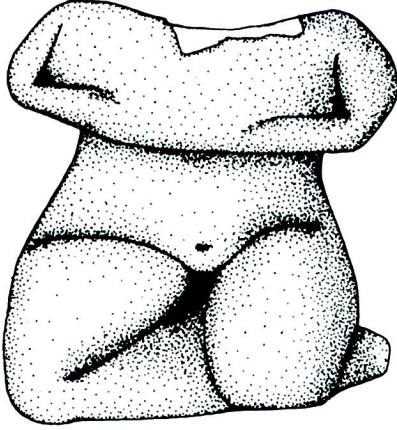
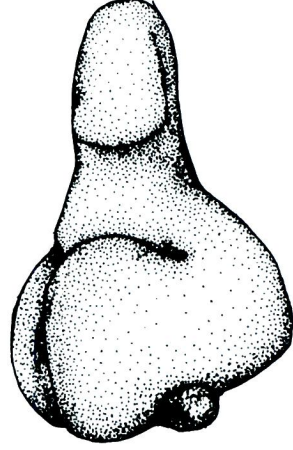
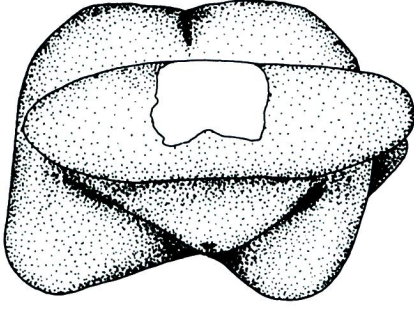


Levha 22 - KAD'tan pişmiş toprak figürin.

*Refik Duru*

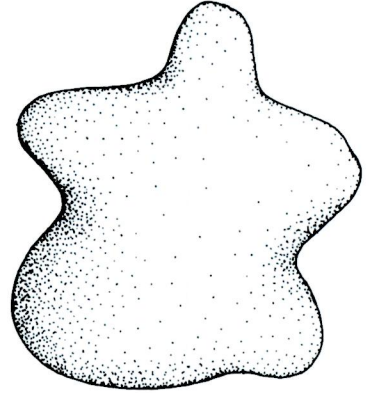
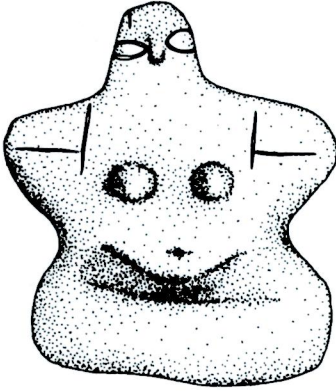
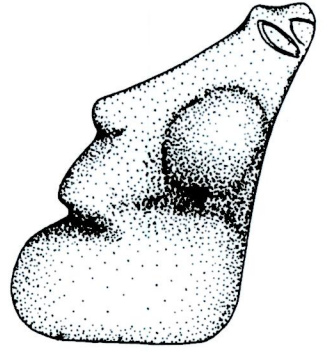
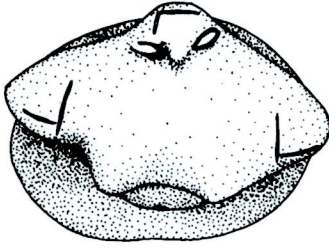


Levha 23 - KAD'tan doğum yapan kadın figürünü.



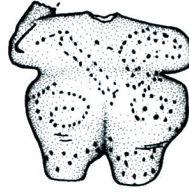
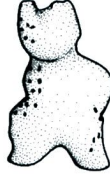
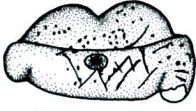
Levha 24 - KAD'tan oturan figürin.

*Refik Duru*

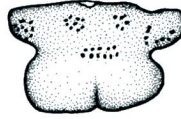
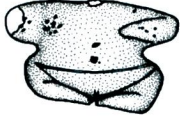


Levha 25 - KAD'tan yarı stilize figürin.

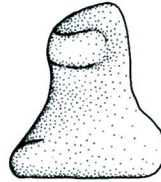
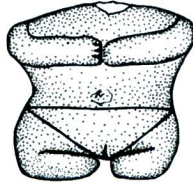
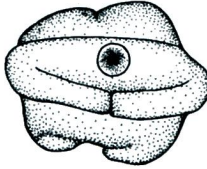




1



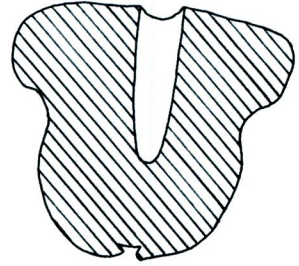
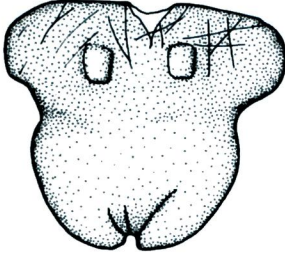
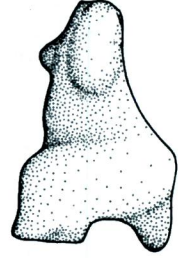
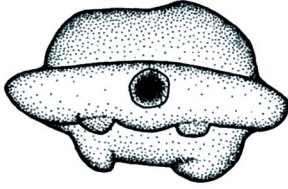
2



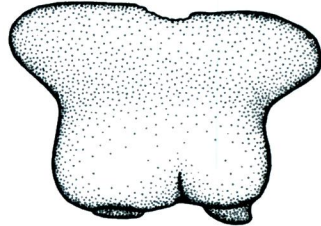
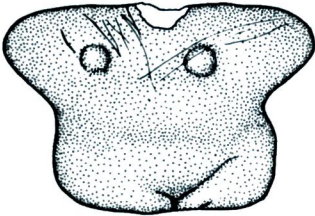
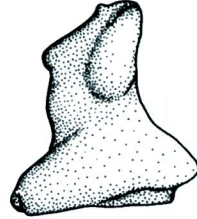
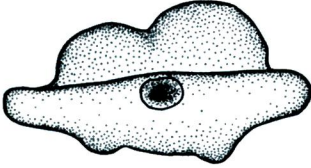
3



Levha 26 - KAD'tan yarı stilize idoller.



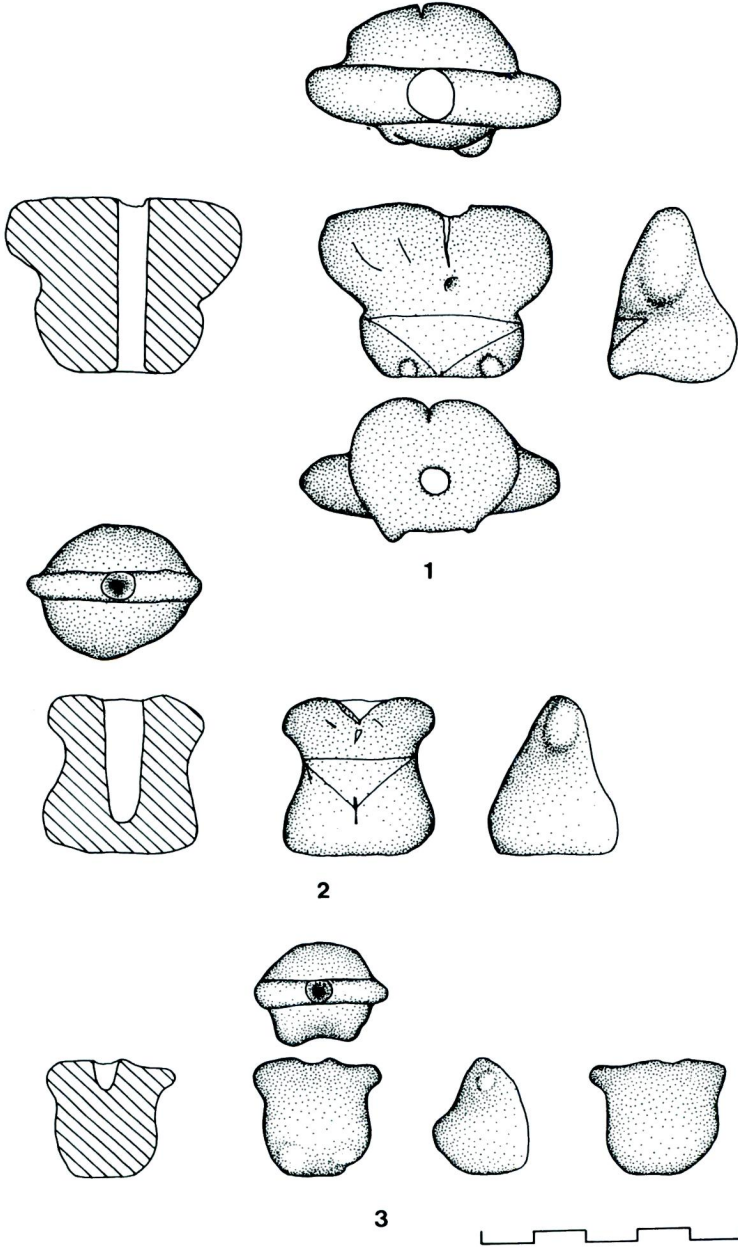
1



2

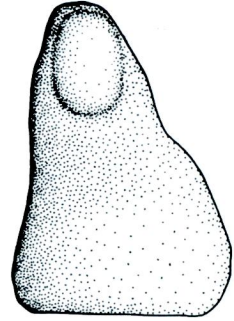
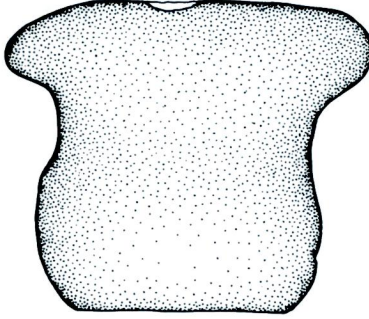
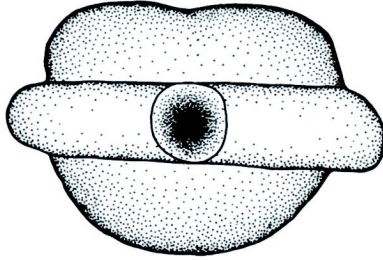


Levha 27 - KAD'tan yarı stilize idoller.

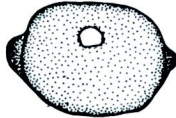
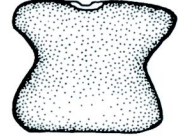
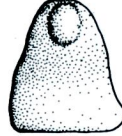
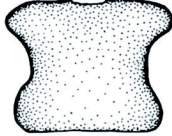
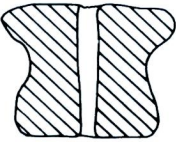
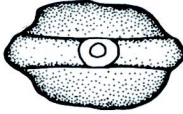


Levha 28 - KAD'tan idoller.

*Refik Duru*



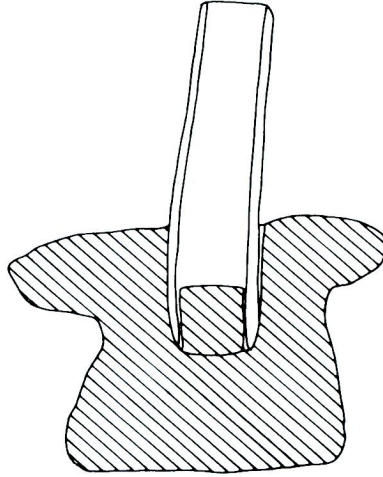
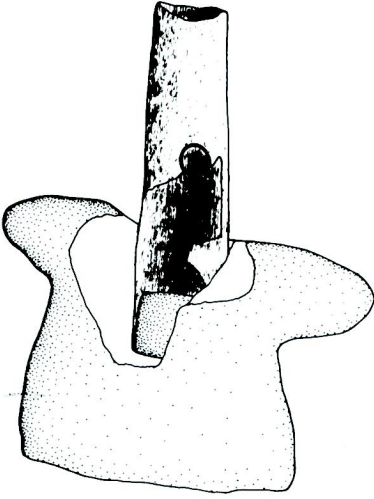
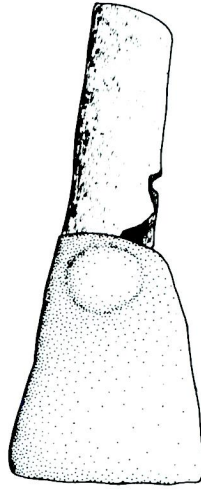
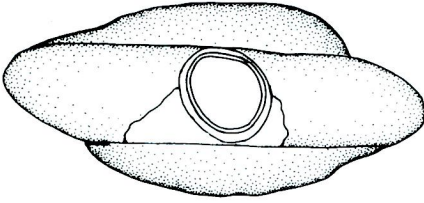
1



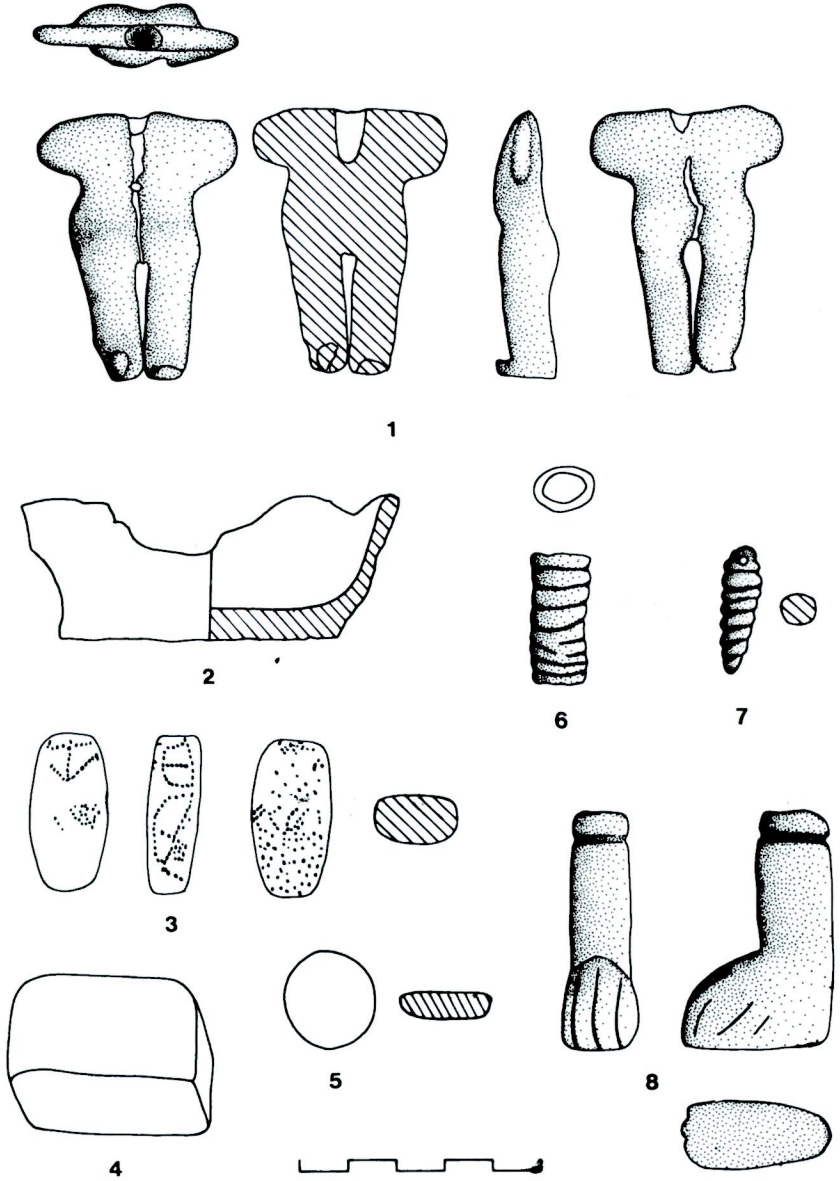
2



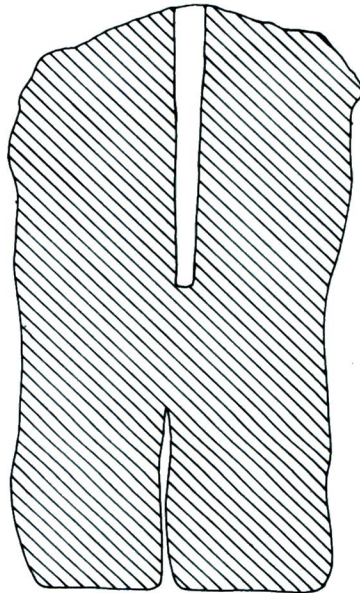
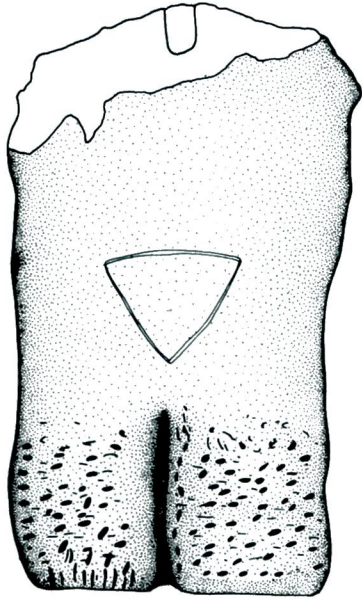
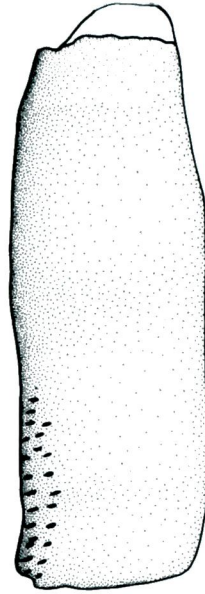
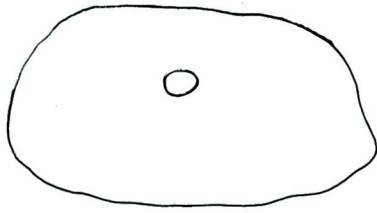
Levha 29 - KAD'tan idoller.



Levha 30 - KAD'tan kemik başlı idol.



Levha 31 - 1. Kutsal Alan'da bulunmuş bir figürin (1), 1. Kutsal Alan'da bulunmuş pişmiş topraktan nesnelere (2-5), askı taneleri (6-7), pabuç biçimli askı tanesi (8).



Levha 32 - KAD'tan idol.

*Refik Duru*



1

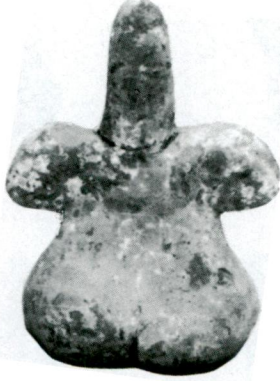
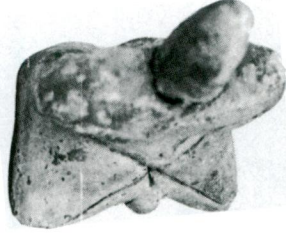


2



Levha 33 - KAD'tan figürinler.





Levha 34 - KAD'tan doğum yapan kadın figürünü.

**Refik Duru**



1



2



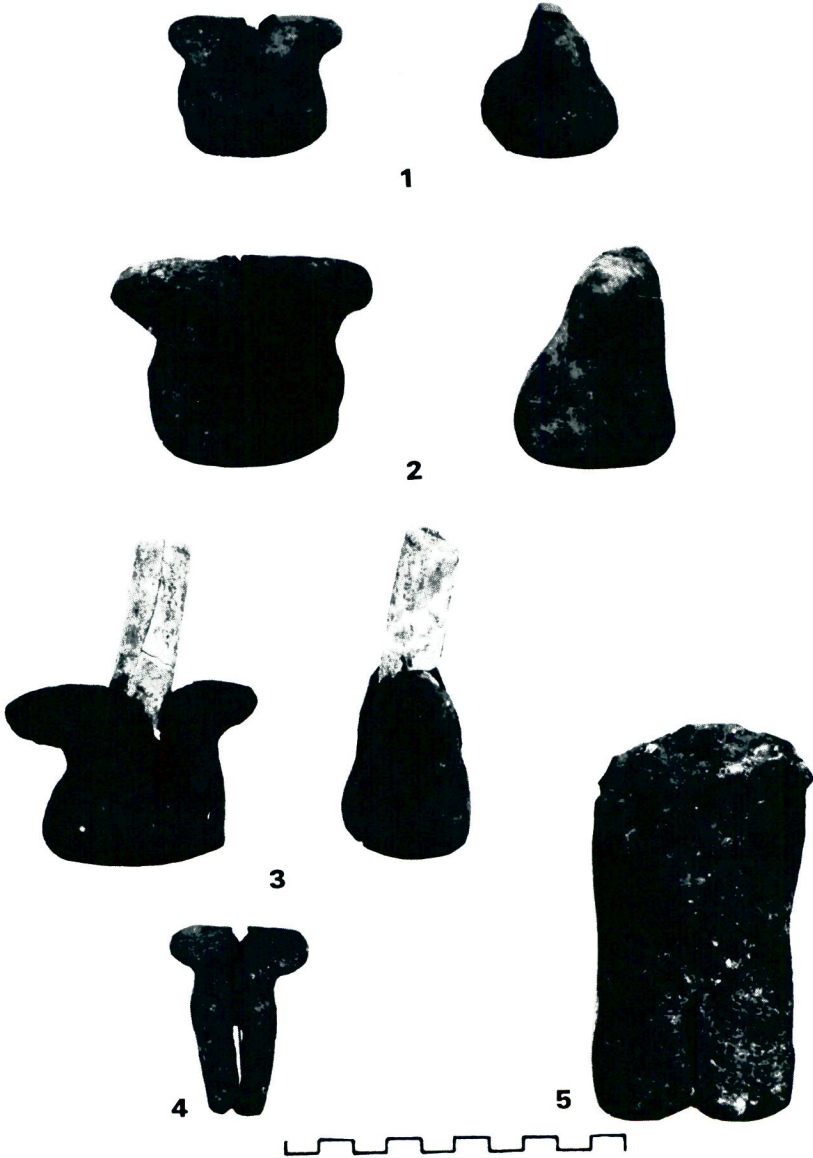
3



4

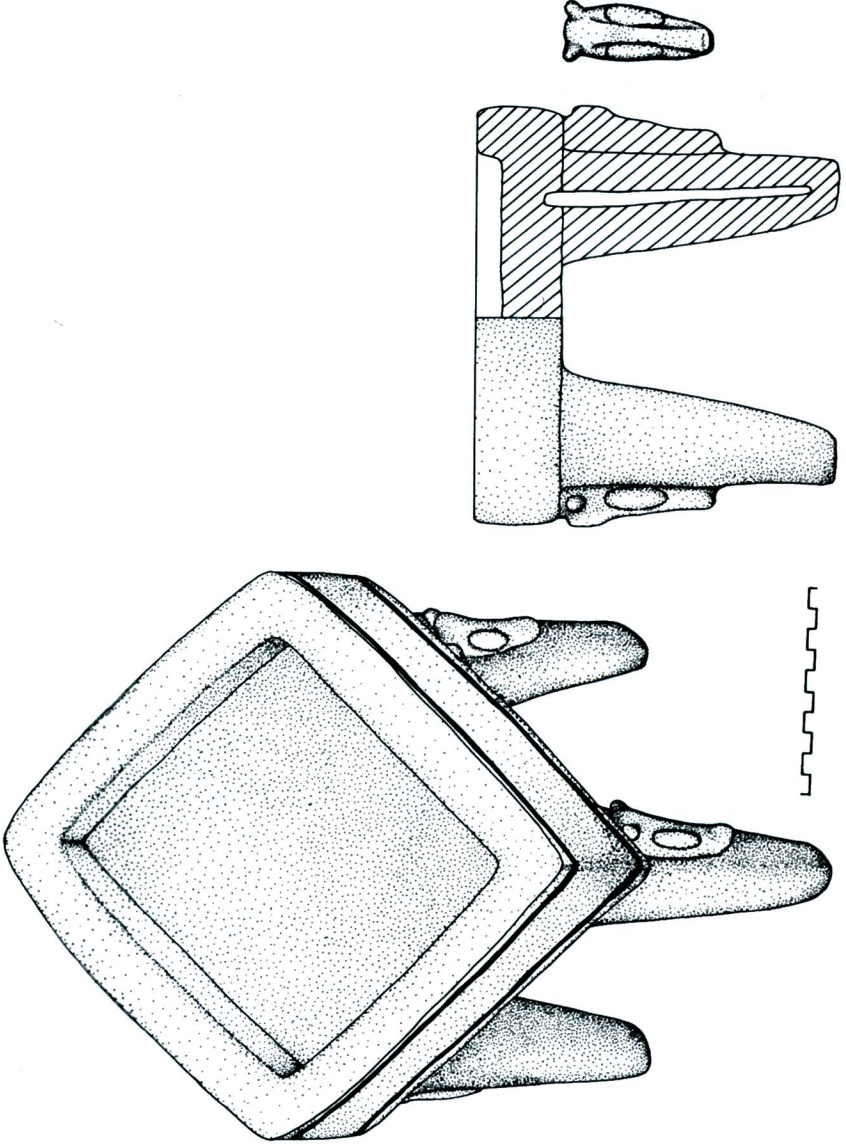


Levha 35 - KAD'tan yapı sülize figürinler.

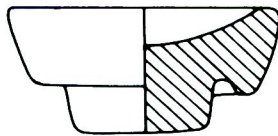
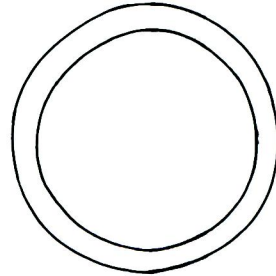
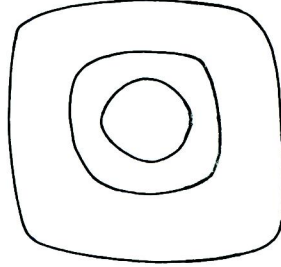
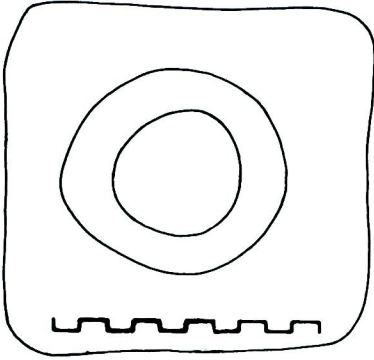
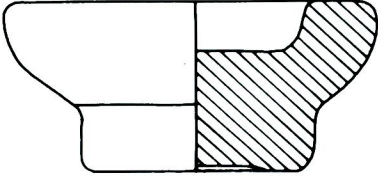
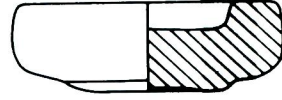
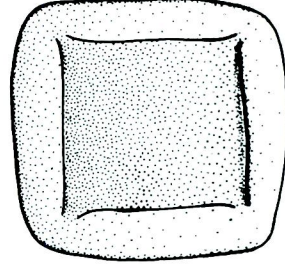
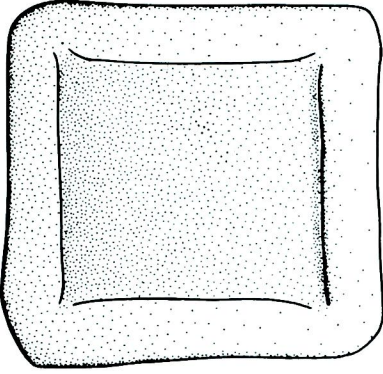


Levha 36 - KAD'ın idolleri.

**Refik Duru**



Levha 37 - TD de bulunan pişmiş topraktan masa.

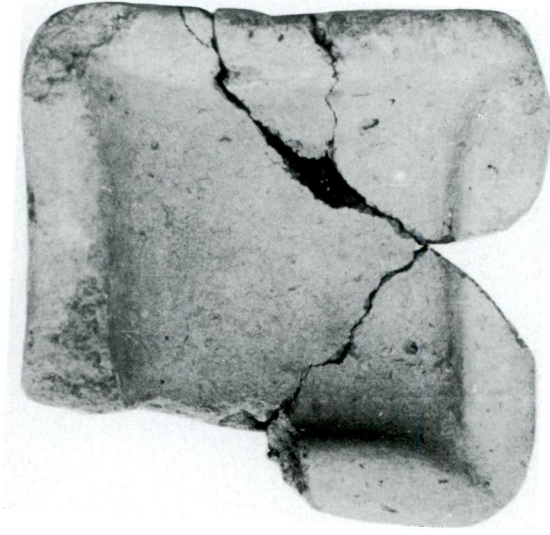


Levha 38 - Pişmiş topraktan tablalar.

**Refik Duru**



**Levha 39 - Pişmiş topraktan masa.**



1



2

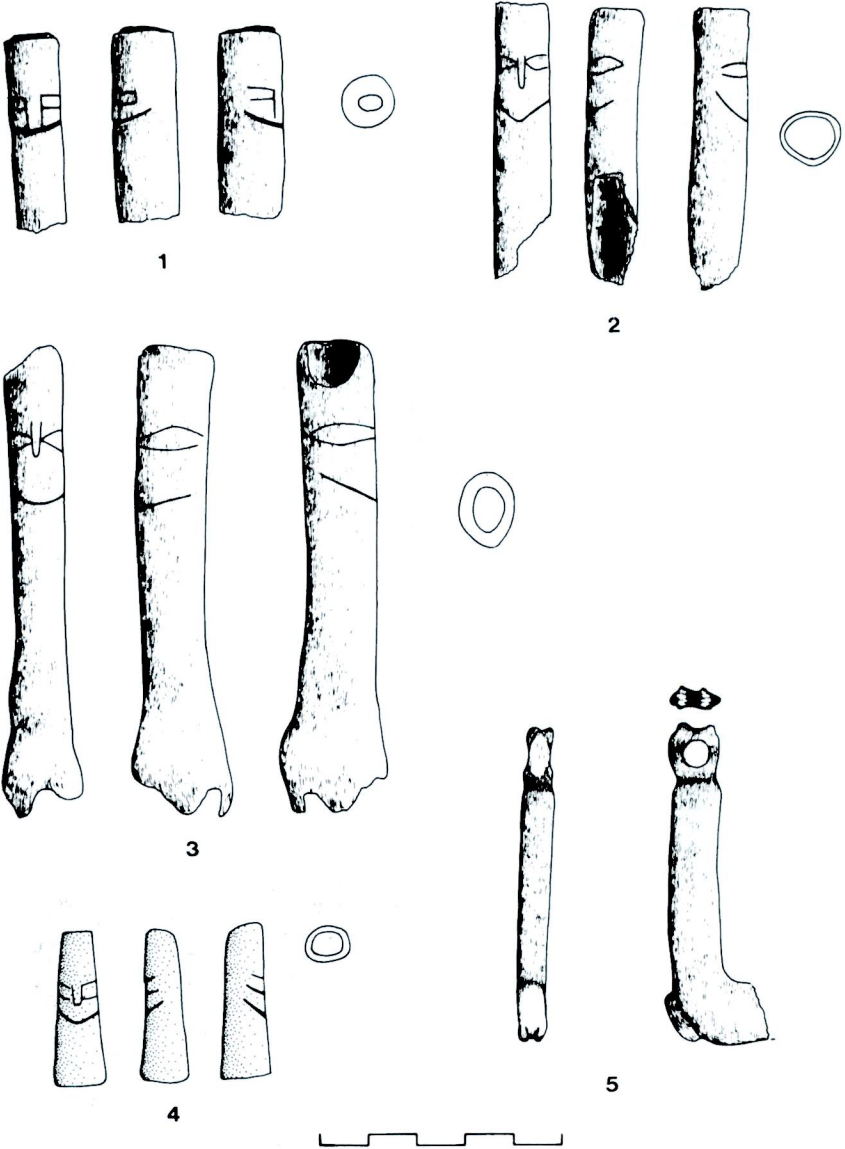


3



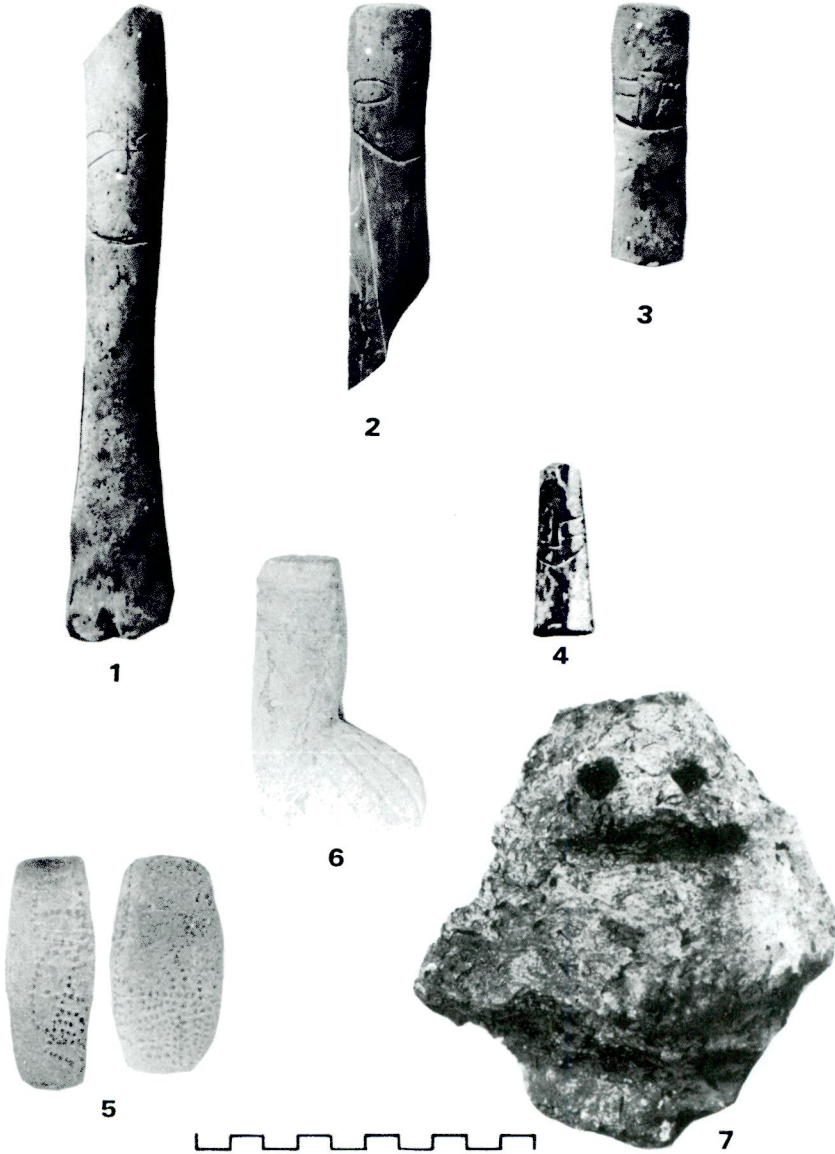
Levha 40 - Pişmiş topraktan tablalar.

Refik Duru



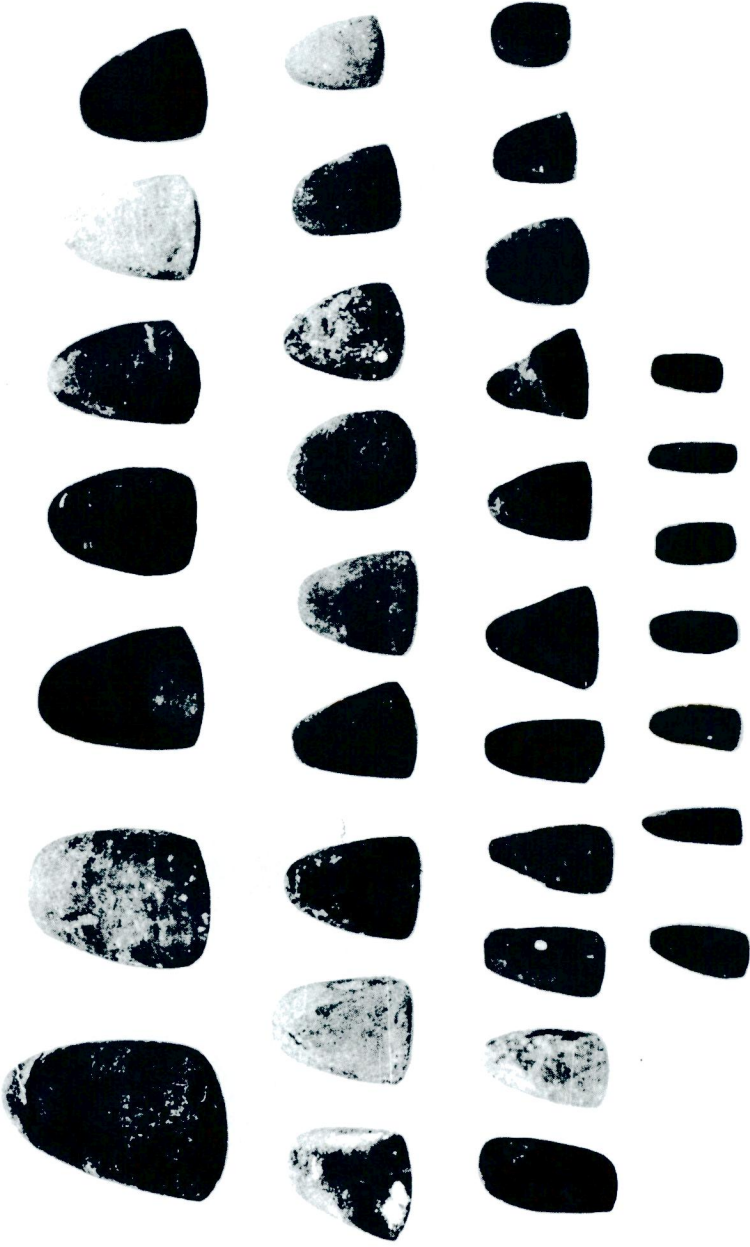
Levha 41 - Kemikten idol başları (1-3), taştan figürin başı (4), kemik nesne(5).



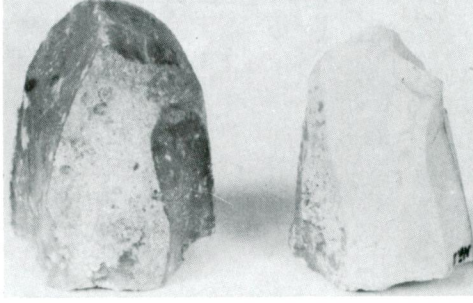


Levha 42 - Kemikten idol başları (1-3), taştan figürin başı (4), 1. Kutsal Alan'da bulunan noktali pişmiş toprak nesne (5), taştan çizme biçimli askı tanesi (6), insan yüzü ocak başı parçası (7).

*Refik Duru*



Levha 43 - Her iki yerişim evresinde bulunmuş taş keski ve baltalardan bazıları.



1



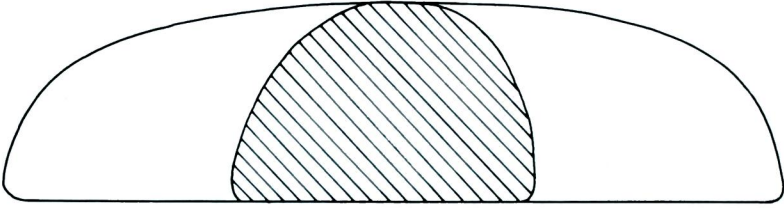
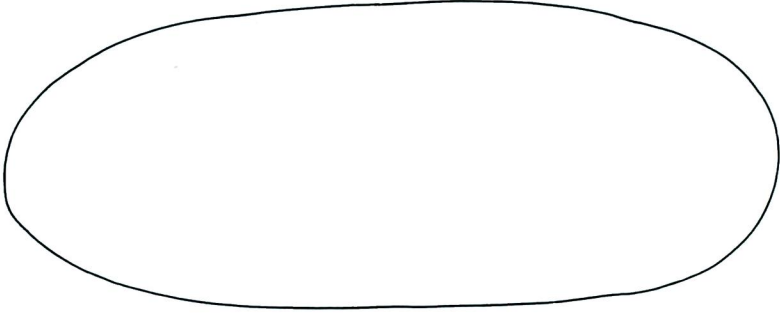
2



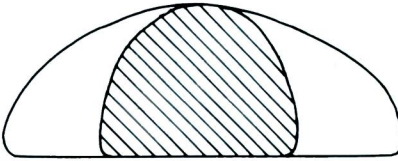
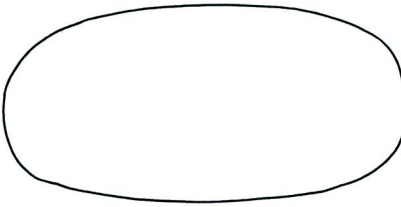
3

Levha 44 - KAD'tan çakmaktaşı dilgi çekirdekleri (1), Tapınağın merdiveninin arka tarafında, bir çukur içinde bulunan sileks dilgiler toplu halde (2), sileks dilgilerin en büyüklerinden birkaçı (3).

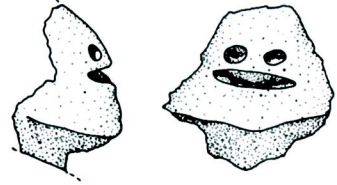
Refik Duru



1



2



3



Levha 45 TD'nin kaplumbağa sırtlı (plano-konvex) kerpiçleri (1-2) ve insan yüzlü ocak başı (3).