



Research Paper / Makale

Glass Fibre Reinforced Concrete (GFRC)

Muhammed İSKENDER, Bekir KARASU

Anadolu University, Engineering Faculty, Department of Materials Science and Engineering, 26555, Eskişehir
TÜRKİYE, bkarasu@anadolu.edu.tr

Received/Geliş: 27.12.2017

Revised/Düzeltilme: 04.01.2018

Accepted/Kabul: 08.01.2018

Abstract: In the 1940's, potential of glass as a construction material was realized and improvement continued with the addition of zirconium dioxide in 1960's for harsh alkali conditions. To enhance durability of materials, new generation of glass fibres directed to improvement process. In this way, glass fibre reinforced concrete (GFRC) was started to produce for the satisfaction of different demands. Scientific studies and tests on the GFRC have shown that the physical and mechanical properties of the GFRC change depending on the quality of the materials and the accuracy of the production methods. GFRC can be used wherever a light, strong, fire resistant, weather resistant, attractive, impermeable material is needed. As technology advances, it is possibly expected to build the whole building and complex freeform with low cost. In recent years, the effect of glass fibres in hybrid mixtures has been investigated for high-performance concrete (HPC), an emerging technology termed, which has become popular in the construction industry.

Keywords: Glass, Fibre, Reinforcement, Concrete, Properties, Application, Development

Cam Lif Takviyeli Beton

Özet: 1940'lı yıllarda camın bir yapı malzemesi olarak sahip olduğu potansiyelinin farkına varılmış ve 1960'larda zirkonyum dioksit katkısıyla iyileştirmelere devam edilmiştir. Malzemelerin kimyasal dayanımını arttırmak için yeni nesil cam lifleri, söz konusu iyileştirme sürecine dâhil edilmişlerdir. Böylece, arzu edilen beklentileri karşılamak üzere cam takviyeli beton üretimi başlamıştır. Bu grup beton üzerine gerçekleştirilen bilimsel araştırma ve testler cam lifle kuvvetlendirilmiş betonun fiziksel ve mekanik özelliklerinin kullanılan malzemelerin kalitesine ve üretim yönteminin hassasiyetine bağlı olarak değiştiğini göstermiştir. Böylesi betonlar, hafif, sağlam, ateşe ve hava koşullarına karşı dayanıklı, sızdırmaz malzeme ihtiyacı doğduğunda kullanılabilirlik arz etmektedirler. Teknoloji ilerlerken bir binanın tamamının cam takviyeli betonlarla düşük maliyetle yapımının mümkün olabileceği beklentisi de artmaktadır. Geçtiğimiz yıllarda cam elyafların hibrid karışımlardaki etkisi yüksek performanslı beton elde etmek amacıyla araştırılmaya başlanmıştır. Bu yeni teknoloji inşaat sektöründe popüler hale gelmiştir.

Anahtar kelimeler: Cam, Lif, Kuvvetlendirme, Beton, Özellikler, Uygulama, Gelişme

1. Introduction

Glass fibre reinforced concrete (GFRC) is a material that is making a significant contribution to the economics, technology and aesthetics of the construction industry worldwide for over 40 years. GFRC is one of the most versatile building materials available to architects and engineers [1–2]. Compared to traditional concrete, it has complex properties because of its special structure. Different parameters such as water–cement ratio, porosity, composite density, inter filler content, fibre content, orientation and length, type of cure influence properties and behaviour of GFRC as well as accuracy of production method [2–4]. GFRC can be produced as thin as 6 mm so their

How to cite this article

İskender, M., Karasu, B., "Glass Fibre Reinforced Concrete (GFRC)" El-Cezerî Journal of Science and Engineering, 2018, 5(1); 136-162.

Bu makaleye atıf yapmak için

İskender, M., Karasu, B., "Cam Lif Takviyeli Beton" El-Cezerî Fen ve Mühendislik Dergisi 2018, 5(1); 136-162

weight is much less than traditional pre-cast concrete products. Progressing of 3D-printing technology with glass fibre reinforced ink can build a whole building and complex architecture forms with high reliability as well as the use of premix, spray-up, hybrid methods of GFRC. Self-cleaning environmentally friendly panels for industrial construction have been contributing to the GFRC both in terms of cost and popularity. The use of glass fibre in the High Performance Concrete (HPC) class, being a class with extremely high mechanical performance, durability, workability and aesthetics, has gained momentum in recent years. The design and manufacture of GFRC products is covered by international standards, which have been developed in Europe, America, Asia and Australasia. GFRC is manufactured in over 100 countries [5–6].

2. Brief History of GFRC

Potential of glass as a construction material was realized in the 1940's. But, since the glass has very low alkali resistance to corrosion and loss of tensile strength of the glass fibres it became very difficult to be mixed with concrete which is alkaline in nature. Thus, a better glass being alkali resistant was made with the content of high level of zirconium dioxide in the mid-1960s. From this time such fibres became commercially available and new fibres and their applications were covered by patents [6–7]. In early 1980s, as evolved new generation of fibres composites throughout the matrix provided substantially increased tensile, flexural and impact strength. EN standards were developed, the quality control was increased for the best practice in production and designs supported by the International Glass Fibre Concrete Association. In the early years of new millennium rapid increase in GFRC production with the construction burst world-wide. Its growth slowed down due to the global economic crisis at one point, but the use of GFRC by major architects of the world was widespread in different areas [7–8].

3. Production of GFRC

3.1 Production Methods

There are two main production techniques of GFRC, usually preferred as spray-up and pre-mix. In the spray-up process, the mortar is produced separately from the fibres, which are mixed only at the jet of the spray gun. The glass fibre strands are cut within the spray gun to the required size, usually being between 25 mm and 40 mm and are about 4–5 % of the total mixture weight. Using matrix without fibres, a thin coat is created as thin as possible by spraying. Next layers of matrix with fibres are quickly applied to ensure integrity. After the bulk of the GFRC is built-up on it in layers the mixture is provided to toughen. Covering layer is usually 3–5 mm thick, depending on the type of surface treatment. Each pass of the spray gun deposits a layer approximately 4–6 mm in thickness, however, has to be carefully an adequate thickness in corners and complex shapes. Finally, the structure compacted with a cylindrical roller or a float so as to the impregnation of the fibres within the mortar and the removal of the air retained within the mixture. Using a depth gauge or a template, thickness of layer is checked in the specification for GFRC being the minimum (Figure 1) [9–10].

In the GFRC production method by pre-mixture and casting, cement matrix is firstly produced and pre-cut glass fibers, between 2–4 % (usually 3.5 %) weight, are then mixed. The length of the pre-cut fiber is usually 6–12 mm, however, longer fibers lead to restrict to the mixture workability. Respectively, the matrix is produced in a high-shear mixer and chopped fiber strands are incorporated in a low-speed mixing regime because of maximum workability. This facilitates their dispersion at the highest practical volume content with a minimum damage to the fibers. Production with pre-mix GFRC may involve several procedures such as injection and vibration, pressing, or shotcreting (Figure 1) [11–12].



Figure 2. Spray-up application [10].

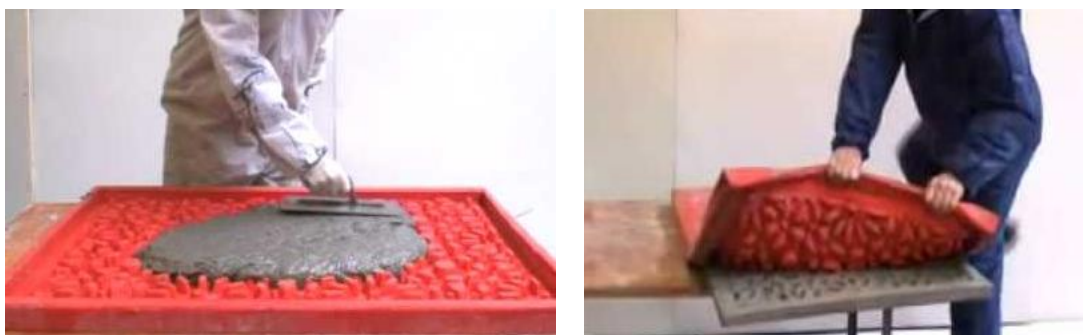


Figure 3. Pre-mixture and casting process [12].

Besides these two main production techniques there is also other production method: hybrid process. In alternative hybrid method uses hopper gun to spray the face coat. The fibre loaded backer mixture is often poured or hand packed, just like ordinary concrete. Once the thin face mixture is sprayed into the forms it is allowed to stiffen up before the backer mixture is applied so that prevents the backer mixture from being pushed through the thin face mixture. The face and backer mixtures are applied at different times because of the consistency can be different. It is always important to ensure the gross makeup similarly water/cement ratios and polymer contents should be the same to prevent curling. However, the heavy dose of fibres in the backer mixture often precludes spraying, so traditional methods is required (Figure 3) [11].



Figure 4. Spraying the face coat-face coat ready for backer mix-hand packing backer on upright [11].

3.2 Curing

Curing stage isn't essentially different from that in normal concrete technology. Moreover, the GFRC product is much more sensitive to the deleterious effects of improper water curing. Higher surface area and the low thickness of the GFRC can lead to increased drying and reductions in its strength. Because of the polymer content, long term moist curing is often unnecessary. Small amounts of acrylic polymers in the fresh mixture keep the internal moisture in and prevent its loss by evaporation. Sudden and rapid drying-out or large temperature changes must be avoided to ensure that the GFRC reaches adequate strength for the element to be safely removed from a mould. Generally, GFRC pieces are stripped the next day, mostly 16 and 24 hours after casting. Longer curing will always yield better concrete, but the general tendency is strip soon after casting [11, 13].

4. Structural Properties of GFRC

The properties of fibre reinforced cementitious materials are dependent on the structure of the composite. Therefore, in order to analyse these composites, and to predict their performance in various loading conditions, their internal structure must be characterized. The three components that must be considered are:

1. The structure of the bulk cementitious matrix,
2. The shape and distribution of the fibres,
3. The structure of the fibre-matrix interface [13].

4.1 Matrix

The bulk cementitious matrix can be divided into two types depending on the particulate filler (aggregate) which it contains: paste/mortar (cement/sand-water mix) and concrete (cement-sand-coarse aggregate-water mix). Glass fibre reinforced concrete pastes or mortars are usually applied in thin sheet which are employed mainly for cladding. In these applications the fibres act as the primary reinforcement and their content is usually in the range of 5-15 % by volume. Special production methods need to be applied for manufacturing such composites.

4.2 Fibers

There are generally two distinctly different types of fibre-reinforcing arrays: *continuous reinforcement* in the form of long fibres which are incorporated in the matrix by techniques such as filament winding or by the lay-up of layers of fibre mats; and *discrete short fibres*, usually less than 20 mm long, which are incorporated in the matrix by methods such as spraying and mixing. The reinforcing array can be further classified according to the dispersion of the fibres in the matrix, as random 2D or 3D.

The first is random, three-dimensional (3D) reinforcing. This occurs when fibres are mixed into the concrete and the concrete is poured into forms. Because of the random and 3D orientation, very few of the fibres actually are able to resist tensile loads that develop in a specific direction. This level of fibre reinforcing is very inefficient, requiring very high loads of fibres. Typically, only about 15 % of the fibres are oriented correctly.

The second level is random, two-dimensional (2D) reinforcing. This is what is in spray-up GFRC. The fibres are oriented randomly within a thin plane. As the fibres are sprayed into the forms, they lay flat, conforming to the shape of the form. Typically, 30 to 50 % of the fibres are optimally oriented [13-14].

4.3 The Structure of the Fibre–Matrix Interface

Cementitious composites are characterized by an *interfacial transition zone* in the vicinity of the reinforcing inclusion, in which the microstructure of the paste matrix is considerably different from that of the bulk paste, away from the interface. The nature and size of this transition zone depends on the type of fibre and the production technology; in some instances, it can change considerably with time. When considering the development of the microstructure in the transition zone, a bundled filament should be made and with bundled filaments only the external filaments tend to have direct access to the matrix [14–15].

5. Properties of GFRC

Different parameters such as water–cement ratio, porosity, composite density, inter filler content, fibre content, orientation and length, and type of cure influence properties and behaviour of GFRC. GFRC derives its strength from an optimal dosage of fibres and acrylic polymer. The polymer and concrete matrix serves to bind the fibres together and transfer loads from one fibre to another via shear stresses through the matrix. Density and porosity are effective on the degree of compaction [16–17].

In concrete structure, efficiency of fibres depends upon their orientation. When the fibres are aligned perpendicular to the crack openings in the direction of stress, the positive effect of fibres on the performance of GFRC is increased [18–19]. Along with that because of requiring the improvement in the long–term performance of GFRC the type of glass fibres such as E and alkali–resistant (AR) glass fibres must also be considered as well as the environmental conditions. When alkali attack considered main deterioration mechanism in E glass, there should be made an attention to seal the fibres completely from the matrix or used a very low alkali cementitious material. On the other hand, so as to improve the alkaline resistance and durability of GFRC with AR glass fibres, the main effort should be directed modifying the microstructure of the matrix in the vicinity of the glass filaments. This could be provided with controlling of the hydration process in its vicinity or changing the composition of the matrix.

The rate of ageing is a function of the type of glass fibre. New generation of AR–glass fibres are better than E glass ones. The ageing performance of the composite is also sensitive to the weathering conditions. As the aging continues in different environments, chemical attack may become significant so there is need to develop special glass fibres for better alkali resistance [20]. According to the importance of this parameters and condition affecting the features of GFRC, a review is made to demonstrate their effects on mechanical and physical properties of concrete. Some decorative materials which exhibit physical and mechanical properties of GFRC materials shown in Figures 4–5.



Figure 0. Precast GFRC table top with fire [21].



Figure 5. Design for bendable concrete (lattice pieces) [22].

5.1 Mechanical Properties of GFRC

5.1.1 Compressive Strength

The compressive strength of concrete has been increased with the addition of fibres to concrete mixes, however further addition of fibre indicated a gradual decrease in strength aspects [23–24].

5.1.2 Modulus of Elasticity

In heterogeneous and multiphase materials such as concrete, the density and the characteristics of the transition zone determine the elastic modulus behaviour of the composite. The experimental test results exhibit that the use of fibres has no important influence on the modulus of elasticity of concrete. It was reported that mostly a little reduction in the modulus of elasticity of the concrete at a low glass fibre content [25–26].

5.1.3 Stress–Strain Curve

Stress-strain behaviour is affected from different parameters such as the effect of fibre lengths, aggregate type and effect of loading rate. As it is given in Figure 6, GFRC has a significant impact on the ascending portion of the stress–strain curve and additionally, descending part of the stress–strain curve is an essential key element under compression loads [27–28].

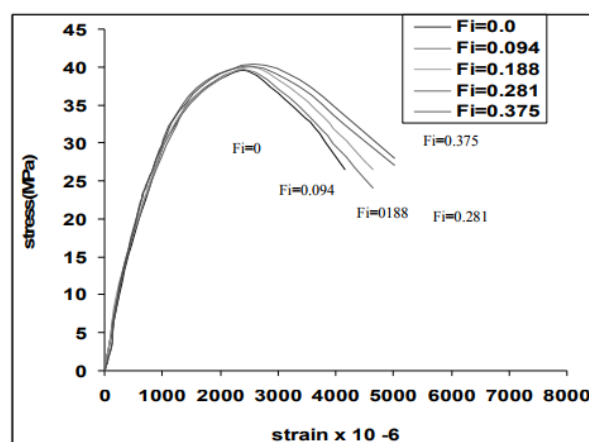


Figure 6. Stress–Strain diagram with differences at fibre ratios [28].

5.1.4 Flexural Strength

Glass fibres have an effect on the increase in the flexural strength of concrete. Figure 7 presents that an increase in the fibre content (but not much increase) resulted in an increase in the flexural strength of concrete, compared to plain concrete specimen. The fibres resist the propagation of cracks and tend to reduce the sudden failure of structure of concrete and so they lead to an increase in the load carrying capacity of concrete [29–31].

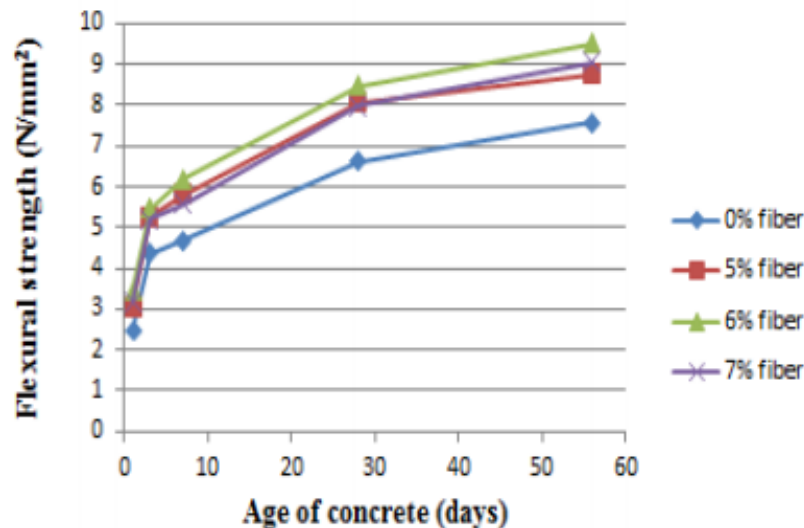


Figure 7. Variation of flexural strength with the age of concrete [31].

6. Physical Properties of GFRC

6.1 Drying shrinkage

Drying shrinkage has a significant effect on the structural and durability performance of the concrete. The mechanism of shrinkage of cementitious material is complex, but total shrinkage is principally affected by the aggregate proportion and type, and water/cement ratio, having influence on drying and causing many micro cracks propagation simultaneously. Shrinkage in concrete structures may also trigger forms of damage in concrete like as corrosion, freeze damage in this manner, seriously, shorten the service life of concretes [32–33]. Alkali-resistant glass fibres are effective in controlling restrained shrinkage cracking of concrete and they promote multiple cracking and reduce crack widths. Figures 8 and 9 indicate that an increase in the fibre content resulted in a significant reduction in the shrinkage strain of concrete, particularly from 25 to 75 days, compared to plain concrete specimen.



Figure 8. Plain (left) GFRC (right) restrained shrinkage specimens [34].

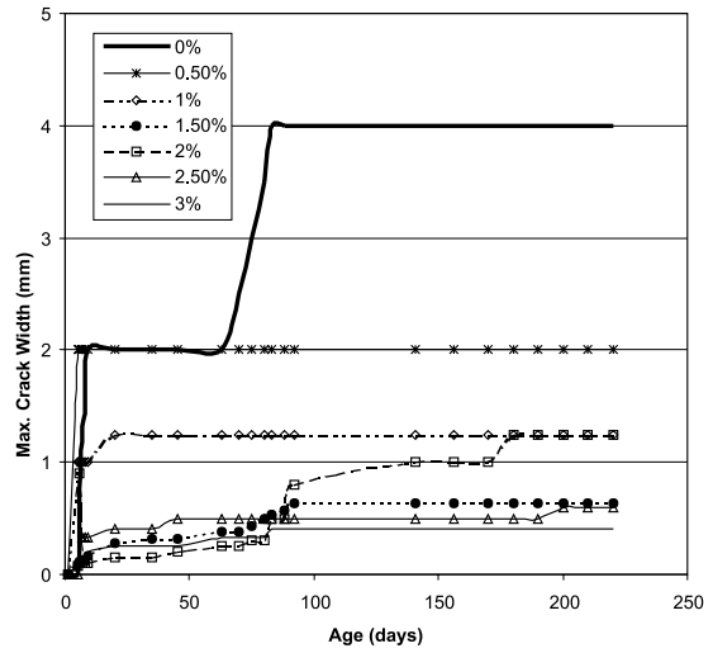


Figure 9. Restrained shrinkage test results for GFRC with different glass fibre contents [34].

6.2 Creep

Because of its poor strain capacity and low tensile strength, concrete is a brittle material and highly susceptible to cracking. These cracks can decrease the lifetime of a structure by allowing aggressive agents. Therefore, the evolution of crack openings through time is important for the durability of concrete [36]. In terms of creep and shrinkage, application technique of GFRC must be taken into account. With pneumatic spraying, glass fibre added into mortar mixture at the time of pouring and there is a significant modification of the compositions embodied in binder consumption. This can effect creep strain [37].

6.3 Porosity, Chloride Penetration Resistance and Electrical Resistivity

Concrete is a multiple-phased material, and it has lots of micro pores which can be transferred thanks to the migrating ions. Therefore, resistivity measurement is a determinative way to explore the microstructure of concrete [38]. Resistivity of concrete is influenced by many factors such as water-cement ratio, concrete composition, admixtures, curing condition, humidity. As a result, all of these impacts can trigger to increase the risk of steel rebar corrosion in the concrete [39]. This effect can be clearly seen in Figures 10–11. Along with this, chloride presence in the concrete structure can increase electrical current and the risk of corrosion [40]. Alkali resistance GFRC depicts less permeability of chloride into concrete increasing corrosion resistance. Figure 12 indicates that an increase in the fibre content resulted in a significant reduction in the chloride permeability of concrete, compared to plain concrete specimen. Thus, durability which is one of the most important aspects of the concrete, can be improved during working conditions of concrete structures [41].

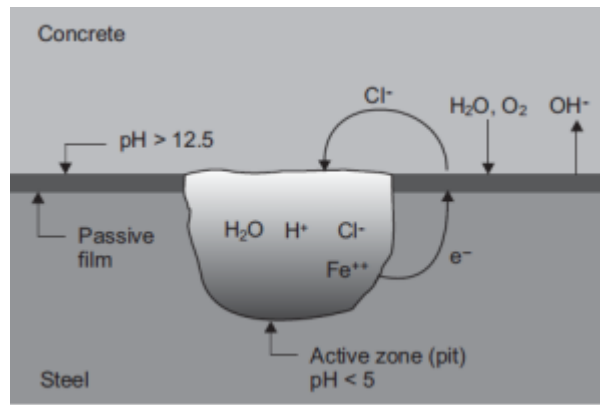


Figure 10. Chloride attack [42].

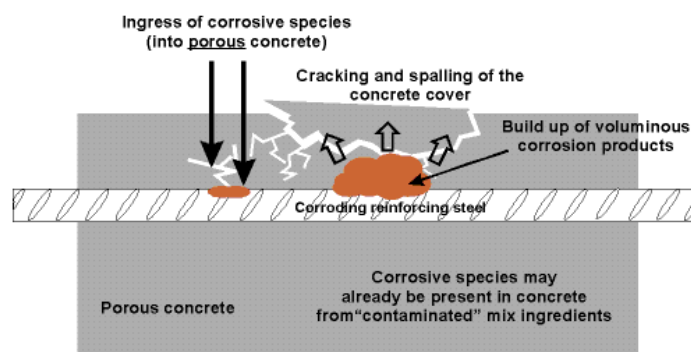


Figure 11. Cracking and spalling of the concrete cover [43].

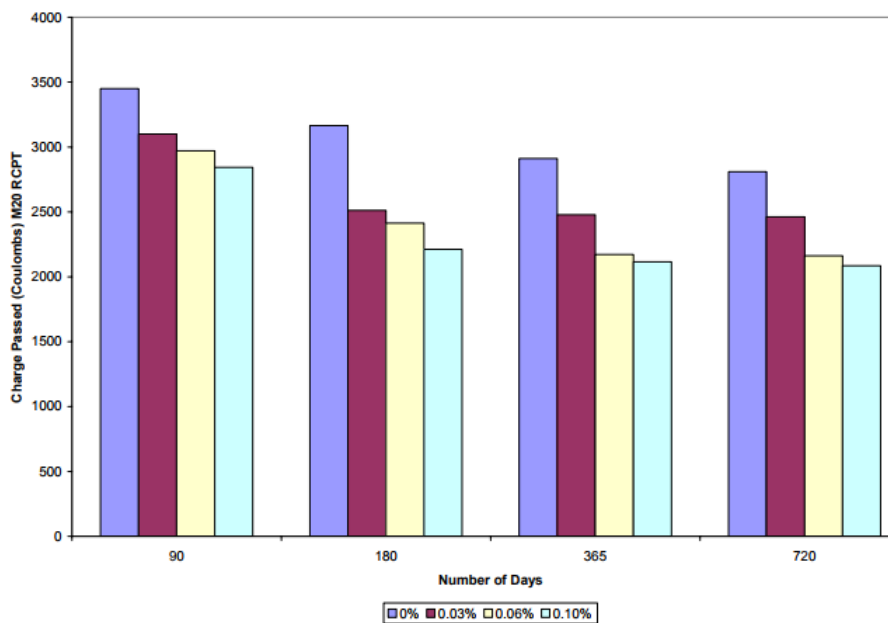


Figure 12. Rapid chloride permeability test (RCPT) (with different glass fibre) for different ages of concrete [41].

The electrical resistivity of concrete is observed to decrease with the increase in water–cement ratio. Besides, because of increasing porosity in concrete by the addition of fibers the resistivity values of fiber concretes are found lower than control concrete one [44].

Fibers can play strong positive result by holding the matrix together even if it is completely dehydrated process which triggered possibility of explosion. Addition of polymer materials to GFRC will affect the fire performance properties [16].

7. Applications and Latest Developments of GFRC

Compared to traditional concrete, GFRC has complex properties because of its special structure. As a result of the structural properties, it has suitable moulding, strong and durable structure. Moreover, because of being fast to install and easy to handle and transport, it provides low cost. It disperses or absorbs sound and it is environmentally friendly.

As total output of these properties, one of the key features of GFRC has been its versatility in use. GFRC is widely and reliably used in architecture (i.e. cladding, mouldings, landscaping), building (i.e. roofing, walls and windows, renovation, foundations and floors), engineering (i.e. permanent formwork, utilities, acoustics, bridges and tunnels, roads, water and drainage).



Figure 13. GFRC pipeline trench application (Courtesy of Nippon Electric Glass America Inc.) [45].



Figure 14. GFRC railroad track slabs for high speed trains (Courtesy of Beaker Corp. USA) [45].



Figure 15. GFRC panels used for heat insulation (Turkish Football Federation) [46]

The use of pre–mix, spray–up, hybrid methods of GFRC is becoming increasingly widespread and some amazing projects have been completed [47–49].



Figure 10. One of the earliest applications of GFRC produced by spray-up process (completed in 1974) [9].



Figure 17. A total of 110 000 m² of GFRC was used (Nanjing Youth Olympic Centre, China, completed in 2014) [9].

Complex freeform architecture is one of the most striking trends in contemporary architecture. Today, design and fabrication of such structures are based on digital technologies, which have been developed in other industries (automotive, naval, aerospace industry) [50]. 3D-printed building is a result of high-efficiency, environmentally-friendly and cost-effective building technology. With the progressing of 3D printing technology a whole building can be built with high reliability, which will doubtlessly make a change to the traditional construction industry. The building is printed using a huge printer which is programmed for special dimensions and specially made high-strength glass fibre reinforced printing ink [51].

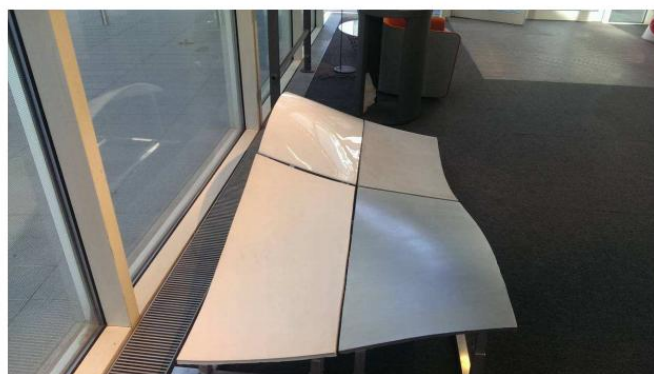


Figure 18. 3D Technology-Foster + Partners made from GFRC-GFRC and acrylic [50].

Because of mass colouring of GFRC is a demanding job, this situation calls for special choice of cement, granulates, fine minerals and pigments, so making it rather costly. Coloured impregnation products are alternative to the mass colouring of architectonic concrete. They provide the graduated decoration of concrete walls and can also ensure water repellence or stain can lead to repellent protection [52].



Figure 19. Colouring solution for GFRC [52].

In Türkiye, self-cleaning environmentally friendly panels for an industrial building for the first time in the world were developed with a unique glass fibre reinforced concrete solution. Because of the building is in the middle of a refinery (Tüpraş), self-cleaning GFRC panels are to be exposed harshest environment such as NO_x and SO_x emissions [53].

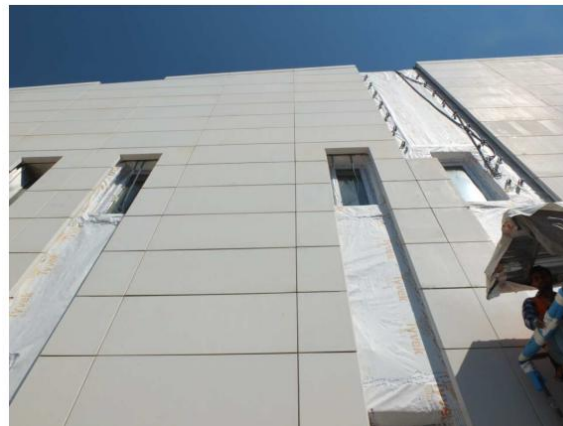


Figure 20. Façade of Tüpraş RUB [53].

High Performance Concrete (HPC) is a class of concrete characterized by extremely high mechanical performance, durability, workability and aesthetics. Due to these features some project references have increased since few years. Glass and hybrid of various fibres can be employed for self-compacting formulations [54–55].

Karasu et al. studied the use of glass in concrete reinforcement [56], the suitability for using glass and fly ash in Portland cement concrete [57], chemical durability behaviour of bulk glasses in the SrO–Mn₂O₃–Fe₂O₃–MgO–ZrO₂–SiO₂ (SMFMZS) system [58–59], the effects of filler glasses on mechanical properties of concrete [60], chemical dissolution mechanism of the SrO–MgO–ZrO₂–SiO₂ (SMZS) system glasses [61], the effect of transition metal oxide additions on the chemical durability of SrO–MgO–ZrO₂–SiO₂ glasses [62], SrO–Mn₂O₃–Fe₂O₃–MgO–ZrO₂–SiO₂ (SMFMZS) system glasses in Portland cement concrete [63], investigations on the alkali durability of the SMFMZS (SrO–Mn₂O₃–Fe₂O₃–MgO–ZrO₂–SiO₂) system glass fibres [64], characterization of commercially available alkali resistant glass fibre for concrete reinforcement and chemical durability comparison with SrO–Mn₂O₃–Fe₂O₃–MgO–ZrO₂–SiO₂ (SMFMZS) system glasses [65], electron microscopy observations on the microstructural evolution of glass fibre reinforced concrete (GFRC) materials [66–67], the use of the SMFMZS (SrO–Mn₂O₃–Fe₂O₃–MgO–ZrO₂–SiO₂) system glass fibres in concrete reinforcement [68], novel glass compositions for concrete reinforcement [69], investigation on fibre production attempts from the borosilicate and SMFMZS (SrO–MgO–Fe₂O₃–Mn₂O₃–ZrO₂–SiO₂) glass system [70], mechanical properties–microstructure relationship in high alkali resistant SMZS (SrO–MgO–ZrO₂–SiO₂) system glass fibre reinforced concrete [71], the effect of waste glass addition to SrO–Mn₂O₃–Fe₂O₃–MgO–ZrO₂–SiO₂ (SMFMZS) glasses [72], novel glass compositions for fibre drawing [73], some chemical and mechanical properties of SMZS (SrO–MgO–ZrO₂–SiO₂) and SMFMZS (SrO–Mn₂O₃–Fe₂O₃–MgO–ZrO₂–SiO₂) system glass fibres reinforced concrete (GFRC) materials [74], mechanical properties of SMFMZS (SrO–Mn₂O₃–Fe₂O₃–MgO–ZrO₂–SiO₂) system glass fibre reinforced concrete (GFRC) materials [75], investigations on reinforcing concrete (GFRC) materials with SMFMZS (SrO–Mn₂O₃–Fe₂O₃–MgO–ZrO₂–SiO₂) system glass fibres [76], the usage of high alkali resistance SrO–Mn₂O₃–Fe₂O₃–MgO–ZrO₂–SiO₂ (SMFMZS) system glass fibres in cement structure and their characterization [77].

Reis and Ferreira reported the assessment of fracture properties of epoxy polymer concrete reinforced with short carbon and glass fibre [78] and freeze–thaw and thermal degradation influence on the fracture properties of carbon and glass fibre reinforced polymer concrete [79].

Purnell and Beddows reported that durability and simulated ageing of new matrix glass fibre reinforced concrete [80]. Avci et al. made a search on mixed–mode fracture behaviour of glass fibre reinforced polymer concrete [81]. Abbasi and Hogg examined the temperature and environmental effect on glass fibre rebar: modulus strength and interfacial bond strength with concrete [82] and a model for predicting the properties of the constituents of a glass fibre rebar reinforced concrete beam at elevated temperature simulating a fire test [83].

El–Ragaby et al. searched for fatigue analysis of concrete bridge deck slabs reinforced with E–glass/vinyl ester FRP reinforcing bar [84]. Razaqpure et al. investigated blast loading response of reinforced concrete panels reinforced with externally bonded GFRP laminates [85].

Lee et al. conducted a research on interfacial bond strength of glass fibre reinforced polymer bars in high–strength concrete [86]. Tang et al. worked on bond performance of polystyrene aggregate concrete (PAC) reinforced with glass fibre–reinforced polymer (GFRP) bars [87].

Asokan et al. studied assessing the recycling potential of glass fibre reinforced plastic waste in concrete and cement composites [88]. Scheffler et al. reported the interphase modification of alkali–resistant glass fibres and carbon fibres for textile reinforced concrete I: fibre properties and durability [89] and II: water absorption and composite interphases [90]. Hao et al. conducted a

search on bond strength of glass fiber reinforced polymer ribbed rebars in normal strength concrete [91].

Asokan et al. worked on the improvement of mechanical properties of glass fibre reinforced plastic waste powder filled concrete [92]. Abtahi et al. made a general review on fibre-reinforced asphalt-concrete [93].

Soong et al. published a paper on the fundamental mechanisms of bonding of glass fibre reinforced polymer reinforcement to concrete [94]. Issa et al. conducted a research on the influence of fibres on flexural behavior and ductility of concrete beams reinforced with GFRP rebars [95]. Tysmans, et al. established form finding methodology for forced-modelled anticlastic shells in glass fibre textile reinforced cement composites [96]. Enfedaque et al. worked on the failure and impact behavior of facade panels made of glass fibre reinforced cement (GRC) [97].

Borhan investigated the properties of glass concrete reinforced with short basalt fibre [98]. Choi et al. studied bond strength of glass fibre-reinforced polymer bars in unconfined concrete [99]. Barhum and Mechtcherine reported the effect of short, dispersed glass and carbon fibres on the behaviour of textile-reinforced concrete under tensile loading [100]. Emiroğlu et al. made ANFIS and statistical based approach to prediction the peak pressure load of concrete pipes including glass fiber [101]. Zheng et al. have made an investigation of structural behaviours of laterally restrained GFRP reinforced concrete slabs [102]. Limbachiya et al. examined performance of granulated foam glass concrete [103]. Nunes and Reiss carried out a research on the estimation of crack-tip-opening displacement and crack extension of glass fiber reinforced polymer mortars using digital image correlation method [104]. Li et al. studied the flexural behavior of GFRP-reinforced concrete encased steel composite beams [105].

Sayyar et al. conducted a study on the low-cost glass fiber composites with enhanced alkali resistance tailored towards concrete reinforcement [106]. Job has written a paper on the history and progress of recycling glass fibre reinforced composites-history and progress [107]. Saribiyik et al. reported the effects of waste glass powder usage on polymer concrete properties [108]. Shi-Cong and Chi-Sun researched a novel polymer concrete made with recycled glass aggregates, fly ash and metakaolin [109]. Carvelli et al. investigated high temperature effects on concrete members reinforced with GFRP rebars [110]. Robert and Benmokrane carried on working on combined effects of saline solution and moist concrete on long-term durability of GFRP reinforcing bars [111].

Tassew and Lubell reported the mechanical properties of glass fibre reinforced ceramic concrete [112]. Bathia et al. have given valuable results of sustainable fiber reinforced concrete for repair applications [113]. Pastor et al. searched for glass reinforced concrete panels containing recycled tyres: evaluation of the acoustic properties for their use as sound barriers [114]. Criado et al. carried out a work on the effect of recycled glass fiber on the corrosion behavior of reinforced mortar [115]. Bhoopathi et al. examined the fabrication and property evaluation of banana-hemp-glass fiber reinforced composites [116]. Wang et al. have given their experimental results on the flexural properties of epoxy syntactic foams reinforced by fiberglass mesh and/or short glass fiber [117]. Nigro et al. presented guidelines for flexural resistance of FRP reinforced concrete slabs and beams in fire [118]. García et al. worked on mechanical recycling of GFRP waste as short-fiber reinforcement in microconcrete [119].

Henriksen et al. made an innovative approach to manufacture thin-walled glass fibre reinforced concrete for tomorrow's architectural buildings envelopes with complex geometries [120]. Maranan

et al. evaluated the flexural strength and serviceability of geopolymer concrete beams reinforced with glass-fibre-reinforced polymer (GFRP) bars [121]. Pehlivanlı et al. studied the mechanical and microstructural features of autoclaved aerated concrete reinforced with autoclaved polypropylene, carbon, basalt and glass fiber [122]. Ge et al. conducted a research on glass fiber reinforced asphalt membrane for interlayer bonding between asphalt overlay and concrete pavement [123]. Jarek and Kubik made an examination on the glass fiber reinforced polymer composite rods in terms of the application for concrete reinforcement [124]. Schmitt et al. searched for thermo-mechanical loading of GFRP reinforced thin concrete panels [125]. Miotto and Dias discussed the structural efficiency of full-scale timber-concrete composite beams strengthened with fiberglass reinforced polymer [126]. Kushartomoa et al. examined the mechanical behavior of reactive powder concrete with glass powder substitute [127]. Garcia-Espinel et al. made a publication on the effects of sea water environment on glass fiber reinforced plastic materials used for marine civil engineering constructions [128]. Ferreira et al. searched for shear strain influence in the service response of FRP reinforced concrete beams [129]. Pagliolico et al. made a preliminary study on light transmittance properties of translucent concrete panels with coarse waste glass inclusions [130]. Neagoe et al. made an experimental study of GFRP-concrete hybrid beams with low degree of shear connection [131]. Das et al. gave a report on the flexural fracture response of a novel iron carbonate matrix-glass fibre composite and its comparison to Portland cement-based composites [132]. Kizilkanat et al. conducted an experimental study on the mechanical properties and fracture behavior of basalt and glass fibre reinforced concrete [133].

Mastali et al. finished a study on the impact resistance and mechanical properties of reinforced self-compacting concrete with recycled glass fibre reinforced polymers [134]. Henriksen et al. showed a new method to advance complex geometry thin-walled glass fibre reinforced concrete element [135]. Man et al. exhibited the expansion behavior of self-stressing concrete confined by glass-fiber composite meshes [136]. Khan and Ali used the glass and nylon fibers in concrete for controlling early age micro cracking in bridge decks [137]. Arslan investigated the effects of basalt and glass chopped fibers addition on fracture energy and mechanical properties of ordinary concrete [138]. Zhao et al. searched for the effect of fiber types on creep behavior of concrete [139]. Rudnov et al. wrote a paper on the properties and design characteristics of the fiber concrete [140]. Wroblewski et al. outlined the durability of bond between concrete beams and FRP composites made of flax and glass fibers [141]. Vaitkevičius et al. studied advanced mechanical properties and frost damage resistance of ultra-high performance fibre reinforced concrete [142]. Aliabdo et al. tried to utilize the waste glass powder in the production of cement and concrete [143]. El-Nemr et al. carried out a research on bond-dependent coefficient of glass- and carbon-FRP bars in normal- and high-strength concretes [144]. Bouziadi et al. published a paper on the effects of fibres on the shrinkage of high-strength concrete under various curing temperatures [145]. Yan and Lin examined bond behavior of GFRP bar-concrete interface and gave damage evolution assessment and FE simulation implementations [146]. Gao et al. have given knowledge about the behavior of glass and carbon FRP tube encased recycled aggregate concrete with recycled clay brick aggregate [147]. Ateş searched for mechanical properties of sandy soils reinforced with cement and randomly distributed glass fibers (GRC) [148]. Yan et al. made a review on bond mechanism and bond strength of GFRP bars to concrete [149]. Huo et al. made an experimental study on dynamic behavior GFRP-to-concrete interface [150]. Fursa et al. used the electric response to mechanical impact for evaluating the durability of the GFRP-concrete bond during the freeze-thaw process [151]. Wu et al. searched for improved bond behavior between GFRP rebar and concrete using calcium sulfoaluminate [152]. Nobili published a paper on the durability assessment of impregnated glass fabric reinforced cementitious matrix (GFRCM) composites in the alkaline and saline environment [153]. Yan and Lin established a new strategy for anchorage reliability assessment of GFRP bars to concrete using hybrid artificial neural network with genetic algorithm [154].

Dehghan et al. studied recycled glass fibre reinforced polymer additions to Portland cement concrete [155]. Alberti et al. carried out a work on fibre reinforced concrete with a combination of polyolefin and steel-hooked fibre [156]. Amin et al. made materials characterisation of macro synthetic fibre reinforced concrete [157]. Dal Lago et al. conducted full-scale testing and numerical analysis of a precast fibre reinforced self-compacting concrete slab pre-stressed with basalt fibre reinforced polymer bars [158]. Hamad aimed to find the size and shape effect of specimen on the compressive strength of HPLWFC reinforced with glass fibres [159].

Ahmad et al. reported an experimental study on the properties of normal concrete, self-compacting concrete and glass fibre-reinforced self-compacting concrete [160]. Panda et al. examined anisotropic mechanical performance of 3D printed fibre reinforced sustainable construction material [161]. Kodur and Bhatt made an numerical approach for modeling response of fibre reinforced polymer strengthened concrete slabs exposed to fire [162]. Lee et al. examined the flexural capacity of fibre reinforced concrete with a consideration of concrete strength and fiber content [163]. Sivakumar et al. conducted an experimental study on combined effects of glass fibre and metakaolin on the rheological, mechanical and durability properties of self-compacting concrete [164]. Sathanandam et al. searched for low carbon building: experimental insight on the use of fly ash and glass fibre for making geopolymer concrete [165]. Fathi et al. published a paper on the simultaneous effect of fiber and glass on the mechanical properties of self-compacting concrete [166]. Zia and Ali studied the behavior of fibre reinforced concrete for controlling the rate of cracking in canal-lining [167]. Xiaochun et al. concentrated themselves on the corrosion mechanism and performance analysis for the applicability of alkaline-resistant glass fibre in cement mortar of road pavement [168]. Mohajerani et al. made a review on practical recycling applications of crushed waste glass in construction materials [169]. Enfedaque et al. have given numerical simulation of the fracture behaviour of glass fiber reinforced cement [170]. Barris et al. carried out an experimental study on crack width and crack spacing glass-FRP reinforced concrete beams [171]. Pakravan et al. published a review paper on hybrid short fibre reinforcement system in concrete [172]. Yan et al. reported an experimental study on bond durability of glass fiber reinforced polymer bars in concrete exposed to harsh environmental agents: freeze-thaw cycles alkaline-saline solution [173]. Leone et al. investigated tensile properties and bond performance on masonry substrate for glass fabric reinforced cementitious matrix [174]. Gemi et al. made an experimental study on compressive behavior and failure analysis of composite concrete confined by glass/epoxy $\pm 55^\circ$ filament wound pipes [175]. Valvona et al. examined effective seismic strengthening and monitoring of a masonry vault by using glass fibre reinforced cementitious matrix with embedded fiber Bragg grating sensors [176]. Krayushkina et al. made an investigation of fiber concrete for road and bridge building [177]. Benmokrane et al. have given a laboratory assessment and durability performance of vinyl-ester, polyester, and epoxy glass-FRP bars for concrete structures [178]. Hambach and Volkmer reported the properties of 3D-printed fiber-reinforced Portland cement paste [179]. Riad et al. have indicated the effect of discrete glass fibers on the behavior of R.C. beams exposed to fire [180]. Youssef and Hadi dealt with axial load-bending moment diagrams of GFRP reinforced columns and GFRP encased square columns [181]. Bazli et al. conducted experiments and studied probabilistic models of bond strength between GFRP bar and different types of concrete under aggressive environments [182].

García et al. searched for the fabrication, optimization and durability evaluation of self cleaning and depolluting glass reinforced concrete panels [183]. Guo et al. studied on reduced alkali-silica reaction damage in recycled glass mortar samples with supplementary cementitious materials [184].

8. Conclusions

GFRC is one of the most versatile building materials available to architects and engineers. It has contributed significantly to the economics, technology and aesthetics of the construction industry. In line with this importance, a comprehensive review that was investigated widespread methods of production of GFRC and compatibility of developing technology was hereby aimed in understanding on the mechanical and physical properties of GFRC.

In general, the addition of glass fibre results in a higher compressive strength, but excessive amount of fibre causes a reduction in the strength due to reduced workability. There is no significant improvement in the modulus of elasticity of the concrete with the addition of fibres a low volume fraction. Glass fibres have positive effect on stress–strain curve of GFRC and flexural strength, because of the increase in the aspect ratio of fibres resulting in an increase pull-out and energy absorption of the GFRC.

Generally, GFRC's service life is higher than traditional concrete due to controlling of micro cracks propagation, corrosion (especially AR–glass fibre) and less permeability. GFRC is lightweight and is about 50–70 % lighter than traditional concrete. However, it is difficult to self–mix (requirement of special material). Its cost is higher than that of traditional concrete due to the fiberglass, addition of additives and acrylic co–polymer, but developing technology can substantially change this comparison.

GFRC is widely and reliably used in architecture, building, engineering applications. Moreover, complex forms, decorative materials and a whole building can be produced with the aid of digital technologies. GFRC is also a very important resource which includes self–cleaning environmental friendly panels, easily dyeable surfaces, and high performance concrete applications. Consequently, there is lots of GFRC applications in practice, but with very little research to support it. In response to this expanding use requirement in practice, advanced GFRC research can be performed so as to improve its properties further.

References

- [1] “GRC for Architects and Engineers, GRC in Action UK”, GRCA International, 2003.
- [2] Masuelli, M. A., “Fiber Reinforced Polymers–The Technology Applied for Concrete Repair”, Open Access E–Book, 2013.
- [3] Faheem, A. G., “Comparison of Plain-Concrete and Glass–Fiber–Reinforced–Concrete Beams with Different Flexural and Shear Reinforcement”, Department of Civil Engineering Capital University of Science & Technology, Islamabad, Pakistan, Master Thesis, April 2017.
- [4] Afrouhsabet, V., Biolzi L., Özbakkaloğlu, T., “High–Performance Fiber–Reinforced Concrete: A Review”, *J. Mater. Sci.*, 2016, 51: 6517–6551.
- [5] <https://www.grca.org.uk/about-grca.php> (Access Date: 06.11.2017).
- [6] http://www.grcuk.com/grc_history.htm (Access Date: 06.11.2017).
- [7] Masood, U., “Studies on Characteristics of Mixed Fiber Reinforced Concrete for Structural Applications”, Jawaharlal Nehru Technological University, Hyderabad, PhD Thesis, 2014.
- [8] Ferreira, J. P. J. G., Branco, F. A. B., “The Use of Glass Fiber–Reinforced Concrete as a Structural Material”, *Experimental Techniques*, May–June, 2007, pp. 64–73.
- [9] Bartos, P. J. M., “Review on the Performance of Glass Fiber Reinforced Concrete”, *IOP Conf. Series: Materials Science and Engineering*, Scotland, 2017, 246.
- [10] <https://www.youtube.com/watch?v=Gtmd13aS94A> (Access Date: 13.11.2017).

- [11] Girard, J., "Introduction to GFRC (Glass Fiber Reinforced Concrete)", The Concrete Countertop Institute, 2008.
- [12] <https://www.youtube.com/watch?v=IdEkP6-WQYs> (Access Date: 13.11.2017).
- [13] Bentur, A., Mindess. S., "Fiber Reinforced Cementitious Composites", Second Edition, Taylor and Francis Group, London and New York, 2007.
- [14] Mindess, S., Young, J. F., Darwin, D., "Concrete", Second Edition, Prentice Hall, Upper Saddle River, NJ, 2002.
- [15] Zollo, R. F., "Fiber-Reinforced Concrete: An Overview after 30 Years of Development", Cement and Concrete Composites, 1997, 19(2): 107–122.
- [16] "Design, Manufacture and Installation of Glass Reinforced Concrete (GRC)", GRC Industry Group of National Precast Concrete Association, Australia, October 2006, pp. 29–32.
- [17] Tabalvandani, M. S., Biria, H. A., Siaestalkh, P. K., "Glass Fiber Reinforced Concrete Exclusive Assets and Applications in Construction", Digital Library University of Moratuwa, Sri Lanka, <http://dl.lib.mrt.ac.lk/handle/123/9497>, 2013 (Access Date: 23.11.2017).
- [18] Stahli, P., Custer, R., Van Mier, J. G. M., "On Flow Properties, Fiber Distribution, Fiber Orientation and Flexural Behaviour of FRC", Materials and Structures, 2008, 41: 189–196.
- [19] Kang, S. T., Lee, B. Y., Kim, J. K., Kim, Y. Y., "The Effect of Fiber Distribution Characteristics on the Flexural Strength of Steel Fiber-Reinforced Ultra High Strength Concrete", Construction and Building Materials, 2011, 25: 2450–2457.
- [20] Grünewald, S., "Fiber Reinforcement and the Rheology of Concrete", A Volume in Woodhead Publishing Series in Civil and Structural Engineering, The Netherlands, 2012, pp. 229–256.
- [21] <http://selectsurfacesoln.com/concrete-countertops-gfrc-in-orlando/> (Access Date: 22.11.2017).
- [22] <https://www.concretedecor.net/decorativeconcretearticles/vol-15-no-1-january-2015/warping-glass-fiber-reinforced-concrete/>(Access Date: 22.11.2017).
- [23] Retnakar, A., Aswin, S., Hussain, S. S. K., Shilpa, T. S., Varun, V., Kumar, M. D. S. "Performance Evaluation of Glass Fiber Reinforced Concrete", IRJET, March 2017, 04 (03): 950–954.
- [24] Alam, Md. A., Ahmad, I., Rahman, F., "Experimental Study on Properties of Glass Fiber Reinforced Concrete", IJETT, June 2015, 24 (06): 297–301.
- [25] Beigia, M. H., Berenjiana, J., Omrana, O. L., Nik, A. S., Nikbin, I. M., "An Experimental Survey on Combined Effects of Fibers and Nanosilica on the Mechanical, Rheological, and Durability Properties of Self-Compacting Concrete", Materials & Design, September 2013, 50: 1019–1029.
- [26] Kim, G. B., Pilakoutas, K., Waldron, P., "Finite Element Analysis of Thin GFRC Panels Reinforced with FRP", Construction and Building Materials, 2009, 23: 930–942.
- [27] Prasanti, B., Vidya, Sagar, Lal, V., "Study on Mechanical Properties and Stress Strain Behaviour of Glass Fiber Reinforced Concrete (GFRC)", IJRAT, June 2017, 5 (06): 23–29.
- [28] Prasad, M. L. V., Kumar P, R., Toshiyuki, O., "Development of Analytical Stress-Strain Model for Glass Fiber Reinforced Self Compacting Concrete", International Journal of Mechanics and Solids, 2009, 4(1): 25–37.
- [29] Kene, K. S., Vairagade, V. S., Sathawane, S., "Experimental Study on Behavior of Steel and Glass Fiber Reinforced Concrete Composites", Bonfring International Journal of Industrial Engineering and Management Science, December 2012, 2 (04): 125–130.
- [30] Löber, P., Holschemacher, K., "Structural Glass Fiber Reinforced Concrete for Slabs on Ground", World Journal of Engineering and Technology, September 2014, 2: 48–54.

- [31] Kiran, S. T., Srinivasa, R. K., “Comparison of Compressive and Flexural Strength of Glass Fiber Reinforced Concrete with Conventional Concrete”, *International Journal of Applied Engineering Research*, 2016, 11(6): 4304–4308.
- [32] Kwon, S. H., Shah, S. P., “Prediction of Early–Age Cracking of Fiber–Reinforced Concrete due to Restrained Shrinkage”, *ACI Materials Journal*, July–August 2008, pp. 381–389.
- [33] Theodorakopoulos, D. D., “Shrinkage Behaviour of GRC Thin Sheets”, *Cement and Concrete Composites*, 1995, 17: 229–238.
- [34] Mirza, F. A., Soroushian, P., “Effects of Alkali–Resistant Glass Fiber Reinforcement on Crack and Temperature Resistance of Lightweight Concrete”, *Cement & Concrete Composites*, 2002, 24: 223–227.
- [35] Scheffler, C., Zhandarov, S., Mader, E., “Alkali Resistant Glass Fiber Reinforced Concrete: Pull–Out Investigation of Interphase Behavior Under Quasi–Static and High Rate Loading”, *Cement and Concrete Composites*, 2017, 84: 19–27.
- [36] Ranaivomanana, N., Multon, S., Turatsinze, A., “Basic Creep of Concrete under Compression, Tension and Bending”, *Construction and Building Materials*, 2013, 38: 173–180.
- [37] Kharitonov, A., Ryabova, A., Pukharenkoa, Y., “Modified GFRC for Durable Underground Construction”, *Procedia Engineering*, 2016, 165: 1152–1161.
- [38] Ait–Mokhtar, A., Belarbi, R., Benboudjema, F., Burlion, N., Capra, B., Carcasses, M., Colliat, J. B., Cussigh, F., Deby, F., Jacquemot, F., De Larrard, T., Lataste, J. F., Le Bescop, P., Pierre, M., Poyet, S., Rougeau, P., Rougelot, T., Sellier, A., Se’mé’nadisse, J., Torrenti, J. M., Trabelsi, A., Turcry, P., Yanez–Godoy, H., “Experimental Investigation of the variability of concrete durability properties”, *Cement and Concrete Research*, 2013, 45: 21–36.
- [39] Torres–Luque, M., Bastidas–Arteaga, E., Schoefs, F., Sa’nchez–Silva, M., Osma, J. F., “Non–Destructive Methods for Measuring Chloride Ingress into Concrete: State–of–the–Art and Future Challenges”, *Construction and Building Materials*, 2014, 68: 68–81.
- [40] Basheer, P. A. M., Gilleece, P. R. V., Long, A. E., Mc Carter, W. J., “Monitoring Electrical Resistance of Concretes Containing Alternative Cementitious Materials to Assess Their Resistance to Chloride Penetration”, *Cement & Concrete Composites*, 2002, 24(5): 437–449.
- [41] Chandramouli, K., Srinivasa, Rao, P., Seshadri, Sekhar, T., Pannirselvam, N., Sravana, P., “Rapid Chloride Permeability Test for Durability Studies on Glass Fiber Reinforced Concrete”, *ARPN Journal of Engineering and Applied Sciences*, March 2010, 5(03): 67–71.
- [42] <https://eduardodseng.wordpress.com/2013/12/03/corrosion-of-steel-in-concrete/> (Access Date: 27.12.2017).
- [43] <https://yandex.com.tr/gorsel/search?p=1&text=concrete%20spalling&noreask=1&lr=103835>. (Access Date: 27.12.2017).
- [44] Söylev, T. A., Özturan, T., “Durability, Physical and Mechanical Properties of Fiber–Reinforced Concretes at Low–Volume Fraction”, *Construction and Building Materials*, December 2014, 73: 67–75.
- [45] Banthia, N., Bindiganavile, V., Jones, V., Novak, J., “Fiber–Reinforced Concrete in Precast Concrete Applications: Research Leads to Innovative Products”, *PCI Journal*, 2012, pp. 33–46.
- [46] Işıkcı, C., “Heat Insulated Fabrication GRC Panel”, 17th International Congress of the GRCA, Radison Blu, Dubai, 2015.
- [47] Song, D., “Hainan International Expo Non–Linear Roofing; Application of Waterproofing, Insulation and GRC System”, 17th International Congress of the GRCA, Radison Blu, Dubai, 2015.
- [48] Faigen, P., “The Igneous House”, 17th International Congress of the GRCA, Radison Blu, Dubai, 2015.

- [49] Dong, Z., “Application of GRC Permanent Formwork”, 17th International Congress of the GRCA, Radison Blu, Dubai, 2015.
- [50] Raun, C., Kirkegaard, P. H., “Adaptive Mould—A Cost—Effective Mould System Linking Design and Manufacturing of Double—Curved GFRC Panels”, 17th International Congress of the GRCA, Radison Blu, Dubai, 2015.
- [51] Ma, Y., Che, Y., “A Brief Introduction to 3D Printing Technology”, 17th International Congress of the GRCA, Radison Blu, Dubai, 2015.
- [52] Wayser, B., Ringot, E., “Coloured Surface Protection: An Alternative to Mass Colouring and an Opportunity to Meet Architectural Expectations”, 17th International Congress of the GRCA, Radison Blu, Dubai, 2015.
- [53] Delibaş, T., Maraşlı, M., “Self—Cleaning and Air Purifying Cement Based GRC Panels Used in Tüpraş Rub Project”, 17th International Congress of the GRCA, Radison Blu, Dubai, 2015.
- [54] Lavery, R., White, I. G., Peter, I. D., “Developing a HP (High Performance) GRC Formulation”, 17th International Congress of the GRCA”, Radison Blu, Dubai, 2015.
- [55] Perez, F., Bernardi, S., Trucy, L., Ferreira, L., “New UHPC for the Realization of Complex Elements”, 17th International Congress of the GRCA, Radison Blu, Dubai, 2015.
- [56] Karasu, B., Günkaya, G., “Use of Glass in Concrete Reinforcement”, *Journal of Ceramic Art, Science and Technology*, Turkish Ceramic Society, 2001, 17, 16–18 (in Turkish).
- [57] Tuncan, M., Karasu, B. and Yalçın, M., “The Suitability for Using Glass and Fly Ash in Portland Cement Concrete”, *Proceedings of the 11th International Society of Offshore and Polar Engineers (ISOPE) Congress*, Stavenger Norway, 2001, Vol. 4, 146–152.
- [58] Karasu, B., Arslan, G., Günkaya, G. and Turan, S., “Chemical Durability Behavior of Bulk Glasses in the SrO—Mn₂O₃—Fe₂O₃—MgO—ZrO₂—SiO₂ (SMFMZS) System”, *Key Engineering Materials*, 2002, Vols. 206–213, 2105–2108.
- [59] Karasu, B., Arslan, G. and Kaya, G., “Chemical Durability of SrO—Mn₂O₃—Fe₂O₃—MgO—ZrO₂—SiO₂ (SMFMZS) System Frits against Alkali Attack”, *Glass Technology*, 2002, 43C, 104–106.
- [60] Tuncan, M., Karasu, B., Yalcin, M., Tuncan, A., “The Effects of Filler Glasses on Mechanical Properties of Concrete”, *Euro Ceramics VIII*, *Key Engineering Materials*, 2004, Vols. 264–68, 2169–2172.
- [61] Arslan, G., Karasu, B., Dölekçekiç, E., Kaya, G., ve Günkaya, G., “Chemical Dissolution Mechanism of the SrO—MgO—ZrO₂—SiO₂ (SMZS) System Glasses”, *Proceeding Books of the IV. Ceramic, Glass, Enamel, Glaze and Pigment Seminar with International Participation (SERES 2007)*, 2007, 1109–1110, Eskişehir (in Turkish).
- [62] Arslan, G., Karasu, B., Dolekcekic, E., Kaya, G. and Gunkaya, G., “Effect of Transition Metal Oxide Additions on the Chemical Durability of SrO—MgO—ZrO₂ SiO₂ Glasses”, *Glass Technology: The European Journal of Glass Science & Technology Part A*, 2009, Vol. 50, No. 1, 17–24.
- [63] Kılınç, K., Yurdakul, Topkaya, A., Tuncan, M., Karasu, B., Kavas, T., “SrO—Mn₂O₃—Fe₂O₃—MgO—ZrO₂—SiO₂ (SMFMZS) System Glasses in Portland Cement Concrete”, *Abstract Book of SERES’11 II. International, Ceramic, Glass, Porcelain Enamel, Glaze and Pigment Congress*, 2011, Eskişehir, Türkiye.
- [64] Yurdakul, A., Gunkaya, G., Dolekcekic, E. and Karasu, B., “Investigations on the Alkali Durability of the SMFMZS (SrO—Mn₂O₃—Fe₂O₃—MgO—ZrO₂—SiO₂) System Glass Fibers”, *20th National Electron Microscopy Congress with International Participation Abstract Book*, 2011, 127–128, Kemer, Antalya (in Turkish).
- [65] Yurdakul, A., Dölekcekic, E., Karasu, B., Günkaya, G., “Characterization of Commercially Available Alkali Resistant Glass Fiber for Concrete Reinforcement and Chemical Durability

- Comparison with SrO–Mn₂O₃–Fe₂O₃–MgO–ZrO₂–SiO₂ (SMFMZS) System Glasses”, Anadolu University, Journal of Science and Technology A, Applied Sciences and Engineering, 2012, Vol. 13, No: 2, 95–102.
- [66] Yurdakul, A., Yurdakul, H., Gunkaya, G., Kavas, T., Dölekçecic, E. and Karasu, B., “Electron Microscopy Observations on the Microstructural Evolution of Glass Fiber Reinforced Concrete (GFRC) Materials”, The European Microscopy Society, the Proceedings of the 15th European Microscopy Congress (EMC2012), 2012, Manchester, England.
- [67] Yurdakul, A., Gunkaya, G., Kavas, T., Dölekçecic, E. and Karasu, B., “Electron Microscopy Observations on Glass Fiber Reinforced Concrete (GFRC) Materials”, Afyon Kocatepe University, Journal of Science and Engineering, Special Issue, 2014, Vol. 14, 185–191.
- [68] Karasu, B., Yurdakul, T. A., Dölekçekiç, E., Günkaya, G., Kavas, T., “Use of the SMFMZS (SrO–Mn₂O₃–Fe₂O₃–MgO–ZrO₂–SiO₂) system Glass Fibres in Concrete Reinforcement”, Anadolu University, Scientific Research Project, Head of the Project, 1003F107, 2013 Eskişehir, Türkiye (in Turkish).
- [69] Günkaya, G., Yurdakul, A., Kavas, T., Dölekçekiç, E., Karasu, B., “Novel Glass Compositions for Concrete Reinforcement”, Abstract Book of International Union of Materials Research Societies–International Conference in Asia (IUMRS–ICA 2013), 2013, Mumbai, India.
- [70] Yurdakul, A., Gunkaya, G., Kavas, T., Dölekçecic, E. and Karasu, B., “Investigation on Fiber Production Attempts from the Borosilicate and SMFMZS (SrO–MgO–Fe₂O₃–Mn₂O₃–ZrO₂–SiO₂) Glass System”, Afyon Kocatepe University, Journal of Science and Engineering, Special Issue, 2014, Vol. 14, 1–9.
- [71] Yurdakul, A., Günkaya, G., Kavas, T., Dölekçekiç, E., Karasu, B., “Mechanical Properties–Microstructure Relationship in High Alkali Resistant SMZS (SrO–MgO–ZrO₂–SiO₂) System Glass Fiber Reinforced Concrete”, Abstract Book of 12th ESG Conference, 2014, Parma, Italy.
- [72] Yurdakul, A., Günkaya, G., Dölekçekiç, E., Kavas, T., Karasu, B., “Effect of Waste Glass Addition to SrO–Mn₂O₃–Fe₂O₃–MgO–ZrO₂–SiO₂ (SMFMZS) Glasses”, the Proceedings of SERES’14 III. International, Ceramic, Glass, Porcelain Enamel, Glaze and Pigment Congress, Eskişehir, October 2014.
- [73] Yurdakul, A., Günkaya, G., Dölekçekiç, E., Kavas, T., Karasu, B., “Novel Glass Compositions for Fiber Drawing”, Ceramic International, Vol. 41, Issue 10, Part A, 13105–13114, 2015.
- [74] Yurdakul, A., Günkaya, G., Dölekçekiç, E., Kavas, T., Karasu, B., “Some Chemical and Mechanical Properties of SMZS (SrO–MgO–ZrO₂–SiO₂) and SMFMZS (SrO–Mn₂O₃–Fe₂O₃–MgO–ZrO₂–SiO₂) System Glass Fibres Reinforced Concrete (GFRC) Materials”, 9. Ceramic Congress, 2015, Afyonkarahisar, Türkiye.
- [75] Yurdakul, A., Günkaya, G., Dölekçekiç, E., Kavas, T., Karasu, B., “Mechanical Properties of SMFMZS (SrO–Mn₂O₃–Fe₂O₃–MgO–ZrO₂–SiO₂) System Glass Fibre Reinforced Concrete (GFRC) Materials”, Abstract Book of International Conference on Traditional and Advanced Ceramics 2015 (ICTA2015) in conjunction with ASEAN Ceramics 2015, CI–06, p. 20, Bangkok, Thailand.
- [76] Yurdakul, A., Günkaya, G., Dölekçekiç, E., Kavas, T., Karasu, B., “Investigations on Reinforcing Concrete (GFRC) Materials with SMFMZS (SrO–Mn₂O₃–Fe₂O₃–MgO–ZrO₂–SiO₂) System Glass Fibres”, Abstract Book of 2017 ICG Annual Meeting & 32nd Şişecam Glass Symposium, 2017, 114–116, İstanbul, Türkiye.
- [77] Yurdakul, A., Dolekçecic, E., Gunkaya, G., Kavas, T., Karasu, B., “Usage of High Alkali Resistance SrO–Mn₂O₃–Fe₂O₃–MgO–ZrO₂–SiO₂ (SMFMZS) System Glass Fibers in Cement Structure and Their Characterization”, Construction & Building Materials, 2018 (in print).

- [78] Reis, J. M. L., and Ferreira, A. J. M., "Assessment of Fracture Properties of Epoxy Polymer Concrete Reinforced with Short Carbon and Glass Fibre", *Construction & Building Materials* 18, 2004, 523–528.
- [79] Reis, J. M. L., and Ferreira, A. J. M., "Freeze–Thaw and Thermal Degredation Influence on the Fracture Properties of Carbon and Glass Fibre Reinforced Polymer Concrete", *Construction & Building Materials* 20, 2006, 888–892.
- [80] Purnell, P., Beddows, J., "Durability and Simulated Ageing of New Matrix Glass Fibre Reinforced Concrete", *Cement and Concrete Composites* 27, 2005, 875–884.
- [81] Avci, A., Akdemir, A., Arikan, H., "Mixed–Mode Fracture Behaviour of Glass Fibre Reinforced Polymer Concrete", *Cement and Concrete Research* 25, 2005, 243–247.
- [82] Abbasi, A., Hogg, P. J., "Temperature and Environmental Effect on Glass Fibre Rebar: Modulus Strenght and Interfacial Bond Strenght with Concrete", *Composites: Part B* 36, 2005, 394–404.
- [83] Abbasi, A., Hogg, P. J., "A Model for Predicting the Properties of the Constituents of a Glass Fibre Rebar Reinforced Concrete Beam at Elevated Temperature Simulating a Fire Test", *Composites: Part B* 36, 2005, 384–393.
- [84] El-Ragaby, A., El-Salakawy, E., Benmokrane, B., "Fatigue Analysis of Concrete Bridge Desk Slabs Reinforced with E-Glass/Vinyl Ester FRP Reinforcing Bar", *Composites: Part B* 38, 2007, 703–711.
- [85] Razaqpure, A. G., Tolba, A., Contestabile, E., "Blast Loading Response of Reinforced Concrete Panels Reinforced with Externally Bonded GFRP Laminates", *Composites: Part B* 38, 2007, 535–546.
- [86] Lee, J. –Y., Kim, T. –Y., Kim, T. –J., Yi, C. –K., Park, J. –S., You, Y. –C., Park, Y. –H., "Interfacial Bond Strenght of Glass Fibre Reinforced Polymer Bars in High–Strenght Concrete", *Composites: Part B* 39, 2008, 258–270.
- [87] Tang, W. C., Lo, T. Y., Balendran, R. V., "Bond Performance of Polystyrene Aggregate Concrete (PAC) Reinforced with Glass Fibre–Reinforced Polymer (GFRP) Bars", *Building and Environment* 43, 2008, 98–107.
- [88] Asokan, P., Osmani, M., Price, A. D. F., "Assessing the Recycling Potential of Glass Fibre Reinforced Plastic Waste in Concrete and Cement Composites", *Journal of Cleaner Production* 17, 2009, 821–829.
- [89] Scheffler, C., Gao, S. L., Plonka, R., Mäder, E., Hempel, S., Butler, M., Mechtcherine, V., "Interphase Modification of Alkali–Resistant Glass Fibres and Carbon Fibres for Textile Reinforced Concrete II: Fibre Properties and Durability", *Composite Science and Technology* 69, 2009, 531–538.
- [90] Scheffler, C., Gao, S. L., Plonka, R., Mäder, E., Hempel, S., Butler, M., Mechtcherine, V., "Interphase Modification of Alkali–Resistant Glass Fibres and Carbon Fibres for Textile Reinforced Concrete II: Water Absorption and Composite Interphases", *Composite Science and Technology* 69, 2009, 905–912.
- [91] Hao, Q., Wang, Y., He, Z., OU, J., "Bond Strenght of Glass Fiber Reinforced Polymer Ribbed Rebars in Normal Strenght Concrete", *Construction & Building Materials* 23, 2009, 865–871.
- [92] Asokan, P., Osmani, M., Price A. D. F., "Improvement of the Mechanical Properties of Glass Fibre Reinforced Plastic Waste Powder Filled Concrete", *Construction & Building Materials* 24, 2010, 448–460.
- [93] Abtahi, S. M., Sheikhzadeh, M., Hejazi, S. M., "Fibre–Reinforced Asphalt–Concrete: A Review", *Construction & Building Materials* 24, 2010, 871–877.
- [94] Soong, W. H., Raghavan, J., Rizkalla, S. H., "Fundamental Mechanisms of Bonding of Glass Fibre Reinforced Polymer Reinforcement to Concrete", *Construction & Building Materials* 25, 2011, 2813–2821.

- [95] Issa, M. S., Metwally, I. M., Elzeiny, S. M., "Influence of Fibres on Flexural Behavior and Ductility of Concrete Beams Reinforced with GFRP Rebars", *Engineering Structures* 33, 2011, 1754–1763.
- [96] Tysmans, T., Adriaenssens, S., Wastiels, J., "Form Finding Methodology for Forced-Modelled Anticlastic Shells in Glass Fibre Textile Reinforced Cement Composites", *Engineering Structures* 33, 2011, 2603–2611.
- [97] Enfedaque, A., Cendón, D., Gálvez, F., Sánchez-Gálvez, V., "Failure and Impact Behavior of Facade Panels Made of Glass Fibre Reinforced Cement (GRC)", *Engineering Failure Analysis* 18, 2011, 1652–1663.
- [98] Borhan, T. M., "Properties of Glass Concrete Reinforced with Short Basalt Fibre", *Materials and Design* 42, 2012, 265–271.
- [99] Choi, D.-U., Chun, S.-C., Ha, S.-S., "Bond Strength of Glass Fibre-Reinforced Polymer Bars in Unconfined Concrete", *Engineering Structures* 34, 2012, 303–313.
- [100] Barhum, R., Mechtcherine, V., "Effect of Short, Dispersed Glass and Carbon Fibres on the Behaviour of Textile-Reinforced Concrete under Tensile Loading", *Engineering Fracture Mechanics* 92, 2012, 56–71.
- [101] Emiroğlu, M., Beycioğlu, A., Yildiz, S., "ANFIS and Statistical Based Approach to Prediction the Peak Pressure Load of Concrete Pipes Including Glass Fiber", *Expert Systems with Applications* 39, 2012, 2877–2883.
- [102] Zheng, Y., Li, C., Yu, G., "Investigation of Structural Behaviours of Laterally Restrained GFRP Reinforced Concrete Slabs", *Composites Part B* 43, 2012, 1586–1597.
- [103] Limbachiya, M., Meddah, M. S., Fotiadou, S., "Performance of Granulated Foam Glass Concrete", *Construction and Building Materials* 28, 2012, 759–768.
- [104] Nunes, L. C. S., Reiss, J. M. L., "Estimation of Crack-Tip-Opening Displacement and Crack Extension of Glass Fiber Reinforced Polymer Mortars Using Digital Image Correlation Method", *Materials and Design* 33, 2012, 248–253.
- [105] Li, X., Lv, H., Zhou, S., "Flexural Behavior of GFRP-Reinforced Concrete Encased Steel Composite Beams", *Construction and Building Materials* 28, 2012, 255–262.
- [106] Sayyar, M., Soroushian, P., Sadiq, M. M., Balachandra, A., Lu, J., "Low-Cost Glass Fiber Composites with Enhanced Alkali Resistance Tailored towards Concrete Reinforcement", *Construction and Building Materials* 44, 2013, 458–463.
- [107] Job, S., "Recycling Glass Fibre Reinforced Composites—History and Progress", *REINFORCEDplastics*, September/October 2013, 19–23.
- [108] Saribiyik, M., Piskin, A., Saribiyik, A., "The Effect of Waste Glass Powder Usage on Polymer Concrete Properties", *Construction and Building Materials* 47, 2013, 840–844.
- [109] Shi-Cong, K., Chi-Sun, P., "A Novel Polymer Concrete Made with Recycled Glass Aggregates, Fly Ash and Metakaolin", *Construction and Building Materials* 41, 2013, 146–151.
- [110] Carvelli, V., Pisani, M. A., Poggi, C., "High Temperature Effects on Concrete Members Reinforced with GFRP Rebars", *Composites Part B* 54, 2013, 125–132.
- [111] Robert, M., Benmokrane, B., "Combined Effects of Saline Solution and Moist Concrete on Long-Term Durability of GFRP Reinforcing Bars", *Construction and Building Materials* 38, 2013, 274–284.
- [112] Tassew, S. T., Lubell, A. S., "Mechanical Properties of Glass Fibre Reinforced Ceramic Concrete", *Construction and Building Materials* 51, 2014, 215–224.
- [113] Bathia, N., Zanotti, C., Sappakittipakorn, M., "Sustainable Fiber Reinforced Concrete for Repair Applications", *Construction and Building Materials* 67, 2014, 405–412.
- [114] Pastor, J. M., García, L. D., Quintana, S., Peña, J., "Glass Reinforced Concrete Panels Containing Recycled Tyres: Evaluation of the Acoustic Properties of for Their Use as Sound Barriers", *Construction and Building Materials* 54, 2014, 541–549.

- [115] Criado, M., García-Díaz, I., Bastidas, J. M., Alguacil, F. C., López, F. A., Monticelli, C., “Effect of Recycled Glass Fiber on the Corrosion Behavior of Reinforced Mortar”, *Construction and Building Materials* 64, 2014, 261–269.
- [116] Bhoopathi, R., Ramesh, M., Deepa, C., “Fabrication and Property Evaluation of Banana–Hemp–Glass Fiber Reinforced Composites”, *Procedia Engineering* 97, 2014, 2032–2041.
- [117] Wang, L., Zhang, J., Yang, X., Zhang, C., Gong, W., Yu, J., “Flexural Properties of Epoxy Syntactic Foams Reinforced by Fiberglass Mesh and/or Short Glass Fiber”, *Materials and Design* 55, 2014, 929–936.
- [118] Nigro, E., Cefarelli, G., Bilotta, A., Manfredi, G., Cosenza, E., “Guidelines for Flexural Resistance of FRP Reinforced Concrete Slabs and Beams in Fire”, *Composites Part B* 58, 2014, 103–112.
- [119] García, D., Vegas, I., Cacho, I., “Mechanical Recycling of GFRP Waste as Short-Fiber Reinforcement in Microconcrete”, *Construction and Building Materials* 64, 2014, 293–300.
- [120] Henriksen, T., Lo, S., Knaack, U., “An Innovative Approach to Manufacture Thin-Walled Glass Fibre Reinforced Concrete for Tomorrow’s Architectural Buildings Envelopes with Complex Geometries”, *Journal of Building Engineering* 4, 2015, 189–199.
- [121] Maranan, G. B., Manalo, A. C., Benmokrane, B., Karunasena, W., Mendis, P., “Evaluation of the Flexural Strength and Serviceability of Geopolymer Concrete Beams Reinforced with Glass-Fibre-Reinforced Polymer (GFRP) Bars”, *Engineering Structures* 101, 2015, 529–541.
- [122] Pehlivanlı, Z. O., Uzun, I., Demir, I., “Mechanical and Microstructural Features of Autoclaved Aerated Concrete Reinforced with Autoclaved Polypropylene, Carbon, Basalt and Glass Fiber”, *Construction and Building Materials* 96, 2015, 428–433.
- [123] Ge, Z., Wang, H., Zhang, Q., Xiong, C., “Glass Fiber Reinforced Asphalt Membrane for Interlayer Bonding between Asphalt Overlay and Concrete Pavement”, *Construction and Building Materials* 101, 2015, 918–925.
- [124] Jarek, B., Kubik, A., “Examination of the Glass Fiber Reinforced Polymer Composite Rods in Terms of the Application for Concrete Reinforcement”, *Procedia Engineering* 108, 2015, 394–401.
- [125] Schmitt, A., Carvelli, V., Pahn, M., “Thermo-Mechanical Loading of GFRP Reinforced Thin Concrete Panels”, *Composites Part B* 81, 2015, 35–43.
- [126] Miotto, J. L., Dias, A. A., “Structural Efficiency of Full-Scale Timber–Concrete Composite Beams Strengthened with Fiberglass Reinforced Polymer”, *Composite Structures* 128, 2015, 145–154.
- [127] Kushartomoa, W., Bali, I., Sulaiman, B., “Mechanical Behavior of Reactive Powder Concrete with Glass Powder Substitute”, *Procedia Engineering* 125, 2015, 617–622.
- [128] Garcia-Espinel, J. D., Castro-Fresno, D., Gayo, P. P., Ballester-Muñoz, F., “Effects of Sea Water Environment on Glass Fiber Reinforced Plastic Materials Used for Marine Civil Engineering Constructions”, *Materials and Design* 66, 2015, 46–50.
- [129] Ferreira, D., Oller, E., Barris, C., Torres, L., “Shear Strain Influence in the Service Response of FRP Reinforced Concrete Beams”, *Composite Structures* 121, 2015, 142–153.
- [130] Pagliolico, S. I., Lo Verso, V. R. M., Torta, A., Giraud, M., Canonico, F., Ligi, L., “A Preliminary Study on Light Transmittance Properties of Translucent Concrete Panels with Coarse Waste Glass Inclusions”, *Energy Procedia* 78, 2015, 1811–1816.
- [131] Neagoe, C. A., Gil, L., Pérez, M. A., “Experimental Study of GFRP–Concrete Hybrid Beams with Low Degree of Shear Connection”, *Construction and Building Materials* 101, 2015, 141–151.
- [132] Das, S., Hendrix, A., Stone, D., Neithalath, N., “Flexural Fracture Response of a Novel Iron Carbonate Matrix–Glass Fibre Composite and Its Comparison to Portland Cement–Based Composites”, *Construction and Building Materials* 93, 2015, 360–370.

- [133] Kizilkanat, A. B., Kabay, N., Akyüncü, V., Chowdhury, S., Akça, A. H., “Experimental Study on the Mechanical Properties and Fracture Behavior of Basalt and Glass Fibre Reinforced Concrete: An Experimental Study”, *Construction and Building Materials* 100, 2015, 218–224.
- [134] Mastali, M., Dalvand, A., Sattarifard, A. R., “The Impact Resistance and Mechanical Properties of Reinforced Self-Compacting Concrete with Recycled Glass Fibre Reinforced Polymers”, *Journal of Cleaner Production* 124, 2016, 312–324.
- [135] Henriksen, T., Lo, S., Knaack, U., “A New Method to Advance Complex Geometry Thin-Walled Glass Fibre Reinforced Concrete Element”, *Journal of Building Engineering* 6, 2016, 243–251.
- [136] Man, T., Wang, B., Jin, H., Zhang, X., “Expansion Behavior of Self-Stressing Concrete Confined by Glass-Fiber Composite Meshes”, *Construction and Building Materials* 128, 2016, 38–46.
- [137] Khan, M., Ali, S., “Use of Glass and Nylon Fibers in Concrete for Controlling Early Age Micro Cracking in Bridge Decks”, *Construction and Building Materials* 125, 2016, 800–808.
- [138] Arslan, M. E., “Effects of Basalt and Glass Chopped Fibers Addition on Fracture Energy and Mechanical Properties of Ordinary Concrete: CMOD Measurement”, *Construction and Building Materials* 114, 2016, 383–391.
- [139] Zhao, Q., Yu, J., Geng, G., Jiang, J., Liu, X., “Effect of Fiber Types on Creep Behavior of Concrete”, *Construction and Building Materials* 105, 2016, 416–422.
- [140] Rudnov, V., Belyakov, V., Moskovsky, S., “Properties and Design Characteristics of the Fiber Concrete”, *Procedia Engineering*, 150, 2016, 1536–1540.
- [141] Wroblewski, L., Hristozov, D., Sadeghian, P., “Durability of Bond Between Concrete Beams and FRP Composites Made of Flax and Glass Fibers”, *Construction and Building Materials* 126, 2016, 800–811.
- [142] Vaitkevičius, V., Šerelis, E., Vaičiukyniene, D., Raudonis, V., Rudžionis, Ž., “Advanced Mechanical Properties and Frost Damage Resistance of Ultra-High Performance Fibre Reinforced Concrete”, *Construction and Building Materials* 126, 2016, 26–31.
- [143] Aliabdo, A. A., Elmoaty, A., E. M. A., Aboshama, A. Y., “Utilization of Waste Glass Powder in the Production of Cement and Concrete”, *Construction and Building Materials* 124, 2016, 866–877.
- [144] El-Nemr, A., Ahmed, E. A., Barris, C., Benmokrane, B., “Bond-Dependent Coefficient of Glass- and Carbon-FRP Bars in Normal- and High-Strength Concretes”, *Construction and Building Materials* 113, 2016, 77–89.
- [145] Bouziadi, F., Boulekbache, B., Hamrat, M., “The Effects of Fibres on the Shrinkage of High-Strength Concrete under Various Curing Temperatures”, *Construction and Building Materials* 114, 2016, 40–48.
- [146] Yan, F., Lin, Z., “Bond Behavior of GFRP Bar-Concrete Interface: Damage Evolution Assessment and FE Simulation Implementations”, *Composite Structures* 155, 2016, 63–76.
- [147] Gao, C., Huang, L., Yan, L., Kasal, B., Li, W., “Behavior of Glass and Carbon FRP Tube Encased Recycled Aggregate Concrete with Recycled Clay Brick Aggregate”, *Composite Structures* 155, 2016, 245–254.
- [148] Ateş, A., “Mechanical Properties of Sandy Soils Reinforced with Cement and Randomly Distributed Glass Fibers (GRC)”, *Composites Part B* 96, 2016, 295–304.
- [149] Yan, F., Lin, Z., Yang, M., “Bond Mechanism and Bond Strength of GFRP Bars to Concrete: A Review”, *Composites Part B* 98, 2016, 56–69.
- [150] Huo, J., Liu, J., Lu, Y., Yang, J., Xiao, Y., “Experimental Study on Dynamic Behavior GFRP-to-Concrete Interface”, *Engineering Structures* 118, 2016, 371–382.
- [151] Fursa, T. V., Utsyn, G. E., Korzenok, I. N., Petrov, M. V., Reutov, Y. A., “Using the Electric Response to Mechanical Impact for Evaluating the Durability of the GFRP-Concrete Bond during the Freeze-Thaw Process”, *Composites Part B* 90, 2016, 392–398.

- [152] Wu, C., Bai, Y., Kwon, S., “Improved Bond Behavior between GFRP Rebar and Concrete Using Calcium Sulfoaluminate”, *Construction and Building Materials* 113, 2016, 897–904.
- [153] Nobili, A., “Durability Assessment of Impregnated Glass Fabric Reinforced Cementitious Matrix (GFRCM) Composites in the Alkaline and Saline Environment”, *Construction and Building Materials* 105, 2016, 465–471.
- [154] Yan, F., Lin, Z., “New Strategy for Anchorage Reliability Assessment of GFRP Bars to Concrete Using Hybrid Artificial Neural Network with Genetic Algorithm”, *Composites Part B* 92, 2016, 420–433.
- [155] Dehghan, A., Peterson, K., Shvarzman, A., “Recycled Glass Fibre Reinforced Polymer Additions to Portland Cement Concrete”, *Construction and Building Materials* 146, 2017, 238–250.
- [156] Alberti, M. G., Enfedaque, A., Gálvez, J. C., “Fibre Reinforced Concrete with a Combination of Polyolefin and Steel–Hooked Fibre”, *Composite Structures* 171, 2017, 317–325.
- [157] Amin, A., Foster, S. J., Gibert, R. I., Kaufmann, W., “Materials Characterisation of Macro Synthetic Fibre Reinforced Concrete”, *Cement and Concrete Composites* 84, 2017, 124–133.
- [158] Dal Lago, B., Taylor, S. E., Deegan, P., Ferrara, L., Sonebi, M., Crosset, P., Pattarini, A., “Full–Scale Testing and Numerical Analysis of a Precast Fibre Reinforced Self–Compacting Concrete Slab Pre–Stressed with Basalt Fibre Reinforced Polymer Bars”, *Composites Part B* 128, 2017, 120–133.
- [159] Hamad, A. J., “Size and Shape Effect of Specimen on the Compressive Strength of HPLWFC Reinforced with Glass Fibres”, *Journal of King Saud University–Engineering Sciences* 2017, 29, 373–380.
- [160] Ahmad, S., Umar, A., Masood, A., “Properties of Normal Concrete, Self–Compacting Concrete and Glass Fibre–Reinforced Self–Compacting Concrete: An Experimental Study”, *Procedia Engineering* 173, 2017, 807–813.
- [161] Panda, B., Paul, S. C., Tan, M. J., “Anisotropic Mechanical Performance of 3D Printed Fibre Reinforced Sustainable Construction Material”, *Materials Letters* 209, 2017, 146–149.
- [162] Kodur, V. K. R., Bhatt, P. P., “A Numerical Approach for Modeling Response of Fibre Reinforced Polymer Strengthened Concrete Slabs Exposed to Fire”, *Composite Structures*, 2017, DOI: <https://doi.org/10.1016/j.compstruct.2017.12.051>.
- [163] Lee, J.–H., Cho, B., Choi, E., “Flexural Capacity of Fibre Reinforced Concrete with a Consideration of Concrete Strength and Fiber Content”, *Construction and Building Materials* 138, 2017, 222–231.
- [164] Sivakumar, V. R., Kavitha, O. R., Arulraj, G. P., Srisanthi, V. G., “An Experimental Study on Combined Effects of Glass Fibre and Metakaolin on the Rheological, Mechanical and Durability Properties of Self–Compacting Concrete”, *Applied Clay Science* 147, 2017, 123–127.
- [165] Sathanandam, T., Awoyera, P. O., Vijayan, V., Sathishkumar, K., “Low Carbon Building: Experimental Insight on the Use of Fly Ash and Glass Fibre for Making Geopolymer Concrete”, *Sustainable Environment Research* 27, 2017, 146–153.
- [166] Fathi, H., Lameie, T., Maleki, M., Yazdani, R., “Simultaneous Effect of Fiber and Glass on the Mechanical Properties of Self–Compacting Concrete”, *Construction and Building Materials* 133, 2017, 443–449.
- [167] Zia, A., Ali, M., “Behavior of Fibre Reinforced Concrete for Controlling the Rate of Cracking in Canal–Lining”, *Construction and Building Materials* 155, 2017, 726–739.
- [168] Xiaochun, Q., Xiaoming, Li, Xiaopei, C., “The Applicability of Alkaline-Resistant Glass Fibre in Cement Mortar of Road Pavement: Corrosion Mechanism and Performance Analysis”, *International Journal of Pavement Research and Technology* 10, 2017, 536–544.

- [169] Mohajerani, A., Vajna, J., Cheung, T. H. H., Kurmus, H., Arulrajah, A., Horpibulsuk, S., “Practical Recycling Applications of Crushed Waste Glass in Construction Materials: A Review”, *Construction and Building Materials* 156, 2017, 443–467.
- [170] Enfedaque, A., Alberti, M. G., Gálvez, J. C., Domingo, J., “Numerical Simulation of the Fracture Behaviour of Glass Fiber Reinforced Cement”, *Construction and Building Materials* 136, 2017, 108–117.
- [171] Barris, C., Torres, L., Vilanova, I., Miàs, C., Llorens, M., “Experimental Study on Crack Width and Crack Spacing Glass–FRP Reinforced Concrete Beams”, *Engineering Structures* 131, 2017, 231–242.
- [172] Pakravan, H. R., Latifi, M., Jamshidi, M., “Hybrid Short Fibre Reinforcement System in Concrete: A Review”, *Construction and Building Materials* 142, 2017, 280–294.
- [173] Yan, F., Lin, Z., Zhang, D., Gao, Z., Li, M., “Experimental Study on Bond Durability of Glass Fiber Reinforced Polymer Bars in Concrete Exposed to Harsh Environmental Agents: Freeze–Thaw Cycles Alkaline–Saline Solution”, *Composites Part B* 116, 2017, 406–421.
- [174] Leone, M., Aiello, M. A., Balsamo, A., Carozzi, F. G., Ceroni, F., Corradi, M., Gams, M., Garbin, E., Gattesco, N., Krajewski, P., Mazzotti, C., Oliveira, D., Papanicolaou, C., Ranocchiai, G., Roscini, F., Saenger, D., “Glass Fabric Reinforced Cementitious Matrix: Tensile Properties and Bond Performance on Masonry Substrate”, *Composites Part B* 127, 2017, 196–214.
- [175] Gemi, L., Köroğlu, M. A., Ashour, A., “Experimental Study on Compressive Behavior and Failure Analysis of Composite Concrete Confined by Glass/Epoxy $\pm 55^\circ$ Filament Wound Pipes”, *Composite Structures*, 2017, DOI: <https://doi.org/10.1016/j.compstruct.2017.12.049>.
- [176] Valvona, F., Toti, J., Gatulli, V., Potenza, F., “Effective Seismic Strengthening and Monitoring of a Masonry Vault by Using Glass Fibre Reinforced Cementitious Matrix with Embedded Fiber Bragg Grating Sensors”, *Composites Part B* 113, 2017, 355–370.
- [177] Krayushkina, K., Khymerik, T., Skrypchenko, O., Moshkovskiy, I., Pershakov, V., “Investigation of Fiber Concrete for Road and Bridge Building”, *Procedia Engineering* 187, 2017, 620–627.
- [178] Benmokrane, B., Ali, A. H., Mohamed, H. M., Elsafty, A., Manalo, A., “Laboratory Assessment and Durability Performance of Vinyl–Ester, Polyester, and Epoxy Glass–FRP Bars for Concrete Structures”, *Composites Part B* 114, 2017, 163–174.
- [179] Hambach, M., Volkmer, D., “Properties of 3D–Printed Fiber–Reinforced Portland Cement Paste”, *Cement and Concrete Composites* 79, 2017, 62–70.
- [180] Riad, M., Genidi, M. M., Shoeib, A., El-K., Abd Elnaby, S. F. M., “Effect of Discrete Glass Fibers on the Behavior of R.C. Beams Exposed to Fire”, *Housing and Building National Research Center (HBRC) Journal*, 2017, 13, 145–151.
- [181] Youssef, J., Hadi, M. N. S., “Axial Load–Bending Moment Diagrams of GFRP Reinforced Columns and GFRP Encased Square Columns”, *Construction and Building Materials* 135, 2017, 550–564.
- [182] Bazli, M., Ashrafi, H., Oskouei, A. V., “Experiments and Probabilistic Models of Bond Strength between GFRP Bar and Different Types of Concrete under Aggressive Environments”, *Construction and Building Materials* 148, 2017, 429–443.
- [183] Garcíá, L. D., Pastor, J. M., Peña, J., “Self Cleaning and Depolluting Glass Reinforced Concrete Panels: Fabrication, Optimization and Durability Evaluation”, *Construction and Building Materials* 162, 2018, 9–19.
- [184] Guo, S., Dai, Q., Sun, X., Xiao, X., Si, R., Wang, J., “Reduced Alkali–Silica Reaction Damage in Recycled Glass Mortar Samples with Supplementary Cementitious Materials”, *Journal of Cleaner Production* 172, 2018, 3621–3633.