



BULLETIN OF THE MINERAL RESEARCH AND EXPLORATION

<http://bulletin.mta.gov.tr>

BULLETIN OF THE MINERAL RESEARCH AND EXPLORATION	
CONTENTS	
OSTRACODS OF THE MEDITERRANEAN (THE GULF OF ANTALYA) AND THE AEGEAN SEA (AYVALIK AND KUŞADASI) AND THEIR BIOGEOGRAPHICAL DISTRIBUTIONS	Derya PARLAK ^a and Atike NAZİK ^{b*}
RESEARCH ARTICLE	

OSTRACODS OF THE MEDITERRANEAN (THE GULF OF ANTALYA) AND THE AEGEAN SEA (AYVALIK AND KUŞADASI) AND THEIR BIOGEOGRAPHICAL DISTRIBUTIONS

Derya PARLAK^a and Atike NAZİK^{b*}

^aÇukurova Univ., Fac. of Sci., Dept. of Geol. Eng., 01330, Sarıçam, Adana, TURKEY

^bÇukurova Univ., Fac. of Eng. and Arch., Dept. of Geol. Eng., 01330, Sarıçam, Adana, TURKEY

Research Article

Keywords:

Ostracod, Geological Time, Biogeography, Mediterranean, Aegean Sea.

ABSTRACT

The aim of this study is taxonomic investigation and environmental distribution of ostracoda association from the bottom sediments of the Mediterranean (The Gulf of Antalya) and Aegean Sea (Alibey and Maden islands/Ayvalık and Kuşadası) and identification of species surviving up to present. Twenty genera and 26 species are determined by examining the ostracoda contents of the 197 samples from the bottom sediments from 5 to 30 m depth in the Antalya Bay (Mediterranean). 24 genera and 34 species in 84 samples belonging to 4 cores around Alibey and Maden islands to the north of Ayvalık in Aegean Sea have been determined. Also, 23 genera and 29 species from the 45 samples at the depth of 8,5-22.3 m around Kuşadası have been determined. According to carapace morphology and depth of water, shallow marine group genera are belonging to subfamilies Trachyleberidae and Hemictheridae which have well-developed hinge, branching marginal-pore canals, clear eye-spots and more ornamentation, are relatively abundant specimens. The ostracoda association defined in this study is correlated with previous studies in Mediterranean, Aegean islands, Adriatic Sea, Algeria, Aegean and Marmara Sea of Turkey. The well-known ostracoda species such as *Aurila convexa*, *Jugosocythereis prava*, *Carinocythereis antiquata*, *Carinocythereis carinata*, *Costa batei*, *Semicytherura inversa*, *Loxococoncha rhomboidea*, *Sahnia fasciata*, *Cushmanidea elongata* from Atlantic and Mediterranean and *Neonesidea formosa*, *Trieblina raripila*, *Cytherella (Cytherelloidea) beckmanni*, *Cytherelloidea sordida*, *Aurila arborescens*, *Carinocythereis rhombica*, *Hiltermannicythere rubra*, *Hiltermannicythere turbida*, *Cytheretta adriatica*, *Cytheretta judaea*, *Callistocythere intricatoides*, *Urocythereis crenulosa*, *Acanthocythereis hystrix*, *Paracytheridea depressa*, *Xestoleberis communis*, *Xestoleberis dispar* and *Pontocypris acuminata* from in Mediterranean are wide-spread.

Received: 09.12.2015

Accepted: 18.01.2016

1. Introduction

The study area covers The Gulf of Antalya (Mediterranean) and Ayvalık-Kuşadası (Aegean Sea) regions (Figure 1). In various regions of the Aegean Sea and the Mediterranean, the ostracod and foraminiferal distributions and their systematical studies close to the subject of this research were carried out (Altınsaçlı and Kubanç, 1990; Kubanç and Altınsaçlı, 1990; Nazik, 1994; Şafak, 1999, 2008; Tunoğlu, 2001; Kubanç, 1995; 2005; 2006; Çulha and Tunoğlu, 2008, 2009; Ertekin and Tunoğlu, 2008; Meriç et al., 2002; Meriç et al., 2008a, b, c, d, e; Meriç et al., 2009a,b; Perçin-Paçal, 2011; Meriç et al., 2012a, b, c; Meriç et al., 2014; Parlak and Nazik, 2014).

The bottom sediments collected from different stations in The Gulf of Antalya, which they have

different environmental conditions, the core studies carried out within sea bottom sediments around Ayvalık (Alibey and Maden islands) in the Aegean Sea, and samples possessing different characteristics taken from the vicinity of mineral water springs in the Gulf of Kuşadası were investigated. The purpose of the study is; a) to examine taxonomically, b) to observe the effects of the environmental conditions, c) to determine living species through geological time to present, and d) to compare species determined in this study with previous studies carried out in the Atlantic and Mediterranean and to establish their biogeographical distributions benefiting from the similarities and differences of genera and species of the ostracod assemblage found in bottom sediments of Mediterranean and Aegean Sea.

*Corresponding author: Atike Nazik, anazik@cu.edu.tr

<http://dx.doi.org/10.19111/bmre.45467>



Figure 1- Location map of study areas (Parlak and Nazik, 2014).

2. Material and Method

The main material of the study is formed by 106 samples taken from bottom sediments at depths of 5-30 meters in the Gulf of Antalya, 84 samples belonging to 4 cores taken from the vicinities of Alibey and Maden islands located in northwestern Ayvalık and 45 samples collected from Kuşadası region at depths of 8.5-22.3 meters in the Aegean Sea.

Samples from the Gulf of Antalya (Mediterranean) were taken by the member of Bosphorus University Diving Club within scope of "Ecological Regional Scale Protection and Responsible Tourism on Lycian Coasts Project, Marine Biodiversity Research, 2002" by the World Wildlife Fund (WWF-Turkey).

Samples belonging to 11 cores in the Aegean Sea were taken by Meriç et al. (2009c) in 4 areas (3 locations in northern part of the Alibey Island and 1 location in east of the Maden Island). The material of this research consist of total 84 samples of each core selected in 4 localities and their ostracod content was studies. The depths at which the samples were taken vary between 0.80-8.00 meters. The coordinates of the points, where the cores were taken, and the length of cores are given in table 1.

The samples taken from Pamucak Bay at northwest of Kuşadası in Aydın province covers samples collected from the vicinity of a mineral water spring which is 200 meters away from the shore at 12.40 m depth, at 19.6 °C temperature. 45 actual sediment samples were collected in 2007 autumn by free diving

Table 1- Lengths, coordinates and water depths of cores taken from Ayvalık region (Meriç et al., 2009c)

Core name	Latitude	Longitude	Water Depth (m)	Core Length (cm)
1 c	39°22.548'	26°38.552'	-1,5	45
2 c	39°23.427'	26°36.029'	-8	42
3 a	39°22.394'	26°36.929'	-2,7	45
4 b	39°22.220'	26°37.499'	-0,8	52

method; one of them being at the center, and the others being at 5-100 m in east, 5-45 m in west, 5-50 m in north and 5-50 m south directions horizontally, with depths varying between 8.5-20.2 meters (Meriç et al., 2009b). The horizontal distance, direction, water depth and water temperature estimations of these samples with respect to source area are given in table 2.

All samples used in this study were supplied by Prof. Engin Meriç as a research material.

The identification of genera and species of ostracods were examined under binocular microscope. Both the external and internal views of carapace and valves of ostracods were studied. In determining genera and species, Van Morkhoven (1963), Hartmann and Puri (1974), Bonaduce et al. (1975), Breman (1975), Yassinsi (1979), Guillaume et al. (1985), Athersuch et al. (1989), Zangger and Malz, (1989), Mostafawi and Matzke-Karasch (2006), Joachim and Langer (2008) and “MarBEF Data System” (<http://www.marbef.org/data/>) were used.

Ostracod images of the Antalya samples were taken in Scanning Electron Microscope (SEM) of Şişecam Group, Turkey and as for the images of Ayvalık and Kuşadası samples SEM images were taken in the laboratory of the Advanced Technology Education, Research and Application Center (METIAM), Mersin University. SEM images of ostracod species are given in plates 1-3.

3. Research Findings

The study was conducted with the ostracod investigation of samples taken from the Gulf of Antalya and Ayvalık-Kuşadası (Aegean Sea). 26 species in Mediterranean, 34 species in Ayvalık region) and 29 species in Kuşadası region in the Aegean Sea were identified. The graphic of family percentage distribution for ostracods in the study was prepared (Figure 2). When the ostracod assemblage is numerically assessed, and the carapace morphology and depth are taken into consideration, it is observed

that genera of Trachyleberidae and Hemicytheridae families, which have very ornamentation with distinctive shallow marine characteristics, with developed hinge, distinct eye spots and branched margin-pore canals, are relatively more than the number of individuals.

As a result of this study, the information about the ostracod assemblage of both regions was given below in detail.

Table 2-Direction, distance, depth and water temperature of samples taken from the vicinity of Kuşadası Spring.

Sample Number		Horizontal distance	Direction	Depth	Water
CB 001	A	From Spring	From Spring	12,4 m	19,6
CB 002	A	5 m	South	11,1 m	17,5
CB 003	A	10 m	South	9,7 m	17,5
CB 004	A	15 m	South	9,2 m	17,5
CB 005	A	20 m	South	9,5 m	17,5
CB 006	A	25 m	South	10,5 m	17,5
CB 007	A	30 m	South	11,3 m	17,5
CB 008	A	35 m	South	12,3 m	17,5
CB 009	A	40 m	South	12,5 m	17,5
CB 010	A	45 m	South	13,7 m	17,5
CB 011	A	50 m	South	14,9 m	17,5
CB 012	A	5 m	North	8,9 m	17,5
CB 013	A	10 m	North	8,5 m	17,5
CB 014	A	15 m	North	8,7 m	17,5
CB 015	A	20 m	North	9,0 m	17,5
CB 016	A	25 m	North	10,1 m	17,5
CB 017	A	30 m	North	10,9 m	17,5
CB 018	A	35 m	North	12 m	17,5
CB 019	A	40 m	North	13,1 m	17,5
CB 020	A	45 m	North	14,2 m	17,5
CB 021	A	50 m	North	20,1 m	17,5
CB 022	A	5 m	West	9,1 m	17,5
CB 023	A	10 m	West	9,3 m	17,5
CB 024	A	15 m	West	11,3 m	17,5
CB 025	A	20 m	West	12,8 m	17,5
CB 026	A	25 m	West	14,7 m	17,5
CB 027	A	30 m	West	17,3 m	17,5
CB 028	A	35 m	West	17,9 m	17,5
CB 029	A	40 m	West	18,2 m	17,5
CB 030	A	45 m	West	22,3 m	17,5
CB 031	A	5 m	East	12,8 m	17,5
CB 032	A	10 m	East	11,9 m	17,5
CB 033	A	15 m	East	12,1 m	17,5
CB 034	A	20 m	East	11,5 m	17,5
CB 035	A	25 m	East	14,4 m	17,5
CB 036	A	30 m	East	15,3 m	17,5
CB 037	A	35 m	East	15,9 m	17,5
CB 038	A	40 m	East	18,1 m	17,5
CB 039	A	45 m	East	19,1 m	17,5
CB 040	A	50 m	East	19,5 m	17,5
CB 041	A	60 m	East	19,4 m	17,5
CB 042	A	70 m	East	19,1 m	17,5
CB 043	A	80 m	East	20,2 m	17,5
CB 044	A	90 m	East	20,1 m	17,5
CB 045	A	100 m	East	20,2 m	17,5

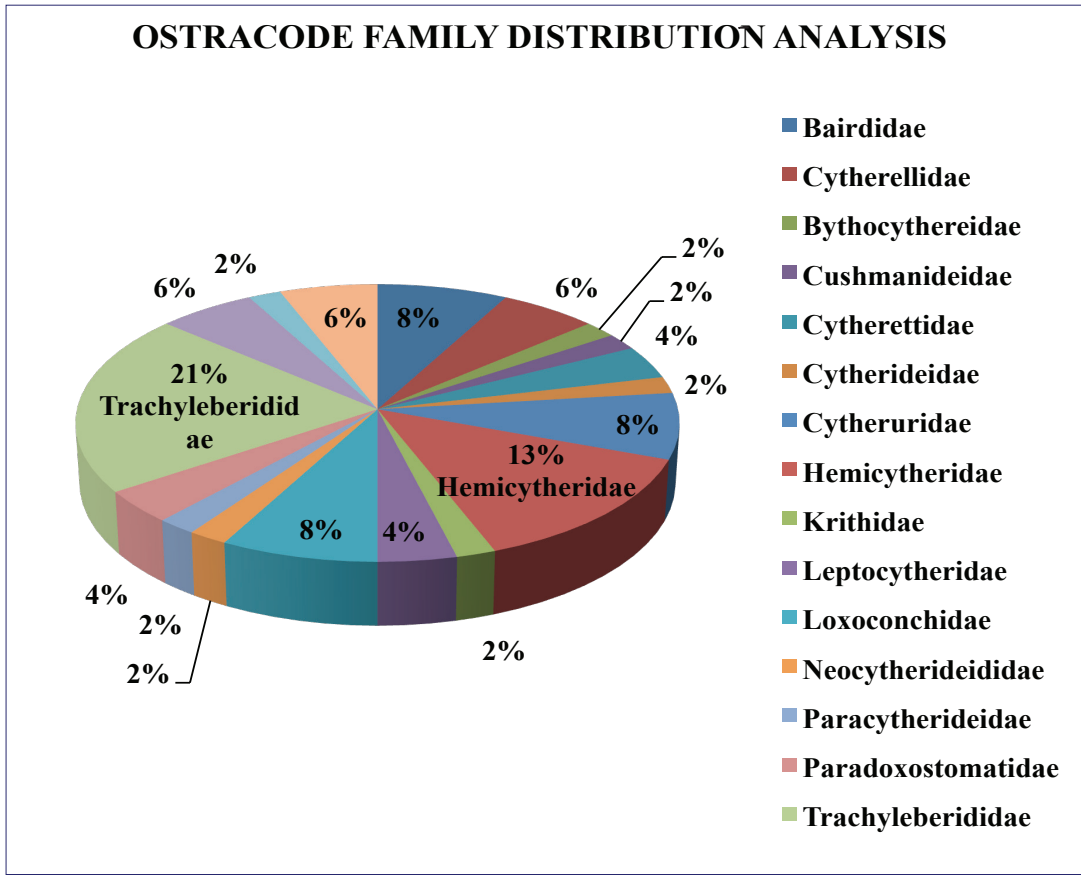


Figure 2- The percentage distribution of ostracod families in the study.

3.1. The Gulf of Antalya Ostracod Assemblage

The ostracod content of 197 samples taken from bottom sediments at depths of 5-30 meters in Antalya Bay was investigated, and 20 genera and 26 species were identified (Table 3a, b).

Genera of *Xestoleberis*, *Loxoconcha*, *Neonesidea*, *Urocythereis*, *Aurila*, *Jugosocythereis* from the the Gulf of Antalya ostracod assemblage were widely observed. According to recent ostracod studies carried out among widespread genera, it is known that *Neonesidea* lives at depths of 5-40 m, in sandy silty layers; *Jugosocythereis* at depths of 12-120 m in layers with *Posidonia*, calcereous algae and in sands with *Amphioxus*; *Loxoconcha* generally at depths below 30-40 m; *Urocythereis* at depths of 0-30 m in sandy layers and *Aurila* lives at depths of 0-128 m in sandy layers (Van Morkhoven, 1963; Breman, 1975; Bonaduce et al., 1975; Yassini, 1979). The genera of *Pterygocythereis*, *Henryhowella* and *Propontocypris*, which generally live in bathyal environment but rarely observed in littoral environment, were identified in a couple of stations. Besides; the ostracod assemblage

with genera less than 2 were encountered in stations 8/12m, 10/8m, 25/A1 S10, 35/14-15m, 51/14m, 69/12-24m, 86/15m, 100/12-24m, 106/12m, 107/24m, 112/12m, 114/24m, 115/24m, 116/20m, 135/10 m.

The Gulf of Antalya ostracod assemblage was compared with ostracod assemblages found in studies carried out in Aegean Islands (Sissing, 1972; Adriatic Sea (Bonaduce et al., 1975; Breman, 1975), Algeria (Yassini, 1979), Gökçeada-Bozcaada-Çanakkale (Şafak, 1999; Meriç et al., 2002; Meriç et al., 2009a; Öner et al., 2013), Sea of Marmara (Tunoğlu, 1999; Nazik, 2001; Kubanç, C. 2002; Kubanç, N. 2005; Kırıcı-Elmas et al., 2007), western Black Sea (Kılıç, 2001; Ongan et al., 2009;), Izmir (Meriç et al., 2011; 2012b), Edremit Bay (Meriç, 2012c), and in Mediterranean (Nazik, 1994; Şafak, 2003, 2008; Ertekin and Tunoğlu, 2008); so big similarities in genera and species were identified. It was also determined that *Aurila convexa*, *Loxoconcha rhomboidea*, *Cytheridea neapolitana*, *Xestoleberis communis*, *Xestoleberis dispar*, *Jugosocythereis prava*, *Neonesidea corpulenta* and *Urocythereis margaritifera* species were also widespread.

3.2. Ostracod Assemblage

Alibey and Maden islands, Ayvalık and Kuşadası regions were studied in the Aegean Sea. Detailed information related to the ostracod assemblage of these two regions is given below.

3.2.1. Ayvalık (Alibey and Maden Islands) Ostracod Assemblage

For each 4 cores performed in the vicinity of Alibey and Maden islands in northwest Ayvalık, 21 samples were collected from core 4b at a water depth of 0.80 m, from core 1c at 1.5 m, from core 3a at 2.70 m and from core 2c at 8.00 m. The distribution of ostracod species according to cores is given in table 4. As a result of studies carried out in these samples, 3 species from Bairdiidae family, 2 species from Cytherellidae family, 5 species from Hemicytheridae family, 8 species from Trachyleberidae family, 2 species from Cytherettidae family, 2 species from Leptocytheridae family, 1 species from Cytheruridae family, 1 species from Paracytheridae family, 3 species from Loxoconchidae family, 1 species from Cytherideidae family, 1 species from Neocytherideidae family, 1 species from Cushmanidae family, 1 species from Candonidae family, 1 species from Pontocytheridae family and 1 species from Cyprididae family were determined.

Ostracods were compared with studies carried out by Yassini (1979); Guillaume et al. (1985), Nazik (1994), Gülen et al. (1995), Oertli (1985), Szczechura (1998), Tunoğlu (1999), Şafak (1999), Meriç et al. (2005), Schneider et al. (2005). Among these species, *Carinocythereis*, *Xestoleberis*, *Loxoconcha*, *Urocythereis*, *Cytheretta*, *Aurila* and *Cytherelloidea* genera were identified also in 4 cores taken in the study area. It was observed that the number of ostracod genera and species increased based on water depth. These genera generally constitute epineritic (0-100 m) assemblage. Considering the carapace morphology and depth, it was observed that genera of Trachyleberidae and Hemicytheridae families, which have very ornamentation with distinctive shallow marine characteristics, with developed hinge, distinct eye spots and branched margin-pore canals, were relatively more than the number of individuals.

In the study, ostracod species known in the Atlantic and the Mediterranean such as; *Neonesidea corpulenta*, *Aurila convexa*, *Jugosocythereis prava*,

Carinocythereis antiquata, *Carinocythereis carinata*, *Costa batei*, *Semicytherura inversa*, *Loxoconcha rhomboidea*, *Sahnia fasciata*, *Cushmanidea elongata*, *Urocythereis oblonga* and ostracod species known in the Mediterranean such as; *Neonesidea formosa*, *Triebelina raripila*, *Cytherella (Cytherelloidea) beckmanni*, *Cytherelloidea sordida*, *Aurila arborescens*, *Carinocythereis rhombica*, *Hiltermannicythere rubra*, *Hiltermannicythere turbida*, *Cytheretta adriatica*, *Cytheretta judaea*, *Callistocythere intricatoides*, *Urocythereis crenulosa*, *Acanthocythereis hystrix*, *Paracytheridea depressa*, *Loxoconcha stellifera*, *Xestoleberis communis*, *Xestoleberis dispar*, *Pontocypris mytiloides*, *Caudites calceolatus* were determined.

Table 4- Ostracod species in cores of the Ayvalık region.

OSTRACODA	Ayvalık 1c	Ayvalık 2c	Ayvalık 3a	Ayvalık 4b
<i>Neonesidea corpulenta</i>	*	*	*	
<i>Neonesidea formosa</i>	*	*		
<i>Triebelina raripila</i>		*		
<i>Cytherella (Cytherelloidea) beckmanni</i>	*	*		*
<i>Cytherelloidea sordida</i>	*	*	*	*
<i>Aurila arborescens</i>	*	*	*	*
<i>Aurila convexa</i>	*	*	*	*
<i>Caudites calceolatus</i>		*		
<i>Jugosocythereis prava</i>	*	*	*	
<i>Carinocythereis antiquata</i>		*	*	
<i>Carinocythereis carinata</i>	*	*	*	
<i>Carinocythereis rhombica</i>		*	*	
<i>Hiltermannicythere rubra</i>	*	*	*	
<i>Hiltermannicythere turbida</i>	*	*	*	
<i>Cytheretta adriatica</i>	*	*	*	*
<i>Cytheretta judaea</i>		*		
<i>Costa batei</i>	*	*	*	
<i>Callistocythere intricatoides</i>	*	*	*	
<i>Leptocythere sp.</i>	*			
<i>Urocythereis crenulosa</i>		*	*	
<i>Urocythereis oblonga</i>	*	*	*	*
<i>Acanthocythereis hystrix</i>		*	*	
<i>Semicytherura inversa</i>	*	*	*	
<i>Paracytheridea depressa</i>	*	*	*	
<i>Loxoconcha rhomboidea</i>	*	*	*	*
<i>Loxoconcha stellifera</i>		*	*	
<i>Cyprideis torosa</i>		*		
<i>Sahnia fasciata</i>		*		
<i>Cushmanidea elongata</i>	*	*		
<i>Xestoleberis communis</i>	*	*	*	
<i>Xestoleberis depressa</i>	*	*	*	
<i>Xestoleberis dispar</i>	*	*	*	*
<i>Pontocypris mytiloides</i>		*	*	
<i>Heterocypris salina</i>		*		

3.2.2. Kuşadası Region Ostracod Assemblage

In the Pamucak Bay, NW Kuşadası of Aydın Province, total of 23 genera and 29 species were identified in 45 samples collected at depths of 8.5-22.3 meters at a distance of 200 meters from the coast (Table 5).

When the ostracod distribution is studied in Kuşadası samples, *Neonesidea corpulenta*, *Neonesidea formosa* from Bairdiidae family; *Aurila convexa*, *Jugosocythereis prava* from Hemicytheridae family; *Loxoconcha bairdi*, *Loxoconcha gibberosa* from Loxoconchidae family; *Xestoleberis communis*, *Xestoleberis dispar* from Xestoleberididae family and *Macropyxis adriatica* from Macrocyprididae family were widely observed. Whereas; genera such as; *Carinocythereis*, *Callistocythereis*, *Acanthocythereis*, *Bosquetina*, *Hiltermannicythere*, which are generally known in the Mediterranean, were found in very few samples. Genera of *Cytheretta*, *Carinocythereis*, *Cytherella* and *Hiltermannicythere* were observed in east of the sampling station in samples taken from deeper parts.

In sampling, it was also investigated whether hot water springs have effects on the life of organisms. When ostracod individuals were examined, there was not observed any physical and chemical differences such as; the shape failure on carapace, color change. Accordingly; there is not any negative effect of hot waters on the ostracods.

Besides; *Urocythereis* and *Pterygocythereis* genera have never been observed in Kuşadası samples.

4. Stratigraphical and Biogeographical Distribution of Ostracods

The stratigraphical and biogeographical distribution of samples, which are the main subject of this study, were studied through geological time to present (Table 6). Besides; the original distribution of identified ostracods was given in table 7, as well. In this study, Van Morkhoven (1963), Sissing (1972), Bonaduce et al. (1975), Breman (1975), Yassinski (1979), Athersuch et al. (1989), Meisch (2000), Schneider et al. (2005) and <http://www.marinespecies.org/ostracoda/> site were mainly used.

Bosquetina carinella and *Pterygocythereis ceratoptera* from Eocene to Recent were first identified on European coast and is recently known in the Mediterranean.

Acanthocythereis hystrix, *Aurila convexa*, *Callistocythere intricatoides*, *Carinocythereis carinata*, *Cushmanidea elongata*, *Cyprideis torosa*, *Cytheretta adriatica*, *Heterocypris salina*, *Hiltermannicythere rubra*, *Hiltermannicythere turbida*, *Semicytherura inversa*, *Triebelina raripila*, *Xestoleberis communis*, *Caudites calceolatus* are genera from Miocene to Recent.

Costa batei, *Jugosocythereis prava*, *Loxoconcha gibberosa*, *Loxoconcha stellifera*, *Macropyxis adriatica*, *Neonesidea corpulenta*, *Neonesidea formosa*, *Pseudopsammocythere reniformis*, *Semicytherura acuticostata*, *Urocythereis crenulosa*, *Urocythereis margaritifera*, *Xestoleberis dispar* are living genera from Pliocene to Recent.

Carinocythereis rhombica, *Cytherella (Cytherelloidea) beckmanni*, *Loxoconcha bairdi*, *Sahnia fasciata* are genera from Pleistocene to Recent.

Cytherella alvearium, *Cytherelloidea sordida*, *Ekpontocypris pirifera*, *Microcytherura fulva*, *Neonesidea formosa*, *Paracytheridea depressa*, *Paradoxostoma tenuissimum*, *Pontocypris acuminata*, *Urocythereis oblonga*, *Xestoleberis depressa* are genera described as Recent.

5. Results

The study was conducted by the ostracod examination of samples collected from the the Gulf of Antalya, Ayvalık-Kuşadası (Aegean Sea), and results obtained were given below.

The number of species identified in this study and their locations are as follows; 26 species in the Mediterranean, 34 species Ayvalık region and 29 species in Kuşadası in the Aegean Sea. 2 species from Eocene, 14 species from Miocene, 15 species from Pliocene and 6 species from Pleistocene have continued till Recent. Nine species are known in the Recent.

When the ostracod assemblage was numerically assessed, and the shell morphology and depth were taken into consideration, it was observed that genera of Trachyleberidae and Hemicytheridae families, which have very ornamented with distinctive shallow marine characteristics, with developed hinge, distinct eye spots and branched marginal pore canals, were relatively more than the number of individuals.

Table 5- The distribution of ostracod species in Kuşadası samples.

OSTRACODA	SAMPLING STATIONS																																																							
	South								North								West								East																															
	1/24 m	2/11 m	3/9,7 m	4/9,2 m	5/9,5 m	6/10,5 m	7/11,3 m	8/12,3 m	9/12,5 m	10/13,7 m	11/14,9 m	12/8,9 m	13/8,5 m	14/8,7 m	15/9 m	16/10,1 m	17/10,9 m	18/12 m	19/13,1 m	20/14,2 m	21/20,1 m	22/9,1 m	23/9,3 m	24/11,3 m	25/12,8 m	26/14,7 m	27/17,3 m	28/17,9 m	29/18,2 m	30/22,3 m	31/12,8 m	32/11,9 m	33/12,1 m	34/11,5 m	35/14,4 m	36/15,3 m	37/15,9 m	38/18,1 m	39/19,1 m	40/19,5 m	41/19,4 m	42/19,1 m	43/20,2 m	44/20,01 m	45/20,2 m											
<i>Neonessidea corpulenta</i>			*	*	*	*	*	*	*	*	*	*	*	*	*	*	*	*	*	*	*	*	*	*	*	*	*	*	*	*	*	*	*	*	*	*	*	*	*	*	*	*	*	*	*	*	*	*	*	*						
<i>Neonessidea formosa</i>																																																								
<i>Triebelina raripila</i>																																																								
<i>Cytherella alvearium</i>																																																								
<i>Aurila convexa</i>	*	*	*	*	*	*	*	*	*	*	*	*	*	*	*	*	*	*	*	*	*	*	*	*	*	*	*	*	*	*	*	*	*	*	*	*	*	*	*	*	*	*	*	*	*	*	*	*	*	*	*	*	*			
<i>Caudites calceolatus</i>			*	*	*	*	*	*	*	*	*	*	*	*	*	*	*	*	*	*	*	*	*	*	*	*	*	*	*	*	*	*	*	*	*	*	*	*	*	*	*	*	*	*	*	*	*	*	*	*	*	*	*			
<i>Jugosocythereis prava</i>			*	*	*	*	*	*	*	*	*	*	*	*	*	*	*	*	*	*	*	*	*	*	*	*	*	*	*	*	*	*	*	*	*	*	*	*	*	*	*	*	*	*	*	*	*	*	*	*	*	*	*	*		
<i>Bosquetina carinella</i>							*																																																	
<i>Carinocythereis carinata</i>																																																								
<i>Hilfermannicythere rubra</i>																																																								
<i>Hilfermannicythere turbida</i>																																																								
<i>Cytheretta judaea</i>																																																								
<i>Calistocythere intricatoides</i>						*				*																																														
<i>Paradoxostoma acuminatum</i>			*									*																																												
<i>Cytherois sp.</i>																																																								
<i>Acanthocythereis hystrix</i>																																																								
<i>Semicytherura acuticostata</i>				*																																																				
<i>Semicytherura inversa</i>					*																																																			
<i>Semicytherura paradoxa</i>																																																								
<i>Paracytheridea depressa</i>											*																																													
<i>Loxoconcha bairdi</i>	*	*	*	*	*	*	*	*	*	*	*	*	*	*	*	*	*	*	*	*	*	*	*	*	*	*	*	*	*	*	*	*	*	*	*	*	*	*	*	*	*	*	*	*	*	*	*	*	*	*	*	*	*			
<i>Loxoconcha gibberosa</i>	*	*	*	*	*	*	*	*	*	*	*	*	*	*	*	*	*	*	*	*	*	*	*	*	*	*	*	*	*	*	*	*	*	*	*	*	*	*	*	*	*	*	*	*	*	*	*	*	*	*	*	*	*	*		
<i>Sclerochilus contortus</i>																																																								
<i>Pseudosammocythere reniformis</i>				*																																																				
<i>Xestoleberis communis</i>	*	*	*	*	*	*	*	*	*	*	*	*	*	*	*	*	*	*	*	*	*	*	*	*	*	*	*	*	*	*	*	*	*	*	*	*	*	*	*	*	*	*	*	*	*	*	*	*	*	*	*	*	*			
<i>Xestoleberis dispar</i>	*	*	*	*	*	*	*	*	*	*	*	*	*	*	*	*	*	*	*	*	*	*	*	*	*	*	*	*	*	*	*	*	*	*	*	*	*	*	*	*	*	*	*	*	*	*	*	*	*	*	*	*	*			
<i>Macropyxis adriatica</i>	*	*	*	*	*	*	*	*	*	*	*	*	*	*	*	*	*	*	*	*	*	*	*	*	*	*	*	*	*	*	*	*	*	*	*	*	*	*	*	*	*	*	*	*	*	*	*	*	*	*	*	*	*			
<i>Pontocypris acuminata</i>																																																								
<i>Ekpontocypris prifer</i>																																																								

Table 6-The stratigraphical and biogeographical distributions of ostracod species in the study.

OSTRACODA	Eocene/Oligocene	Miocene	Pliocene	Pleistocene	Holocene
<i>Bosquetina carinella</i>	Ec	Ec, Ew, Mt	Ec, Ew, Mt	Mt	Mt
<i>Pterygocythereis ceratoptera</i>	Ecw	Ecw, Mt	Mt	Mt	Mt, Ew
<i>Acanthocythereis hystrix</i>		Ec, Mt	Mt	Mt	Mt
<i>Aurila convexa</i>		Ew	Mt, Ew	Mt, Ew	Mt, Ew
<i>Callistocythere intricatoides</i>		Mg	Mt	Mt	Mt, B
<i>Carinocythereis carinata</i>		Mt	Mt	Mt	Mt, B
<i>Caudites calceolatus</i>		Mg	Mg	Mg	Mt
<i>Cushmanidea elongata</i>		Mt	Mt	Mt, Ew	Mt, Ew, A
<i>Cyprideis torosa</i>		W	W	W	W
<i>Cytheretta adriatica</i>		Mt	Mt	Mt	Mt
<i>Heterocypris salina</i>		W	W	W	W
<i>Hiltermannicythere rubra</i>		Mt	Mt	Mt	Mt, B
<i>Hiltermannicythere turbida</i>		Mt	Mt	Mt	Mt, B
<i>Semicytherura inversa</i>		Ew	Ew, Mt	Ew, Mt	Mt
<i>Triebelina raripila</i>		Mt	Mt	Mt	Mt
<i>Xestoleberis communis</i>		Mg	Mt	Mt	Mt
<i>Aurila arborescens</i>			Mt	Mt	Mt
<i>Carinocythereis antiquata</i>			Mt	Mt	Mt, Ew
<i>Costa batei</i>			Mi	Mi	Mi
<i>Jugosocythereis prava</i>			Mt	Mt	Mt, B
<i>Loxoconcha gibberosa</i>			Mg	Mg	Mg, Ag
<i>Loxoconcha stellifera</i>			Mg	Mt	Mt
<i>Macropyxis adriatica</i>			Mi	Ew	Ew
<i>Neonesidea corpulenta</i>			Mg	Mt	Mt, Ew
<i>Neonesidea formosa</i>			Mt	Mt	Mt
<i>Pseudopsammocythere reniformis</i>			Mi	Mi	Mt
<i>Semicytherura acuticostata</i>			Mt	Mt	Mt
<i>Semicytherura paradoxa</i>			Mt	Mt	Mt
<i>Urocythereis crenulosa</i>			Mt	Mt	Mt
<i>Urocythereis margaritifera</i>			Mg	Mt	Mt, Ew
<i>Xestoleberis dispar</i>			Mg	Mt	Mt
<i>Carinocythereis rhombica</i>				Mg	Mg, Ag
<i>Cytherella (Cytherelloidea) beckmanni</i>				Mt	Mt
<i>Cytheretta judaea</i>				Mi	Mt
<i>Loxoconcha bairdi</i>				Mi	Mt
<i>Sahnia fasciata</i>				Mi	Mt, Ew
<i>Sclerochilus contortus</i>				Mt, Ew	Mt, Ew
<i>Cytherella alvearium</i>					Mt
<i>Cytherelloidea sordida</i>					Mt
<i>Ekpontocypris pirifera</i>					Mt, Ew
<i>Loxoconcha rhomboidea</i>					Mt
<i>Microcytherura fulva</i>					Ma
<i>Paracytheridea depressa</i>					Mt, Ew
<i>Paradoxostoma acuminatum</i>					Ew
<i>Pontocypris acuminata</i>					Mt, Ew
<i>Pontocypris mytiloides</i>					Mt, Ew
Mt= Whole Mediterranean		Ec= Central Europe			
Mi= Italian coasts		Ew=Atlantic coast of Europe			
Ma=Adriatic		A=Atlantic coasts of Central America			
Mg= Greek coasts		W= Worldwide			
B= Black Sea		Ag= Aegean Sea			

Table 7- The correlation of ostracod species in the study based on their regions and origins.

OSTRACODA	ANTALYA	AYVALIK	KUŞADASI	MEDITERRANEAN ORIGIN	MEDITERRANEAN-ATLANTIC ORIGIN
<i>Acanthocythereis hystrix</i>		*	*	●	
<i>Aurila arborescens</i>	*	*		●	
<i>Aurila convexa</i>	*	*	*		▲
<i>Bosquetina carinella</i>			*		▲
<i>Callistocythere intricatoides</i>	*	*	*	●	
<i>Carinocythereis antiquata</i>		*			▲
<i>Carinocythereis carinata</i>	*	*	*		▲
<i>Carinocythereis rhombica</i>		*		●	
<i>Caudites calceolatus</i>		*	*	●	
<i>Costa batei</i>	*	*			▲
<i>Cushmanidea elongata</i>	*	*			▲
<i>Cyprideis torosa</i>		*			▲
<i>Cytherella (Cytherelloidea) beckmanni</i>	*	*		●	
<i>Cytherella alvearium</i>			*	●	
<i>Cytherelloidea sordida</i>	*	*		●	
<i>Cytheretta adriatica</i>		*		●	
<i>Cytheretta judaea</i>		*	*	●	
<i>Cytherois sp.</i>	*		*		
<i>Ekpontocypris pirifera</i>	*		*		▲
<i>Henryhowella sp.</i>	*				
<i>Heterocypris salina</i>		*			▲
<i>Hiltermannicythere rubra</i>	*	*	*	●	
<i>Hiltermannicythere turbida</i>	*	*	*	●	
<i>Jugosocythereis prava</i>	*	*	*	●	
<i>Leptocythere sp.</i>		*			
<i>Loxoconcha bairdi</i>			*	●	
<i>Loxoconcha gibberosa</i>			*	●	
<i>Loxoconcha rhomboidea</i>	*	*		●	
<i>Loxoconcha stellifera</i>		*		●	
<i>Macropyxis adriatica</i>			*		▲
<i>Microcytherura fulva</i>	*			●	
<i>Neonesidea corpulenta</i>	*	*	*		▲
<i>Neonesidea formosa</i>	*	*	*	●	
<i>Paracytheridea depressa</i>		*	*		▲
<i>Paradoxostoma acuminatum</i>			*		▲
<i>Pontocypris acuminata</i>			*		▲
<i>Pontocypris mytiloides</i>		*	*		▲
<i>Pseudopsammocythere reniformis</i>			*	●	
<i>Pterygocythereis ceratoptera</i>	*				▲
<i>Sahnia fasciata</i>	*	*			▲
<i>Sclerochilus contortus</i>			*		▲
<i>Semicytherura acuticostata</i>			*	●	
<i>Semicytherura inversa</i>		*	*		▲
<i>Semicytherura paradoxa</i>			*	●	
<i>Triebelina raripila</i>	*	*	*	●	
<i>Urocythereis crenulosa</i>		*		●	
<i>Urocythereis margaritifera</i>	*				▲
<i>Urocythereis oblonga</i>	*	*			▲
<i>Xestoleberis communis</i>	*	*	*	●	
<i>Xestoleberis depressa</i>	*	*			▲
<i>Xestoleberis dispar</i>	*	*	*	●	

(● Endemik Akdeniz).

(▲ Akdeniz- Atlantik)

The ostracod assemblage found in this study were compared with previous studies carried out in the Mediterranean, the Aegean islands, the Adriatic Sea, Algeria, the Sea of Marmara and the Aegean Sea (Turkey). As a result; prevailing ostracod species such as; *Neonesidea corpulenta*, *Aurila convexa*, *Jugosocythereis prava*, *Carinocythereis antiquata*, *Carinocythereis carinata*, *Costa batei*, *Semicytherura inversa*, *Loxocochoa rhomboidea*, *Sahnia fasciata*, *Cushmanidea elongata* known in Atlantic and the Mediterranean, and species such as; *Neonesidea formosa*, *Triebelina raripila*, *Cytherella (Cytherelloidea) beckmanni*, *Cytherelloidea sordida*, *Aurila arborescens*, *Carinocythereis rhombica*, *Hiltermannicythere rubra*, *Hiltermannicythere turbida*, *Cytheretta adriatica*, *Cytheretta judaea*, *Callistocythere intricatoides*, *Urocythereis crenulosa*, *Acanthocythereis hystrix*, *Paracytheridea depressa*, *Xestoleberis communis*, *Xestoleberis dispar* and *Pontocypris acuminata* known in the Mediterranean were determined.

Besides; *Callistocythereis intricatoides*, *Carinocythereis carinata*, *Hiltermannicythere rubra*, *Hiltermannicythere turbida* and *Jugosocythereis prava* species, which are Mediterranean in origin, were found in studies carried out in Black Sea.

Acknowledgements

Authors thank to the Geological Dept. of the Çukurova University for research facilities given during the preparation of this article, to the retired academician of the Istanbul University, Prof. Engin Meriç, who gave support and provided actual samples collected from Antalya, Ayvalık and Kuşadası regions. Besides; the authors present their appreciation to Advanced Technology Education, Research and Application Center (MEİTAM), Mersin University and to the executives of Şişecam Group.

References

- Altınsaçlı, S., Kubanç, C. 1990. Ayvalık Yöresi Ostrakod (Crustacea) Faunası Dağılımı. *10. Ulusal Biyoloji Kongresi*, 18-20 Temmuz, Erzurum, 47-55.
- Athersuch, J., Horne, D.J., Whittaker, J.E. 1989. Marine and brackish water ostracods. Synopses of the British Fauna (New Series), *E.J.Brill.*, 43, 1-343.
- Bonaduce, G., Ciampo, G., Masoli, M. 1975. Distribution of ostracoda in the Adriatic Sea. *Pubblicazioni della Stazione Zoologica di Napoli* 40 (Suppl.), 1-304.

- Breman, E. 1975. The Distribution of Ostracodes in the Bottom Sediments Of The Adriatic Sea. Vrije Universiteit te Amsterdam, *Krips Repto, Meppel*, 1-165.
- Çulha G., Tunoğlu C. 2008. Gökçeada ve Marmaris arasında yer alan Ege Körfezleri'nin (Batı Türkiye) Güncel ostrakod topluluğu (Recent Ostracoda associations along the Aegean Gulfs between Gökçeada and Marmaris-West of Turkey), *61. Türkiye Jeoloji Kurultayı, Bildiri Özleri*, 24-28 Mart 2008, Ankara, 329-330.
- Çulha, G., Tunoğlu, C. 2009. Türkiye'nin Ege Körfezlerinde Polyclope cinsinin (Ostracoda) dağılımı ve sistematigi. *IPETGAS 2009, 17. Int. Petroleum and Natural Gas, Congress and Exhibition of Turkey* 31-32, Ankara.
- Ertekin, İ. K., Tunoğlu C. 2008. Pleistocene-Holocene Marine Ostracods From Mersin Offshore Sediments, Turkey, Eastern Mediterranean, 51, 4, Part II, P. Frenzel, I. Boomer, U. Schudack, J.-P. Colin (Ed.). *Revue de Micropaléontologie* 309-326.
- Guillaume, M.C., Peypouquet, J.P, Tetart, J. 1985. Quaternaire et actuel. Atlas des Ostracodes de France. H.J. Oertli (Ed.). *Bulletin Centres Recherche Exploration Proceeding Elf-Aquitaine. Mémoire* 9, 337-377.
- Gülen, D., Kubanç, C., Altınsaçlı, S. 1995. Ostracoda fauna of the Quaternary sequence in the Gulf of İzmit. Quaternary sequence in the Gulf of İzmit. E. Meriç (Ed.), *Kocaeli Valiliği Çevre Koruma Vakfı* 153-171.
- Hartmann, G., Puri, S.H. 1974. Summary of neontological and paleontological classification of ostracoda, *Mitteilungen aus dem Zoologischen Staatsinstitut und Zoologischem Museum in Hamburg, Band, 70*, 7-73.
- Joachim, C., Langer, M.R. 2008. The 80 most common Ostracods from the Bay of Fetovaia Elba Island (Mediterranean Sea). *Universität Bonn*, 29p.
- Kılıç, M. 2001. Recent Ostracoda (Crustacea) Fauna of the Black Sea Coasts of Turkey. *Turkish Journal Zoology* 25, 375-388.
- Kırcı-Elmas, E., Algan, O., Özkar Öngen, İ., Struck, U., Altenbach, A. V., Sagular, E. K., Nazik, A. 2007. Palaeoenvironmental Investigation of Sapropelic Sediments from the Marmara Sea: A Biostratigraphic Approach to Palaeoceanographic History During the Last Glacial-Holocene. *Turkish Journal Earth Sciences* 17, 129-168.

- Kubanç, C. 1995. Ege Denizi Ostrakod (Crustacea) faunası. Doktora tezi, İstanbul Üniversitesi, 117s, İstanbul (unpublished).
- Kubanç, C. 2002. Preliminary study on the ostracoda (Crustacea) fauna of Marmara Sea. İstanbul Üniversitesi, *Journal of Fisheries and Aquatic Sciences* 13, 65-80.
- Kubanç C., Altınsoçlu S. 1990. Ayvalık-Bergama Lagün Ostrakod (Crustacea) Faunası, 10. *Ulusal Biyoloji Kongresi*, Erzurum, 18-20 Temmuz 1990, 37-46.
- Kubanç, S.N. 2005. Diversity and Comparison of Ostracoda of South Marmara Sea. *Journal of Black Sea/Mediterranean Environment* 11, 257-275.
- Kubanç, S.N. 2006. Saros Körfezi Ostracod (Crustacea) Faunası. *İstanbul Üniversitesi Su Ürünleri Dergisi* 20, 27-43.
- Meisch, C. 2000. Freshwater Ostracoda of Western and Central Europe. 522p. *Spektrum Akademischer*, Heidelberg, Berlin.
- Meriç, E., Avşar, N., Nazik, A. 2002. Benthic Foraminifera and Ostracoda fauna of the Bozcaada (Northern Aegean Sea) and local variations in these assemblages. *Yerbilimleri Geosound* 40-41, 97-119.
- Meriç, E., Avşar, N., Nazik, A., Alpar, B., Yokeş, B., Barut, İ.F., Ünlü, S. 2005. Gemlik Körfezi yüzey çökellerinin foraminifer, ostrakod ve mollusk faunası, foraminifer kavkılarında gözlenen morfolojik anomaliler ile bölgenin sedimentolojik, hidrojeokimyasal ve biyokimyasal özellikleri. *Maden Tetkik ve Arama Dergisi* 131, 21-48.
- Meriç, E., Avşar, N., Yokeş, B., Dinçer, F. 2008a. Alibey ve Maden Adaları (Ayvalık-Balıkesir) yakın çevresi bentik foraminiferlerinin taksonomik dağılımı. *Maden Tetkik ve Arama Dergisi* 137, 49-65.
- Meriç, E., Avşar, N., Nazik, A., Yokeş, B., Dinçer, F. 2008b. A review of benthic foraminifers and ostracodes of the Antalya coast. *Micropaleontology* 54, 199-240.
- Meriç, E., Avşar, N., Nazik, A., Yokeş, B., Tuğrul, A.B., Bayarı, S., Özyurt, N., Barut, İ.F., Balkis, N., Uysal, K., Kam, E. 2008c. Morphological abnormalities in benthic foraminifers of the Antalya coast. *Micropaleontology* 54, 241-276.
- Meriç, E., Avşar, N., Yokeş, B. 2008d. *Amphisorus hemprii* Ehrenberg (Rhizopoda, foraminifera) along the Antalya coast. *Micropaleontology* 54, 307-349.
- Meriç, E., Avşar, N., Yokeş, B. 2008e. Some alien foraminifers along the Aegean and southwestern coasts of Turkey. E. Meriç, M. B. Yokeş (Ed.). Recent benthic foraminifera along the southwest coasts of Antalya (SW Turkey) and the impact of alien species on autochthonous fauna. *Micropaleontology* 54, 307-349.
- Meriç, E., Avşar, N., Nazik, A., Yokeş, B., Ergin, M., Eryılmaz, M., Yücesoy-Eryılmaz, F., Gökaşan, E., Suner, F., Tur, H., Aydın, Ş., Dinçer, F. 2009a. Çanak-kale Boğazı'nın Güncel Bentik Foraminifer, Ostrakod, Mollusk Topluluğunu Denetleyen Faktörler ile Çökel Dağılımının Jeokimyası. *Türkiye Jeoloji Bülteni* 52, 155-216.
- Meriç, E., Avşar, N., Barut, İ.F., Yokeş, B., Taş, S., Eryılmaz, M., Dinçer, F., Bircan, C. 2009b. Kuşadası (Aydın) Deniz Dibi Mineralli Su Kaynağı Çevresi Bentik Foraminifer Topluluğu Hakkında Görüş ve Yorumlar. Önlü, H. (Ed.). 13. *Sualtı Bilim ve Teknolojileri Toplantısı Bildiri Kitabı*, 7-8 Kasım 2009, 80-92.
- Meriç, E., Avşar, N., Mekik, F., Yokeş, B., Barut, İ.F., Dora, Ö., Suner, F., Yücesoy-Eryılmaz F., Eryılmaz, M., Dinçer F., Kam, E. 2009c. Alibey ve Maden Adaları (Ayvalık-Balıkesir) Çevresi Genç Çökellerinde Gözlenen Bentik Foraminifer Kavkılarındaki Anormal Oluşumlar ve Nedenleri. *Türkiye Jeoloji Bülteni* 52, 31-84.
- Meriç, E., Avşar, Nazik, A., Yokeş, M.B., Barut, F.İ., Eryılmaz, M., Kam, E., Taşkın, H., Başsarı, A., Dinçer, F., Bircan, C., Kaygun, A. 2011. Ilıca Koyu (Çeşme-İzmir) bentik foraminifer-ostrakod toplulukları ile Pasifik Okyanusu ve Kızıl Deniz kökenli göçmen foraminiferler ve anormal bireyler. 64. *Türkiye Jeoloji Kurultayı Bildiri Özleri Kitabı* 272-273, Ankara.
- Meriç, E., Avşar, N., Nazik, A., Yokeş, B., Dora, Ö., Barut, İ.F., Eryılmaz, M., Dinçer, F., Kam, E., Aksu, A., Taşkın, H., Başsarı, A., Bircan, C., Kaygun, A. 2012a. Karaburun Yarımadası Kuzey Kıyılarındaki Oşinografik Özelliklerinin Bentik Foraminifer ve Ostrakod Toplulukları Üzerindeki Etkileri. *Maden Tetkik ve Arama Dergisi* 145, 22-47.
- Meriç, E., Avşar, N., Nazik, A., Yokeş, B., Barut, İ.F., Eryılmaz, M., Kam, E., Taşkın, H., Başsarı, A., Dinçer, F., Bircan, C., Kaygun, A. 2012b. Ilıca koyu (Çeşme-İzmir) Bentik Foraminifer, Ostrakod Toplulukları ile Pasifik Okyanusu ve Kızıldeniz Kökenli Göçmen Foraminifer ve Anormal Bireyler, *Maden Tetkik ve Arama Dergisi* 145, 62-78.
- Meriç, E., Avşar, N., Nazik, A., Koçak, F., Yücesoy-Eryılmaz, F., Eryılmaz, M., Barut, İ.F., Yokeş, B., Dinçer, F., Efendi, F., Esenli, V., Özdemir, Z., Türker, A., Aydın, Ş., Dinçer, F. 2012c. Edremit Körfezi (Balıkesir) kıyı alanlarında oşinografik özelliklerin bentik foraminifer, ostrakod ve bryozoon toplulukları üzerindeki etkileri ile ilgili yeni veriler. *Türkiye Petrol Jeologları Bülteni* 24, 7-29.

- Meriç, E., Avşar, N., Yokeş, M.B., Barut, İ., Taş, S., Eryılmaz, M., Dinçer, F., Bircan, C. 2014. Opinions and comments on the benthic foraminiferal assemblage observed around the mineral submarine spring in Kuşadası (Aydın, Turkey). *Marine Biodiversity Records, Marine Biological Association of the United Kingdom*, 7, 1 – 17, e103; *Published online*, doi:10.1017/S1755267214000840.
- Mostafawi, N., Matzke-Karasz, R. 2006. Pliocene Ostracoda of Cephalonia, Greece. The Unrevised species of Uliczny (1969). *Revista Española de Micropaleontología* 38, 11-48.
- Nazik, A. 1994. İskenderun Körfezi Holosen ostrakodları. *Maden Teknik Arama Dergisi* 116, 15-20.
- Nazik, A. 2001. Ostracode faunas of bottom sediments from the continental shelf, south Marmara Sea, NW Turkey and their comparison with other shelf environments in the Mediterranean and Aegean regions. *Geological Journal* 36, 111-123.
- Oerthli, H.J. 1985. Atlas des Ostracodes de France. *Bulletin Centres Recherche Exploration Proceeding Elf-Aquitaine, Mémoire* 9, 257-335.
- Ongan, D., Algan, O., Kapan-Yeşilyurt, S., Nazik, A., Ergin, M., Eastoe, C. 2009. Benthic Faunal Assemblages of the Holocene Sediments from the Southwest Black Sea Shelf. *Turkish Journal of Earth Sciences* 18, 239-297.
- Öner, E., Meriç, E., Nazik, A., Avşar, N. 2013. Yeni Bademli Höyüğü Çevresinde Alüvyal Jeomorfoloji ve Paleontoloji Araştırmaları (Gökçeada-Çanakkale). Öner, E. (Ed.). *Prof.Dr. İlhan Kayan'a Armağan, Ege Üniversitesi Yayınları Edebiyat Fakültesi Yayını* 181, 839-871
- Parlak, D., Nazik, A. 2014. Akdeniz (Antalya Körfezi) ve Ege Denizi (Ayvalık ve Kuşadası) Dip Sedimentlerinin Ostrakod dağılımı: Benzerlikler ve Farklılıklar. 15. *Paleontoloji-Stratigrafi Çalıştayı, Bildiri Özleri Kitabı* 209-210.
- Perçin-Paçal, F. 2011. The ecology of the Ostracoda (Crustacea) species obtained from the coasts of İskenderun Bay (Eastern Mediterranean Sea). *Journal Black Sea/Mediterranean Environment* 17, 127-144.
- Schneider, S., Witt, W., Yiğitbaş, E. 2005. Ostracods and bivalves from an Upper Pleistocene (Tyrrenian) Marine Terrace Near Altınova (İzmit Province, Turkey). *Zitteliana* A45, 87-114.
- Sissingh, W. 1972. Late Cenozoic Ostracoda of the South Aegean Island Arc. *Utrecht Micropaleontological Bulletins* 6, 1-187.
- Szcechura, J. 1998. The distribution of *Triebelina raripila* and *Carinocythereis carinata* (Ostracoda) from the Middle Miocene of the Central Paratethys and Their Palaeogeographic Implications. *Journal of Micropalaeontology* 17, 125-130.
- Şafak, Ü. 1999. Recent Ostracoda Assemblage of the Gökçeada-Bozcaada-Dardanelles Region. *Yerbilimleri (Geosound)* 35, 149-172.
- Şafak, Ü. 2003. Recent ostracodes of the Yumurtalık Gulf. *Bulletin of the Mineral Research and Exploration Contents* 126, 1-10.
- Şafak, Ü. 2008. Recent Ostracoda fauna of the Mersin Gulf; Southern Turkey, and their correlation with other gulf and shelf environments in the Mediterranean and Aegean regions. *Yerbilimleri (Geosound)* 52, 1-20.
- Tunoğlu, C. 1999. Recent ostracoda association in the Sea of Marmara, NW Turkey. *Hacettepe Üniversitesi Yerbilimleri Dergisi* 21, 63-89.
- Tunoğlu, C. 2001. Recent Ostracoda assemblage and distribution in Saros Gulf (NE Aegean Sea), NW Turkey. *14th International Symposium on Ostracoda*, July 27-August 8, 2001, Shizuoka, Japan, 90.
- Van Morkhoven, F.P.C.M. 1963. Post-palaeozoic Ostracoda. Their Morphology, Taxonomy, and Economic Use. – Vol. II, Generic Descriptions, Amsterdam – London – New York, *Elsevier Publishing Company*, 1-478.
- Yassini, I. 1979. The littoral system ostracodes from the bay of Bou-İsmail, Algiers, Algeria, National Iranian Oil Company. *Revista Espanola de Micropaleontologia* XI, 353-416.
- Zangger, E., Malz, H. 1989. Late Pleistocene, Holocene, and Recent ostracods from the Gulf of Argos, Greece. *Courier Forschungsinstitut Senckenberg* 113, 159-175

PLATE

PLATE I

Figure 1. *Cytherella alvearium*, left valve side view, core Ayvalık 2c 0-2cm.

Figure 2. *Cytherella (Cytherelloidea) beckmanni*, left valve side view, core Ayvalık 2c 2-4cm.

Figure 3. *Cytherelloidea sordida*, left valve side view, ×63, Kekova-Antalya, Station 84/3m.

Figure 4. *Neonesidea corpulenta*, right valve side view, Kuşadası, Station 20.

Figure 5. *Neonesidea formosa*, left valve side view, Kuşadası, Station 24.

Figure 6. *Triebelina raripila*, right valve side view, Kuşadası, Station 23.

Figure 7. *Sclerochilus contortus*, left valve side view, Kuşadası, Station 38.

Figure 8. *Cushmanidea elongata*, right valve side view, core Ayvalık 2c 4-6 cm.

Figure 9. *Cytheretta adriatica*, left valve side view, core Ayvalık 4b 24-26 cm.

Figure 10. *Cytheretta judaea*, a. Left valve interior view, Kuşadası, Station 45, b. Right valve side view, Kuşadası, Station 38

Figure 11. *Cyprideis torosa*, left valve side view, core Ayvalık 2c 8-10 cm.

Figure 12. *Microcytherura fulva*, right valve side view, ×62, Kaş-Antalya, Station 43/21 m.

Figure 13. *Semicytherura acuticostata*, left valve side view, Kuşadası, Station 8.

Figure 14. *Semicytherura inversa*, right valve side view, Kuşadası, Station 42.

Figure 15. *Semicytherura paradoxa*, right valve side view, Kuşadası, Station 17.

Figure 16. *Aurila arborescens*, right valve side view, core Ayvalık 3a 40-42 cm.

Figure 17. *Aurila convexa*, left valve side view, ×64, Kekova-Antalya, Station 71/15m.

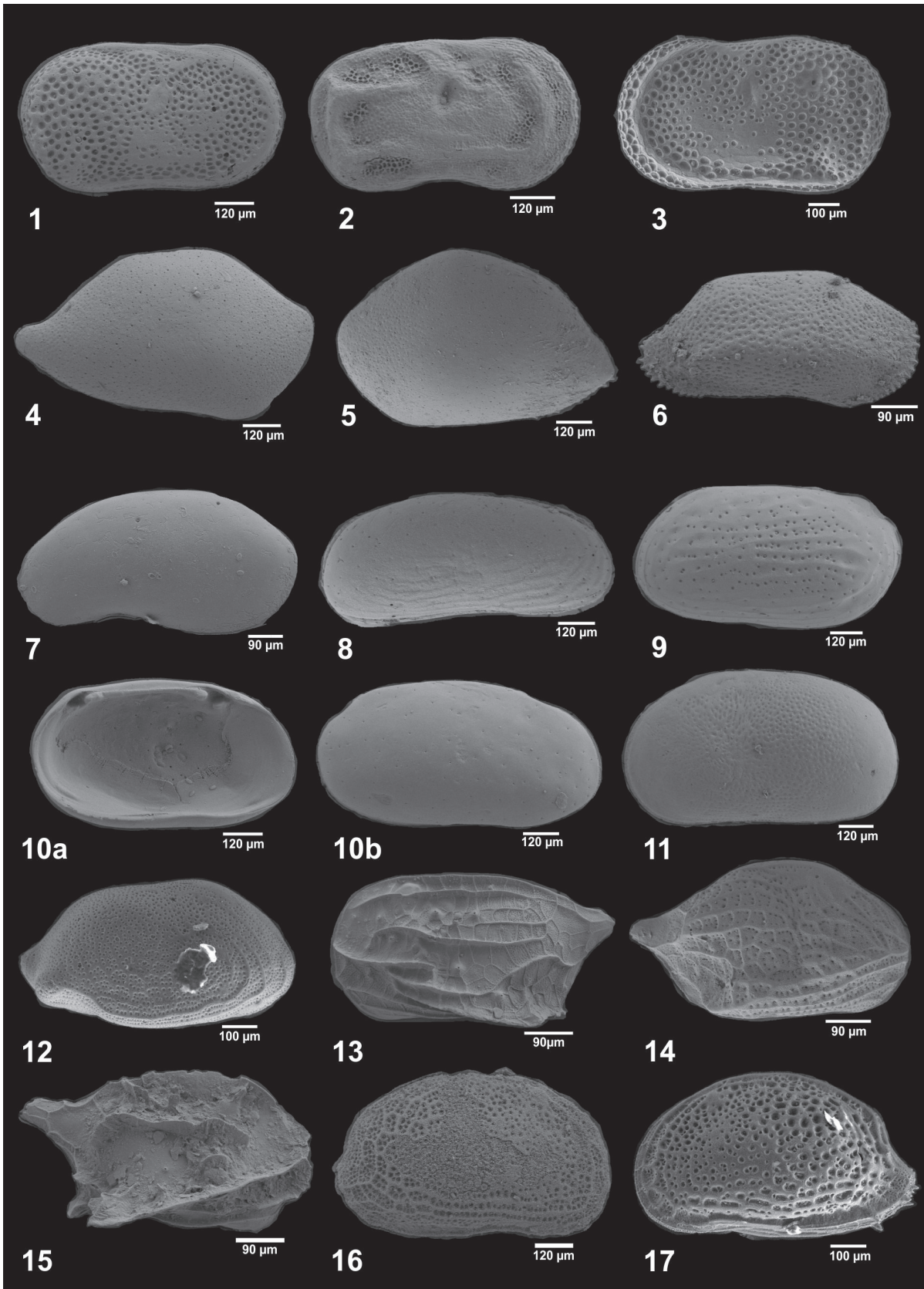


PLATE II

Figure 1. *Caudites calceolatus*, left valve side view, Kuşadası, Station 3.

Figure 2. *Jugosocythereis prava*, right valve side view, Kaş-Antalya, Station 42/9 m.

Figure 3. *Urocythereis crenulosa*, right valve side view, core Ayvalık 2c 2-4 cm.

Figure 4. *Urocythereis margaritifera*, left valve side view, Üçadalar-Antalya, Station 128/20 m.

Figure 5. *Urocythereis oblonga*, right valve side view, Kalkan-Antalya, Station 5/5 m.

Figure 6. *Pseudosammocythere reniformis*, a. Shell right external view, Kuşadası, Station 24; b. Right valve external view, Kuşadası, Station 29.

Figure 7. *Callistocythere intricatoides*, left valve external view, Kalkan-Antalya, Station 14/12 m.

Figure 8. *Loxoconcha bairdi*, left valve side view, Kuşadası, Station 34.

Figure 9. *Loxoconcha gibberosa*, left valve side view, Kuşadası, Station 18.

Figure 10. *Loxoconcha rhomboidea*, right valve side view $\times 86$, Kekova-Antalya, Station 74/23m.

Figure 11. *Loxoconcha stellifera*, a. right valve side view, b. Left valve internal view, core Ayvalık 2c 14-16 cm.

Figure 12. *Sahnia fasciata*, a. left valve side view, core Ayvalık 2c 14-16 cm; b. Left valve internal view, core Ayvalık 2c 24-26 cm.

Figure 13. *Paracytheridea depressa*, left valve side view, Kuşadası, Station 38.

Figure 14. *Paradoxostoma acuminatum*, a. right valve side view, Kuşadası, Station 19; b. Right valve internal view, Kuşadası, Station 24.

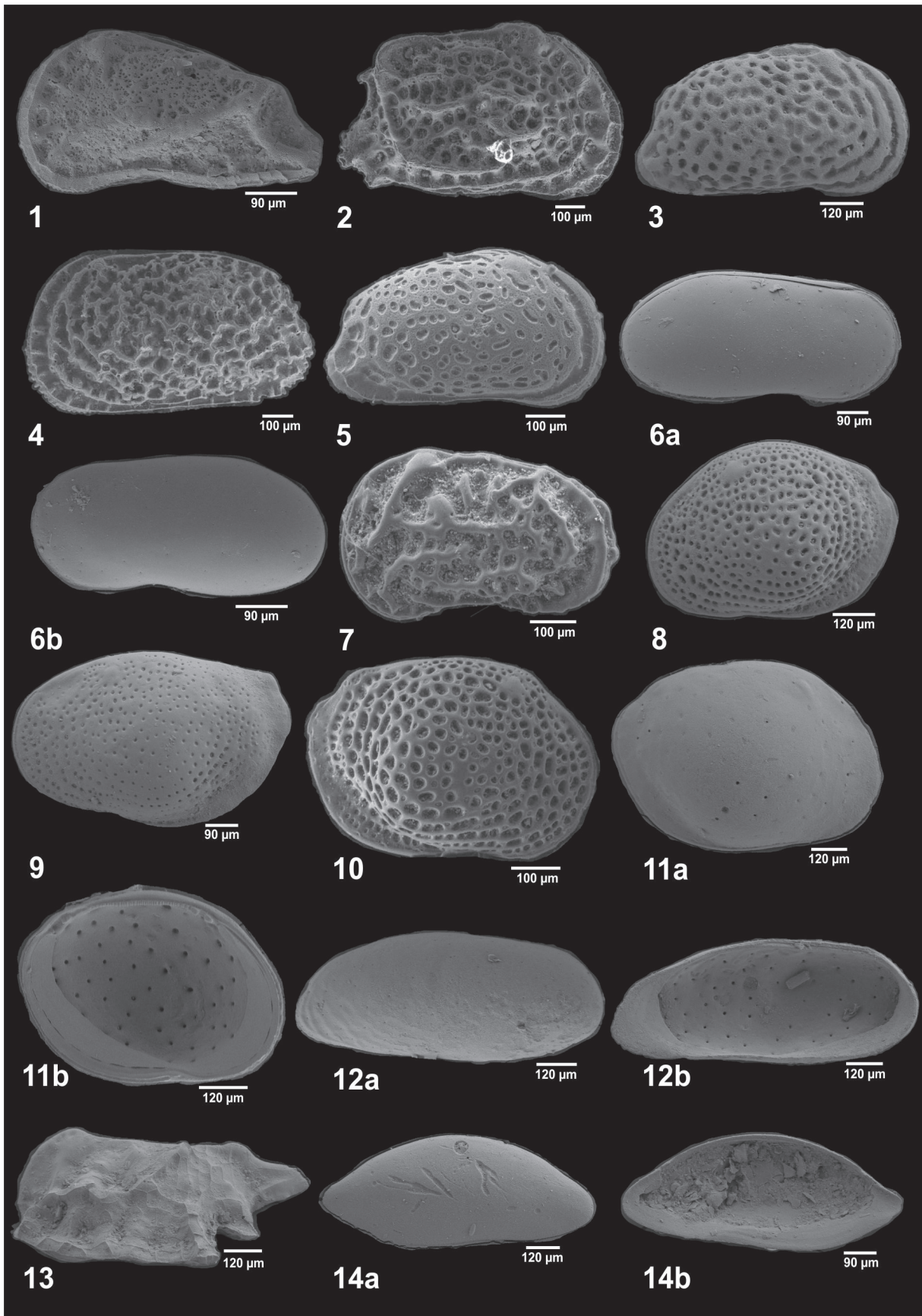


PLATE III

- Figure 1. *Cytherois* sp., right valve internal view, Kuşadası, Station 20.
- Figure 2. *Acanthocythereis hystrix*, right valve external view, Kuşadası, Station, 30.
- Figure 3. *Bosquetina carinella*, right valve external view, Kuşadası, Station, 45.
- Figure 4. *Carinocythereis antiquata*, left valve external view, core Ayvalık 3a 34-36 cm.
- Figure 5. *Carinocythereis carinata*, left valve external view, core Ayvalık 2c 40-42 cm.
- Figure 6. *Carinocythereis rhombica*, right valve external view, core Ayvalık 2c 24, 26 cm
- Figure 7. *Costa batei*, right valve external view, ×61, Kekova-Antalya, Station 99/24 m.
- Figure 8. *Henryhowella* sp., left valve external view, ×53, Üçadalar-Antalya, Station 122/30 m.
- Figure 9. *Hiltermannicythere rubra*, left valve external view, Ayvalık 2c karotu 40-42 cm.
- Figure 10. *Hiltermannicythere turbida*, right valve external view, ×57, Kekova/Antalya, Station 102/24 m.
- Figure 11. *Pterygocythereis ceratoptera*, left valve external view, ×62, Kekova-Antalya, Station 99/12 m.
- Figure 12. *Xestoleberis communis*, left valve external view, ×83, Kaş-Antalya, Station 52/14 m.
- Figure 13. *Xestoleberis depressa*, right valve external view, Kuşadası, Station 24.
- Figure 14. *Xestoleberis dispar*, right valve external view, ×61, Kekova-Antalya, Station 94/24 m.
- Figure 15. *Macropyxis adriatica*, a. left valve internal view, Kuşadası, Station 19; b. Right valve external view Kuşadası, Station 6.
- Figure 16. *Pontocypris acuminata*, right valve external view, Kuşadası, Station 19.
- Figure 17. *Pontocypris mytiloides*, a. left valve external view, core Ayvalık 2c 2-4 cm;
b. Right valve external view, core Ayvalık 2c 24-26
- Figure 18. *Ekpontocypris pirifera*, right valve external view, core Ayvalık 2c 40-42 cm.
- Figure 19. *Heterocypris salina*, right valve external view, core Ayvalık 2c 30-32 cm.

PLATE III

