

Epigenetic Regulation and Therapeutic Potential of Gasdermin Genes in Colorectal Adenocarcinoma

Feyzanur Caldiran¹ , Rumeysa Senol¹ , Ercan Cacan¹ 

¹Department of Molecular Biology and Genetics, Faculty of Science and Art, Tokat Gaziosmanpaşa University, Tokat, Türkiye

ORCID ID: F.C. 0000-0001-7778-194X; R.S. 0009-0006-3227-6484, E.C. 0000-0002-3487-9493

Cite this article as: Caldiran F, Senol R, Cacan E. Epigenetic regulation and therapeutic potential of gasdermin genes in colorectal adenocarcinoma. *Experimed*. 2023; 13(3): 218-256.

ABSTRACT

Objective: Colorectal adenocarcinoma (COAD) is a complex and lethal cancer characterized by genetic mutations and epigenetic alterations. Gasdermin proteins, such as gasdermin C (GSDMC) and gasdermin D (GSDMD), play crucial roles in pyroptotic cell death, presenting these proteins as potential targets for diagnosis markers and therapy across various cancers, including COAD. Our study investigated the epigenetic regulation of *GSDMC* and *GSDMD* in COAD using bioinformatics and *in vitro* experiments.

Materials and Methods: This study examined the expression and epigenetic control of pyroptosis-related proteins in COAD using bioinformatics tools and databases such as TIMER2.0, UALCAN, EWAS Open Platform, Gene Set Cancer Analysis (GSCA), Receiver Operating Characteristic (ROC) plotter, and WANDERER. To investigate target gene expression, HTC-116 and SW620 cell lines were subjected to treatments with estrogen, a DNA methylation inhibitor (5-azacytidine), and a histone deacetylase inhibitor (vorinostat).

Results: The results showed that the expression of *GSDMC* and *GSDMD* varies based on the subtype of COAD. We established that these genes are regulated through DNA hypermethylation in the cg05316065 island for *GSDMC* and the cg10810860 island for *GSDMD*. Additionally, the identification of 5-fluorouracil, oxaliplatin, fluoropyrimidine monotherapy, and capecitabine as predictive biomarkers for *GSDMC* and *GSDMD* genes underscores the potential clinical utility in cancer therapy. Our results showed that a combined treatment involving 5-azacytidine, vorinostat, and estrogen increases the expression of these genes, potentially guiding cells toward pyroptosis.

Conclusions: This comprehensive analysis reveals the complex roles of *GSDMC* and *GSDMD* genes in cancer progression, showcasing their susceptibility to epigenetic regulation and impact on chemotherapy responses. These findings offer crucial insights into their significance as potential targets for diagnosis and therapy in cancer, thereby paving the way for personalized treatment strategies.

Keywords: Colorectal adenocarcinoma, gasdermin C, gasdermin D, epigenetic regulation, vorinostat, 5-azacytidine

INTRODUCTION

Colorectal adenocarcinoma (COAD) stands as the third leading cause of cancer-related morbidity and mortality globally (1). Understanding the complex molecular mechanisms steering the initiation, progression, and therapeutic resistance to therapy in COAD is crucial for enhancing diagnostic and therapeutic approaches. Recent research has increasingly focused on understanding the molecular mechanisms of COAD pathogenesis, aiming to identify novel therapeutic targets and diagnostic biomarkers.

Epigenetic mechanisms, including chromosome remodeling, DNA methylation, non-coding RNAs, and histone modifications, play crucial roles in tumor initiation, advancement, and progression by influencing gene expression. Their dysregulation is a hallmark of the disease (2,3). In COAD, DNA hypermethylation commonly occurs, particularly within the promoter regions of tumor suppressor genes among COAD patients (4). This hypermethylation effectively silences essential tumor suppressor genes, promoting cancer development and progression in many cases (2-4). Likewise, histone modifications significantly impact COAD formation.

Corresponding Author: Ercan Cacan **E-mail:** ercan.cacan@gop.edu.tr

Submitted: 10.10.2023 **Revision Requested:** 13.11.2023 **Last Revision Received:** 21.11.2023 **Accepted:** 23.11.2023



Content of this journal is licensed under a Creative Commons Attribution-NonCommercial 4.0 International License.

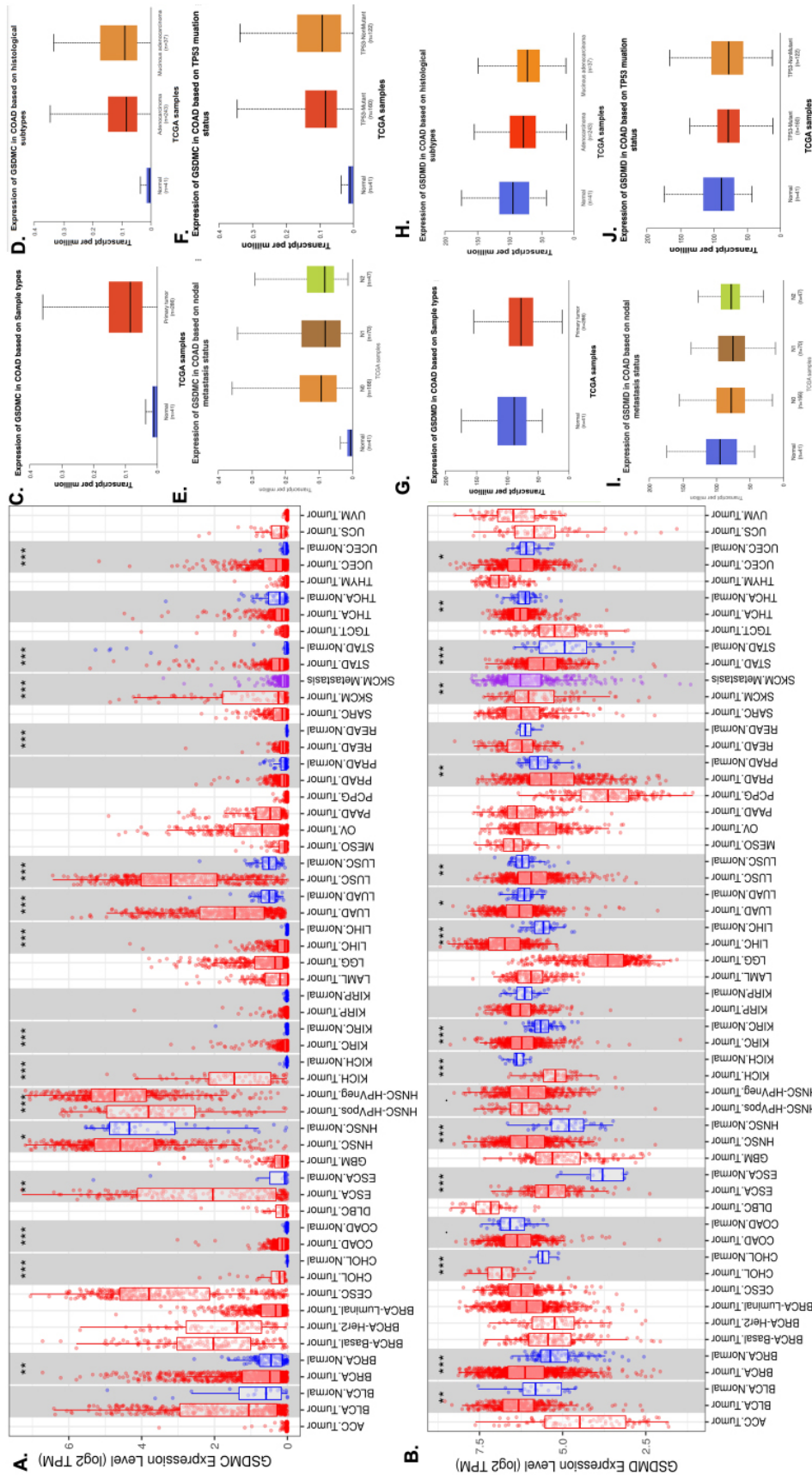


Figure 1. Pan-Cancer analysis of genes expressing gasdermin proteins C and D (*GSDMC* and *GSDMD*) in all cancer types. (A) Relative *GSDMC* expression in tumor and normal tissues. (B) Relative *GSDMD* expression in tumor and normal tissues. (C) *GSDMC* expression of colorectal adenocarcinoma (COAD) based on tumor and normal tissues. (D) *GSDMC* expression of COAD based on histological subtypes. (E) *GSDMC* expression of COAD based on nodal metastasis status. (F) *GSDMC* expression of COAD based on TP53 mutation. (G) *GSDMD* expression of COAD based on tumor and normal tissues. (H) *GSDMD* expression of COAD based on histological subtypes. (I) *GSDMD* expression of COAD based on nodal metastasis status. (J) *GSDMD* expression of COAD based on TP53 mutation. The *GSDMC* and *GSDMD* expression in cancer (red box) and normal (blue box) tissues from TIMER. Box plots were visualized using UALCAN. *** represents a significant difference at $p < 0.01$.

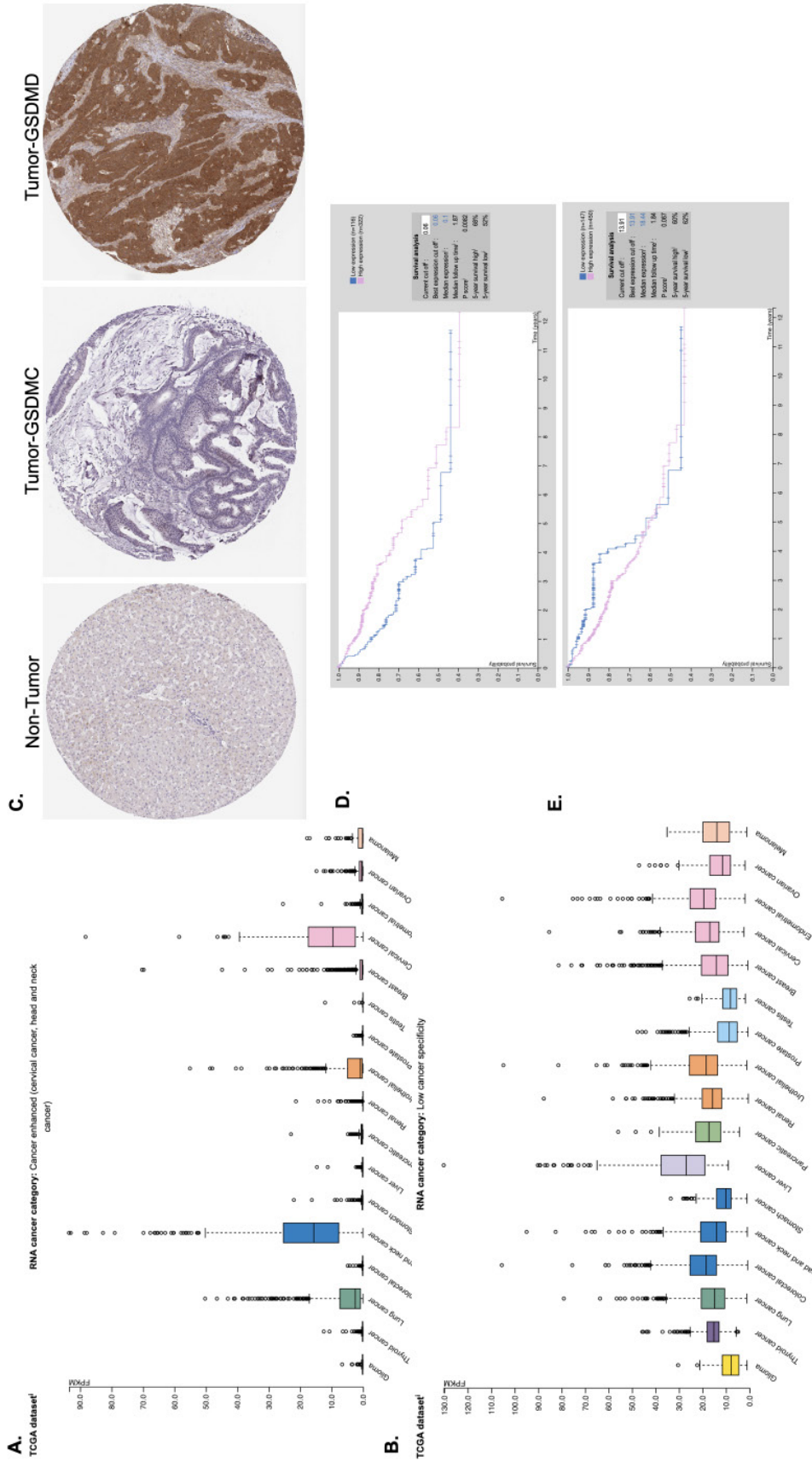


Figure 2. Proteomics analyses of *GSDMC* and *GSDMD* in COAD. (A) Comparison of *GSDMC* and *GSDMD* protein expression across various tumor types. (B) Comparison of *GSDMC* protein expression across various tumor types. (C) Representative immunohistochemistry images of *GSDMC* and *GSDMD* protein expression in high- and low-grade normal and COAD tissues. (D) Correlation between survival outcomes and *GSDMC* protein expression in COAD. (E) Correlation between survival outcomes and *GSDMD* protein expression in COAD. All analyses were conducted and visualized using the Human Protein Atlas.

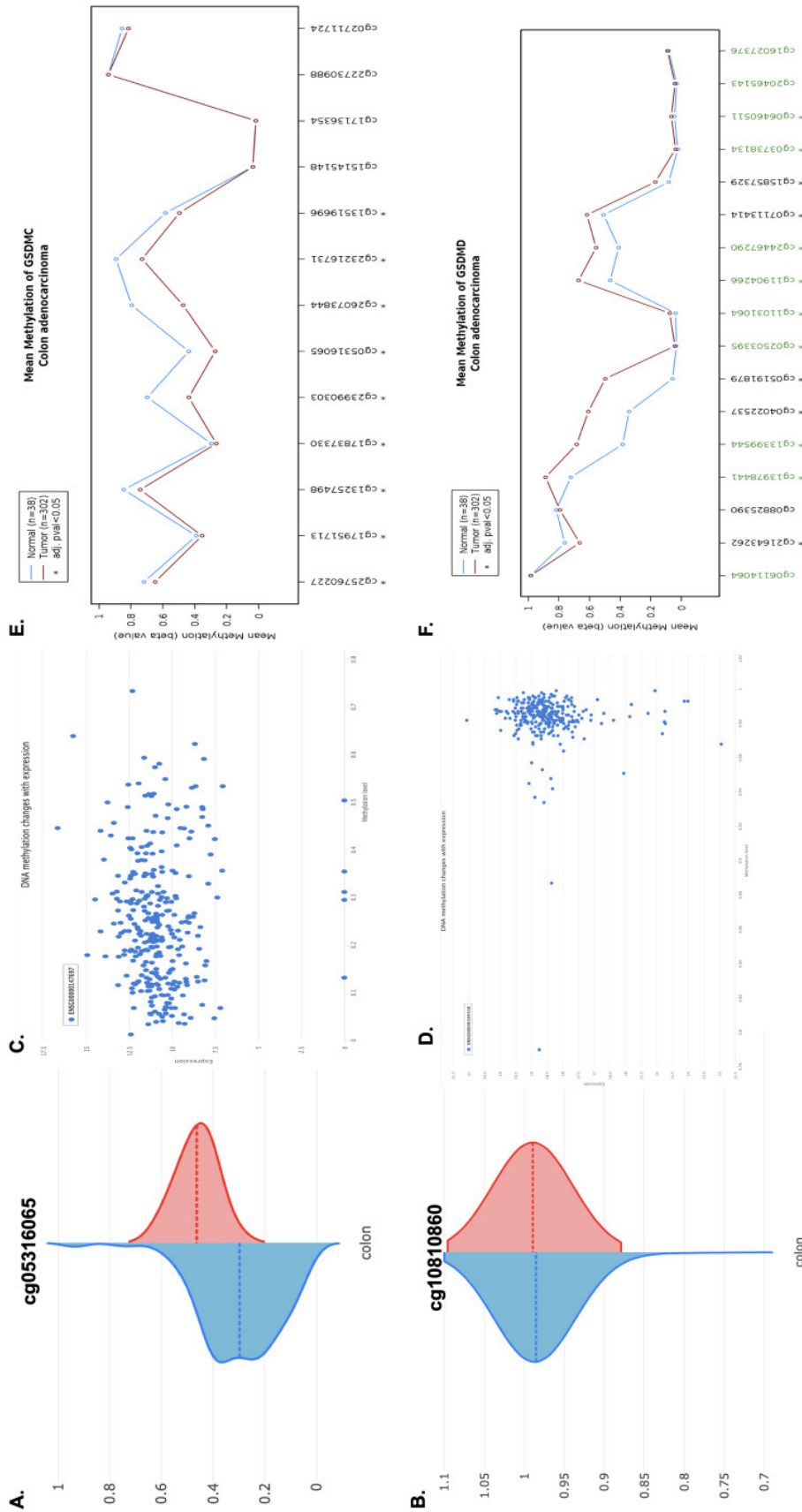


Figure 3. DNA methylation profiles of genes expressing *GSDMC* and *GSDMD* in COAD. (A) Comparison of the most methylated CpG site of *GSDMC* in COAD. (B) Comparison of the most methylated CpG site of *GSDMD* in COAD. (C) Relationship between *GSDMC* hypermethylation and gene expression. (D) Relationship between *GSDMD* hypermethylation and gene expression. (E) Comparison of methylated CpG islands of *GSDMC* in normal and tumor tissues. (F) Comparison of methylated CpG islands of *GSDMD* in normal and tumor tissues.

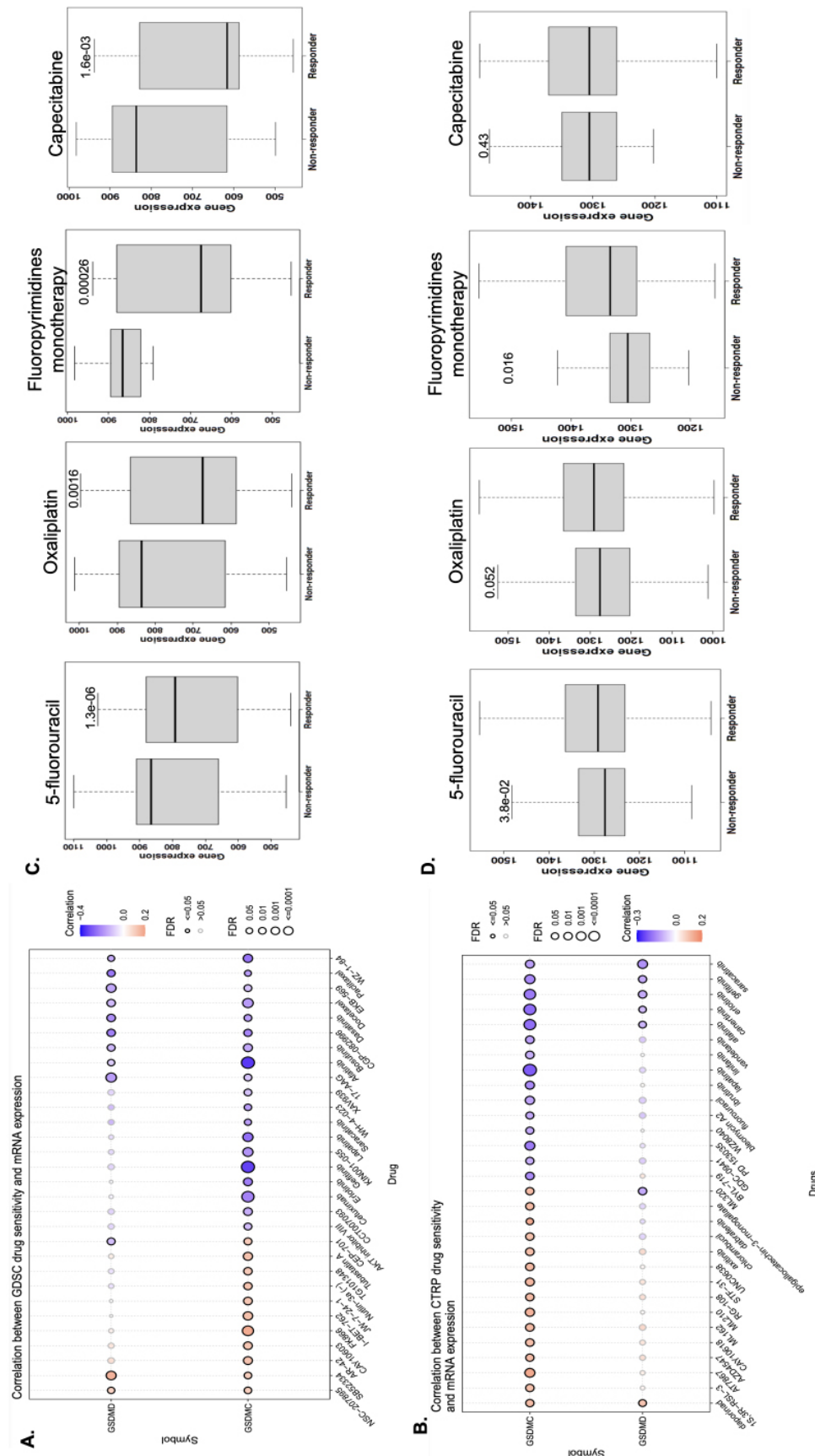


Figure 4. Analysis of drug sensitivity. (A, B) Correlation between Drug Sensitivity Genomics and Cancer Therapeutics Response Portal by Gene Set Cancer Analysis of GSDMC and GSDMD genes for drug sensitivity. (C) Differences in drug sensitivity between non-responder and responder groups of patients based on the GSDMC gene. (D) Differences in drug sensitivity between non-responder and responder groups of patients based on the GSDMD gene.

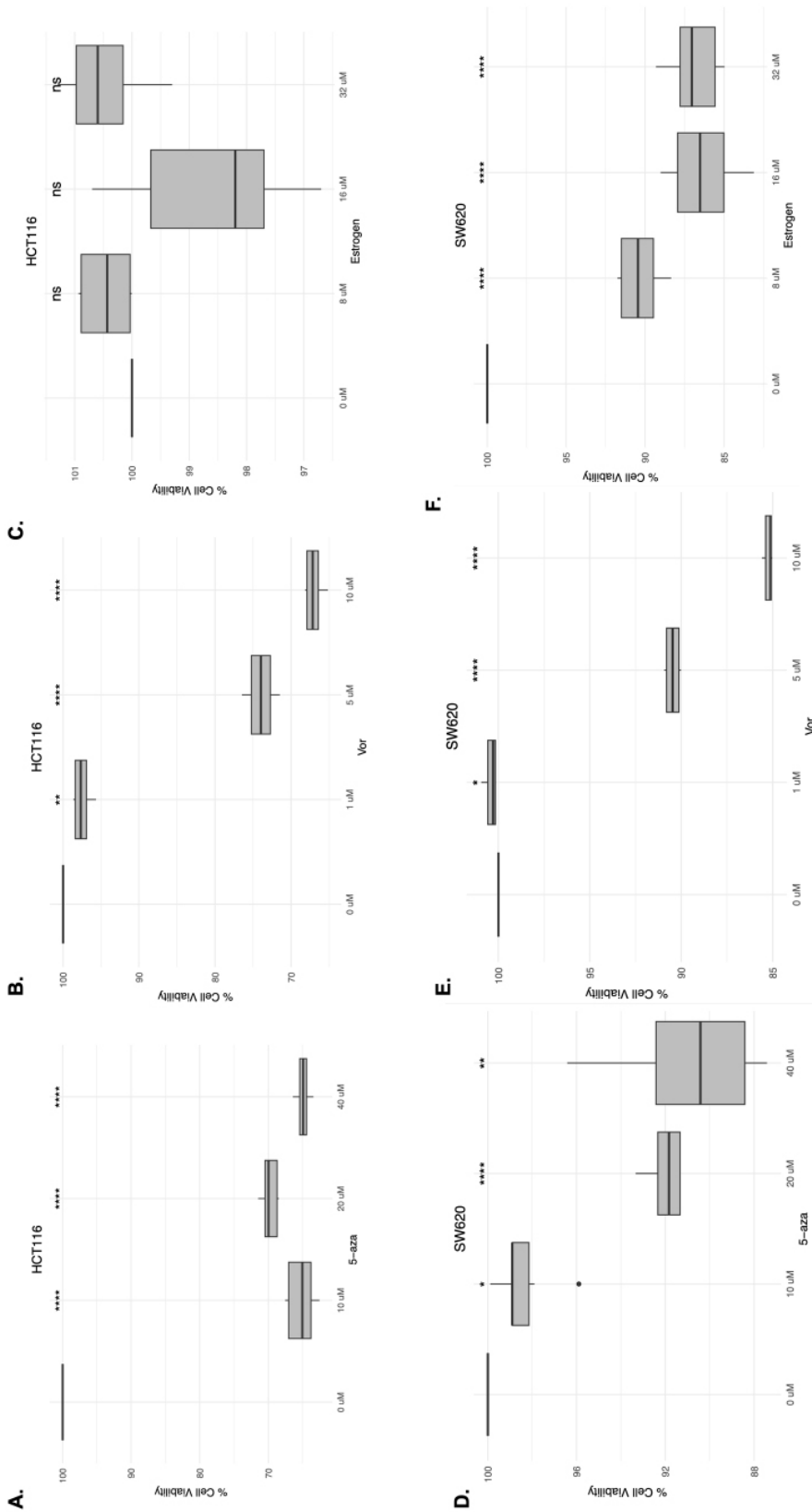


Figure 5. Cell viability assay (A) The effect of 5-azacytidine in HCT116 cells. (B) The effect of vorinostat in HCT116 cells. (C) The effect of estrogen in HCT116 cells. (D) The effect of 5-azacytidine in SW620 cells. (E) The effect of vorinostat in SW620 cells. (F) The effect of estrogen in SW620 cells. Independent experiments values symbolized the mean \pm standard error of the mean; *****, $p \leq 0.0001$, **, $p \leq 0.01$, *, $p \leq 0.05$.

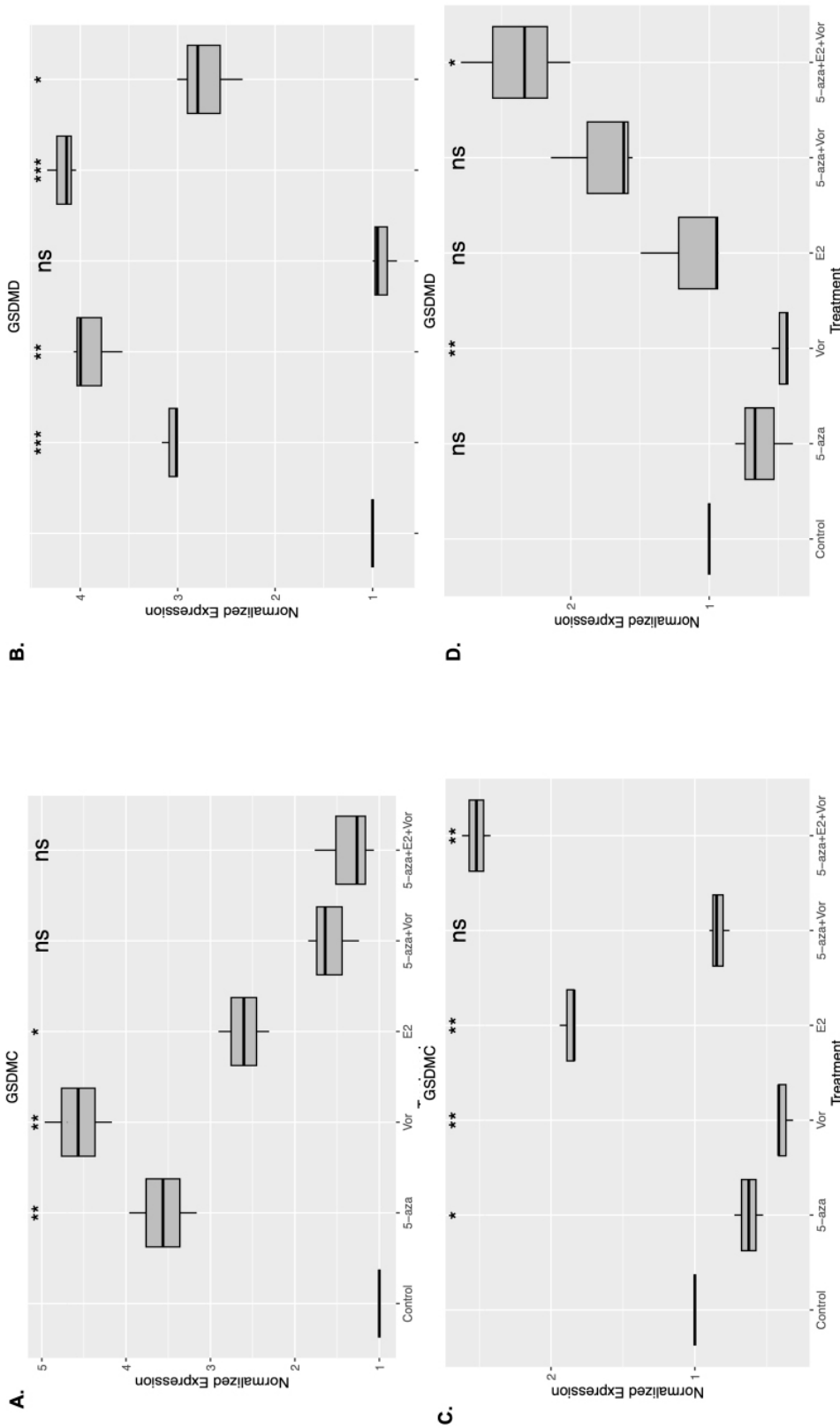


Figure 6. The effect of epigenetic drugs on genes expressing *GSDMC* and *GSDMD* in colorectal adenocarcinoma. (A) The differential expression profiles of *GSDMC* in HCT116 after treatment with 5-azacytidine, vorinostat, and estrogen alone or their combined treatment (B) The differential expression profiles of *GSDMD* in HCT116 after treatment with 5-azacytidine, vorinostat, and estrogen alone or their combined treatment (C) The differential expression profiles of *GSDMC* in SW620 after treatment with 5-azacytidine, vorinostat, and estrogen alone or their combined treatment (D) The differential expression profiles of *GSDMD* in SW620 after treatment with 5-azacytidine, vorinostat, and estrogen alone or their combined treatment. Independent experiments values symbolized the mean \pm standard error of the mean; ****: $p \leq 0.0001$, ***: $p \leq 0.01$, *: $p \leq 0.05$.

Abnormalities in histone modifications can alter chromatin structure and accessibility, influencing the expression of crucial genes involved in cell proliferation and tumor suppression (5). Estrogens exert influential effects on cancer initiation and progression within hormone-regulated tissues such as the ovaries, endometrium, and breast (6-8). Orzolek et al. reported that while estrogen enhances the growth and development of estrogen-dependent cancers like breast and ovarian cancer, it exhibits a protective effect in some other cancers owing to its anti-inflammatory properties (6). Studies have reported that specific estrogen-dependent epigenetic mechanisms influence tissue gene regulation (9). However, comprehensive knowledge regarding estrogen's effects on individual cancer types and its precise regulation of epigenetic mechanisms remains limited.

Gasdermin proteins are fundamental regulators involved in crucial cellular life and death processes, prominently functioning in inflammatory cell death pyroptosis which is linked to immune responses and inflammation, a highly regulated type of cell death. Dysregulation of gasdermin proteins has been related with cancer initiation, therapy resistance, and progression (10-12). Specifically, within the gasdermin protein family, gasdermin C (GSDMC) and gasdermin D (GSDMD) are recognized for their pivotal roles in pyroptosis (13). Therefore, investigating the expression, regulation, and epigenetic modifications of *GSDMC* and *GSDMD* in COAD holds considerable promise in unraveling the intricacies of colorectal tumorigenesis and may uncover potential therapeutic avenues.

In this study, our primary aim was to investigate the expression profiles of *GSDMC* and *GSDMD* proteins belonging to the gasdermin family within COAD and to understand how epigenetic modifications impact the disease's progression. To achieve this, we initially explored the mRNA transcript and protein expressions of *GSDMC* and *GSDMD* genes across various cancer types. We simultaneously analyzed their methylation status, specifically in COAD, using various bioinformatics tools and databases such as Timer2.0, UALCAN, EWAS Open Platform, GSCA, Receiver Operating Characteristic (ROC) plotter, and WANDERER. Moreover, we investigated the effects of treatments with DNA methylation inhibitor (5-azacytidine), histone deacetylase (HDAC) inhibitor vorinostat, and estrogen on the expression of *GSDMC* and *GSDMD*. Our research sheds light on the mechanisms underlying COAD pathogenesis, exploring the potential involvement of alterations in *GSDMC* and *GSDMD* genes in the disease's progression. Our objective is to develop novel therapeutic strategies and diagnostic markers for COAD.

MATERIALS AND METHODS

Data Acquisition

Differential Gene and Protein Expression Analysis

The Timer2.0 (<http://timer.cistrome.org/>) online tool was employed to examine the distinct expression profiles of *GSDMC*

and *GSDMD* across various cancer types (14). This tool utilizes RNA sequencing data sourced from The Cancer Genome Atlas (TCGA) and GETx, allowing for comparisons of differential expressions between tumor and normal tissues. The normal tissue data undergo simultaneous log2 transformation, with statistical significance set at $p < 0.05$. For the analysis of *GSDMC* and *GSDMD* genes concerning stage, grade, and histotype, the UALCAN tool was utilized (15). The criteria specified in this study were: "Gene: *GSDMC* and *GSDMD*"; "Cancer Type: Colorectal Cancer"; "Data Type: TCGA dataset." Furthermore, to determine the expression of *GSDMC* and *GSDMD* at the Human Protein Atlas (HPA) was utilized (16).

Methylation Analysis

We investigated the association between *GSDMC* and *GSDMD* methylation and their expression status utilizing the EWAS Open Platform (17), a database encompassing DNA methylation sequence data and metadata. This platform allowed us to explore the relationship between DNA methylation at specific CpG islands and the expression data of *GSDMC* and *GSDMD* in COAD using the WANDERER database (18).

Drug Sensitivity Analysis

We used GSCA to establish the correlation between the Drug Sensitivity Genomics (GDSC) and the Cancer Therapeutics Response Portal (CTRP) of *GSDMC* and *GSDMD* proteins in COAD. This analysis aimed to explore the drug sensitivity of the 30 most effective drugs across various cancers (19). Utilizing the ROC plotter (20), we assessed the capability to correlate gene expression with the response to treatment using transcriptome-level data from patients with COAD.

Cell Viability

To assess the impact of drugs on cell viability, we performed the 3-(4,5-dimethylthiazol-2-yl)-2,5-diphenyltetrazolium bromide (MTT) assay. HCT-116 and SW620 cells were seeded into 96-well plates at a density of 7,500 cells per well and cultured overnight. Following incubation, 100 μ l of MTT reagent was added to each well, and the cells were further incubated for approximately 2 h. Subsequently, 100 μ l of dissolution solution (dimethyl sulfoxide) was added to each well. Absorbance was measured at 540 nm and 570 nm (Thermo Fischer Scientific, USA), and % cell viability was calculated.

mRNA Expression Analysis

The effects of 5-azacytidine (Sigma-Aldrich, USA), (20 μ l/mL), vorinostat (Abcam, USA), (10 μ l/mL), and estrogen (Sigma-Aldrich, USA), (32 μ g/mL) drugs on *GSDMC* and *GSDMD* gene expression were assessed using the HCT-116 and SW620 COAD cell lines. Initially, RNA isolation was conducted utilizing TRIZOL (Invitrogen, California). Following the quantification of cell concentrations, 10 ng/ μ L of RNA sample was used in each reaction. The One-Step Reverse Transcription-Polymerase Chain Reaction (RT-PCR)

Kit (New England Biolabs, USA) and the Roche Light Cycler 480 (Roche, Switzerland) were used for the RT-PCR reaction.

Statistical Analyses

The Shapiro–Wilk test and was employed to assess the normal distribution of study groups, and Student’s t-test used for determining statistical significance when comparing control and treatment groups. Visualization and statistical analysis were conducted using the R program. Two-tailed p-values are represented in the figures and tables as follows: (*: $p \leq 0.05$; **: $p \leq 0.01$, ***: $p \leq 0.001$).

RESULTS

Pan-cancer View of GSDMC and GSDMD Methylation Level

Our analysis revealed elevated transcript expression levels of *GSDMC* and *GSDMD* in tumors compared to normal tissues across various cancer cohorts from TCGA. Statistically significant differences between tumor and normal tissues were observed in both genes in several cancer types, including breast cancer (BRCA), uterine corpus endometrial carcinoma (UCEC), cholangiocarcinoma (CHOL), lung adenocarcinoma (LUAD), head and neck squamous cell carcinoma (HNSC), kidney renal clear cell carcinoma (KIRC), liver hepatocellular carcinoma (LIHC), lung squamous cell carcinoma (LUSC), kidney chromophobe carcinoma (KIPAN), stomach adenocarcinoma (STAD), and esophageal cancer (ESCA) cohorts. Specifically, *GSDMC* exhibited high expression in COAD and skin cutaneous melanoma (SKCM) tumor cohorts, whereas *GSDMD* showed elevated expression in urothelial bladder cancer (BLCA), prostate adenocarcinoma (PRAD) and thyroid cancer (THCA) cohorts (all p-values < 0.05) (Figure 1A-1B). In addition, using the UALCAN database, we determined the protein expression of *GSDMC* and *GSDMD* in normal and cancer tissues of COAD, considering subtypes, metastasis status, and P53 mutations. As a result, we observed an increase in *GSDMC* protein expression in tumor tissues, particularly in mucinous adenocarcinoma, and found that metastasis status and P53 mutations were associated with elevated protein levels (Figure 1C-F). For the *GSDMD* protein, a decreasing expression trend was observed across each condition (Figure 1G-J). All expression values can be found in Supp. Table 1-2.

GSDMC and GSDMD Show Different Expression Profiles Based on Cancer Types

To compare the expression profiles of *GSDMC* and *GSDMD* in tumor tissues, we utilized the HPA database. Our analysis revealed that *GSDMC* exhibited the most differential expression in cervical and head–neck cancer (Figure 2A). However, unlike *GSDMC*, *GSDMD* showed varying expression profiles across different cancer types without showing any specific expression pattern in a particular cancer (Figure 2B). To validate these results, we conducted an analysis of *GSDMC* and *GSDMD* protein expression in clinical specimens from the HPA database. This indicated a strong and positive expression of *GSDMD* in COAD

samples, whereas *GSDMC* exhibited weaker expression levels in COAD tissues (Figure 2C). We also examined the effect of the expression of these relevant proteins on survival, and found that their high expression was associated with lower survival rates (Figure 2D-2E).

Pan-cancer View of GSDMC and GSDMD Methylation Level

We used the EWAS and WANDERER bioinformatics tools to examine the methylation profiles of the *GSDMC* and *GSDMD* genes in COAD. Specifically, four CpG islands within *GSDMC* displayed high methylation levels in COAD, which include cg05316065, cg23990303, cg24243265, and cg26073844 (Supp. Table 3). In contrast, *GSDMD* exhibited 33 CpG islands with detailed methylation information available in Suppl. Table 4. When we compared the methylation levels between COAD and normal colon tissue, we found higher methylation levels for *GSDMC*, specifically in tumor tissues compared with normal tissues. *GSDMD* displayed methylation in both tumor and normal tissues (Figure 3A-3B). Further examination into the expression and methylation of these genes in COAD revealed distinct patterns. An inverse relationship was observed between the expression and methylation of *GSDMC*, while *GSDMD* showed a linear association (Figure 3C-3D). The mean methylation analysis highlighted distinctive patterns for *GSDMC* and *GSDMD* genes in COAD. Hypomethylation was more pronounced in specific islands such as cg05316065, cg23990303, cg24243265, cg26073844, cg23990303, cg05316065, cg26073844, cg23216731, and cg13519696 within the *GSDMC* gene in normal tissues. For the *GSDMD* gene, higher hypomethylation was evident in tumor tissues across CpG islands (cg21643262, cg13978441, cg13399544, cg04022537, cg05191879, cg11904266, cg24467290, and cg07113414) (Figure 3E-3F).

Drug Sensitivity of GSDMC and GSDMD Gene Expressions

The GSCALite database was used to analyze the association between *GSDMC* and *GSDMD* model genes and drug sensitivity (GSDC and CTRP). In addition, validation of predictive chemotherapy biomarkers was performed using transcriptomic data from COAD patients in the ROC plotter database. The results revealed that the drug sensitivity of the *GSDMC* gene exhibited a negative correlation with 19 drugs and a positive correlation with 11 drugs. In comparison, *GSDMD* drug sensitivity displayed a negative correlation with 10 drugs and a positive correlation with two drugs, as observed in the GSDC database (Figure 4A). Detailed expression values are provided in Supp. Table 5. Furthermore, analysis using the CTRP database unveiled associations where the drug sensitivity of the *GSDMC* gene showed negative and positive correlations with 15 drugs (Supp. Table 6). *GSDMD* sensitivity showed a negative correlation with six drugs and a positive correlation with daporinad (Figure 4B). According to our ROC analyses, we identified four predictive chemotherapy biomarkers,

including 5-fluorouracil, oxaliplatin, fluoropyrimidines monotherapy, and capecitabine that indicate druggable *GSDMC* genes overexpressed and *GSDMD* downregulated among nonresponding patients (Figure 4C-4D).

The Effect of Epigenetic Drugs for *GSDMC* and *GSDMD* Expression in COAD

Based on our bioinformatics analysis, we determined that methylation plays a notable role in regulating the *GSDMC* and *GSDMD* genes in COAD. To confirm this, we conducted experiments using two COAD cell lines, HCT116 and SW620, to assess the effect of epigenetic drugs, 5-azacytidine and vorinostat, on these genes. Initially, we evaluated the effects of different drugs on cell survival to determine appropriate concentrations for subsequent experiments. Lower doses of these drugs did not dramatically decrease cell viability. However, higher doses of 5-azacytidine and vorinostat treatments reduced cell viability in HCT116 and SW620 cell lines (Figure 5). Subsequently, we examined the effects of these drugs on the expression of *GSDMC* and *GSDMD* in these cell lines. Our observations indicated that treatments involving single or combined applications of 5-azacytidine and vorinostat led to increased expression of these relevant genes compared to the control, and estrogen exhibited a promoting effect on gene expression in both cell lines (Figure 6).

DISCUSSION

COAD is a highly prevalent and fatal cancer originating from the epithelial cells of the colon and rectum. The interplay between genetic mutations and epigenetic alterations significantly contributes to the initiation and progression of COAD (1-3). Recent studies have highlighted the involvement of *GSDM* proteins in COAD, emphasizing their potential as diagnostic indicators, and targets for therapeutic interventions.

The *GSDM* family, encompassing *GSDMA*, *GSDMB*, *GSDMC*, *GSDMD*, *GSDME*, and *GSDMF*, has been identified for its role in cell death linked to inflammation, particularly pyroptosis, and its regulation of cancer cell proliferation, invasion, and metastasis (21). Within the vast array of genes implicated in cancer biology, gasdermins, specifically *GSDMC* and *GSDMD*, have emerged as substantial attention due to their roles in cellular death pathways, inflammation, and potential as targets for diagnosis and therapy. Previous studies have highlighted the elevated expression of *GSDMC* and *GSDMD* in COAD. This increased expression may be associated with the inactivation of signaling pathways due to mutations like the adenomatous polyposis coli (*APC*) gene or inflammatory microenvironment, affecting the progression of COAD, SKCM, and ESCA cancer progression (21-23). Similarly, Cui et al., have showed that elevated *GSDMC* is linked to low survival rates (24). A recent study suggested that increased *GSDMD* expression in serious ovarian cancer might be counterbalanced by increased apoptotic caspase activity (25). In this study, our initial analysis delved into the expression trend of *GSDMC* and *GSDMD* across

various cancer types. The consistently observed increased RNA expression of *GSDMC* and *GSDMD* across diverse cancer types, particularly in comparison with the COAD subtypes and is known for its unique pathological features. The higher expression of *GSDMC* in this subtype may suggest a specific role for this protein in mucinous COAD biology. In contrast, the reduced expression of *GSDMD* in COAD might indicate a potential mechanism employed by cancer cells to evade pyroptosis, thereby promoting cell survival.

COAD, a complex malignancy, is intricately driven by genetic and epigenetic alterations. Research indicates that DNA methylation, non-coding RNAs, and alterations in histone modifications play pivotal roles in regulating *GSDM* proteins within COAD. Altered histone modification patterns in the *GSDME* gene locus might contribute to its dysregulated expression, potentially affecting cancer cell survival and proliferation. Hypermethylation, resulting in the transcriptional silencing of *GSDME*, may contribute to COAD progression by impacting cell death pathways and inducing pyroptosis, a specific form of programmed cell death (26, 27). Moreover, hypermethylation in the *GSDMC* promoter region has been associated with decreased *GSDMC* expression, potentially promoting tumorigenesis by affecting cell death and proliferation pathways in HCC. Studies on gene methylation have been associated with low gene expression in most tumors, and this correlation is most pronounced in *GSDMB*, *GSDMD*, and *GSDME* (22, 28). In this study, we observed the distinct methylation patterns of *GSDMC* and *GSDMD* in COAD. The inverse relationship between *GSDMC* expression and methylation levels suggests that hypomethylation may drive *GSDMC* upregulation in tumors. Conversely, the linear association observed with *GSDMD* indicates a more complex regulatory mechanism. Within the *GSDMC* gene, four CpG islands, namely cg05316065, cg23990303, cg24243265, and cg26073844, exhibited notable high methylation levels. This suggests that increased methylation occurs in *GSDMC* within COAD tissues, potentially leading to its downregulation. In contrast, the *GSDMD* gene showed methylation alterations across 33 CpG islands. Interestingly, tumor and normal tissues exhibited increased methylation levels in the *GSDMD* gene. This observation suggests that *GSDMD* may have a more complex methylation regulation pattern in COAD.

Analyzing drug sensitivity linked to *GSDMC* and *GSDMD* offers crucial insights into potential therapeutic interventions. The correlations observed both negative and positive with specific drugs in various databases (GDSC and CTRP) suggest that the expression levels of these genes might influence the chemotherapy response. Identification of predictive biomarkers such as 5-fluorouracil, oxaliplatin, fluoropyrimidine monotherapy, and capecitabine underscores the clinical relevance of targeting *GSDMC* and *GSDMD* for personalized cancer treatment. Gasdermin proteins play a pivotal role in pyroptosis that is essential for the antitumor activity of chemotherapeutic drugs. Studies have showed that lower *GSDME* expression in retinoblastoma cells increases resistance

to chemotherapeutic drugs, while decitabine application increases sensitivity by directing cells toward pyroptosis (29). Decitabine treatment has shown to upregulate *GSDMD* in murine bladder tumors and breast cancer, activating NLRP3 inflammasome and caspase-1 proteins (10). Chidamide, a HDAC inhibitor, has been observed to enhance *GSDMD* expression in laryngeal HN8 cancer cells (30). Estrogen known for its anti-inflammatory activities, is considered a cancer-protective hormone. However, the precise mechanisms underlying its synergistic effect remain unclear. To better understand this relationship, we investigated whether the combined impact of 5-azacytidine, vorinostat, and estrogen synergistically influences COAD HCT116 and SW620 cells. Our findings revealed an increase in the expression of both *GSDMC* and *GSDMD* following the combined treatment. This experimental validation of epigenetic regulation by 5-azacytidine and vorinostat on *GSDMC* and *GSDMD* expression in COAD cell lines reinforces the potential therapeutic implications of targeting these genes. The ability to modulate gene expression through epigenetic mechanisms suggests that epigenetic therapies in controlling *GSDMC* and *GSDMD* levels in cancer cells. However, further research is required to optimize these approaches for clinical application.

CONCLUSION

In conclusion, despite several studies indicated changes in *GSDMC* and *GSDMD* expression in associated cancers, the underlying mechanisms and functional implications remain inadequately understood. This comprehensive analysis of *GSDMC* and *GSDMD* across various cancers provides valuable insights into their multifaceted roles within cancer biology. These genes exhibit complex expression patterns, associations with patient survival, epigenetic regulatory mechanisms, and potential implications for chemotherapy response.

Acknowledgments: The authors would like to thank Caglar Berkel for his assistance.

Ethics Committee Approval: All data on patients were retrieved from the public database and commercial cell lines were used in in vitro experiments. Therefore, ethics committee approval is not required.

Informed Consent: Because the study was designed retrospectively, no written informed consent form was obtained from patients.

Peer-review: Externally peer-reviewed.

Authorship Contributions: Idea/Concept- E.C.; Design- E.C., R.S. Analysis and/or Interpretation- F.C., R.S.; Writing the Article- F.C., E.C.; Critical Review- E.C.; References and Fundings- E.C., R.S.

Conflict of Interest: The authors declare that they have no conflict of interest.

Financial Disclosure: The research was supported by the TUBITAK 2209-A (1919B012209018).

REFERENCES

1. Rawla P, Sunkara T, Barsouk A. Epidemiology of colorectal cancer: incidence, mortality, survival, and risk factors. *Prz Gastroenterol* 2019; 14(2): 89-103.
2. Caldiran FY, Cacan E. RGS10 suppression by DNA methylation is associated with low survival rates in colorectal carcinoma. *Pathol Res Pract* 2022; 236: 154007.
3. Bardhan K, Liu K. Epigenetics and colorectal cancer pathogenesis. *Cancers (Basel)* 2013; 5(2): 676-713.
4. Ashktorab H, Brim H. DNA methylation and colorectal cancer. *Curr Colorectal Cancer Rep* 2014; 10(4): 425-30.
5. Park J, Lee K, Kim K, Yi SJ. The role of histone modifications: from neurodevelopment to neurodegenerative diseases. *Signal Transduct Target Ther* 2022; 7(1): 217.
6. Orzolek I, Sobieraj J, Domagała-Kulawik J. Estrogens, cancer and immunity. *Cancers* 2022; 14(9): 2265.
7. Božović A, Mandušić V, Todorović L, Krajnović M. Estrogen Receptor Beta: The promising biomarker and potential target in metastases. *Int J Mol Sci* 2021; 22(4): 1656.
8. Berkel C, Cacan E. Estrogen- and estrogen receptor (ER)-mediated cisplatin chemoresistance in cancer. *Life Sci* 2021; 286:20029.
9. Fortress AM, Frick KM. Epigenetic regulation of estrogen-dependent memory. *Front Neuroendocrinol* 2014; 35(4): 530-49.
10. El-Gamal R, Abdelrahim M, El-Sherbiny M, Enan ET, El-Nablaway M. Gasdermin D: A potential mediator and prognostic marker of bladder cancer. *Front Mol Biosci* 2022; 9: 972087.
11. Tanaka S, Orita H, Kataoka T, Miyazaki M, Saeki H, Wada R, et al. Gasdermin D represses inflammation-induced colon cancer development by regulating apoptosis. *Carcinogenesis* 2023; 44(4): 341-9.
12. Yang X, Tang Z. Role of gasdermin family proteins in cancers. *Int J Oncol* 2023; 63(3): 100.
13. Slafova M, Karakaya T, Di Filippo M, Hennig P, Beer HD. The gasdermins: a pore-forming protein family expressed in the epidermis. *Front Immunol* 2023; 14: 1254150.
14. Li T, Fu J, Zeng Z, Cohen D, Li J, Chen Q, et al. TIMER2.0 for analysis of tumor-infiltrating immune cells. *Nucleic Acids Res* 2020; 48(W1): W509-14.
15. Chandrashekar DS, Bashel B, Balasubramanya SAH, Creighton CJ, Ponce-Rodriguez I, Chakravarthi BVSK, et al. UALCAN: A Portal for facilitating tumor subgroup gene expression and survival analyses. *Neoplasia* 2017; 19(8): 649-58.
16. Thul PJ, Lindskog C. The human protein atlas: a spatial map of the human proteome. *Protein Sci* 2018; 27(1): 233-44.
17. Xiong Z, Yang F, Li M, Ma Y, Zhao W, Wang G, et al. EWAS Open Platform: integrated data, knowledge and toolkit for epigenome-wide association study. *Nucleic Acids Res* 2022; 50(D1): D1004-9.
18. Diez-Villanueva A, Mallona I, Peinado MA (). Wanderer, an interactive viewer to explore DNA methylation and gene expression data in human cancer. *Epigenetics Chromatin* 2015; 8: 22.
19. Liu CJ, Hu FF, Xie GY, Miao YR, Li XW, Zeng Y, et al. GSCA: an integrated platform for gene set cancer analysis at genomic, pharmacogenomic and immunogenomic levels. *Brief Bioinform* 2023; 24(1): bbac558.
20. Fekete JT, Györfy B. ROCplot.org: validating predictive biomarkers of chemotherapy/hormonal therapy/anti-HER2 therapy using transcriptomic data of 3,104 breast cancer patients. *Int J Cancer* 2019; 145(11): 3140-51.
21. Zou J, Zheng Y, Huang Y, Tang D, Kang R, Chen R. The versatile gasdermin family: their function and roles in diseases. *Front Immunol* 2021; 12: 751533.

22. Feng S, Fox D, Man SM. Mechanisms of gasdermin family members in inflammasome signaling and cell death. *J Mol Biol* 2018; 430(18 Pt B): 3068-3080.
23. Miguchi M, Hinoi T, Shimomura M, Adachi T, Saito Y, Niitsu H, et al. Gasdermin C is upregulated by inactivation of transforming growth factor β receptor type II in the presence of mutated Apc, promoting colorectal cancer proliferation. *PLoS One* 2016; 11(11): e0166422.
24. Wang J, Kang Y, Li Y, Sun L, Zhang J, Qian S, et al. Gasdermin D in different subcellular locations predicts diverse progression, immune microenvironment and prognosis in colorectal cancer. *J Inflamm Res* 2021; 14: 6223-35
25. Berkel C, Cacan E. Differential expression and copy number variation of gasdermin (GSDM) family members, pore-forming proteins in pyroptosis, in normal and malignant serous ovarian tissue. *Inflammation* 2021; 44(6): 2203-16.
26. Li F, Xia Q, Ren L, Nie Y, Ren H, Guo X, et al. GSDME Increases chemotherapeutic drug sensitivity by inducing pyroptosis in retinoblastoma cells. *Oxid Med Cell Longev* 2022; 2022: 2371807.
27. Kim MS, Chang X, Yamashita K, Nagpal JK, Baek JH, Wu G, et al. Aberrant promoter methylation and tumor suppressive activity of the DFNA5 gene in colorectal carcinoma. *Oncogene* 2008; 27(25): 3624-34.
28. Wang YY, Shi LY, Xu MH, Jing Y, Sun CC, Yang JH, et al. A pan-cancer analysis of the expression of gasdermin genes in tumors and their relationship with the immune microenvironment. *Transl Cancer Res* 2021; 10(9): 4125-47.
29. Niu Q, Liu Y, Zheng Y, Tang Z, Qian Y, Qi R, et al. Co-delivery of nigericin and decitabine using hexahistidine-metal nanocarriers for pyroptosis-induced immunotherapeutics. *Acta Pharm Sin B* 2022; 12(12): 4458-71.
30. Zhao S, Guo J, Zhao Y, Fei C, Zheng Q, Li X, et al. Chidamide, a novel histone deacetylase inhibitor, inhibits the viability of MDS and AML cells by suppressing JAK2/STAT3 signaling. *Am J Transl Res* 2016; 8(7): 3169-78.

Supp. Table 1. Expression profile of *GSDMC* in different states of COAD.

Comparison	Statistical significance
Normal-vs-Primary	5.34780000283064E-08
Normal-vs-Stage1	9.91039994513443E-09
Normal-vs-Stage2	2.136800E-03
Normal-vs-Stage3	2.17460049967144E-10
Normal-vs-Stage4	8.031500E-04
Stage1-vs-Stage2	8.040200E-02
Stage1-vs-Stage3	1.648000E-01
Stage1-vs-Stage4	9.752000E-01
Stage2-vs-Stage3	1.918760E-01
Stage2-vs-Stage4	9.690300E-02
Stage3-vs-Stage4	3.320600E-01
Normal-vs-Adenocarcinoma	6.44320000020571E-07
Normal-vs-Mucinous-adenocarcinoma	3.128200E-02
Adenocarcinoma-vs-Mucinous-adenocarcinoma	3.500600E-01
Normal-vs-N0	1.823400E-04
Normal-vs-N1	2.39859999640046E-08
Normal-vs-N2	1.5830399999972E-05
N0-vs-N1	1.974230E-01
N0-vs-N2	2.694000E-01
N1-vs-N2	8.279400E-01
Normal-vs-TP53-Mutant	6.6130999998304E-07
Normal-vs-TP53-NonMutant	1.538110E-03
TP53-Mutant-vs-TP53-NonMutant	4.524400E-01

Supp. Table 2. Expression profile of *GSDMD* in different states of COAD.

Comparison	Statistical significance
Normal-vs-Primary	1.128610E-01
Normal-vs-Stage1	5.232600E-01
Normal-vs-Stage2	8.552000E-02
Normal-vs-Stage3	8.592100E-02
Normal-vs-Stage4	1.197410E-01
Stage1-vs-Stage2	3.274800E-01
Stage1-vs-Stage3	3.423000E-01
Stage1-vs-Stage4	4.184400E-01
Stage2-vs-Stage3	9.860400E-01
Stage2-vs-Stage4	9.782600E-01
Stage3-vs-Stage4	9.892800E-01
Normal-vs-Adenocarcinoma	9.300100E-02
Normal-vs-Mucinous-adenocarcinoma	2.419200E-01
Adenocarcinoma-vs-Mucinous-adenocarcinoma	9.114800E-01
Normal-vs-N0	1.679450E-01
Normal-vs-N1	6.463700E-02
Normal-vs-N2	1.255550E-01
N0-vs-N1	5.538800E-01
N0-vs-N2	7.460800E-01
N1-vs-N2	8.626200E-01
Normal-vs-TP53-Mutant	9.317900E-02
Normal-vs-TP53-NonMutant	2.013800E-01
TP53-Mutant-vs-TP53-NonMutant	7.081200E-01

Supp. Table 3. Pan-cancer view of *GSDMC* methylation level.

Probe ID	Basic Information	TS (Hyper)	TS (Hypo)	Cor(age)	Sex difference score	Ancestry (Hyper)	Ancestry (Hypo)
cg06114064	Location:chr8 144643111CpG Island: ShelfRelated Gene: GSDMD	0.0374474	0.77484	'-0.0211308	0.00234468	0.00189862	0.100095
cg07422279	Location:chr8 144635610CpG Island: ShelfRelated Gene: GSDMD	0.514985	0.0250342	0.0297773	0.00506567	0.114331	0.00852036
cg09317036	Location:chr8 144635547CpG Island: ShelfRelated Gene: GSDMD	0.467426	0.0167713	'-0.0385934	0.00647206	0.463982	0.0139364
cg10810860	Location:chr8 144639591CpG Island: ShelfRelated Gene: GSDMD	0.00771833	0.702204	0.13324	0.00127997	0.00391243	0.22768
cg12686110	Location:chr8 144635478CpG Island: ShelfRelated Gene: GSDMD	0.593581	0.012455	0.0134863	0.00353016	0.101371	0.00548918
cg18198896	Location:chr8 144635361CpG Island: ShelfRelated Gene: GSDMD	0.435809	0.0162049	'-0.00513337	0.00336136	0.171192	0.00810995
cg22995724	Location:chr8 144639363CpG Island: ShelfRelated Gene: GSDMD	0.0688239	0.543099	0.215856	0.00843402	0.160886	0.21223
cg23101464	Location:chr8 144640755CpG Island: IslandRelated Gene: GSDMD	0.645494	0.059545	0.268305	'-0.0134696	0.0697682	0.0136725
cg24493971	Location:chr8 144636113CpG Island: ShoreRelated Gene: GSDMD	0.717722	0.0444969	0.256837	0.0033797	0.36247	0.0217715
cg01088723	Location:chr8 144635861CpG Island: ShelfRelated Gene: GSDMD	0.749041	0.0217855	0.15455	0.00056777	0.153523	0.00921932
cg01134012	Location:chr8 144635316CpG Island: ShelfRelated Gene: GSDMD	0.625397	0.0160124	'-0.0529944	0.00358376	0.33056	0.0211275
cg03367493	Location:chr8 144642094CpG Island: ShoreRelated Gene: GSDMD	0.114451	0.598116	0.0380313	0.0131626	0.0448131	0.169078
cg06043315	Location:chr8 144640306CpG Island: ShoreRelated Gene: GSDMD	0.710383	0.176105	0.254368	'-0.00455408	0.0671723	0.0021351
cg06553843	Location:chr8 144642649CpG Island: ShoreRelated Gene: GSDMD	0.0587956	0.609967	0.0681331	0.00795896	0.04254	0.144907
cg08688335	Location:chr8 144635260CpG Island: ShelfRelated Gene: GSDMD	0.49512	0.0153854	'-0.0931951	'-0.000569483	0.376794	0.018253
cg10074813	Location:chr8 144637872CpG Island: ShoreRelated Gene: GSDMD	0.0507524	0.573654	0.0977066	0.0058875	0.0345586	0.218893
cg10675725	Location:chr8 144640310CpG Island: ShoreRelated Gene: GSDMD	0.753294	0.0841625	0.263813	'-0.00887712	0.111956	0.00526692
cg14721632	Location:chr8 144635430CpG Island: ShelfRelated Gene: GSDMD	0.700252	0.0175525	'-0.0204295	0.00991591	0.296632	0.0157026
cg15172061	Location:chr8 144638852CpG Island: ShelfRelated Gene: GSDMD	0.133221	0.600146	0.189963	'-0.000784746	0.264629	0.237025
cg15541193	Location:chr8 144635496CpG Island: ShelfRelated Gene: GSDMD	0.794542	0.012069	'-0.0562418	0.00542389	0.184801	0.00277694
cg16563151	Location:chr8 144640403CpG Island: IslandRelated Gene: GSDMD	0.744569	0.021425	0.246606	'-0.00509359	0.186283	0.00799428
cg17812120	Location:chr8 144639478CpG Island: ShelfRelated Gene: GSDMD	0.026755	0.470268	0.160148	0.0110324	0.06736	0.471315
cg18145080	Location:chr8 144640397CpG Island: IslandRelated Gene: GSDMD	0.763803	0.0402844	0.303255	'-0.00736297	0.140413	0.00502442

cg19661369	Location:chr8 144636025CpG Island: IslandRelated Gene: GSDMD	0.878188	0.0473552	0.281871	0.000720407	0.209593	0.00551592
cg20387272	Location:chr8 144640401CpG Island: IslandRelated Gene: GSDMD	0.800644	0.0168213	0.230224	'-0.00664629	0.135887	0.00368115
cg20583945	Location:chr8 144636462CpG Island: ShoreRelated Gene: GSDMD	0.352968	0.30731	0.204754	'-0.00394652	0.408965	0.174377
cg22012530	Location:chr8 144635309CpG Island: ShelfRelated Gene: GSDMD	0.656191	0.0208012	0.000218964	0.0031179	0.488271	0.0228124
cg22312904	Location:chr8 144639260CpG Island: ShelfRelated Gene: GSDMD	0.112199	0.446264	0.156057	'-0.00169094	0.297525	0.228638
cg22687097	Location:chr8 144640556CpG Island: IslandRelated Gene: GSDMD	0.608017	0.0181856	0.213544	'-0.0072603	0.186328	0.00745327
cg23090207	Location:chr8 144635444CpG Island: ShelfRelated Gene: GSDMD	0.792752	0.0141682	0.0158456	0.00809795	0.313986	0.0074909
cg25245261	Location:chr8 144640507CpG Island: IslandRelated Gene: GSDMD	0.860492	0.0219079	0.262442	'-0.00622538	0.138365	0.00353555
cg26173173	Location:chr8 144642813CpG Island: ShelfRelated Gene: GSDMD	0.064414	0.589783	'-0.00489139	0.00311126	0.024572	0.0986943
cg26711732	Location:chr8 144640378CpG Island: ShoreRelated Gene: GSDMD	0.873112	0.0437411	0.245965	'-0.00382704	0.27076	0.00383456

Supp. Table 4. Pan-cancer view of *GSDMD* methylation level.

Probe ID	Basic Information	TS (Hyper)	TS (Hypo)	Cor(age)	Sex difference score	Ancestry (Hyper)	Ancestry (Hypo)
cg06114064	Location:chr8 144643111CpG Island: ShelfRelated Gene: GSDMD	0.0374474	0.77484	'-0.0211308	0.00234468	0.00189862	0.100095
cg07422279	Location:chr8 144635610CpG Island: ShelfRelated Gene: GSDMD	0.514985	0.0250342	0.0297773	0.00506567	0.114331	0.00852036
cg09317036	Location:chr8 144635547CpG Island: ShelfRelated Gene: GSDMD	0.467426	0.0167713	'-0.0385934	0.00647206	0.463982	0.0139364
cg10810860	Location:chr8 144639591CpG Island: ShelfRelated Gene: GSDMD	0.00771833	0.702204	0.13324	0.00127997	0.00391243	0.22768
cg12686110	Location:chr8 144635478CpG Island: ShelfRelated Gene: GSDMD	0.593581	0.012455	0.0134863	0.00353016	0.101371	0.00548918
cg18198896	Location:chr8 144635361CpG Island: ShelfRelated Gene: GSDMD	0.435809	0.0162049	'-0.00513337	0.00336136	0.171192	0.00810995
cg22995724	Location:chr8 144639363CpG Island: ShelfRelated Gene: GSDMD	0.0688239	0.543099	0.215856	0.00843402	0.160886	0.21223
cg23101464	Location:chr8 144640755CpG Island: IslandRelated Gene: GSDMD	0.645494	0.059545	0.268305	'-0.0134696	0.0697682	0.0136725
cg24493971	Location:chr8 144636113CpG Island: ShoreRelated Gene: GSDMD	0.717722	0.0444969	0.256837	0.0033797	0.36247	0.0217715

cg01088723	Location:chr8 144635861CpG Island: ShelfRelated Gene: GSDMD	0.749041	0.0217855	0.15455	0.00056777	0.153523	0.00921932
cg01134012	Location:chr8 144635316CpG Island: ShelfRelated Gene: GSDMD	0.625397	0.0160124	'-0.0529944	0.00358376	0.33056	0.0211275
cg03367493	Location:chr8 144642094CpG Island: ShoreRelated Gene: GSDMD	0.114451	0.598116	0.0380313	0.0131626	0.0448131	0.169078
cg06043315	Location:chr8 144640306CpG Island: ShoreRelated Gene: GSDMD	0.710383	0.176105	0.254368	'-0.00455408	0.0671723	0.0021351
cg06553843	Location:chr8 144642649CpG Island: ShoreRelated Gene: GSDMD	0.0587956	0.609967	0.0681331	0.00795896	0.04254	0.144907
cg08688335	Location:chr8 144635260CpG Island: ShelfRelated Gene: GSDMD	0.49512	0.0153854	'-0.0931951	'-0.000569483	0.376794	0.018253
cg10074813	Location:chr8 144637872CpG Island: ShoreRelated Gene: GSDMD	0.0507524	0.573654	0.0977066	0.0058875	0.0345586	0.218893
cg10675725	Location:chr8 144640310CpG Island: ShoreRelated Gene: GSDMD	0.753294	0.0841625	0.263813	'-0.00887712	0.111956	0.00526692
cg14721632	Location:chr8 144635430CpG Island: ShelfRelated Gene: GSDMD	0.700252	0.0175525	'-0.0204295	0.00991591	0.296632	0.0157026
cg15172061	Location:chr8 144638852CpG Island: ShelfRelated Gene: GSDMD	0.133221	0.600146	0.189963	'-0.000784746	0.264629	0.237025
cg15541193	Location:chr8 144635496CpG Island: ShelfRelated Gene: GSDMD	0.794542	0.012069	'-0.0562418	0.00542389	0.184801	0.00277694
cg16563151	Location:chr8 144640403CpG Island: IslandRelated Gene: GSDMD	0.744569	0.021425	0.246606	'-0.00509359	0.186283	0.00799428
cg17812120	Location:chr8 144639478CpG Island: ShelfRelated Gene: GSDMD	0.026755	0.470268	0.160148	0.0110324	0.06736	0.471315
cg18145080	Location:chr8 144640397CpG Island: IslandRelated Gene: GSDMD	0.763803	0.0402844	0.303255	'-0.00736297	0.140413	0.00502442
cg19661369	Location:chr8 144636025CpG Island: IslandRelated Gene: GSDMD	0.878188	0.0473552	0.281871	0.000720407	0.209593	0.00551592
cg20387272	Location:chr8 144640401CpG Island: IslandRelated Gene: GSDMD	0.800644	0.0168213	0.230224	'-0.00664629	0.135887	0.00368115
cg20583945	Location:chr8 144636462CpG Island: ShoreRelated Gene: GSDMD	0.352968	0.30731	0.204754	'-0.00394652	0.408965	0.174377
cg22012530	Location:chr8 144635309CpG Island: ShelfRelated Gene: GSDMD	0.656191	0.0208012	0.000218964	0.0031179	0.488271	0.0228124
cg22312904	Location:chr8 144639260CpG Island: ShelfRelated Gene: GSDMD	0.112199	0.446264	0.156057	'-0.00169094	0.297525	0.228638

cg22687097	Location:chr8 144640556CpG Island: IslandRelated Gene: GSDMD	0.608017	0.0181856	0.213544	'-0.0072603	0.186328	0.00745327
cg23090207	Location:chr8 144635444CpG Island: ShelfRelated Gene: GSDMD	0.792752	0.0141682	0.0158456	0.00809795	0.313986	0.0074909
cg25245261	Location:chr8 144640507CpG Island: IslandRelated Gene: GSDMD	0.860492	0.0219079	0.262442	'-0.00622538	0.138365	0.00353555
cg26173173	Location:chr8 144642813CpG Island: ShelfRelated Gene: GSDMD	0.064414	0.589783	'-0.00489139	0.00311126	0.024572	0.0986943
cg26711732	Location:chr8 144640378CpG Island: ShoreRelated Gene: GSDMD	0.873112	0.0437411	0.245965	'-0.00382704	0.27076	0.00383456

Supp. Table 5. Drug sensitivity of *GSDMC* gene expression.

symbol	drug	cor	fd	entrez
GSDMC	(5Z)-7-Oxozeaenol	0.069177881	0.084690764	56169
GSDMC	17-AAG	-0.103282381	0.0052149	56169
GSDMC	5-Fluorouracil	0.074694505	0.04167749	56169
GSDMC	681640	-0.073758149	0.192458667	56169
GSDMC	A-443654	-0.074396887	0.633968354	56169
GSDMC	A-770041	-0.133979411	0.054258484	56169
GSDMC	AC220	0.043906205	0.363024941	56169
GSDMC	AG-014699	0.027226293	0.55607265	56169
GSDMC	AICAR	-0.088457542	0.023708092	56169
GSDMC	AKT inhibitor VIII	-0.117162884	0.004669143	56169
GSDMC	AMG-706	0.013189918	0.86448356	56169
GSDMC	AP-24534	0.055968966	0.17895025	56169
GSDMC	AR-42	0.127048926	0.000316472	56169
GSDMC	AS601245	-0.057208292	0.271940572	56169
GSDMC	AS605240	-0.0247857	0.60536041	56169
GSDMC	AT-7519	-0.041962054	0.261575287	56169
GSDMC	ATRA	0.043184051	0.38966865	56169
GSDMC	AUY922	-0.009428857	0.892581226	56169
GSDMC	AZ628	-0.007215655	0.942681217	56169
GSDMC	AZD6482	0.020574409	0.710704886	56169
GSDMC	AZD7762	0.050210853	0.226172194	56169
GSDMC	AZD8055	0.051385184	0.205160191	56169
GSDMC	Afatinib	-0.342222453	1.20655E-25	56169
GSDMC	Axitinib	0.049851833	0.338210328	56169
GSDMC	BAY 61-3606	0.078248566	0.051277447	56169
GSDMC	BEZ235	0.029337791	0.583019922	56169
GSDMC	BHG712	0.092860354	0.009884426	56169
GSDMC	BI-2536	-0.097359325	0.294265093	56169
GSDMC	BIRB 0796	-0.05612209	0.265643715	56169
GSDMC	BIX02189	0.081945406	0.024716366	56169
GSDMC	BMS-509744	-0.05008853	0.603068169	56169
GSDMC	BMS-536924	-0.012431806	0.894673152	56169
GSDMC	BMS-708163	-0.058557447	0.146223364	56169
GSDMC	BMS-754807	0.019723474	0.757641451	56169
GSDMC	BMS345541	0.039158174	0.29964016	56169
GSDMC	BX-795	0.058667789	0.19151629	56169
GSDMC	BX-912	0.105307964	0.002849731	56169
GSDMC	Belinostat	0.081594699	0.027976749	56169
GSDMC	Bexarotene	-0.014276935	0.885969368	56169
GSDMC	Bicalutamide	-0.068570844	0.110145999	56169
GSDMC	Bleomycin	-0.003108074	0.969324033	56169
GSDMC	Bleomycin (50 uM)	-0.071787523	0.049115033	56169
GSDMC	Bortezomib	-0.037782796	0.675253379	56169
GSDMC	Bosutinib	-0.151329552	0.000301515	56169
GSDMC	Bryostatin 1	-0.021538405	0.719187573	56169
GSDMC	CAL-101	0.073236952	0.051357598	56169

GSDMC	CAY10603	0.121558321	0.00057392	56169
GSDMC	CCT007093	-0.13917973	0.000458052	56169
GSDMC	CCT018159	-0.044061933	0.396090531	56169
GSDMC	CEP-701	0.112265562	0.003769352	56169
GSDMC	CGP-082996	-0.21194048	0.002169578	56169
GSDMC	CGP-60474	-0.069614726	0.408488132	56169
GSDMC	CH5424802	0.025764461	0.700896579	56169
GSDMC	CHIR-99021	0.078899128	0.035832694	56169
GSDMC	CI-1040	-0.052333791	0.237184633	56169
GSDMC	CMK	-0.038301001	0.771535593	56169
GSDMC	CP466722	0.071110773	0.049692577	56169
GSDMC	CP724714	-0.058855368	0.246676333	56169
GSDMC	CUDC-101	0.017440664	0.670964818	56169
GSDMC	CX-5461	0.094484539	0.009199597	56169
GSDMC	Camptothecin	0.044762786	0.324331966	56169
GSDMC	Cetuximab	-0.216848592	4.35192E-09	56169
GSDMC	Cisplatin	-0.00229786	0.972368543	56169
GSDMC	Crizotinib	-0.019067494	0.921664695	56169
GSDMC	Cyclopamine	-0.005118417	0.97122667	56169
GSDMC	Cytarabine	0.04942153	0.327233377	56169
GSDMC	DMOG	-0.004944803	0.93408696	56169
GSDMC	Dabrafenib	0.091439373	0.023617516	56169
GSDMC	Dasatinib	-0.167282042	0.00611565	56169
GSDMC	Docetaxel	-0.172002804	2.3512E-06	56169
GSDMC	Doxorubicin	-0.046565081	0.460251197	56169
GSDMC	EHT 1864	0.038117583	0.577117789	56169
GSDMC	EKB-569	-0.105327637	0.005624563	56169
GSDMC	EX-527	0.015633189	0.905565414	56169
GSDMC	Elesclomol	-0.008955754	0.867021159	56169
GSDMC	Embelin	-0.029785444	0.647567201	56169
GSDMC	Epothilone B	-0.095964312	0.036765258	56169
GSDMC	Erlotinib	-0.224642916	0.000372051	56169
GSDMC	Etoposide	-0.000538445	0.993984476	56169
GSDMC	FH535	-0.032149105	0.537146119	56169
GSDMC	FK866	0.178424189	3.26028E-07	56169
GSDMC	FMK	-0.000266865	0.997458122	56169
GSDMC	FR-180204	-0.030004467	0.600490204	56169
GSDMC	FTI-277	-0.045252923	0.290317849	56169
GSDMC	Foretinib	0.052351935	0.208691901	56169
GSDMC	GDC0449	-0.035450193	0.730174639	56169
GSDMC	GDC0941	-0.016362285	0.811815355	56169
GSDMC	GNF-2	-0.092410175	0.621785417	56169
GSDMC	GSK-650394	-0.029306523	0.717021372	56169
GSDMC	GSK1070916	0.072954569	0.049284583	56169
GSDMC	GSK1904529A	-0.054821494	0.227273744	56169
GSDMC	GSK2126458	0.024773856	0.544478955	56169
GSDMC	GSK269962A	0.11482028	0.005326045	56169
GSDMC	GSK429286A	0.112375392	0.003245044	56169
GSDMC	GSK690693	0.062613402	0.094955466	56169
GSDMC	GW 441756	-0.016579829	0.956700088	56169
GSDMC	GW-2580	0.006715733	0.994893052	56169
GSDMC	GW843682X	-0.082596014	0.325806834	56169
GSDMC	Gefitinib	-0.330523365	8.86219E-21	56169
GSDMC	Gemcitabine	-0.02141163	0.703519549	56169
GSDMC	Genentech Cpd 10	0.078221411	0.03351634	56169
GSDMC	HG-5-113-01	0.012904926	0.889233531	56169
GSDMC	HG-5-88-01	-0.009769323	0.965832495	56169
GSDMC	HG-6-64-1	0.028875818	0.584522186	56169
GSDMC	I-BET-762	0.136599292	0.000076122	56169
GSDMC	IOX2	-0.050498623	0.372198529	56169
GSDMC	IPA-3	0.086013043	0.0262819	56169
GSDMC	Imatinib	-0.103996773	0.33523806	56169
GSDMC	Ispinesib Mesylate	0.022393682	0.57723524	56169
GSDMC	JNJ-26854165	-0.040923037	0.433704269	56169
GSDMC	JNK Inhibitor VIII	-0.06233044	0.142269821	56169
GSDMC	JNK-9L	-0.024947385	0.697595415	56169
GSDMC	JQ1	-0.049694061	0.248312263	56169

GSDMC	JQ12	0.027570219	0.644814786	56169
GSDMC	JW-7-24-1	0.120514688	0.000620018	56169
GSDMC	JW-7-52-1	0.001241491	0.994079702	56169
GSDMC	KIN001-055	-0.185222791	0.000010173	56169
GSDMC	KIN001-102	0.034064664	0.367354285	56169
GSDMC	KIN001-135	0.015007426	0.914451871	56169
GSDMC	KIN001-236	0.058635567	0.119893648	56169
GSDMC	KIN001-244	0.07349435	0.046570732	56169
GSDMC	KIN001-260	0.112151903	0.001672363	56169
GSDMC	KIN001-266	0.003192552	0.957804257	56169
GSDMC	KIN001-270	0.068834973	0.078023782	56169
GSDMC	KU-55933	-0.021595223	0.76775706	56169
GSDMC	LAQ824	0.055191568	0.171262236	56169
GSDMC	LFM-A13	-0.00682146	0.916798324	56169
GSDMC	LY317615	-0.0221353	0.650988141	56169
GSDMC	Lapatinib	-0.252002598	8.85822E-06	56169
GSDMC	Lenalidomide	-0.046369114	0.521456826	56169
GSDMC	Linifanib	0.029169398	0.608654133	56169
GSDMC	Lisitinib	0.021830375	0.77274323	56169
GSDMC	MG-132	-0.025546858	0.817507815	56169
GSDMC	MK-2206	0.045281604	0.383544412	56169
GSDMC	MLN4924	-0.022903943	0.720335195	56169
GSDMC	MP470	0.089793869	0.03123236	56169
GSDMC	MPS-1-IN-1	0.063898308	0.093167652	56169
GSDMC	MS-275	0.038520713	0.677795981	56169
GSDMC	Masitinib	0.062428205	0.100387474	56169
GSDMC	Methotrexate	0.074454678	0.046732625	56169
GSDMC	Midostaurin	0.047631406	0.294082855	56169
GSDMC	Mitomycin C	-0.033123289	0.5469698	56169
GSDMC	NG-25	0.070975958	0.051222191	56169
GSDMC	NPK76-II-72-1	0.104308935	0.002917246	56169
GSDMC	NSC-207895	0.104134024	0.010039938	56169
GSDMC	NSC-87877	-0.005209443	0.945738907	56169
GSDMC	NU-7441	0.008140081	0.941835284	56169
GSDMC	Navitoclax	0.10491482	0.004477672	56169
GSDMC	Nilotinib	-0.00869939	0.89374551	56169
GSDMC	Nutlin-3a (-)	0.132366963	0.001367169	56169
GSDMC	OSI-027	0.112803259	0.001544507	56169
GSDMC	OSI-930	0.050688068	0.200874638	56169
GSDMC	OSU-03012	-0.016666664	0.775680655	56169
GSDMC	Obatoclax Mesylate	-0.018614544	0.735717479	56169
GSDMC	Olaparib	0.021412738	0.660034941	56169
GSDMC	PAC-1	0.049324091	0.251795151	56169
GSDMC	PD-0325901	-0.06328282	0.117179716	56169
GSDMC	PD-0332991	0.014862789	0.830972295	56169
GSDMC	PD-173074	0.058467163	0.645356471	56169
GSDMC	PF-4708671	0.003126195	0.986289464	56169
GSDMC	PF-562271	-0.056566764	0.295386987	56169
GSDMC	PFI-1	0.034444725	0.500597424	56169
GSDMC	PHA-665752	-0.022909038	0.893936411	56169
GSDMC	PHA-793887	0.060005585	0.095443364	56169
GSDMC	PI-103	0.091015776	0.011546661	56169
GSDMC	PIK-93	0.102188244	0.003703918	56169
GSDMC	PLX4720	0.046796688	0.266601049	56169
GSDMC	Paclitaxel	-0.170120354	0.033660886	56169
GSDMC	Parthenolide	0.028306941	0.817949004	56169
GSDMC	Pazopanib	0.084183881	0.084924643	56169
GSDMC	Phenformin	0.024103245	0.55094562	56169
GSDMC	Pyrimethamine	0.041082972	0.740457063	56169
GSDMC	QL-VIII-58	-0.07688153	0.27975435	56169
GSDMC	QL-X-138	0.088642892	0.015070642	56169
GSDMC	QL-XI-92	0.083941411	0.020237702	56169
GSDMC	QL-XII-47	0.027207881	0.530622169	56169
GSDMC	QL-XII-61	0.11273085	0.060262035	56169
GSDMC	QS11	0.032372435	0.627633528	56169
GSDMC	RDEA119	-0.045366926	0.238916324	56169
GSDMC	RO-3306	-0.10262823	0.011356718	56169

GSDMC	Rapamycin	-0.086204772	0.414771411	56169
GSDMC	Roscovitine	0.036043988	0.857267057	56169
GSDMC	Ruxolitinib	0.046042002	0.362425617	56169
GSDMC	S-Trityl-L-cysteine	-0.056017908	0.510130567	56169
GSDMC	SB 216763	-0.021694127	0.691408597	56169
GSDMC	SB 505124	0.062599398	0.353250708	56169
GSDMC	SB52334	0.106190913	0.008724581	56169
GSDMC	SB590885	0.033883807	0.51647526	56169
GSDMC	SGC0946	-0.015582665	0.811673233	56169
GSDMC	SL 0101-1	-0.092286705	0.204783264	56169
GSDMC	SN-38	0.015964216	0.761817825	56169
GSDMC	SNX-2112	0.076721591	0.036274458	56169
GSDMC	STF-62247	0.052306799	0.199807114	56169
GSDMC	Salubrinal	0.052479873	0.554458491	56169
GSDMC	Saracatinib	-0.167646847	0.021947041	56169
GSDMC	Shikonin	0.035423021	0.528517651	56169
GSDMC	Sorafenib	-0.051876311	0.65105927	56169
GSDMC	Sunitinib	-0.077940829	0.286309031	56169
GSDMC	T0901317	0.064166669	0.112651938	56169
GSDMC	TAE684	-0.023321419	0.872006388	56169
GSDMC	TAK-715	-0.003579623	0.933419813	56169
GSDMC	TG101348	0.114497964	0.001182882	56169
GSDMC	TGX221	0.056038975	0.404550529	56169
GSDMC	THZ-2-102-1	0.072409236	0.047450965	56169
GSDMC	THZ-2-49	0.070956678	0.055782528	56169
GSDMC	TL-1-85	0.085787688	0.017714098	56169
GSDMC	TL-2-105	0.045223151	0.241576285	56169
GSDMC	TPCA-1	0.096789704	0.006187972	56169
GSDMC	TW 37	0.092269011	0.025073002	56169
GSDMC	Talazoparib	0.02976649	0.540505079	56169
GSDMC	Tamoxifen	-0.005370816	0.973943647	56169
GSDMC	Temozolomide	-0.003528839	0.97375044	56169
GSDMC	Temsirolimus	0.034653221	0.512413682	56169
GSDMC	Thapsigargin	-0.015623845	0.853147444	56169
GSDMC	Tipifarnib	-0.013995033	0.871107355	56169
GSDMC	Tivozanib	0.025181425	0.700996864	56169
GSDMC	Trametinib	-0.080633897	0.030169636	56169
GSDMC	Tubastatin A	0.132984914	0.000148914	56169
GSDMC	UNC0638	0.097921233	0.005147354	56169
GSDMC	UNC1215	-0.021147235	0.715254584	56169
GSDMC	VNLG/124	0.038523883	0.375179458	56169
GSDMC	VX-11e	0.011420626	0.851214702	56169
GSDMC	VX-680	-0.064366945	0.492777659	56169
GSDMC	VX-702	0.013153808	0.962823102	56169
GSDMC	Veliparib	-0.004597957	0.961839737	56169
GSDMC	Vinblastine	-0.001939802	0.973855649	56169
GSDMC	Vinorelbine	-0.070540055	0.15968347	56169
GSDMC	Vorinostat	0.114893249	0.001592396	56169
GSDMC	WH-4-023	-0.169323648	0.010318182	56169
GSDMC	WZ-1-84	-0.242314662	0.000098011	56169
GSDMC	WZ3105	0.040057915	0.283185053	56169
GSDMC	XAV939	-0.104885716	0.005550174	56169
GSDMC	XL-184	0.011043481	0.848168365	56169
GSDMC	XMD11-85h	0.000512627	0.998087599	56169
GSDMC	XMD13-2	0.083488167	0.02039634	56169
GSDMC	XMD14-99	0.089594369	0.015920484	56169
GSDMC	XMD15-27	0.062226534	0.16850979	56169
GSDMC	XMD8-85	-0.067114201	0.416681568	56169
GSDMC	XMD8-92	0.038967075	0.738318542	56169
GSDMC	Y-39983	0.104126319	0.004317898	56169
GSDMC	YK 4-279	0.004940741	0.949347787	56169
GSDMC	YM155	-0.055937063	0.260193705	56169
GSDMC	YM201636	0.102557452	0.004480021	56169
GSDMC	Z-LLNle-CHO	-0.048028621	0.548072305	56169
GSDMC	ZG-10	0.068619177	0.294074471	56169
GSDMC	ZM-447439	0.044689273	0.348839076	56169
GSDMC	ZSTK474	0.04528178	0.229820447	56169

GSDMC	Zibotentan	-0.041618633	0.854928869	56169
GSDMC	piperlongumine	0.025209812	0.604075503	56169
GSDMC	rTRAIL	-0.029400762	0.715046015	56169
GSDMC	selumetinib	-0.019349259	0.643803954	56169
GSDMD	(5Z)-7-Oxozeaenol	-0.118553722	0.00165386	79792
GSDMD	17-AAG	-0.168003351	3.27999E-06	79792
GSDMD	5-Fluorouracil	-0.066149486	0.073415943	79792
GSDMD	681640	-0.065543013	0.25422892	79792
GSDMD	A-443654	-0.103125453	0.459737822	79792
GSDMD	A-770041	-0.118176266	0.097533814	79792
GSDMD	AC220	-0.038307353	0.442069575	79792
GSDMD	AG-014699	-0.002260154	0.967156762	79792
GSDMD	AICAR	-0.15640391	0.000033322	79792
GSDMD	AKT inhibitor VIII	-0.07151257	0.100989751	79792
GSDMD	AMG-706	-0.03145611	0.634394887	79792
GSDMD	AP-24534	-0.089497849	0.023698833	79792
GSDMD	AR-42	0.06958342	0.055244206	79792
GSDMD	AS601245	-0.110245906	0.014793251	79792
GSDMD	AS605240	-0.141125488	0.00022499	79792
GSDMD	AT-7519	-0.038289736	0.308303507	79792
GSDMD	ATRA	-0.062942051	0.180547407	79792
GSDMD	AUY922	-0.122833608	0.004532811	79792
GSDMD	AZ628	-0.211097	0.000613523	79792
GSDMD	AZD6482	-0.110785904	0.005334008	79792
GSDMD	AZD7762	-0.099863247	0.010409665	79792
GSDMD	AZD8055	-0.104935347	0.006447358	79792
GSDMD	Afatinib	-0.087621629	0.016347232	79792
GSDMD	Axitinib	0.001340534	0.986330717	79792
GSDMD	BAY 61-3606	-0.015479609	0.739597316	79792
GSDMD	BEZ235	-0.095289308	0.02922256	79792
GSDMD	BHG712	-0.04800719	0.2003648	79792
GSDMD	BI-2536	-0.179470155	0.034357786	79792
GSDMD	BIRB 0796	0.007316636	0.907803557	79792
GSDMD	BIX02189	-0.049823668	0.187305421	79792
GSDMD	BMS-509744	-0.116898649	0.165507524	79792
GSDMD	BMS-536924	-0.033440157	0.65190613	79792
GSDMD	BMS-708163	-0.069295684	0.081111103	79792
GSDMD	BMS-754807	0.068071224	0.182481	79792
GSDMD	BMS345541	0.019486571	0.623198321	79792
GSDMD	BX-795	-0.088529253	0.036553519	79792
GSDMD	BX-912	-0.01194123	0.763867649	79792
GSDMD	Belinostat	0.058459616	0.123227859	79792
GSDMD	Bexarotene	-0.109865487	0.032489126	79792
GSDMD	Bicalutamide	-0.018316057	0.720108202	79792
GSDMD	Bleomycin	-0.137286089	0.001956009	79792
GSDMD	Bleomycin (50 uM)	-0.087834951	0.014946819	79792
GSDMD	Bortezomib	-0.223561384	0.0003641	79792
GSDMD	Bosutinib	-0.122952047	0.004376024	79792
GSDMD	Bryostatin 1	-0.050153733	0.330502454	79792
GSDMD	CAL-101	-0.057657501	0.13275185	79792
GSDMD	CAY10603	0.054584412	0.137704742	79792
GSDMD	CCT007093	-0.074353836	0.075647372	79792
GSDMD	CCT018159	-0.12511526	0.004380581	79792
GSDMD	CEP-701	-0.111444922	0.004060733	79792
GSDMD	CGP-082996	-0.221899911	0.001332186	79792
GSDMD	CGP-60474	-0.218320459	0.000877892	79792
GSDMD	CH5424802	-0.088054503	0.068189963	79792
GSDMD	CHIR-99021	-0.017453488	0.685548723	79792
GSDMD	CI-1040	-0.147640868	0.000154565	79792
GSDMD	CMK	-0.047485782	0.703561076	79792
GSDMD	CP466722	-0.067637487	0.062781368	79792
GSDMD	CP724714	-0.003252436	0.966331686	79792
GSDMD	CUDC-101	0.006449533	0.879989101	79792
GSDMD	CX-5461	0.039689614	0.303624468	79792
GSDMD	Camptothecin	-0.077272731	0.066473623	79792
GSDMD	Cetuximab	-0.022545757	0.615697508	79792
GSDMD	Cisplatin	-0.016777865	0.775735519	79792

GSDMD	Crizotinib	-0.182022925	0.017040651	79792
GSDMD	Cyclopamine	-0.110672741	0.214415211	79792
GSDMD	Cytarabine	-0.061517462	0.205513181	79792
GSDMD	DMOG	-0.103285745	0.011468138	79792
GSDMD	Dabrafenib	-0.096794811	0.015825061	79792
GSDMD	Dasatinib	-0.197447732	0.000961111	79792
GSDMD	Docetaxel	-0.119154782	0.001265346	79792
GSDMD	Doxorubicin	-0.077782215	0.156090272	79792
GSDMD	EHT 1864	-0.002652157	0.978241691	79792
GSDMD	EKB-569	-0.15160946	0.000041203	79792
GSDMD	EX-527	0.014451865	0.913969088	79792
GSDMD	Elesclomol	-0.005590431	0.917497547	79792
GSDMD	Embelin	-0.089048191	0.070773817	79792
GSDMD	Epothilone B	-0.093674327	0.042601109	79792
GSDMD	Erlotinib	-0.013745071	0.872885888	79792
GSDMD	Etoposide	-0.066850778	0.136720489	79792
GSDMD	FH535	-0.095022507	0.026920682	79792
GSDMD	FK866	0.030922133	0.425166218	79792
GSDMD	FMK	-0.034724789	0.629470301	79792
GSDMD	FR-180204	-0.083128353	0.071365993	79792
GSDMD	FTI-277	-0.02423494	0.590941692	79792
GSDMD	Foretinib	0.015943965	0.74236615	79792
GSDMD	GDC0449	-0.035422591	0.730281614	79792
GSDMD	GDC0941	-0.065273315	0.198172591	79792
GSDMD	GNF-2	-0.167117752	0.078244149	79792
GSDMD	GSK-650394	-0.112460818	0.043491415	79792
GSDMD	GSK1070916	-0.009704804	0.817460648	79792
GSDMD	GSK1904529A	-0.011923591	0.829400457	79792
GSDMD	GSK2126458	-0.056050084	0.143175316	79792
GSDMD	GSK269962A	0.034271078	0.535536631	79792
GSDMD	GSK429286A	0.005739334	0.911266302	79792
GSDMD	GSK690693	0.013279122	0.750978334	79792
GSDMD	GW 441756	-0.05111534	0.754599717	79792
GSDMD	GW-2580	-0.031363675	0.94324124	79792
GSDMD	GW843682X	-0.172560058	0.018349173	79792
GSDMD	Gefitinib	-0.073309396	0.073400173	79792
GSDMD	Gemcitabine	-0.093313843	0.035481092	79792
GSDMD	Genentech Cpd 10	0.009386356	0.827620058	79792
GSDMD	HG-5-113-01	-0.014696334	0.870925562	79792
GSDMD	HG-5-88-01	-0.05299629	0.717963975	79792
GSDMD	HG-6-64-1	-0.124968461	0.002112996	79792
GSDMD	I-BET-762	-0.004422161	0.912708069	79792
GSDMD	IOX2	-0.003172603	0.970909262	79792
GSDMD	IPA-3	0.017297849	0.698535183	79792
GSDMD	Imatinib	-0.145931139	0.090279176	79792
GSDMD	Ispinesib Mesylate	-0.02364406	0.554683825	79792
GSDMD	JNJ-26854165	-0.12706901	0.003034678	79792
GSDMD	JNK Inhibitor VIII	-0.064346686	0.128326225	79792
GSDMD	JNK-9L	-0.096136645	0.042765621	79792
GSDMD	JQ1	-0.101728415	0.010488442	79792
GSDMD	JQ12	-0.059082514	0.256341431	79792
GSDMD	JW-7-24-1	-0.005874519	0.887900916	79792
GSDMD	JW-7-52-1	-0.195246841	0.006171132	79792
GSDMD	KIN001-055	-0.068668716	0.204368296	79792
GSDMD	KIN001-102	-0.058582121	0.10786541	79792
GSDMD	KIN001-135	0.088889408	0.344944166	79792
GSDMD	KIN001-236	-0.027406951	0.492629315	79792
GSDMD	KIN001-244	-0.036622627	0.345652017	79792
GSDMD	KIN001-260	-0.001247288	0.976357998	79792
GSDMD	KIN001-266	0.029072958	0.573499772	79792
GSDMD	KIN001-270	0.05574019	0.161617921	79792
GSDMD	KU-55933	-0.135568942	0.003469415	79792
GSDMD	LAQ824	-0.037699172	0.3668068	79792
GSDMD	LFM-A13	-0.031776698	0.56224323	79792
GSDMD	LY317615	-0.10273193	0.010529905	79792
GSDMD	Lapatinib	-0.060992296	0.349005369	79792
GSDMD	Lenalidomide	-0.067131609	0.291057938	79792

GSDMD	Linifanib	-0.094306912	0.030556214	79792
GSDMD	Lisitinib	0.101330316	0.0430144	79792
GSDMD	MG-132	-0.124641544	0.095129131	79792
GSDMD	MK-2206	-0.034064804	0.533859444	79792
GSDMD	MLN4924	-0.141591761	0.004126014	79792
GSDMD	MP470	0.061772304	0.148694635	79792
GSDMD	MPS-1-IN-1	0.03734066	0.347107304	79792
GSDMD	MS-275	-0.113499013	0.122587778	79792
GSDMD	Masitinib	-0.041830376	0.287681197	79792
GSDMD	Methotrexate	-0.088812778	0.016564234	79792
GSDMD	Midostaurin	-0.060322088	0.168597557	79792
GSDMD	Mitomycin C	-0.092295145	0.041162554	79792
GSDMD	NG-25	-0.022253907	0.571986214	79792
GSDMD	NPK76-II-72-1	0.033665821	0.366257339	79792
GSDMD	NSC-207895	0.097950176	0.0164254	79792
GSDMD	NSC-87877	0.004038212	0.958210933	79792
GSDMD	NU-7441	-0.095382213	0.09580074	79792
GSDMD	Navitoclax	0.002021942	0.963353442	79792
GSDMD	Nilotinib	-0.09789255	0.028911185	79792
GSDMD	Nutlin-3a (-)	-0.052813553	0.265092073	79792
GSDMD	OSI-027	-0.022973121	0.560227953	79792
GSDMD	OSI-930	-0.085886468	0.023597074	79792
GSDMD	OSU-03012	-0.108958327	0.011928082	79792
GSDMD	Obatoclox Mesylate	-0.107823294	0.010244926	79792
GSDMD	Olaparib	-0.026657981	0.57311808	79792
GSDMD	PAC-1	-0.058479115	0.165913395	79792
GSDMD	PD-0325901	-0.133396206	0.000446477	79792
GSDMD	PD-0332991	-0.098364545	0.036088772	79792
GSDMD	PD-173074	-0.020441721	0.91069623	79792
GSDMD	PF-4708671	-0.051281388	0.572981717	79792
GSDMD	PF-562271	-0.092523597	0.060852283	79792
GSDMD	PFI-1	-0.07598397	0.088941411	79792
GSDMD	PHA-665752	-0.068494589	0.627503031	79792
GSDMD	PHA-793887	-0.039528312	0.283650684	79792
GSDMD	PI-103	0.022071103	0.576921382	79792
GSDMD	PIK-93	-0.017900375	0.646890602	79792
GSDMD	PLX4720	-0.057030315	0.167341052	79792
GSDMD	Paclitaxel	-0.236038197	0.003209596	79792
GSDMD	Parthenolide	-0.087321881	0.36081215	79792
GSDMD	Pazopanib	0.010107823	0.883907971	79792
GSDMD	Phenformin	-0.029518104	0.458709354	79792
GSDMD	Pyrimethamine	-0.094254405	0.372745084	79792
GSDMD	QL-VIII-58	-0.117183288	0.068225422	79792
GSDMD	QL-X-138	-0.006081322	0.887411885	79792
GSDMD	QL-XI-92	-0.072348601	0.047375863	79792
GSDMD	QL-XII-47	-0.006962967	0.88575008	79792
GSDMD	QL-XII-61	-0.071411396	0.273506248	79792
GSDMD	QS11	-0.032020263	0.632061077	79792
GSDMD	RDEA119	-0.149179521	0.000019101	79792
GSDMD	RO-3306	-0.06471448	0.12284793	79792
GSDMD	Rapamycin	-0.078142837	0.477684324	79792
GSDMD	Roscovitine	-0.051928946	0.764332853	79792
GSDMD	Ruxolitinib	-0.07286777	0.113866082	79792
GSDMD	S-Trityl-L-cysteine	-0.200701138	0.003808962	79792
GSDMD	SB 216763	-0.027266294	0.610820526	79792
GSDMD	SB 505124	0.078737881	0.208906044	79792
GSDMD	SB52334	0.164165509	0.000017897	79792
GSDMD	SB590885	-0.033006081	0.530098209	79792
GSDMD	SGC0946	-0.002895419	0.968565997	79792
GSDMD	SL 0101-1	-0.040147352	0.606236928	79792
GSDMD	SN-38	-0.102935679	0.009390032	79792
GSDMD	SNX-2112	-0.035271226	0.362115743	79792
GSDMD	STF-62247	-0.036867773	0.384873444	79792
GSDMD	Salubrinal	-0.152335781	0.040429758	79792
GSDMD	Saracatinib	-0.125252984	0.105749726	79792
GSDMD	Shikonin	-0.066613161	0.178782267	79792
GSDMD	Sorafenib	-0.180772946	0.012362055	79792

GSDMD	Sunitinib	-0.276439392	2.12125E-06	79792
GSDMD	T0901317	-0.021814531	0.63241446	79792
GSDMD	TAE684	-0.117369026	0.182134523	79792
GSDMD	TAK-715	-0.0626117	0.089642286	79792
GSDMD	TG101348	-0.04888459	0.188651653	79792
GSDMD	TGX221	-0.104651317	0.097138581	79792
GSDMD	THZ-2-102-1	0.018843087	0.636627696	79792
GSDMD	THZ-2-49	-0.06734413	0.070318831	79792
GSDMD	TL-1-85	-0.04623497	0.220184199	79792
GSDMD	TL-2-105	-0.010342023	0.808099407	79792
GSDMD	TPCA-1	-0.034981888	0.35171058	79792
GSDMD	TW 37	0.047363224	0.308096615	79792
GSDMD	Talazoparib	-0.016190381	0.757463552	79792
GSDMD	Tamoxifen	-0.051954123	0.624112886	79792
GSDMD	Temozolomide	-0.07359664	0.201317876	79792
GSDMD	Temsirolimus	-0.073562695	0.106444615	79792
GSDMD	Thapsigargin	-0.016376804	0.844439001	79792
GSDMD	Tipifarnib	-0.11600153	0.018709048	79792
GSDMD	Tivozanib	-0.030236229	0.632648161	79792
GSDMD	Trametinib	-0.117078134	0.001225082	79792
GSDMD	Tubastatin A	0.038478295	0.304941674	79792
GSDMD	UNC0638	0.036216014	0.328766034	79792
GSDMD	UNC1215	-0.007411739	0.908365494	79792
GSDMD	VNLG/124	-0.090936543	0.020375083	79792
GSDMD	VX-11e	-0.05243972	0.263160411	79792
GSDMD	VX-680	-0.19373618	0.008143091	79792
GSDMD	VX-702	-0.005495592	0.986082424	79792
GSDMD	Veliparib	-0.043107506	0.532677218	79792
GSDMD	Vinblastine	-0.096913986	0.018681436	79792
GSDMD	Vinorelbine	-0.062176989	0.228681298	79792
GSDMD	Vorinostat	0.003430962	0.935130441	79792
GSDMD	WH-4-023	-0.114593949	0.104698221	79792
GSDMD	WZ-1-84	-0.146368216	0.032189159	79792
GSDMD	WZ3105	-0.018755614	0.631414403	79792
GSDMD	XAV939	-0.072639344	0.060966976	79792
GSDMD	XL-184	-0.064598038	0.148233901	79792
GSDMD	XMD11-85h	-0.061794474	0.704099421	79792
GSDMD	XMD13-2	-0.05301151	0.151887771	79792
GSDMD	XMD14-99	-0.05341119	0.1693769	79792
GSDMD	XMD15-27	-0.05819178	0.202623344	79792
GSDMD	XMD8-85	-0.224051174	0.000569018	79792
GSDMD	XMD8-92	-0.068832359	0.498108207	79792
GSDMD	Y-39983	0.002356906	0.956482821	79792
GSDMD	YK 4-279	-0.075034466	0.126555857	79792
GSDMD	YM155	-0.003752481	0.959567063	79792
GSDMD	YM201636	0.066373584	0.073922267	79792
GSDMD	Z-LLNle-CHO	-0.319795506	3.88642E-08	79792
GSDMD	ZG-10	-0.052106605	0.451475281	79792
GSDMD	ZM-447439	-0.073928156	0.093783095	79792
GSDMD	ZSTK474	-0.081090548	0.025675208	79792
GSDMD	Zibotentan	-0.051923265	0.794808243	79792
GSDMD	piperlongumine	-0.07234258	0.082156836	79792
GSDMD	rTRAIL	-0.025430581	0.757790916	79792
GSDMD	selumetinib	-0.128283572	0.000291313	79792

Supp. Table 6. Drug sensitivity of *GSDMD* gene expression.

symbol	drug	cor	fd	entrez
GSDMC	16-beta-bromoandrosterone	0.000964955	0.987431201	56169
GSDMC	1S,3R-RSL-3	0.102129898	0.010494474	56169
GSDMC	3-CI-AHPC	-0.002617769	0.955097481	56169
GSDMC	968	0.057832064	0.976177471	56169
GSDMC	A-804598	0.005025342	0.983073023	56169
GSDMC	AA-COCF3	0.018048091	0.699398236	56169
GSDMC	ABT-199	0.016619701	0.800313493	56169
GSDMC	ABT-737	0.087350323	0.047303637	56169

GSDMC	AC55649	-0.04870282	0.687604993	56169
GSDMC	AGK-2	-0.010458082	0.987189679	56169
GSDMC	AM-580	-0.032058202	0.578886222	56169
GSDMC	AT-406	0.039357258	0.733514528	56169
GSDMC	AT13387	-0.019289694	0.768910269	56169
GSDMC	AT7867	0.138815634	0.000451912	56169
GSDMC	AZ-3146	0.023929405	0.609182802	56169
GSDMC	AZD1480	0.043403893	0.584973997	56169
GSDMC	AZD4547	0.108819072	0.014329462	56169
GSDMC	AZD6482	-0.036839495	0.554334784	56169
GSDMC	AZD7545	0.042454206	0.352191595	56169
GSDMC	AZD7762	-0.000380032	0.993245743	56169
GSDMC	AZD8055	-0.015911284	0.723196912	56169
GSDMC	B02	0.007920363	0.866688504	56169
GSDMC	BCL-LZH-4	-0.147442901	0.422450666	56169
GSDMC	BEC	-0.012929687	0.999979174	56169
GSDMC	BI-2536	0.049766216	0.199016728	56169
GSDMC	BIBR-1532	-0.02713146	0.603130915	56169
GSDMC	BIRB-796	0.00908345	0.868125218	56169
GSDMC	BIX-01294	0.087117539	0.026675426	56169
GSDMC	BMS-195614	0.018956143	0.802784012	56169
GSDMC	BMS-270394	-0.053418517	0.25504613	56169
GSDMC	BMS-345541	-0.029954987	0.47332863	56169
GSDMC	BMS-536924	-0.082335152	0.098650491	56169
GSDMC	BMS-754807	0.003840119	0.949377245	56169
GSDMC	BRD-A02303741	0.034962469	0.547673172	56169
GSDMC	BRD-A05715709	-0.068808752	0.640079059	56169
GSDMC	BRD-A71883111	-0.030078651	0.531452364	56169
GSDMC	BRD-A86708339	0.009709138	0.890997831	56169
GSDMC	BRD-A94377914	0.056645265	0.340183503	56169
GSDMC	BRD-K01737880	0.100920969	0.642396554	56169
GSDMC	BRD-K02251932	-0.053920534	0.29972707	56169
GSDMC	BRD-K02492147	-0.030580581	0.635069174	56169
GSDMC	BRD-K04800985	-0.036169221	0.99880963	56169
GSDMC	BRD-K09344309	0.104954543	0.81896693	56169
GSDMC	BRD-K09587429	-0.017786265	0.819754352	56169
GSDMC	BRD-K11533227	0.032598532	0.488921625	56169
GSDMC	BRD-K13999467	0.009412866	0.858902596	56169
GSDMC	BRD-K14844214	-0.011070113	0.909543002	56169
GSDMC	BRD-K16147474	-0.022147432	0.961235522	56169
GSDMC	BRD-K17060750	-0.030485779	0.582587506	56169
GSDMC	BRD-K19103580	-0.010075599	0.870343863	56169
GSDMC	BRD-K24690302	0.012601261	0.804105383	56169
GSDMC	BRD-K26531177	0.089457066	0.030650521	56169
GSDMC	BRD-K27224038	0.003801734	0.991052089	56169
GSDMC	BRD-K27986637	0.00713727	0.975051924	56169
GSDMC	BRD-K28456706	0.027355682	0.555171855	56169
GSDMC	BRD-K29086754	-0.102198768	0.584549844	56169
GSDMC	BRD-K29313308	0.006123769	0.904559449	56169
GSDMC	BRD-K30019337	0.074021561	0.794208857	56169
GSDMC	BRD-K30748066	0.006624273	0.97804698	56169
GSDMC	BRD-K33199242	-0.019299933	0.978378934	56169
GSDMC	BRD-K33514849	0.068094356	0.999288401	56169
GSDMC	BRD-K34099515	-0.013894857	0.991363606	56169
GSDMC	BRD-K34222889	0.081787359	0.035216009	56169
GSDMC	BRD-K34485477	0.070390969	0.998562234	56169
GSDMC	BRD-K35604418	-0.011283884	0.799666874	56169
GSDMC	BRD-K37390332	0.056876886	0.73831986	56169
GSDMC	BRD-K41334119	0.024080461	0.977976412	56169
GSDMC	BRD-K41597374	0.0031788	0.947628966	56169
GSDMC	BRD-K42260513	0.035269794	0.994633498	56169
GSDMC	BRD-K44224150	0.046049847	0.994574195	56169
GSDMC	BRD-K45681478	-0.004455608	0.936340636	56169
GSDMC	BRD-K48334597	0.033208754	0.816742931	56169
GSDMC	BRD-K48477130	-0.103126339	0.587632551	56169
GSDMC	BRD-K49290616	-0.056158728	0.900175972	56169
GSDMC	BRD-K50799972	-0.010397284	0.917065769	56169

GSDMC	BRD-K51490254	0.018793986	0.688725336	56169
GSDMC	BRD-K51831558	-0.010560538	0.904245966	56169
GSDMC	BRD-K52037352	-0.063805599	0.314052054	56169
GSDMC	BRD-K55116708	-0.010710132	0.847626977	56169
GSDMC	BRD-K61166597	0.018771329	0.669611356	56169
GSDMC	BRD-K63431240	0.008591449	0.870147335	56169
GSDMC	BRD-K64610608	0.017014506	0.904798232	56169
GSDMC	BRD-K66453893	-0.0415573	0.30061274	56169
GSDMC	BRD-K66532283	-0.021394948	0.629923699	56169
GSDMC	BRD-K70511574	0.047616052	0.235307267	56169
GSDMC	BRD-K71781559	-0.027260305	0.993921887	56169
GSDMC	BRD-K75293299	0.037608996	0.900544548	56169
GSDMC	BRD-K78574327	-0.003660233	0.99731699	56169
GSDMC	BRD-K80183349	-0.012374335	0.783200658	56169
GSDMC	BRD-K84807411	0.061779742	0.832967982	56169
GSDMC	BRD-K85133207	0.01996566	0.68749701	56169
GSDMC	BRD-K86535717	-0.042161417	0.917253937	56169
GSDMC	BRD-K88742110	0.013378224	0.779390159	56169
GSDMC	BRD-K90370028	-0.016535618	0.976273931	56169
GSDMC	BRD-K92856060	0.041135264	0.352696963	56169
GSDMC	BRD-K96431673	-0.054155529	0.986199957	56169
GSDMC	BRD-K96970199	0.019737229	0.998763577	56169
GSDMC	BRD-K97651142	0.068760536	0.104524214	56169
GSDMC	BRD-K99006945	0.063082616	0.394981543	56169
GSDMC	BRD-M00053801	-0.007648892	0.960345185	56169
GSDMC	BRD1378	0.015963846	0.913965545	56169
GSDMC	BRD1812	0.045045514	0.286632952	56169
GSDMC	BRD1835	0.003945957	0.952345359	56169
GSDMC	BRD4132	0.013552005	0.865118847	56169
GSDMC	BRD5468	-0.008480059	0.945751846	56169
GSDMC	BRD6340	-0.088270417	0.026899069	56169
GSDMC	BRD8899	-0.004632745	0.97643626	56169
GSDMC	BRD8958	0.039499023	0.982208781	56169
GSDMC	BRD9647	0.021783936	0.718417281	56169
GSDMC	BRD9876	-0.022418404	0.752794046	56169
GSDMC	BYL-719	-0.153135923	0.006556232	56169
GSDMC	Bax channel blocker	0.056602543	0.218881892	56169
GSDMC	C6-ceramide	-0.008341812	0.959670263	56169
GSDMC	CAL-101	-0.026216318	0.710194338	56169
GSDMC	CAY10576	0.012830267	0.892238548	56169
GSDMC	CAY10594	-0.033122773	0.605727709	56169
GSDMC	CAY10618	0.105105474	0.007427217	56169
GSDMC	CBB-1007	0.016281693	0.950196953	56169
GSDMC	CC7036477	0.051041766	0.213712908	56169
GSDMC	CD-1530	-0.031738872	0.602800365	56169
GSDMC	CD-437	0.005091842	0.909826762	56169
GSDMC	CHIR-99021	0.061033587	0.158894371	56169
GSDMC	CHM-1	0.03879052	0.332285797	56169
GSDMC	CI-976	0.009363219	0.962926213	56169
GSDMC	CID-5951923	-0.026444702	0.791143316	56169
GSDMC	CIL41	0.035009777	0.657179969	56169
GSDMC	CIL55	0.018257847	0.949161253	56169
GSDMC	CIL55A	0.01466223	0.839230425	56169
GSDMC	CIL56	-0.030004933	0.654324529	56169
GSDMC	CIL70	0.076275989	0.202555132	56169
GSDMC	COL-3	0.000030168	0.999847614	56169
GSDMC	CR-1-31B	-0.061677233	0.107679192	56169
GSDMC	Ch-55	-0.036801717	0.484529631	56169
GSDMC	Compound 1541A	0.047368018	0.460850861	56169
GSDMC	Compound 23 citrate	-0.011479248	0.795144788	56169
GSDMC	Compound 7d-cis	0.009028692	0.859025248	56169
GSDMC	DBeQ	0.003059649	0.95273858	56169
GSDMC	DNMDP	0.07117784	0.291937059	56169
GSDMC	ELCPK	0.026255369	0.704588599	56169
GSDMC	ETP-46464	0.011195002	0.864761036	56169
GSDMC	EX-527	-0.0137322	0.928993691	56169
GSDMC	FGIN-1-27	-0.069994063	0.600893622	56169

GSDMC	FQI-1	0.017583542	0.781985539	56169
GSDMC	FQI-2	0.026944295	0.514012533	56169
GSDMC	FSC231	0.075102718	0.999449861	56169
GSDMC	GANT-61	0.001271017	0.987045461	56169
GSDMC	GDC-0879	0.076444097	0.131608568	56169
GSDMC	GDC-0941	-0.10380114	0.015842328	56169
GSDMC	GMX-1778	0.079618339	0.053383811	56169
GSDMC	GSK-3 inhibitor IX	0.033539014	0.467320927	56169
GSDMC	GSK-J4	0.172644281	0.282378926	56169
GSDMC	GSK1059615	-0.083961995	0.730690615	56169
GSDMC	GSK2636771	0.034509836	0.753975139	56169
GSDMC	GSK4112	-0.009284179	0.88317398	56169
GSDMC	GSK461364	0.071420079	0.067944462	56169
GSDMC	GSK525762A	0.017704155	0.67391857	56169
GSDMC	GW-405833	-0.013255071	0.758341522	56169
GSDMC	GW-843682X	-0.004771102	0.923379099	56169
GSDMC	HBX-41108	0.062818798	0.269457197	56169
GSDMC	HC-067047	-0.012195977	0.875890047	56169
GSDMC	HLI 373	0.054376804	0.209762079	56169
GSDMC	I-BET151	0.035552191	0.372508999	56169
GSDMC	IC-87114	0.022715598	0.78054124	56169
GSDMC	IPR-456	0.00588129	0.979507738	56169
GSDMC	ISOX	0.082483172	0.034650997	56169
GSDMC	IU1	-0.024009452	0.823981634	56169
GSDMC	JQ-1	0.01599083	0.706043236	56169
GSDMC	JW-480	0.036158221	0.84475124	56169
GSDMC	JW-55	0.000055783	0.999521789	56169
GSDMC	JW-74	0.032286065	0.747517826	56169
GSDMC	KH-CB19	0.035465236	0.759989504	56169
GSDMC	KHS101	0.012668761	0.795903506	56169
GSDMC	KPT185	-0.021902904	0.662816823	56169
GSDMC	KU 0060648	-0.035249024	0.419965378	56169
GSDMC	KU-0063794	-0.001706499	0.971910199	56169
GSDMC	KU-55933	-0.076047389	0.078351088	56169
GSDMC	KU-60019	-0.029594425	0.487241759	56169
GSDMC	KW-2449	0.095651722	0.013274518	56169
GSDMC	KX2-391	0.068011765	0.084075536	56169
GSDMC	Ki8751	0.084810907	0.050055308	56169
GSDMC	Ko-143	0.019141213	0.669580129	56169
GSDMC	L-685458	-0.044511255	0.476551158	56169
GSDMC	LE-135	-0.011490486	0.822396108	56169
GSDMC	LRRK2-IN-1	0.041680732	0.391031012	56169
GSDMC	LY-2157299	-0.076200099	0.748551582	56169
GSDMC	LY-2183240	0.055855587	0.152523171	56169
GSDMC	MG-132	0.037853793	0.694274207	56169
GSDMC	MGCD-265	-0.007175009	0.874920843	56169
GSDMC	MI-1	-0.074722964	0.321273549	56169
GSDMC	MI-2	0.051018933	0.476437011	56169
GSDMC	MK-0752	-0.064745972	0.354036523	56169
GSDMC	MK-1775	-0.022973465	0.593795343	56169
GSDMC	MK-2206	-0.031805508	0.500067107	56169
GSDMC	ML006	-0.006780795	0.917076386	56169
GSDMC	ML029	0.048864725	0.29102983	56169
GSDMC	ML031	0.037121324	0.420919645	56169
GSDMC	ML050	0.022752322	0.635092911	56169
GSDMC	ML083	-0.058113966	0.609007459	56169
GSDMC	ML162	0.110983554	0.006199718	56169
GSDMC	ML203	-0.089006529	0.078238337	56169
GSDMC	ML210	0.121869807	0.002377287	56169
GSDMC	ML239	0.099038414	0.017085101	56169
GSDMC	ML258	0.004004426	0.977801246	56169
GSDMC	ML311	0.02170777	0.599833134	56169
GSDMC	ML312	-0.105530606	0.957289631	56169
GSDMC	ML320	0.109001454	0.012800459	56169
GSDMC	ML334 diastereomer	0.009135178	0.927291163	56169
GSDMC	MLN2238	-0.0030956	0.948372579	56169
GSDMC	MLN2480	0.100543935	0.262233721	56169

GSDMC	MST-312	0.010703757	0.805107935	56169
GSDMC	Mdivi-1	-0.043891486	0.32102786	56169
GSDMC	Merck60	0.014606505	0.731963655	56169
GSDMC	N9-isopropylolomoucine	-0.034160409	0.43267696	56169
GSDMC	NPC-26	0.011715021	0.943527123	56169
GSDMC	NSC 74859	0.032310302	0.572584959	56169
GSDMC	NSC19630	0.053449843	0.296316995	56169
GSDMC	NSC23766	-0.045878857	0.282742768	56169
GSDMC	NSC30930	-0.069043769	0.29410318	56169
GSDMC	NSC48300	-0.012710086	0.770415067	56169
GSDMC	NSC632839	0.016409998	0.698682808	56169
GSDMC	NSC95397	0.092449303	0.025283875	56169
GSDMC	NVP-231	0.030167841	0.472300658	56169
GSDMC	NVP-ADW742	-0.024783951	0.622746533	56169
GSDMC	NVP-BEZ235	-0.054883172	0.29452149	56169
GSDMC	NVP-BSK805	0.053384358	0.198462836	56169
GSDMC	NVP-TAE684	-0.023076562	0.675563847	56169
GSDMC	O-6-benzylguanine	0.011517373	0.946056693	56169
GSDMC	OSI-027	-0.031324567	0.503468909	56169
GSDMC	OSI-930	0.003868993	0.942810142	56169
GSDMC	PAC-1	0.01427985	0.747936858	56169
GSDMC	PD 153035	-0.171954639	0.000586046	56169
GSDMC	PD318088	-0.040431913	0.430769865	56169
GSDMC	PDMP	-0.003203813	0.951207189	56169
GSDMC	PF-184	0.042482795	0.30730193	56169
GSDMC	PF-3758309	0.014225891	0.822851841	56169
GSDMC	PF-4800567 hydrochloride	-0.003583594	0.999586205	56169
GSDMC	PF-543	-0.024620579	0.63888069	56169
GSDMC	PF-573228	0.005385949	0.90955095	56169
GSDMC	PF-750	0.04822605	0.328257681	56169
GSDMC	PHA-793887	-0.041495344	0.29561828	56169
GSDMC	PI-103	0.006420115	0.896097648	56169
GSDMC	PIK-93	-0.050982355	0.238832832	56169
GSDMC	PL-DI	0.062649781	0.115153371	56169
GSDMC	PLX-4720	0.018094815	0.845854706	56169
GSDMC	PRIMA-1	0.085846613	0.031579506	56169
GSDMC	PRIMA-1-Met	0.080999003	0.248811943	56169
GSDMC	PRL-3 inhibitor I	-0.042404547	0.753822551	56169
GSDMC	PX-12	0.090885355	0.018764708	56169
GSDMC	PYR-41	0.014387892	0.819203867	56169
GSDMC	QS-11	0.131402202	0.578930402	56169
GSDMC	QW-BI-011	0.066263863	0.500272849	56169
GSDMC	R428	0.081683871	0.110767911	56169
GSDMC	RAF265	0.015214486	0.826645417	56169
GSDMC	RG-108	0.109241189	0.00977377	56169
GSDMC	RITA	0.067000878	0.114349467	56169
GSDMC	RO4929097	0.019375081	0.827902738	56169
GSDMC	Repligen 136	0.009255183	0.855032288	56169
GSDMC	SB-225002	0.027103853	0.503681206	56169
GSDMC	SB-431542	-0.057083902	0.544832407	56169
GSDMC	SB-525334	0.057147023	0.268190808	56169
GSDMC	SB-743921	0.001898671	0.964351935	56169
GSDMC	SCH-529074	0.047884321	0.328589509	56169
GSDMC	SCH-79797	0.055412828	0.171174105	56169
GSDMC	SGX-523	-0.000753278	0.995238763	56169
GSDMC	SID 26681509	0.08606059	0.055381409	56169
GSDMC	SJ-172550	0.038777533	0.74229674	56169
GSDMC	SKI-II	0.032800502	0.503781559	56169
GSDMC	SMER-3	0.002505684	0.96431587	56169
GSDMC	SN-38	0.067116669	0.141034461	56169
GSDMC	SNS-032	-0.095608666	0.020282901	56169
GSDMC	SNX-2112	-0.074633372	0.051027796	56169
GSDMC	SR-II-138A	-0.032999507	0.398785677	56169
GSDMC	SR1001	0.038643784	0.605568558	56169
GSDMC	SR8278	-0.050338403	0.900992803	56169
GSDMC	SRT-1720	0.065608481	0.148685407	56169
GSDMC	STF-31	0.114866785	0.004041803	56169

GSDMC	SU11274	0.047439211	0.263490003	56169
GSDMC	SZ4TA2	0.015501042	0.92088258	56169
GSDMC	StemRegenin 1	-0.013736206	0.763658909	56169
GSDMC	TG-100-115	0.008185781	0.899884353	56169
GSDMC	TG-101348	0.049952544	0.241045695	56169
GSDMC	TGX-221	0.012970981	0.896594873	56169
GSDMC	TPCA-1	0.000928449	0.984488833	56169
GSDMC	TW-37	-0.010062187	0.832461633	56169
GSDMC	UNC0321	-0.079977268	0.396873043	56169
GSDMC	UNC0638	0.111769785	0.006864885	56169
GSDMC	VAF-347	0.013197792	0.868918877	56169
GSDMC	VER-155008	-0.06482213	0.128488296	56169
GSDMC	VU0155056	-0.046369099	0.889302808	56169
GSDMC	WAY-362450	0.015539639	0.99852118	56169
GSDMC	WP1130	0.069683886	0.091527644	56169
GSDMC	WZ4002	-0.069498761	0.310487539	56169
GSDMC	WZ8040	-0.111178156	0.019494086	56169
GSDMC	XL765	0.016099847	0.827635302	56169
GSDMC	YK 4-279	0.023188436	0.577532883	56169
GSDMC	YM-155	0.03655459	0.479415956	56169
GSDMC	ZSTK474	-0.04774521	0.387852662	56169
GSDMC	abiraterone	0.012342139	0.945391644	56169
GSDMC	afatinib	-0.189701967	6.05593E-06	56169
GSDMC	alisertib	0.021214376	0.623721826	56169
GSDMC	alvocidib	-0.020373391	0.751730293	56169
GSDMC	apicidin	0.003253846	0.941090024	56169
GSDMC	austocystin D	-0.026872275	0.607518399	56169
GSDMC	avicin D	-0.007322517	0.955198813	56169
GSDMC	avrainvillamide	-0.008035407	0.892353752	56169
GSDMC	axitinib	0.104952157	0.006953986	56169
GSDMC	azacitidine	-0.007496755	0.898886277	56169
GSDMC	bafilomycin A1	0.040834461	0.958140607	56169
GSDMC	barasertib	0.012210932	0.787681647	56169
GSDMC	bardoxolone methyl	-0.079373242	0.061838228	56169
GSDMC	belinostat	0.099471804	0.078822518	56169
GSDMC	bendamustine	0.042304797	0.347144328	56169
GSDMC	betulinic acid	-0.049004921	0.759237135	56169
GSDMC	bexarotene	-0.04822043	0.283644387	56169
GSDMC	birinapant	-0.054565546	0.395445273	56169
GSDMC	blebbistatin	-0.070586208	0.915382068	56169
GSDMC	bleomycin A2	-0.113267902	0.021308212	56169
GSDMC	bortezomib	0.034908337	0.412596081	56169
GSDMC	bosutinib	-0.08721423	0.033349567	56169
GSDMC	brefeldin A	0.053484139	0.247463816	56169
GSDMC	brivanib	0.00718054	0.876882633	56169
GSDMC	cabozantinib	0.011301101	0.855534764	56169
GSDMC	canertinib	-0.192271254	3.07963E-06	56169
GSDMC	cediranib	0.024015832	0.87690415	56169
GSDMC	ceranib-2	0.011337199	0.79291792	56169
GSDMC	cerulenin	0.041520527	0.308886366	56169
GSDMC	chlorambucil	0.100828972	0.01025271	56169
GSDMC	ciclopirox	0.027201633	0.496961192	56169
GSDMC	ciclosporin	-0.032140887	0.591179575	56169
GSDMC	cimetidine	0.051472043	0.972470539	56169
GSDMC	clofarabine	0.047415605	0.227086991	56169
GSDMC	crizotinib	0.052648225	0.197482414	56169
GSDMC	cucurbitacin I	0.088959425	0.030316018	56169
GSDMC	curcumin	-0.02878885	0.492343006	56169
GSDMC	cyanoguanoline 11	-0.129245252	0.099085344	56169
GSDMC	cyclophosphamide	-0.046927634	0.993392039	56169
GSDMC	cytarabine hydrochloride	0.027906797	0.489365145	56169
GSDMC	cytochalasin B	0.031188594	0.58445229	56169
GSDMC	dabrafenib	0.136103574	0.048376868	56169
GSDMC	dacarbazine	0.019192026	0.65397752	56169
GSDMC	daporinad	0.10809009	0.01347939	56169
GSDMC	darinaparsin	0.103065712	0.10257611	56169
GSDMC	dasatinib	-0.074953508	0.099983504	56169

GSDMC	decitabine	-0.032246668	0.422654732	56169
GSDMC	dexamethasone	-0.039935689	0.370040229	56169
GSDMC	dinaciclib	-0.041466107	0.493658005	56169
GSDMC	docetaxel	0.010090491	0.886909999	56169
GSDMC	doxorubicin	0.028253545	0.484182698	56169
GSDMC	elocalcitol	-0.036838571	0.369272061	56169
GSDMC	entinostat	0.056290584	0.160182731	56169
GSDMC	epigallocatechin-3-monogallate	0.111165362	0.010878216	56169
GSDMC	erastin	0.084874818	0.043896068	56169
GSDMC	erismodegib	-0.028745061	0.746196523	56169
GSDMC	erlotinib	-0.173902668	0.000013954	56169
GSDMC	etomoxir	0.017049146	0.979859873	56169
GSDMC	etoposide	0.061208327	0.11920263	56169
GSDMC	ingolimod	0.007103503	0.875943563	56169
GSDMC	fluorouracil	-0.117661468	0.002231263	56169
GSDMC	fluvastatin	0.096549239	0.044966138	56169
GSDMC	foretinib	0.037777783	0.412356801	56169
GSDMC	fulvestrant	0.067824176	0.867044974	56169
GSDMC	fumonisin B1	-0.00935205	0.91018506	56169
GSDMC	gefitinib	-0.154666995	0.000329544	56169
GSDMC	gemcitabine	0.063434792	0.124218157	56169
GSDMC	gossypol	0.027137116	0.535075009	56169
GSDMC	hyperforin	-0.027925271	0.78705785	56169
GSDMC	ibrutinib	-0.153726551	0.003045159	56169
GSDMC	ifosfamide	0.032976567	0.885551236	56169
GSDMC	imatinib	0.018911937	0.695174063	56169
GSDMC	importazole	-0.051628714	0.413417231	56169
GSDMC	indisulam	0.039059569	0.356302667	56169
GSDMC	isoevodiamine	-0.000959558	0.982260005	56169
GSDMC	isoliquiritigenin	0.045997122	0.629779816	56169
GSDMC	isonicotinohydroxamic acid	0.050724754	0.972370252	56169
GSDMC	istradefylline	-0.065135771	0.685640996	56169
GSDMC	itraconazole	0.019958795	0.817696296	56169
GSDMC	lapatinib	-0.214296557	9.36035E-08	56169
GSDMC	lenvatinib	0.073607081	0.097792498	56169
GSDMC	leptomycin B	-0.044048228	0.260676058	56169
GSDMC	linifanib	-0.103357576	0.007724279	56169
GSDMC	linsitinib	-0.05234017	0.242697912	56169
GSDMC	lomequatrib	0.015576577	0.815291398	56169
GSDMC	lovastatin	0.064053357	0.199355401	56169
GSDMC	manumycin A	0.029188877	0.474487851	56169
GSDMC	marinopyrrole A	0.069223028	0.185230418	56169
GSDMC	masitinib	-0.020109369	0.6704016	56169
GSDMC	methotrexate	-0.008713144	0.852189705	56169
GSDMC	methylstat	0.070826999	0.154534254	56169
GSDMC	mitomycin	0.058650974	0.143116165	56169
GSDMC	momelotinib	-0.034275415	0.433570279	56169
GSDMC	myricetin	0.00628211	0.96430732	56169
GSDMC	myriocin	-0.061870631	0.89981088	56169
GSDMC	nakiterpiosin	0.044489604	0.273067175	56169
GSDMC	narciclasine	0.009684691	0.820437152	56169
GSDMC	navitoclax	0.079468526	0.060077818	56169
GSDMC	necrostatin-1	-0.004920836	0.934073733	56169
GSDMC	necrostatin-7	-0.050143947	0.286511261	56169
GSDMC	necrosulfonamide	0.073905166	0.128741871	56169
GSDMC	nelarabine	-0.041789068	0.864242265	56169
GSDMC	neopeltolide	0.083158622	0.393936253	56169
GSDMC	neratinib	-0.097388308	0.020579193	56169
GSDMC	neuronal differentiation inducer III	0.02335053	0.576091071	56169
GSDMC	niclosamide	0.007974362	0.881652667	56169
GSDMC	nilotinib	-0.009452292	0.936711176	56169
GSDMC	nintedanib	0.031715794	0.599261782	56169
GSDMC	nutlin-3	0.085232957	0.036112681	56169
GSDMC	obatoclax	0.069716563	0.077521744	56169
GSDMC	olaparib	0.04047067	0.344547341	56169
GSDMC	oligomycin A	0.071473098	0.078316962	56169
GSDMC	omacetaxine mepesuccinate	-0.03644051	0.45515117	56169

GSDMC	ouabain	0.059715706	0.128344931	56169
GSDMC	paclitaxel	-0.022923582	0.590959905	56169
GSDMC	palmostatin B	0.049561515	0.665302502	56169
GSDMC	pandacostat	-0.026833249	0.594877927	56169
GSDMC	panobinostat	0.060483888	0.120713954	56169
GSDMC	parbendazole	0.041826742	0.285828823	56169
GSDMC	parthenolide	-0.012575911	0.856646534	56169
GSDMC	pazopanib	0.015791351	0.725957036	56169
GSDMC	pevonedistat	0.043778361	0.299675962	56169
GSDMC	phloretin	-0.020159466	0.643748528	56169
GSDMC	pifithrin-alpha	0.064584288	0.264175413	56169
GSDMC	pifithrin-mu	0.088078848	0.027232797	56169
GSDMC	piperlongumine	0.08014719	0.037117115	56169
GSDMC	pitstop2	0.017602245	0.942640742	56169
GSDMC	pluripotin	0.004117851	0.951929702	56169
GSDMC	procarbazine	-0.021275409	0.928745069	56169
GSDMC	prochlorperazine	0.023967549	0.651219928	56169
GSDMC	purmorphamine	0.033278641	0.507402137	56169
GSDMC	pyrazolanthrone	-0.027757139	0.624457323	56169
GSDMC	quizartinib	0.003444112	0.96601243	56169
GSDMC	regorafenib	0.034535906	0.518950585	56169
GSDMC	rigosertib	0.056652063	0.162923989	56169
GSDMC	ruxolitinib	-0.008228173	0.872677145	56169
GSDMC	salmeterol	-0.054220915	0.578637828	56169
GSDMC	saracatinib	-0.123392529	0.003891712	56169
GSDMC	selumetinib	-0.056988986	0.253711298	56169
GSDMC	semagacestat	-0.002967723	0.991350965	56169
GSDMC	serdemetan	0.056936632	0.17208735	56169
GSDMC	sildenafil	-0.018045245	0.907914797	56169
GSDMC	silmitasertib	-0.085860366	0.265421248	56169
GSDMC	simvastatin	0.068447858	0.225657928	56169
GSDMC	sirolimus	-0.03831501	0.362553178	56169
GSDMC	sitagliptin	-0.033822855	0.997718377	56169
GSDMC	skepinone-L	-0.012537985	0.867237552	56169
GSDMC	sorafenib	0.069355492	0.111864693	56169
GSDMC	sotrastaurin	0.052939927	0.277493171	56169
GSDMC	spautin-1	-0.01524128	0.791863887	56169
GSDMC	staurosporine	0.060616213	0.667195847	56169
GSDMC	sunitinib	0.061922212	0.134408094	56169
GSDMC	tacedinaline	0.043777628	0.375939529	56169
GSDMC	tacrolimus	0.055691796	0.208751633	56169
GSDMC	tamatinib	-0.039336856	0.644225482	56169
GSDMC	tamoxifen	-0.045267738	0.507622723	56169
GSDMC	tandutinib	0.019224459	0.702971121	56169
GSDMC	tanespimycin	-0.08973143	0.07123696	56169
GSDMC	temozolomide	0.011293828	0.89451965	56169
GSDMC	temsirolimus	-0.045631823	0.504611911	56169
GSDMC	teniposide	0.030163006	0.610502691	56169
GSDMC	thalidomide	-0.018213801	0.947050952	56169
GSDMC	tigecycline	0.011247913	0.875930203	56169
GSDMC	tipifarnib-P1	-0.00904056	0.838269612	56169
GSDMC	tipifarnib-P2	0.040864856	0.501138099	56169
GSDMC	tivantinib	0.037989374	0.542955454	56169
GSDMC	tivozanib	0.006799045	0.913166918	56169
GSDMC	topotecan	0.058044735	0.137536831	56169
GSDMC	tosedostat	-0.022882721	0.635430144	56169
GSDMC	tozasertib	0.141640853	0.415579556	56169
GSDMC	trametinib	-0.001562615	0.989117423	56169
GSDMC	tretinoin	-0.043592605	0.318896226	56169
GSDMC	triazolothiadiazine	0.054106949	0.161960305	56169
GSDMC	trifluoperazine	-0.000924667	0.99053635	56169
GSDMC	triptolide	-0.027928171	0.508568147	56169
GSDMC	tubastatin A	0.034967261	0.612370174	56169
GSDMC	valdecixib	0.029762946	0.489151968	56169
GSDMC	vandetanib	-0.123724745	0.006598264	56169
GSDMC	veliparib	0.023296593	0.805668224	56169
GSDMC	vemurafenib	0.045996269	0.428678058	56169

GSDMC	vincristine	0.063215967	0.095295943	56169
GSDMC	vorapaxar	0.014839906	0.79264722	56169
GSDMC	vorinostat	0.084652754	0.029910743	56169
GSDMC	zebularine	0.033531109	0.430794776	56169
GSDMD	16-beta-bromoandrosterone	0.041136615	0.418416217	79792
GSDMD	15,3R-RSL-3	0.01753711	0.703376492	79792
GSDMD	3-CI-AHPC	-0.03532026	0.394295918	79792
GSDMD	968	0.01014109	0.998628187	79792
GSDMD	A-804598	0.042401838	0.803842864	79792
GSDMD	AA-COCF3	0.015933361	0.734192039	79792
GSDMD	ABT-199	0.019697354	0.761922231	79792
GSDMD	ABT-737	-0.021623664	0.672225513	79792
GSDMD	AC55649	0.090532539	0.414458055	79792
GSDMD	AGK-2	-0.033129463	0.932065143	79792
GSDMD	AM-580	-0.046895605	0.385881198	79792
GSDMD	AT-406	-0.029718006	0.814108366	79792
GSDMD	AT13387	0.037351893	0.557630037	79792
GSDMD	AT7867	0.027340888	0.548972181	79792
GSDMD	AZ-3146	-0.055385694	0.201237875	79792
GSDMD	AZD1480	0.087655951	0.219249147	79792
GSDMD	AZD4547	0.052040185	0.28298588	79792
GSDMD	AZD6482	-0.034711397	0.581650378	79792
GSDMD	AZD7545	-0.034348271	0.461188683	79792
GSDMD	AZD7762	-0.156716977	0.000032243	79792
GSDMD	AZD8055	0.027295273	0.530295626	79792
GSDMD	B02	0.069410156	0.091874635	79792
GSDMD	BCL-LZH-4	-0.06107223	0.765849998	79792
GSDMD	BEC	0.039164197	0.999979174	79792
GSDMD	BI-2536	0.052494126	0.174390122	79792
GSDMD	BIBR-1532	0.068149983	0.138436765	79792
GSDMD	BIRB-796	-0.013342271	0.803139988	79792
GSDMD	BIX-01294	0.017119874	0.691565207	79792
GSDMD	BMS-195614	0.0985907	0.076952159	79792
GSDMD	BMS-270394	-0.002703332	0.965308374	79792
GSDMD	BMS-345541	-0.004823892	0.914734156	79792
GSDMD	BMS-536924	-0.083023166	0.095982223	79792
GSDMD	BMS-754807	0.080854169	0.06794324	79792
GSDMD	BRD-A02303741	0.024430475	0.690245037	79792
GSDMD	BRD-A05715709	-0.036621712	0.826825784	79792
GSDMD	BRD-A71883111	-0.034323255	0.468233965	79792
GSDMD	BRD-A86708339	0.060853997	0.332932068	79792
GSDMD	BRD-A94377914	-0.01731664	0.790307714	79792
GSDMD	BRD-K01737880	-0.034879326	0.893180928	79792
GSDMD	BRD-K02251932	-0.02344121	0.688496801	79792
GSDMD	BRD-K02492147	-0.008899163	0.905515415	79792
GSDMD	BRD-K04800985	-0.077861944	0.99880963	79792
GSDMD	BRD-K09344309	0.176508463	0.587180302	79792
GSDMD	BRD-K09587429	-0.012138306	0.879528067	79792
GSDMD	BRD-K11533227	0.018114585	0.715573426	79792
GSDMD	BRD-K13999467	-0.014273352	0.780427375	79792
GSDMD	BRD-K14844214	-0.069906062	0.287820706	79792
GSDMD	BRD-K16147474	-0.003234583	0.99541999	79792
GSDMD	BRD-K17060750	0.02250042	0.698757844	79792
GSDMD	BRD-K19103580	-0.007046673	0.910763492	79792
GSDMD	BRD-K24690302	0.031147238	0.506304211	79792
GSDMD	BRD-K26531177	-0.000296281	0.995383427	79792
GSDMD	BRD-K27224038	-0.066216104	0.807806238	79792
GSDMD	BRD-K27986637	-0.133541533	0.339943153	79792
GSDMD	BRD-K28456706	0.031264329	0.49374851	79792
GSDMD	BRD-K29086754	-0.136488303	0.416789147	79792
GSDMD	BRD-K29313308	-0.049503922	0.265647697	79792
GSDMD	BRD-K30019337	0.055836986	0.858690635	79792
GSDMD	BRD-K30748066	-0.198662293	0.252241628	79792
GSDMD	BRD-K33199242	-0.043187362	0.948158325	79792
GSDMD	BRD-K33514849	-0.275178061	0.999288401	79792
GSDMD	BRD-K34099515	0.135275592	0.827209842	79792
GSDMD	BRD-K34222889	0.016710287	0.692908151	79792

GSDMD	BRD-K34485477	0.06868971	0.998562234	79792
GSDMD	BRD-K35604418	0.058927008	0.148603987	79792
GSDMD	BRD-K37390332	-0.021475545	0.948798174	79792
GSDMD	BRD-K41334119	-0.062905297	0.920196991	79792
GSDMD	BRD-K41597374	-0.006023952	0.900115922	79792
GSDMD	BRD-K42260513	0.050760502	0.994633498	79792
GSDMD	BRD-K44224150	-0.095935207	0.96369476	79792
GSDMD	BRD-K45681478	0.004611655	0.934209826	79792
GSDMD	BRD-K48334597	-0.056721834	0.656634668	79792
GSDMD	BRD-K48477130	-0.165006843	0.366778942	79792
GSDMD	BRD-K49290616	-0.006210402	0.993657479	79792
GSDMD	BRD-K50799972	-0.111245918	0.068147074	79792
GSDMD	BRD-K51490254	0.121312082	0.003433975	79792
GSDMD	BRD-K51831558	0.068420925	0.341521968	79792
GSDMD	BRD-K52037352	-0.031074897	0.659279514	79792
GSDMD	BRD-K55116708	-0.125249011	0.003293979	79792
GSDMD	BRD-K61166597	-0.038132289	0.368180616	79792
GSDMD	BRD-K63431240	-0.133265105	0.001078107	79792
GSDMD	BRD-K64610608	0.071670507	0.501247721	79792
GSDMD	BRD-K66453893	-0.019950162	0.630659342	79792
GSDMD	BRD-K66532283	-0.047149427	0.262992109	79792
GSDMD	BRD-K70511574	-0.00770296	0.860632994	79792
GSDMD	BRD-K71781559	-0.002200153	0.999729774	79792
GSDMD	BRD-K75293299	0.04632255	0.874591617	79792
GSDMD	BRD-K78574327	0.061484078	0.97005555	79792
GSDMD	BRD-K80183349	0.004436616	0.92649022	79792
GSDMD	BRD-K84807411	-0.036581638	0.915299717	79792
GSDMD	BRD-K85133207	-0.00438439	0.934827242	79792
GSDMD	BRD-K86535717	0.000240798	0.999287713	79792
GSDMD	BRD-K88742110	0.002786155	0.955789743	79792
GSDMD	BRD-K90370028	0.065664715	0.871459419	79792
GSDMD	BRD-K92856060	0.039246366	0.377070877	79792
GSDMD	BRD-K96431673	0.025384209	0.996125153	79792
GSDMD	BRD-K96970199	-0.016958036	0.998763577	79792
GSDMD	BRD-K97651142	0.060960565	0.154085816	79792
GSDMD	BRD-K99006945	-0.121006259	0.081938972	79792
GSDMD	BRD-M00053801	0.123784736	0.140207967	79792
GSDMD	BRD1378	-0.029833642	0.812790169	79792
GSDMD	BRD1812	0.04632818	0.272104296	79792
GSDMD	BRD1835	-0.017707333	0.754182267	79792
GSDMD	BRD4132	0.087786844	0.138857672	79792
GSDMD	BRD5468	-0.058105302	0.47350437	79792
GSDMD	BRD6340	-0.016367677	0.710867429	79792
GSDMD	BRD8899	-0.031492227	0.792304307	79792
GSDMD	BRD8958	0.006064245	0.993130306	79792
GSDMD	BRD9647	-0.018356851	0.768353234	79792
GSDMD	BRD9876	0.1075442	0.057905166	79792
GSDMD	BYL-719	0.039975573	0.593211307	79792
GSDMD	Bax channel blocker	-0.017241833	0.738571899	79792
GSDMD	C6-ceramide	0.02409646	0.858710768	79792
GSDMD	CAL-101	-0.08342092	0.121050489	79792
GSDMD	CAY10576	0.031255697	0.69470264	79792
GSDMD	CAY10594	0.0018781	0.980054968	79792
GSDMD	CAY10618	0.04039761	0.34288821	79792
GSDMD	CBB-1007	-0.054314395	0.758051294	79792
GSDMD	CCT036477	-0.030951963	0.464465212	79792
GSDMD	CD-1530	-0.01575606	0.814125756	79792
GSDMD	CD-437	-0.038285908	0.349279734	79792
GSDMD	CHIR-99021	-0.150299125	0.000192569	79792
GSDMD	CHM-1	0.041917435	0.293165119	79792
GSDMD	CI-976	0.074779689	0.553821916	79792
GSDMD	CID-5951923	0.106132821	0.175016728	79792
GSDMD	CIL41	0.07978222	0.253040416	79792
GSDMD	CIL55	-0.003206018	0.993303299	79792
GSDMD	CIL55A	-0.03719114	0.575938955	79792
GSDMD	CIL56	-0.121294138	0.041195705	79792
GSDMD	CIL70	0.013469541	0.84844983	79792

GSDMD	COL-3	-0.069871085	0.136586783	79792
GSDMD	CR-1-31B	-0.024576783	0.538682464	79792
GSDMD	Ch-55	0.018817777	0.748321625	79792
GSDMD	Compound 1541A	-0.000813838	0.992966587	79792
GSDMD	Compound 23 citrate	-0.084294276	0.034189904	79792
GSDMD	Compound 7d-cis	0.019849907	0.684942578	79792
GSDMD	DBeQ	0.094508256	0.027419463	79792
GSDMD	DNMDP	-0.061198091	0.375722235	79792
GSDMD	ELCPK	0.077276718	0.21471265	79792
GSDMD	ETP-46464	0.026471538	0.668256366	79792
GSDMD	EX-527	0.17769282	0.021001008	79792
GSDMD	FGIN-1-27	0.062086906	0.650283494	79792
GSDMD	FQI-1	-0.046815365	0.433422018	79792
GSDMD	FQI-2	-0.026254513	0.525369364	79792
GSDMD	FSC231	0.073442148	0.999449861	79792
GSDMD	GANT-61	-0.040694095	0.516222051	79792
GSDMD	GDC-0879	-0.059926954	0.263228948	79792
GSDMD	GDC-0941	-0.066052	0.143022867	79792
GSDMD	GMX-1778	0.067129336	0.109287969	79792
GSDMD	GSK-3 inhibitor IX	-0.094378456	0.024666001	79792
GSDMD	GSK-J4	-0.128424207	0.4456683	79792
GSDMD	GSK1059615	0.055040615	0.839306845	79792
GSDMD	GSK2636771	0.015924437	0.902088487	79792
GSDMD	GSK4112	-0.043538042	0.398195517	79792
GSDMD	GSK461364	0.007237838	0.86613978	79792
GSDMD	GSK525762A	-0.070636013	0.06869914	79792
GSDMD	GW-405833	-0.037731814	0.356940965	79792
GSDMD	GW-843682X	0.003954389	0.937365954	79792
GSDMD	HBX-41108	0.055014644	0.343822832	79792
GSDMD	HC-067047	-0.013992674	0.857654417	79792
GSDMD	HLI 373	-0.017365983	0.714881424	79792
GSDMD	I-BET151	-0.056568555	0.145504484	79792
GSDMD	IC-87114	-0.161637852	0.00140618	79792
GSDMD	IPR-456	0.011477532	0.956219846	79792
GSDMD	ISOX	0.028665118	0.490116588	79792
GSDMD	IU1	0.027973776	0.790129916	79792
GSDMD	JQ-1	-0.022127066	0.595997978	79792
GSDMD	JW-480	-0.009415554	0.966580852	79792
GSDMD	JW-55	0.175795453	0.141550713	79792
GSDMD	JW-74	0.018838123	0.866491464	79792
GSDMD	KH-CB19	0.022936493	0.855558133	79792
GSDMD	KHS101	0.024751609	0.597149812	79792
GSDMD	KPT185	0.041953931	0.386998979	79792
GSDMD	KU 0060648	-0.078887711	0.054050644	79792
GSDMD	KU-0063794	0.021166278	0.637414463	79792
GSDMD	KU-55933	-0.076755954	0.075309257	79792
GSDMD	KU-60019	-0.042679866	0.305326783	79792
GSDMD	KW-2449	-0.016718953	0.695667677	79792
GSDMD	KX2-391	0.052252869	0.190383301	79792
GSDMD	Ki8751	0.043504772	0.35446434	79792
GSDMD	Ko-143	0.003596595	0.939306715	79792
GSDMD	L-685458	-0.01064762	0.894532173	79792
GSDMD	LE-135	-0.047239913	0.299456592	79792
GSDMD	LRK2-IN-1	0.002462897	0.963334657	79792
GSDMD	LY-2157299	-0.077064293	0.744544251	79792
GSDMD	LY-2183240	0.020023652	0.625727531	79792
GSDMD	MG-132	0.179376459	0.016275876	79792
GSDMD	MGCD-265	-0.028177038	0.505555945	79792
GSDMD	MI-1	0.014924135	0.895007684	79792
GSDMD	MI-2	0.111821388	0.088984276	79792
GSDMD	MK-0752	0.008074927	0.932078433	79792
GSDMD	MK-1775	-0.056070973	0.16775239	79792
GSDMD	MK-2206	-0.002136279	0.969451502	79792
GSDMD	ML006	0.036007069	0.524393449	79792
GSDMD	ML029	0.028653633	0.558741959	79792
GSDMD	ML031	0.097714171	0.022816363	79792
GSDMD	ML050	0.054571817	0.216337391	79792

GSDMD	ML083	0.038124032	0.763040244	79792
GSDMD	ML162	0.062607397	0.14255229	79792
GSDMD	ML203	-0.002909823	0.966236352	79792
GSDMD	ML210	0.009264288	0.84612494	79792
GSDMD	ML239	0.073008668	0.087949158	79792
GSDMD	ML258	0.018222474	0.885851264	79792
GSDMD	ML311	-0.017137287	0.682879008	79792
GSDMD	ML312	-0.084711883	0.961818313	79792
GSDMD	ML320	-0.110493894	0.011552376	79792
GSDMD	ML334 diastereomer	0.052523283	0.476552229	79792
GSDMD	MLN2238	-0.040244146	0.332446683	79792
GSDMD	MLN2480	0.03834717	0.747603199	79792
GSDMD	MST-312	0.106055291	0.006081283	79792
GSDMD	Mdivi-1	-0.057781354	0.180607836	79792
GSDMD	Merck60	-0.025547515	0.537572819	79792
GSDMD	N9-isopropylolomoucine	-0.046265519	0.277681014	79792
GSDMD	NPC-26	-0.009711878	0.956684069	79792
GSDMD	NSC 74859	0.000382203	0.996382579	79792
GSDMD	NSC19630	-0.025027835	0.644549071	79792
GSDMD	NSC23766	-0.08393003	0.039719286	79792
GSDMD	NSC30930	0.018451329	0.836935791	79792
GSDMD	NSC48300	-0.017153906	0.691409262	79792
GSDMD	NSC632839	0.002931908	0.949072149	79792
GSDMD	NSC95397	-0.028358873	0.522661574	79792
GSDMD	NVP-231	-0.051783414	0.201373371	79792
GSDMD	NVP-ADW742	0.040483007	0.396534005	79792
GSDMD	NVP-BE2235	0.05644693	0.280033278	79792
GSDMD	NVP-BSK805	-0.097849809	0.013807371	79792
GSDMD	NVP-TAE684	0.008775279	0.883083513	79792
GSDMD	O-6-benzylguanine	-0.057208386	0.662781702	79792
GSDMD	OSI-027	0.005853992	0.911975601	79792
GSDMD	OSI-930	-0.060388057	0.186193049	79792
GSDMD	PAC-1	0.018131241	0.680756901	79792
GSDMD	PD 153035	-0.039646218	0.536932957	79792
GSDMD	PD318088	-0.085455443	0.058211949	79792
GSDMD	PDMP	-0.022015388	0.646519659	79792
GSDMD	PF-184	-0.012877223	0.770901412	79792
GSDMD	PF-3758309	0.05363774	0.364988366	79792
GSDMD	PF-4800567 hydrochloride	-0.064373023	0.999586205	79792
GSDMD	PF-543	0.0027868	0.960453866	79792
GSDMD	PF-573228	-0.02077717	0.640859071	79792
GSDMD	PF-750	0.082735007	0.075822384	79792
GSDMD	PHA-793887	-0.038570032	0.332819059	79792
GSDMD	PI-103	0.076390286	0.066697796	79792
GSDMD	PIK-93	-0.049563264	0.253470497	79792
GSDMD	PL-DI	-0.040082423	0.324418702	79792
GSDMD	PLX-4720	-0.075571726	0.237715303	79792
GSDMD	PRIMA-1	-0.015044776	0.731098524	79792
GSDMD	PRIMA-1-Met	-0.031195859	0.697673871	79792
GSDMD	PRL-3 inhibitor I	0.053607551	0.663629454	79792
GSDMD	PX-12	-0.011509017	0.785429611	79792
GSDMD	PYR-41	0.053139653	0.322916659	79792
GSDMD	QS-11	-0.003056008	0.995295912	79792
GSDMD	QW-BI-011	0.014401641	0.898841974	79792
GSDMD	R428	-0.061778836	0.241576571	79792
GSDMD	RAF265	-0.080903613	0.130216042	79792
GSDMD	RG-108	0.052251367	0.262836915	79792
GSDMD	RITA	-0.091061591	0.027844605	79792
GSDMD	RO4929097	-0.02551462	0.767684035	79792
GSDMD	Repligen 136	-0.004905265	0.924202726	79792
GSDMD	SB-225002	0.047694727	0.224963394	79792
GSDMD	SB-431542	-0.064226501	0.475881069	79792
GSDMD	SB-525334	0.134855641	0.002999403	79792
GSDMD	SB-743921	0.026123214	0.517087637	79792
GSDMD	SCH-529074	0.11857199	0.007670483	79792
GSDMD	SCH-79797	0.045391155	0.268550817	79792
GSDMD	SGX-523	0.082008339	0.131816273	79792

GSDMD	SID 26681509	-0.042390663	0.382358042	79792
GSDMD	SJ-172550	-0.068963971	0.497221034	79792
GSDMD	SKI-II	0.032416955	0.509404315	79792
GSDMD	SMER-3	0.011205101	0.834326121	79792
GSDMD	SN-38	-0.053772258	0.248592248	79792
GSDMD	SNS-032	-0.047659599	0.268883268	79792
GSDMD	SNX-2112	-0.103428693	0.006065929	79792
GSDMD	SR-II-138A	-0.018491427	0.645014927	79792
GSDMD	SR1001	0.035838578	0.638984575	79792
GSDMD	SR8278	-0.090161203	0.802895656	79792
GSDMD	SRT-1720	-0.02570952	0.609156989	79792
GSDMD	STF-31	0.042334705	0.328906171	79792
GSDMD	SU11274	0.001854188	0.969705553	79792
GSDMD	SZ4TA2	0.100492353	0.318596242	79792
GSDMD	StemRegenin 1	-0.009969899	0.82906703	79792
GSDMD	TG-100-115	-0.018069723	0.773489979	79792
GSDMD	TG-101348	-0.130558863	0.000909668	79792
GSDMD	TGX-221	-0.087961872	0.153068998	79792
GSDMD	TPCA-1	-0.095846448	0.015366257	79792
GSDMD	TW-37	0.075992913	0.063033701	79792
GSDMD	UNC0321	-0.008155315	0.959265245	79792
GSDMD	UNC0638	0.015297057	0.75894044	79792
GSDMD	VAF-347	0.02987593	0.683080106	79792
GSDMD	VER-155008	-0.051729029	0.234387463	79792
GSDMD	VU0155056	-0.014556645	0.978654209	79792
GSDMD	WAY-362450	0.002826808	0.99852118	79792
GSDMD	WP1130	0.037724728	0.384024652	79792
GSDMD	WZ4002	-0.021010597	0.810966112	79792
GSDMD	WZ8040	-0.001193695	0.986975982	79792
GSDMD	XL765	0.050729056	0.391659331	79792
GSDMD	YK 4-279	0.001505751	0.973169441	79792
GSDMD	YM-155	0.087006769	0.062099883	79792
GSDMD	ZSTK474	0.015398107	0.810910622	79792
GSDMD	abiraterone	0.108567423	0.408596593	79792
GSDMD	afatinib	-0.094788867	0.036352377	79792
GSDMD	alisertib	0.022890697	0.594349632	79792
GSDMD	alvocidib	0.072725483	0.223703027	79792
GSDMD	apicidin	-0.001033933	0.981651169	79792
GSDMD	austocystin D	0.057549966	0.23188628	79792
GSDMD	avicin D	-0.030503104	0.778101585	79792
GSDMD	avrainvillamide	-0.011007173	0.850487867	79792
GSDMD	axitinib	0.058248562	0.149804365	79792
GSDMD	azacitidine	-0.033298527	0.516023627	79792
GSDMD	bafilomycin A1	-0.267356578	0.51907984	79792
GSDMD	barasertib	0.006555359	0.888043146	79792
GSDMD	bardoxolone methyl	-0.017609682	0.708340142	79792
GSDMD	belinostat	0.113115087	0.044261367	79792
GSDMD	bendamustine	0.014229582	0.771489925	79792
GSDMD	betulinic acid	0.002834931	0.992976756	79792
GSDMD	bexarotene	0.025542469	0.592444157	79792
GSDMD	birinapant	-0.179036613	0.000271755	79792
GSDMD	blebbistatin	-0.025854726	0.979397912	79792
GSDMD	bleomycin A2	-0.073886075	0.15907731	79792
GSDMD	bortezomib	-0.008169167	0.858948796	79792
GSDMD	bosutinib	-0.164706066	0.000032448	79792
GSDMD	brefeldin A	0.043816299	0.352935744	79792
GSDMD	brivanib	-0.013171496	0.774058445	79792
GSDMD	cabozantinib	0.016457856	0.781380841	79792
GSDMD	canertinib	-0.088825815	0.046657046	79792
GSDMD	cediranib	0.025394807	0.867096431	79792
GSDMD	ceranib-2	0.079748313	0.038706416	79792
GSDMD	cerulenin	0.027742556	0.507758272	79792
GSDMD	chlorambucil	-0.056069995	0.169624064	79792
GSDMD	ciclopirox	-0.011964986	0.770921443	79792
GSDMD	ciclosporin	-0.03520834	0.548780107	79792
GSDMD	cimetidine	0.041661353	0.977681146	79792
GSDMD	clofarabine	-0.108029465	0.004161596	79792

GSDMD	crizotinib	-0.054863476	0.177830512	79792
GSDMD	cucurbitacin I	0.042128887	0.335769793	79792
GSDMD	curcumin	-0.024415818	0.565042627	79792
GSDMD	cyanoguanoline 11	-0.028276831	0.78910952	79792
GSDMD	cyclophosphamide	-0.034764886	0.993392039	79792
GSDMD	cytarabine hydrochloride	-0.044980735	0.253981986	79792
GSDMD	cytochalasin B	0.032253432	0.570207753	79792
GSDMD	dabrafenib	-0.049883471	0.540370339	79792
GSDMD	dacarbazine	-0.111536067	0.004043326	79792
GSDMD	daporinad	0.095627079	0.030807409	79792
GSDMD	darinaparsin	0.009517025	0.907834245	79792
GSDMD	dasatinib	-0.17692875	0.000012916	79792
GSDMD	decitabine	-0.097026752	0.010732465	79792
GSDMD	dexamethasone	-0.06566771	0.125063932	79792
GSDMD	dinaciclib	0.078265	0.17785314	79792
GSDMD	docetaxel	-0.014386422	0.83764393	79792
GSDMD	doxorubicin	-0.007180981	0.866008297	79792
GSDMD	elocalcitol	-0.045575439	0.260708084	79792
GSDMD	entinostat	0.056859703	0.155776577	79792
GSDMD	epigallocatechin-3-monogallate	-0.054714266	0.245209111	79792
GSDMD	erastin	0.035922056	0.441511639	79792
GSDMD	erismodegib	0.088543012	0.190441053	79792
GSDMD	erlotinib	-0.10912794	0.009778351	79792
GSDMD	etomoxir	0.014459395	0.980957667	79792
GSDMD	etoposide	-0.018824458	0.652323354	79792
GSDMD	figulimod	-0.05917168	0.146519012	79792
GSDMD	fluorouracil	-0.066122959	0.09428308	79792
GSDMD	fluvastatin	0.028907075	0.626842568	79792
GSDMD	foretinib	0.034642607	0.456774486	79792
GSDMD	fulvestrant	0.001123068	0.998907876	79792
GSDMD	fumonisin B1	-0.145908243	0.002251116	79792
GSDMD	gefitinib	-0.109122527	0.01624926	79792
GSDMD	gemcitabine	-0.026147014	0.546293699	79792
GSDMD	gossypol	0.102124353	0.011062118	79792
GSDMD	hyperforin	0.105102801	0.150259544	79792
GSDMD	ibrutinib	0.009895679	0.889357591	79792
GSDMD	ifosfamide	0.022811258	0.925013739	79792
GSDMD	imatinib	-0.094035161	0.024608251	79792
GSDMD	importazole	-0.01657479	0.826481121	79792
GSDMD	indisulam	0.016215487	0.716941942	79792
GSDMD	isoevodiamine	0.047190922	0.234594313	79792
GSDMD	isoliquiritigenin	0.020964366	0.833643421	79792
GSDMD	isonicotinohydroxamic acid	0.058642207	0.96369176	79792
GSDMD	istradefylline	0.034259823	0.858452592	79792
GSDMD	itraconazole	-0.005432093	0.957495544	79792
GSDMD	lapatinib	-0.056016465	0.225090717	79792
GSDMD	lenvatinib	0.058633309	0.201255083	79792
GSDMD	leptomycin B	-0.050755734	0.191362718	79792
GSDMD	linifanib	0.002421046	0.957072794	79792
GSDMD	linsitinib	0.059628135	0.178281076	79792
GSDMD	lomeguatrib	-0.029976165	0.621808624	79792
GSDMD	lovastatin	-0.026266708	0.653285203	79792
GSDMD	manumycin A	-0.058860805	0.134961402	79792
GSDMD	marinopyrrole A	0.097262612	0.056489898	79792
GSDMD	masitinib	0.00940636	0.848534383	79792
GSDMD	methotrexate	-0.038396293	0.37763418	79792
GSDMD	methylstat	-0.023687587	0.661871764	79792
GSDMD	mitomycin	0.053542481	0.18427459	79792
GSDMD	momelotinib	-0.073084883	0.078100389	79792
GSDMD	myricetin	0.077955669	0.451677634	79792
GSDMD	myriocin	0.065067085	0.895026002	79792
GSDMD	nakiterpiosin	0.006503616	0.88457452	79792
GSDMD	narciclasine	-0.059909179	0.130513497	79792
GSDMD	navitoclax	-0.014147321	0.778640235	79792
GSDMD	necrostatin-1	-0.048765868	0.317787657	79792
GSDMD	necrostatin-7	0.079303092	0.075163696	79792
GSDMD	necrosulfonamide	-0.006994716	0.898287687	79792

GSDMD	nelarabine	-0.007990443	0.987176714	79792
GSDMD	neopeltolide	0.002384875	0.985179188	79792
GSDMD	neratinib	-0.088011223	0.038175564	79792
GSDMD	neuronal differentiation inducer III	0.053234052	0.182661899	79792
GSDMD	niclosamide	0.136160004	0.00089372	79792
GSDMD	nilotinib	0.029114045	0.754349049	79792
GSDMD	nintedanib	-0.008970435	0.902753699	79792
GSDMD	nutlin-3	0.04341184	0.310890781	79792
GSDMD	obatoclax	0.013286253	0.763181689	79792
GSDMD	olaparib	0.044446136	0.295433815	79792
GSDMD	oligomycin A	0.110179385	0.005441281	79792
GSDMD	omacetaxine mepesuccinate	0.046043439	0.33774494	79792
GSDMD	ouabain	0.073971531	0.056683925	79792
GSDMD	paclitaxel	-0.004831057	0.915582102	79792
GSDMD	palmostatin B	-0.102332797	0.284417843	79792
GSDMD	pandacostat	-0.030409319	0.540580181	79792
GSDMD	panobinostat	0.060940906	0.117788543	79792
GSDMD	parbendazole	0.000919699	0.982718888	79792
GSDMD	parthenolide	0.135520669	0.00741766	79792
GSDMD	pazopanib	-0.003065705	0.948143214	79792
GSDMD	pevonedistat	-0.095587963	0.016898716	79792
GSDMD	phloretin	0.027607425	0.51842567	79792
GSDMD	pifithrin-alpha	0.006029281	0.944490256	79792
GSDMD	pifithrin-mu	-0.005196639	0.910693812	79792
GSDMD	piperlongumine	-0.033757136	0.401555953	79792
GSDMD	pitstop2	-0.022734206	0.927723793	79792
GSDMD	pluripotin	-0.101527121	0.024741691	79792
GSDMD	procarbazine	0.004099497	0.988670752	79792
GSDMD	prochlorperazine	0.002742635	0.96389292	79792
GSDMD	purmorphamine	0.021388495	0.682994372	79792
GSDMD	pyrazolanthrone	-0.086476595	0.063768634	79792
GSDMD	quizartinib	0.072993705	0.195700767	79792
GSDMD	regorafenib	0.059577043	0.231074966	79792
GSDMD	rigosertib	-0.002891406	0.950118986	79792
GSDMD	ruxolitinib	-0.098538638	0.016462956	79792
GSDMD	salermide	0.068150259	0.459529709	79792
GSDMD	saracatinib	-0.142257851	0.000710899	79792
GSDMD	selumetinib	-0.083963335	0.070913162	79792
GSDMD	semagacestat	-0.024388593	0.888711736	79792
GSDMD	serdemetan	0.029261243	0.502154852	79792
GSDMD	sildenafil	-0.013170712	0.940613911	79792
GSDMD	silmitasertib	0.000032481	0.999718736	79792
GSDMD	simvastatin	-0.025070194	0.710523699	79792
GSDMD	sirolimus	-0.021042348	0.631641417	79792
GSDMD	sitagliptin	0.008679813	0.997718377	79792
GSDMD	skepinone-L	0.047040692	0.481152355	79792
GSDMD	sorafenib	0.109229228	0.009695922	79792
GSDMD	sotrastaurin	-0.076235133	0.109244631	79792
GSDMD	spautin-1	-0.00399204	0.947352833	79792
GSDMD	staurosporine	-0.132175427	0.250672046	79792
GSDMD	sunitinib	-0.048440266	0.250515813	79792
GSDMD	tacedinaline	0.062159851	0.198197959	79792
GSDMD	tacrolimus	-0.002464647	0.96370435	79792
GSDMD	tamatinib	-0.058106112	0.456432774	79792
GSDMD	tamoxifen	0.042126216	0.542651053	79792
GSDMD	tandutinib	0.059189531	0.189813654	79792
GSDMD	tanespimycin	-0.018572134	0.76043492	79792
GSDMD	temozolomide	0.034949276	0.619087485	79792
GSDMD	temsirolimus	-0.057697601	0.382562609	79792
GSDMD	teniposide	-0.095817392	0.08195261	79792
GSDMD	thalidomide	-0.019749469	0.941978627	79792
GSDMD	tigecycline	-0.095696212	0.113913662	79792
GSDMD	tipifarnib-P1	0.040895014	0.323181474	79792
GSDMD	tipifarnib-P2	-0.11827503	0.031941102	79792
GSDMD	tivantinib	0.090556892	0.120864651	79792
GSDMD	tivozanib	-0.001122722	0.98694028	79792
GSDMD	topotecan	-0.029397328	0.471274607	79792

GSDMD	tosedostat	-0.062767878	0.151521332	79792
GSDMD	tozasertib	-0.073515987	0.701908148	79792
GSDMD	trametinib	-0.095201121	0.196077153	79792
GSDMD	tretinoin	-0.041167621	0.348590455	79792
GSDMD	triazolothiadiazine	-0.003325779	0.938779373	79792
GSDMD	trifluoperazine	-0.033421452	0.557591745	79792
GSDMD	triptolide	-0.072202381	0.071398175	79792
GSDMD	tubastatin A	0.015084689	0.838163307	79792
GSDMD	valdecoxib	0.026148588	0.546630233	79792
GSDMD	vandetanib	-0.071154619	0.150262668	79792
GSDMD	veliparib	-0.057128494	0.446611379	79792
GSDMD	vemurafenib	-0.001787195	0.983421733	79792
GSDMD	vincristine	0.043165703	0.263919995	79792
GSDMD	vorapaxar	0.003208917	0.958468537	79792
GSDMD	vorinostat	0.035503335	0.384134251	79792
GSDMD	zebularine	-0.036422481	0.390060342	79792