



<http://dergipark.gov.tr/anatolianbryology>

DOI: 10.26672/anatolianbryology.517253

Anatolian Bryology
Anadolu Briyoloji Dergisi
Research Article
e-ISSN:2458-8474 Online

The Moss Flora of Kocaçay Delta (Karacabey-Bursa) Floodplain Forest in Turkey

Serhat URSAVAŞ*¹ , Tamer KEÇELİ² 

¹Department of Forest Engineering, Faculty of Forestry, Çankırı Karatekin University, 18200, Çankırı, TURKEY

²Department of Biology, Faculty of Science, Çankırı Karatekin University, Çankırı, 18200, TURKEY

Received: 24.01.2019

Revised: 04.02.2019

Accepted: 15.02.2019

Abstract

In this study, the moss flora of Kocaçay Delta (Bursa-Karacabey) floodplain forest in Turkey were investigated in 2017. Three hundred eighty three moss samples, were collected and identified from Kocaçay-Delta. A total of 112 taxa belonging to 25 families and 60 genera were determined. In terms of taxa number, the richest six families are; Pottiaceae (26), Brachytheciaceae (15), Bryaceae (10), Hypnaceae (8), Orthotrichaceae (6), Polytrichaceae (5). In terms of genera number, the richest five genera are; *Tortula* (7), *Hypnum* (6), *Orthotrichum* (6), *Weissia* (5), *Ptychostomum* (5). 13 moss taxa are new record for (A1) square.

Key words: Moss, flora, Bursa, Karacabey, A1, Turkey.

Kocaçay Deltası Longoz Ormanlarının (Karacabey-Bursa) Karayosunu Florası

Öz

Bu çalışmada, 2017 yılları arasında Kocaçay Deltası (Bursa-Karacabey) longoz ormanlarının karayosunu florası araştırılmıştır. Kocaçay Deltasından toplanan 383 karayosunu örneğinin incelenmesi sonucu; 25 familyaya ve 60 cinsine ait 112 takson belirlenmiştir. Taksonlar açısından en zengin altı familya şu şekildedir; Pottiaceae (26), Brachytheciaceae (15), Bryaceae (10), Hypnaceae (8), Orthotrichaceae (6) ve Polytrichaceae (5)'dir. Takson sayısı bakımından en zengin beş cins; *Tortula* (7), *Hypnum* (6), *Orthotrichum* (6), *Weissia* (5) ve *Ptychostomum* (5). 13 karayosunu taksonu A1 karesi için yeni kayıttır.

Anahtar kelimeler: Karayosunu, flora, Bursa, Karacabey, A1, Türkiye.

* Corresponding author: serhatursavas@gmail.com

© 2019 All rights reserved / Tüm hakları saklıdır.

To cite this article: Ursavaş S. Keçeli T. 2019. The Moss Flora of Kocaçay Delta (Karacabey-Bursa) Floodplain Forests in Turkey. *Anatolian Bryology*. 5:1, 22-34.



This work is licensed under a Creative Commons Attribution-NonCommercial 4.0 International License.

1. Introduction

Owing to rapid population growth and human activities, coastal areas have very intensively been used for tourism, agricultural purposes, the industry sector, and therefore, they have deteriorated irreparably. Coastal areas are also affected by some natural disasters and events, such as extreme storm waves, tsunamis, tides and sea level changes. Ecologically, sustainability of coastal areas is crucial. In particular, lagoon groups, which are constitute about 13 percent of the coasts in the world, are very valuable ecosystems (Saçın, 2010).

Wenger et al. (1990) accentuated the importance and primacy of the studies to characterize the useful structures and plant diversity of this forest owing to decrease in the area for the longoze forest ecosystem in Europe. Additionally, wooded wetlands as a forest stock are the important component to define the bryophyte biodiversity (Schuck et al., 1994; Kavgacı et al., 2007; Işın and Ursavaş, 2018). Even though Kocaçay Delta is a noteworthy area in terms of ecosystem variation, no bryo-floristic study have been conducted in this area until now.

1.1 Study area

Kocaçay Delta (Karacabey-Bursa-) Floodplain Forest has an area of 42.000 hectares. Kocaçay Delta, approximately 25 kilometers north of Bursa-Karacabey, is located on the southern coast of the Marmara Sea. Delta has a great importance for the natural life since there are two shallow lagoons named Dalyan and Arapçiftliği, floodplain forest, lake, swamp, large sand dunes in the area (URL1). There is a wildlife development area (140.000 ha) with hills covered with deciduous forests in the south of the delta (Eken et al., 2006). In this wildlife area, there are Celal Acar Wildlife Rescue and Rehabilitation Training Center (28.611 ha.), Karadere-Pheasant Production Station (annual

capacity 5.000) and Orhaneli public hunting area (4.955 ha). Dalyan and Poyraz lakes, which are located in the western part of the Delta and have a total area of 194 hectares, are fed by Malic Creek. There are also reeds covering 600 ha area, floodplain forests consisting of ash, alder and willows spread over an area of 730 hectares, and a large dune band with a wide variety of flora in the western part of the Delta (URL2).

Kocaçay Delta ecosystem diversity in terms of importance in Turkey has a place (Figure 1). The floodplains have many different ecosystems, including open areas, meadows, pastures, dunes, especially deciduous and coniferous forest areas. The vegetation encountered in the area is as follows: *Acer campestre*, *Alnus glutinosa*, *Arbutus unedo*, *Asplenium scolopendrium*, *Cardamine bulbifera*, *Carpinus orientalis*, *C. betulus*, *Castanea sativa*, *Centaurium erythraea*, *Cistus creticus*, *Cirsium hypoleucum*, *Cota tinctoria*, *Cornus sanguinea*, *Corylus avellana*, *Erica arborea*, *Ficus carica*, *Fraxinus angustifolia*, *F. ornus*, *Daphne pontica*, *Lavandula pedunculata* subsp. *cariensis*, *Periploca graeca*, *Paliurus spina-christi*, *Sarcopoterium spinosum*, *Smilax excelsa*, *Ruscus aculeatus*, *Ruscus hypoglossum*, *Populus alba*, *Leucojum aestivum*, *Phillyrea latifolia*, *Hypericum calycinum*, *Hypericum perforatum*, *Quercus coccifera*, *Q. frainetto*, *Q. pubescens*, *Q. cerris*, *Vitis sylvestris*, *Laurus nobilis*, *Pistacia terebinthus*, *Pteridium aquilinum*, *Pinus brutia*, *P. pinea*, *Styrax officinalis*, *Viburnum tinus*, *Olea eropaea*, *Calicotome villosa*, *Spartium junceum*, *Osyris alba*, *Hedera helix*, *Ilex colchica*, *Prunella vulgaris*, *Fagus orientalis*, *Populus tremula*, *Laurocerasus officinalis*, *Silene compacta*, *Tilia tomentosa*, *Mespilus germanica*, *Phytolacca americana*, *Sambucus nigra*, *Asplenium scolopendrium*, *Sorbus torminalis*, *Polypodium vulgare*, *Taxus baccata*, *Styrax officinalis*.

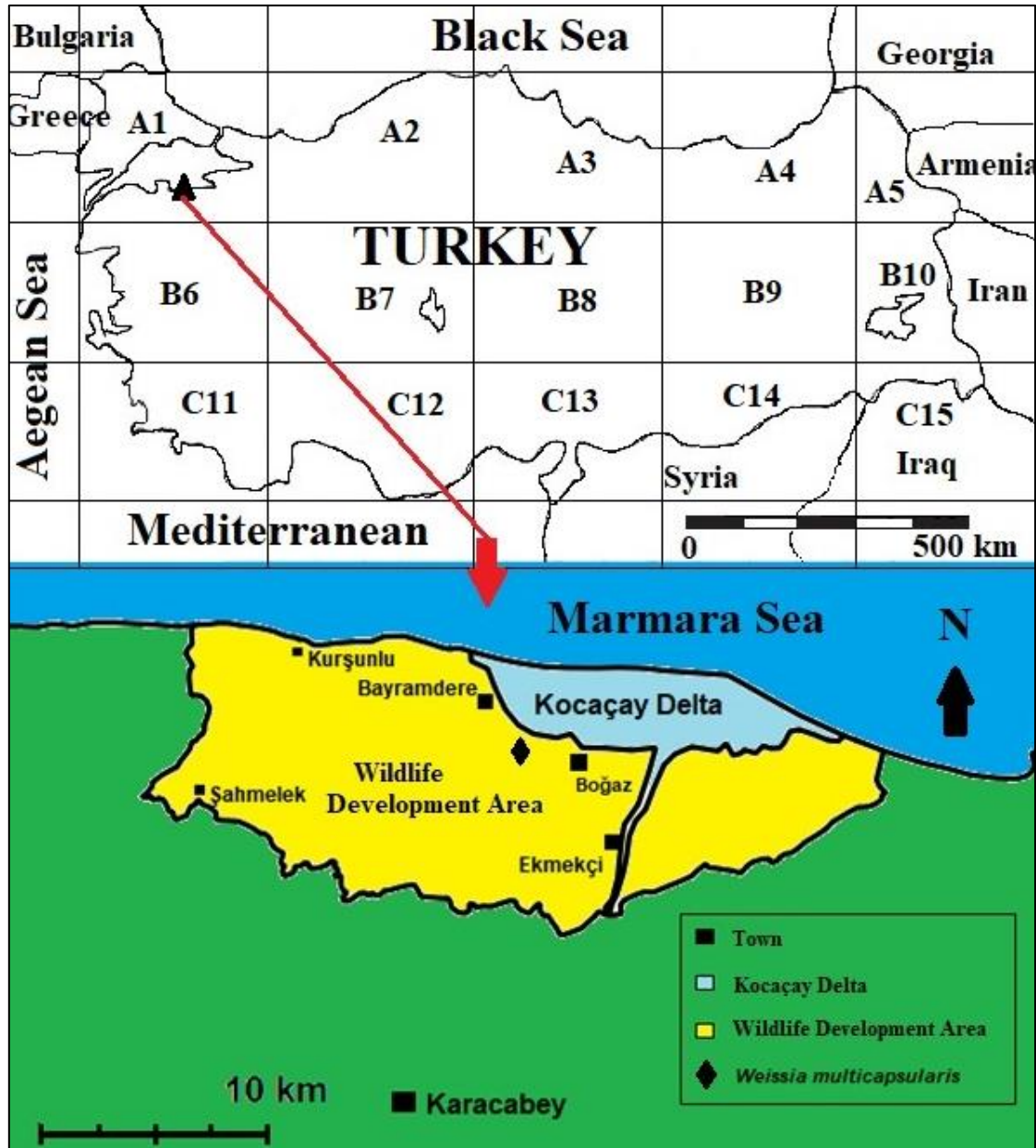


Figure 1. The location of the research area (▲) according to the grid system of Turkey (Henderson, 1961), and locality of *Weissia multicapsularis* (◆).

2. Materials and Methods

This study was carried out in Kocayağ delta longoze forest of Turkey in 2017. During the bryological survey held in the region of Bursa-Karacabey specimens were collected by S. URSAVAŞ and T. KEÇELİ. A total of 383 specimens from 49 localities were collected and kept in the private Herbarium of Serhat Ursavaş at Çankırı Karatekin University, Faculty of Forestry. *Weisse multicapsularis* with this study were identified as new records for Turkey (Ursavaş and Keçeli, 2018).

The moss samples were scrutinized with Leica EZ4 HD stereomicroscope and Olympus BX50 light microscope. Identifications were determined by consulting various keys (Lawton 1971; Crum, 1973; Crum and Anderson, 1981; Smith, 1980, 2004; Watson, 1981; Pedrotti, 2001, 2006; Heyn and Herrnsstadt, 2004; Greven, 2003; Lüth, 2006a, 2006b, 2006c, 2007, 2008, 2009, 2010).

According to Henderson (1961) grid square, Kocayağ Delta floodplain forests are located in A1 square. Two bryophyte studies have been carried out in Bursa. The first study; was carried

out by Çetin (1999) “The Moss Flora of the Uludağ National Park (Bursa/Turkey). The second study was carried out by Can Gözcü et al. (2018) “Epiphytic bryophyte vegetation of the Samanlı Mountains (Sakarya-Kocaeli-Yalova-Bursa) in Northwest Turkey”.

3. Findins

3.1. Abbreviations:

■: Second record for Turkish bryophyte flora

*: New record for A1 grid square

** : New record for Bursa

U: Collection number for Serhat URSAVAŞ

Loc: Locality number

3.2. List of collections site

- 1) Longoz coast, 35T0624870, 4472397, *Fraxinus angustifolia*, sand-reeds field, 4 m, 28.04.2017.
- 2) Longoz-Dalyan lake, 35T0626566, 4472511, *Paliurus spina-christi*, sand-reeds and bushes field, 3 m, 28.04.2017.
- 3) Longoz-bird observation tower, 35T0624120, 4472115, *Fraxinus angustifolia*, *Alnus glutinosa*, reeds and bushes field, 3 m, 29.04.2017.
- 4) Longoze-northern part, 35T0622245, 4471895, *Fraxinus angustifolia*, swamp-reeds field, 5 m, 29.04.2017.
- 5) Longoze, 35T0621526, 4471631, *Fraxinus angustifolia*, *Populus alba*, openness area, 9 m, 29.04.2017.
- 6) Dalyan lake, 35T0622123, 4471593, *Fraxinus angustifolia*, openness-reeds field, 3 m, 29.04.2017.
- 7) The inland swamp, 35T0620746, 4471574, *Fraxinus angustifolia*, *Laurus nobilis*, *Paliurus spina-christi*, reeds and bushes field, 5 m, 29.04.2017.
- 8) Hayırlar district, 35T0624636, 4463020, *Pinus brutia*, *Quercus coccifera*, *Phillyrea latifolia*, *Paliurus spina-christi*, *Arbutus unedo*, *Erica arborea*, 30 m, 30.04.2017.
- 9) Ballıkaya district, 35T0625443, 4466986, *Paliurus spina-christi*, *Styrax officinalis*, *Arbutus unedo*, *Quercus coccifera*, *Laurus nobilis*, *Cornus sanguinea*, *Pistacia terebinthus*, 33 m, 30.04.2017.
- 10) Ekinli district, 35T0628370, 4469124, *Tilia* sp., *Paliurus spina-christi*, *Styrax officinalis*, *Arbutus unedo*, *Quercus coccifera*, *Fraxinus ornus*, *Laurus nobilis*, *Cornus sanguinea*, *Carpinus orientalis*, *Pistacia terebinthus*, *Erica arborea*, 47 m, 30.04.2017.
- 11) Arapçiftliği, 35T0629993, 4470062, *Fraxinus angustifolia*, swamp-reeds field, 0 m, 01.05.2017.
- 12) Mesudiye district, 35T0634631, 4470177, *Phillyrea latifolia*, *Laurus nobilis*, *Ficus carica*, seaside, 7 m, 01.05.2017.
- 13) Between Mesudiye and Ballıkaya district, 35T0632003, 4470264, 18 m, *Pinus pinea*, *Fraxinus ornus*, *Phillyrea latifolia*, *Styrax officinalis*, *Laurus nobilis*, wooded area, 18 m, 01.05.2017.
- 14) South of longoze, 35T0625537, 4469238, *Quercus cerris*, *Quercus pubescens*, *Phillyrea latifolia*, *Olea eropaea*, *Paliurus spina-christi*, *Styrax officinalis*, *Arbutus unedo*, *Arbutus andrachne*, *Quercus coccifera*, *Fraxinus ornus*, *Laurus nobilis*, *Cornus sanguinea*, *Carpinus orientalis*, *Pistacia terebinthus*, *Spartium junceum*, *Daphne pontica*, *Erica arborea*, Forest and Pseudo-maquis, 12 m, 13.06.2017.
- 15) Boğazköy district, 35T0623334, 4469115, *Quercus robur*, *Quercus cerris*, *Fraxinus angustifolia*, *Paliurus spina-christi*, Forest area, 2 m, 13.06.2017.
- 16) Boğazköy district, 35T0623150, 4469223, *Fraxinus angustifolia*, *Populus alba*, *Quercus cerris*, *Crataegus* sp., *Laurus nobilis*, swamp area, 1 m, 14.06.2017.
- 17) Boğazköy district, 35T0623323, 4469347, *Fraxinus angustifolia*, *Paliurus spina-christi*, bush and grassland area, 0 m, 14.06.2017.
- 18) Boğazköy district, 35T0623415, 4469402, *Fraxinus angustifolia*, thickets, meadows, swamps, wetlands, 0 m, 14.06.2017.
- 19) South of Bogazköy, 35T0623117, 4468858, *Castanea sativa*, *Carpinus betulus*, *Phillyrea latifolia*, *Styrax officinalis*, *Ilex colchica*, *Laurus nobilis*, *Daphne pontica*, *Ficus carica*, Forest area, 25 m, 14.06.2017.
- 20) South of Bogazköy, 35T0623097, 4468713, *Carpinus betulus*, *Castanea sativa*, *Styrax officinalis*, *Ilex colchica*, *Laurus nobilis*, *Daphne pontica*, Forest area, 59 m, 14.06.2017.
- 21) Celal Acar Wildlife Rescue and Rehabilitation Center, Ovakorusu Bear Shelter, 35T0620431, 4469093, *Pinus pinea* plantation forest, 12 m, 14.06.2017.
- 22) Şahmelek district, 35T0605896, 4465671, *Carpinus betulus*, *Fagus orientalis*, 459 m, 15.06.2017.
- 23) Between Şahmelek and Kurşunlu district, 35T0607293, 4467186, *Fagus orientalis*, *Carpinus betulus*, *Alnus glutinosa*, *Castanea sativa*, *Populus tremula*, *Erica arborea*, *Laurocerasus officinalis*, 504 m, 15.06.2017.
- 24) Between Şahmelek and Kurşunlu district, 35T0608350, 4466943, *Fagus orientalis*, *Carpinus betulus*, *Castanea sativa*, *Alnus*

- glutinosa*, *Populus tremula*, *Erica arborea*, *Daphne pontica*, 498 m, 15.06.2017.
- 25) Between Şahmelek and Kurşunlu district, 35T0608379, 4466981, *Fagus orientalis*, *Carpinus betulus*, *Castanea sativa*, *Alnus glutinosa*, *Populus tremula*, *Erica arborea*, *Daphne pontica*, 487 m, 15.06.2017.
- 26) Between Şahmelek and Kurşunlu district, 35T0609283, 4466650, *Castanea sativa*, *Fagus orientalis*, *Carpinus betulus*, *Daphne pontica*, 448 m, 15.06.2017.
- 27) Between Şahmelek and Kurşunlu district, 35T0606795, 4468164, *Fagus orientalis ormani*, *Daphne pontica*, 690 m, 15.06.2017.
- 28) Between Şahmelek and Kurşunlu district, 35T0606758, 4469698, *Fagus orientalis ormani*, *Laurocerasus officinalis*, *Ilex colchica*, *Sambucus nigra*, 769 m, 15.06.2017.
- 29) Between Şahmelek and Kurşunlu district, 35T0607757, 4470829, *Fagus orientalis*, *Carpinus betulus*, *Sambucus nigra*, 567 m, 15.6.2017.
- 30) Kurşunlu district, 35T0607742, 4471178, *Fagus orientalis*, *Carpinus betulus*, *Castanea sativa*, *Populus tremula*, *Erica arborea*, *Daphne pontica*, *Sambucus nigra*, 436 m, 15.06.2017.
- 31) Yeniköy district, 35T0611295, 4472668, *Fagus orientalis*, *Castanea sativa*, *Carpinus betulus*, 8 m, 15.06.2017.
- 32) Yarış district, 35T0615491, 4462380, *Carpinus betulus*, *Sorbus torminalis*, *Daphne pontica*, 389 m, 16.06.2017.
- 33) Güngörmez district, 35T0614686, 4464451, *Fagus orientalis ormani*, *Quercus cerris*, *Quercus frainetto*, *Carpinus betulus*, *Castanea sativa*, *Sorbus torminalis*, *Populus tremula*, *Erica arborea*, *Daphne pontica*, 461 m, 16.06.2017.
- 34) Güngörmez district, 35T0615160, 4465961, *Fagus orientalis ormani*, *Carpinus betulus*, *Castanea sativa*, *Sorbus torminalis*, *Populus tremula*, *Erica arborea*, *Daphne pontica*, *Sambucus ebulus*, *Hypericum calycinum*, *Cirsium hypoleucum*, 452 m, 16.06.2017.
- 35) Between Güngörmez and Yarış district, 35T0614729, 4467594, *Fagus orientalis ormani*, *Carpinus orientalis*, *Castanea sativa*, *Sorbus torminalis*, *Laurocerasus officinalis*, *Erica arborea*, *Daphne pontica*, 472 m, 16.06.2017.
- 36) Between Güngörmez and Yarış district, 35T0614860, 4468612, *Fagus orientalis*, *Carpinus betulus*, *Castanea sativa*, *Sorbus torminalis*, *Laurocerasus officinalis*, *Erica arborea*, *Daphne pontica*, 454 m, 16.06.2017.
- 37) Yarış district, 35T0614673, 4469097, *Fagus orientalis ormani*, *Carpinus betulus*, *Castanea sativa*, *Sorbus torminalis*, *Laurocerasus officinalis*, *Erica arborea*, *Vaccinium arctostaphylos*, 491 m, 16.06.2017.
- 38) Çeşme district, 35T0616828, 4461887, *Quercus cerris*, *Quercus frainetto*, *Carpinus betulus*, *Sorbus torminalis*, *Erica arborea*, *Daphne pontica*, *Cistus creticus*, 387 m, 16.06.2017.
- 39) Çamlıca district, 35T0626459, 4463108, *Pinus brutia*, *Quercus pubescens*, *Q. cerris*, *Phillyrea latifolia*, *Pistacia terebinthus*, *Arbutus unedo*, *Laurus nobilis*, *Erica arborea*, *Daphne pontica*, 46 m, 16.06.2017.
- 40) Wind Power Plant, 35T0633853, 4467980, *Quercus pubescens*, *Q. cerris*, *Q. coccifera*, *Phillyrea latifolia*, *Styrax officinalis*, *Pistacia terebinthus*, *Pyrus elaeagnifolia*, *Paliurus spina-christi*, *Spartium junceum*, 309 m, 16.06.2017.
- 41) Between Boğazköy and Yenice district, 35T0619771, 4469010, *Pinus brutia*, *Quercus cerris*, *Q. frainetto*, *Q. coccifera*, *Acer campestre*, *Carpinus betulus*, *Styrax officinalis*, *Populus tremula*, *Paliurus spina-christi*, *Erica arborea*, *Cistus creticus*, *Phillyrea latifolia*, *Pistacia terebinthus*, *Arbutus unedo*, *Laurus nobilis*, *Erica arborea*, *Ruscus aculeatus*, 44 m, 17.06.2017.
- 42) Bayramdere district, 35T0618415, 4467705, *Fagus orientalis*, *Carpinus betulus*, *Castanea sativa*, *Quercus frainetto*, *Q. cerris*, *Platanus orientalis*, *Alnus glutinosa*, *Acer campestre*, *Styrax officinalis*, *Populus tremula*, *Paliurus spina-christi*, *Erica arborea*, *Cistus creticus*, *Phillyrea latifolia*, *Laurus nobilis*, *Pistacia terebinthus*, *Arbutus unedo*, *Laurus nobilis*, *Erica arborea*, 166 m, 17.06.2017.
- 43) Bayramdere dam pond, 35T0617857, 4466964, *Fagus orientalis*, *Carpinus betulus*, *Castanea sativa*, *Quercus cerris*, *Platanus orientalis*, *Laurocerasus officinalis*, *Acer campestre*, *Styrax officinalis*, *Populus tremula*, *Paliurus spina-christi*, *Erica arborea*, *Laurus nobilis*, *Pistacia terebinthus*, 244 m, 17.06.217.
- 44) Bayramdere dam pond, 35T0617244, 4465671, *Quercus cerris*, *Q. frainetto*, *Fagus orientalis*, *Carpinus betulus*, 325 m, 17.06.2017.
- 45) Çeşme district, 35T0617182, 4466355, *Fagus orientalis*, *Carpinus betulus*, *Castanea sativa*, *Erica arborea*, *Cistus creticus*, 315 m, 17.06.2017.
- 46) The northern part of Bayramdere, 35T0616657, 4470496, *Castanea sativa*,

Carpinus betulus, *Fagus orientalis*, *Platanus orientalis*, *Taxus baccata*, *Corylus avellana*, *Styrax officinalis*, *Laurocerasus officinalis*, *Laurus nobilis*, *Populus tremula*, *Arbutus unedo*, *Erica arborea*, *Sambucus ebulus*, 152 m, 17.06.2017.

47) Bayramdere district, 35T0615043, 4470694, *Fagus orientalis*, *Castanea sativa*, *Carpinus betulus*, *Platanus orientalis*, *Ficus carica*, *Pteridium aquilinum*, *Sorbus torminalis*, *Erica arborea*, 344 m, 17.06.2017.

48) Bayramdere district, 35T0614407, 4471119, *Fagus orientalis*, *Castanea sativa*, *Carpinus betulus*, *Daphne pontica*, 430 m, 17.06.2017.

49) Between Yeniköy and Kurşunlu, 35T0613572, 4473027, *Laurus nobilis*, *Styrax officinalis*, 83 m, 17.06.2017.

3.3 Plant list

The bryoploristic list Nomenclature of the species follows Ros et al. (2013), Plášek et al. (2015) and Lara et al. (2016).

BRYOPHYTA Schimp.

Polytrichaceae Schwägr.

**Atrichum tenellum* (Röhl.) Bruch & Schimp.

Loc: 112, 120, on soil, U2854; U2853;

Atrichum undulatum (Hedw.) P. Beauv.

Loc: 107, 112, on soil, U2852; U2851;

Pogonatum aloides (Hedw.) P. Beauv.

Loc: 107, 112, 114, 118, on soil, U2857; U2856; U2858; U2855;

***Polytrichum formosum* Hedw.

Loc: 112, on soil, U2849;

Polytrichum juniperinum Hedw.

Loc: 129, on rock, U2850;

Funariaceae Schwägr.

Funaria hygrometrica Hedw.

95, 100, on soil, U2835; U2836;

Grimmiaceae Arn.

Grimmia pulvinata (Hedw.) Sm.

Loc: 128, on soil, U2888;

Grimmia trichophylla Grev.

Loc: 122, on concrete, U2890; Loc: 103, 109, on rock, U2892; U2891;

***Grimmia liseae* De Not.

Loc: 103, on rock, U2889;

Schistidium confertum (Funck) Bruch & Schimp.

Loc: 122, on concrete, U2887;

Fissidentaceae Schimp.

***Fissidens bryoides* Hedw.

Loc: 107, 109, 116, 117, 118, on soil, U2897; U2898; U2896; U2899; U2900;

***Fissidens taxifolius* Hedw.

Loc: 103, 107, 125, 126, 132, on soil, U2860; U2862; U2894; U2895; U2893;

**Fissidens viridulus* var. *viridulus* (Sw. ex anon.) Wahlenb.

Loc: 92, 106, on soil, U2859; U2864;

***Fissidens viridulus* var. *incurvus* (Starke ex Röhl.) Waldh.

Loc: 113, on soil, U2861;

Ditrichaceae Limpr.

**Ceratodon conicus* (Hampe) Lindb.

Loc: 129, on rock, U2903;

Ceratodon purpureus (Hedw.) Brid.

Loc: 128, on rock, U2906;

***Ditrichum heteromallum* (Hedw.) E. Britton

Loc: 94, 113, on soil, U2907; U2908;

***Pleuridium subulatum* (Hedw.) Rabenh.

Loc: 108, on soil, U2911;

Dicranaceae Schimp.

***Dicranella heteromalla* (Hedw.) Schimp.

Loc: on soil, U2902;

**Dicranella subulata* (Hedw.) Schimp.

Loc: 112, 118, on soil, U2914; U2913;

Dicranum scoparium Hedw.

Loc: 106, 117, on soil, U2909; U2910;

Rhabdoweisiaceae Limpr.

***Dicranoweisia cirrata* (Hedw.) Lindb.

Loc: 126; on oak bark, U3091;

Pottiaceae Schimp.

***Barbula convoluta* Hedw.

Loc: 119, on bark, U3064; Loc: 133, on rock, U3065;

Barbula unguiculata Hedw.

Loc: 94, 133, on soil, U3064; U3067;

Didymodon ferrugineus (Schimp. ex Besch.) M.O.Hill

Loc: 93, on concrete, U3052;

***Didymodon sinuosus* (Mitt.) Delogne

Loc: 92, on soil, U3061; Loc: 117, on bark, U3060;

***Didymodon tophaceus* (Brid.) Lisa

Loc: 105, 115, on soil, U3056; U3057;

***Gymnostomum aeruginosum* Sm.

Loc: 118, on log, U3050;

***Leptobarbula berica* (De Not.) Schimp.

Loc: 87, on soil, U3048;

**Stegonia latifolia* (Schwägr.) Venturi ex Broth.

Loc: 94, on soil, U3049;

***Syntrichia laevipila* Brid.

Loc: 85, 99, 101, on bark, U3076; U3074; U3075;

**Syntrichia latifolia* (Bruch ex Hartm.) Huebener

Loc: 101, on bark, U3045;

***Syntrichia papillosa* (Wilson) Jur.

Loc: 99, on bark, U3046;

Syntrichia ruralis var. *ruraliformis* (Besch.) Delogne

Loc: 78, on soil, U2803;

***Tortella flavovirens* (Bruch) Broth.

Loc: 87, on bark, U3047;

***Tortella squarrosa* (Brid.) Limpr.

Loc: 85, on soil, U3051;

**Tortula canescens* Mont.

Loc: 124, rock crevices, U3043;
****Tortula marginata** (Bruch & Schimp.) Spruce
 Loc: 118, on soil, U3055;
****Tortula muralis** Hedw.
 Loc: 94, 122, on concrete, U3053; U3054;
****Tortula muralis** var. *aestiva* Brid. ex Hedw.
 Loc: 110, 117, on soil, U3077; U3078;
Tortula subulata Hedw.
 Loc: 118, on soil, U3058; Loc: 128, on rock, U3059;
****Tortula truncata** (Hedw.) Mitt.
 Loc: 87, 95, on soil, U3084; U3083;
***Tortula vahliana** (Schultz) Mont.
 Loc: 89, on bark, U3044;
****Trichostomum brachydontium** Bruch
 Loc: 92, 103, 125, on soil, U3089; U3087; U3085; Loc: 94, 98, on rock, U3086; U3088;
****Weissia brachycarpa** (Nees & Hornsch.) Jur.
 Loc: 94, 106, 108, 119, on soil, U3080; U3079; U3081; U3082;
****Weissia condensata** (Voit) Lindb.
 Loc: 105, 117, 128, on soil, U3072; U3073; U3071;
****Weissia controversa** Hedw.
 Loc: 91, 104, on soil, U3070; U3069; Loc: 123, on bark, U3068;
Weissia multicapsularis (Sm.) Mitt.,
 Loc: 105, on soil, U3090;
****Weissia rutilans** (Hedw.) Lindb.
 Loc: 127, 129, on rock, U3063; U3062;
Bryaceae Schwägr.
****Bryum dichotomum** Hedw.
 Loc: 98, on soil, U2968; Loc: 128, on rock, U2967;
****Bryum gemmiparum** De Not.
 Loc: 100, on wet soil, U2962;
****Bryum subapiculatum** Hampe
 Loc: 87, 117, on soil, U2969; U2963,
Imbriobryum alpinum (Huds. ex With.) N. Pedersen
 Loc: 85, 86, 90, 106, on soil, U2977; U2978; U2979; U2976;
Ptychostomum capillare (Hedw.) Holyoak & N. Pedersen
 Loc: 88, 116, on decayed log, U2987; U2989;
 Loc: 108, 111, on soil, U2983; U2990; Loc: 87, 106, 117, U2988, U2986, U2984;
****Ptychostomum imbricatum** (Müll. Hal.) Holyoak & N. Pedersen
 Loc: 93, 88, 123, on soil, U2964; U2973; U2974;
 Loc: 106, on bark, U2975;
Ptychostomum pallens (Sw.) J.R. Spence
 Loc: 116, on bark, U2965;
****Ptychostomum pseudotriquetrum** (Hedw.) J.R.Spence & H.P.Ramsay
 Loc: 85, on soil, U2972;
Ptychostomum torquescens (Bruch & Schimp.) Ros & Mazimpaka

Loc: 93, 117, on soil, U2982; U2981; Loc: 116, on bark, U2980;
Mniaceae Schwägr.
****Epipterygium tozeri** (Grev.) Lindb.
 Loc: 104, 131, on soil, U2970; U2971;
****Plagiomnium affine** (Blandow ex Funck) T.J. Kop.
 Loc: 109, on rock, U2841;
****Plagiomnium elatum** (Bruch & Schimp.) T.J.Kop.
 Loc: 87, 109, on soil, U2844; U2842; Loc: 127, on rock, U2843;
Plagiomnium undulatum (Hedw.) T.J. Kop.
 Loc: 114, on soil, U2840;
Rhizomnium punctatum (Hedw.) T.J.Kop.
 Loc: 114, 119, 131, on soil, U2848; U2847; U2846; Loc: 114, on rock, U2845;
Orthotrichaceae Arn.
Orthotrichum affine Schrad. ex Brid.
 Loc: 91, 94, 101, 103, 106, 108, 109, 116, 119, 122, on bark, U2924; U2930; U2926; U2931; U2929; U2927; U2928; U2925; U2923; U2932;
****Orthotrichum anomalum** Hedw.
 Loc: 104, on rock, U2915;
****Orthotrichum diaphanum** Brid.
 Loc: 85, 92, 98, on bark, U2922; U2921; U2920;
****Orthotrichum lyellii** Hook. & Taylor (pulvigeria)
 Loc: 110, on bark, U2917;
***Orthotrichum patens** Bruch & Brid.
 Loc: 89, on bark, U2916;
****Orthotrichum stramineum** Hornsch. ex Brid.
 Loc: 87, 99, on bark, U2919; U2918;
Amblystegiaceae G. Roth.
Amblystegium serpens var. *juratzkanum* (Schimp.) Rau & Herv.
 Loc: 101, on bark, U2831;
****Drepanocladus aduncus** (Hedw.) Warn
 Loc: 85, on soil, U2830;
****Leptodictyum riparium** (Hedw.) Warnst.
 Loc: 90, on bark, U2833; Loc: on decayed log, U2834;
**Campylopus subulatus* Schimp. ex Milde
 Loc: 106, 121, on soil, U2901; U2912;
**Pseudoleskeella catenulata* (Brid. ex Schrad.) Kindb.
 Loc: 125, on soil, U2828;
****Pseudoleskeella rupestris** (Berggr.) Hedenäs & L. Söderstr.
 Loc: 94, on rock, U2829;
Brachytheciaceae G. Roth.
 ■ *Brachythecium capillaceum* (F.Weber & D.Mohr) Giacom.
 Loc: 93, on rock, U2995;
Brachythecium rutabulum (Hedw.) Schimp.
 Loc: 87, 88, 100, on soil, U3019, U3020; U3018;
****Cirriphyllum crassinervium** (Taylor) Loeske & M.Fleisch.

Loc: 104, on rock, U3014; Loc: 130, on log, U3013;

***Eurhynchium striatum* (Hedw.) Schimp.

Loc: 95, on soil, U3000;

***Homalothecium lutescens* (Hedw.) H. Rob.

Loc: 90, 99, 119, on bark, U3029; U3026; U3027; Loc: 130, on rock, U3028;

***Homalothecium philippeanum* (Spruce) Schimp.

Loc: 106, 126, on bark, U3002; U3003; Loc: 132, U3004;

Homalothecium sericeum (Hedw.) Schimp.

Loc: 93, 118, 128, on bark, U3016; U3015; U3017;

***Kindbergia praelonga* (Hedw.) Ochyra

Loc: 90, 91, on bark, U3040; U3042; Loc: 118, on decayed log, U3038; Loc: 91, 94, on soil, U3041; U3036; Loc: 114, 122, on wet rock, U3039; U3001;

***Microeurhynchium pumilum* (Wilson) Ignatov & Vanderp.

Loc: 93, 94, 126, on soil, U3032; U3035; Loc: 93, on bark, U3034; Loc: 130, on rock, U3031;

***Oxyrrhynchium schleicheri* (R.Hedw.) Röhl

Loc: 86, 92, on soil, U3025; U3023; Loc: 103, on bark, U3024;

***Pseudoscleropodium purum* (Hedw.) M. Fleisch.

Loc: 92, 125, on soil, U2994; U2999;

***Rhynchostegium confertum* (Dicks.) Schimp.

Loc: 98, on bark, U2992; Loc: 103, 127, on rock, U2993, U2998;

**Sciuro-hypnum starkei* (Brid.) Ignatov & Huttunen

Loc: 92, 123, on soil, U3012, U3011;

***Scleropodium cespitans* (Müll. Hal.) L.F. Koch

Loc: 94, 123, on soil, U3009; U3007; Loc: 93, 127, on rock, U3008, U3010;

***Scleropodium touretii* (Brid.) L.F. Koch

Loc: 93, on rock, U3022;

Hypnaceae Schimp.

***Calliargonella cuspidata* (Hedw.) Loeske

Loc: 91, on soil, U2832;

***Hypnum cupressiforme* Hedw. var. *cupressiforme*

Loc: 106, 111, 117, on bark, U2960; U2961; Loc: 94, on soil, U2956; Loc: 121, 131, on decayed log, U2958; U2959;

***Hypnum cupressiforme* Hedw. var. *filiforme* Brid.

Loc: 94, 109, 116, 119, 128, on bark, U2941; U2945; U2943; U1942; U2944;

***Hypnum cupressiforme* Hedw. var. *lacunosum* Brid.

Loc: 87, 123, on bark, U2952; U2950; Loc: 90, on log, U2949; Loc: 117, on soil, U2953;

***Hypnum cupressiforme* Hedw. var. *resupinatum* (Taylor) Schimp.

Loc: 87, 106, 110, on bark, U2947; U2948; U2946;

**Hypnum cupressiforme* Hedw. var. *subjulaceum* Molendo

Loc: 85, on bark, U2955; Loc: 117, on soil, U2954;

***Hypnum imponens* Hedw.

Loc: 108, on bark, U2940;

■ *Pseudotaxiphyllum elegans* (Brid.) Z.Iwats

Loc: 111, on bark, U2935;

Hylocomiaceae M. Fleisch.

***Ctenidium molluscum* (Hedw.) Mitt

Loc: 120, on soil, U2475;

Plagiotheciaceae (Broth.) M. Fleisch.

***Plagiothecium cavifolium* (Brid.) Z.Iwats.

Loc: 111, 112, on bark, U2938, U2937;

***Plagiothecium laetum* Schimp.

Loc: 113, 131, on soil, U2934; U2936;

Cryphaeaceae Schimp.

***Cryphaea heteromalla* (Hedw.) D. Mohr

Loc: 92, 99, on bark, U2838; U2839;

Leucodontaceae Schimp.

***Antitrichia curtispindula* (Hedw.) Brid.

Loc: 109, 117, on bark, U2991; U2866;

Leucodon sciuroides (Hedw.) Schwägr.

Loc: 87, 90, 99, 100, 113, on bark, U2868; U2837; U2870; U2867;

Leptodontaceae Schimp.

***Leptodon smithii* (Hedw.) F.Weber & D.Mohr

Loc: 89, 93, 99, 126, on bark, U2877; U2875; U2874; U2878; Loc: 103, on rock, U2876;

Neckeraceae Schimp.

***Alleniella besseri* (Lobarz.) S.Olsson, Enroth & D.Quandt

Loc: 103, 131, on rock, U2872; U2873;

***Alleniella complanata* (Hedw.) S. Olsson, Enroth & D.Quandt

Loc: 112, on bark, U2879; Loc: 132, on soil, U2880;

***Neckera pumila* Hedw.

Loc: 99, on bark, U2871;

Thamnobryum alopecurum (Hedw.) Gangulee

Loc: 103, 127, on rock, U2883, U2885; Loc: 130, on soil, U2884;

Lembophyllaceae Broth.

Isothecium alopecuroides (Lam. ex Dubois) Isov.

Loc: 93, on bark, U3006; Loc: 113, on rock, U3005;

***Isothecium holtii* Kindb.

Loc: 108, on rock, U2996; Loc: 111, on bark, U2997;

Anomodontaceae Kindb.

***Anomodon viticulosus* (Hedw.) Hook. & Taylor

Loc: 131, on rock, U2882;

4. Results and Discussion

As a results of bryofloristic study in the area; in a total 112 taxa belonging to 22 families and 60 genera were determined. Among them *Weissia multicapsularis* (Sm.) Mitt. (Figure 2) was recorded the first time from Turkey with the this

study (Ursavaş and Keçeli, 2018). And also *Pseudotaxiphyllum elegans* (Brid.) Z.Iwats and *Brachythecium capillaceum* (F.Weber & D.Mohr) Giacom are recorded for the second time from Turkey.

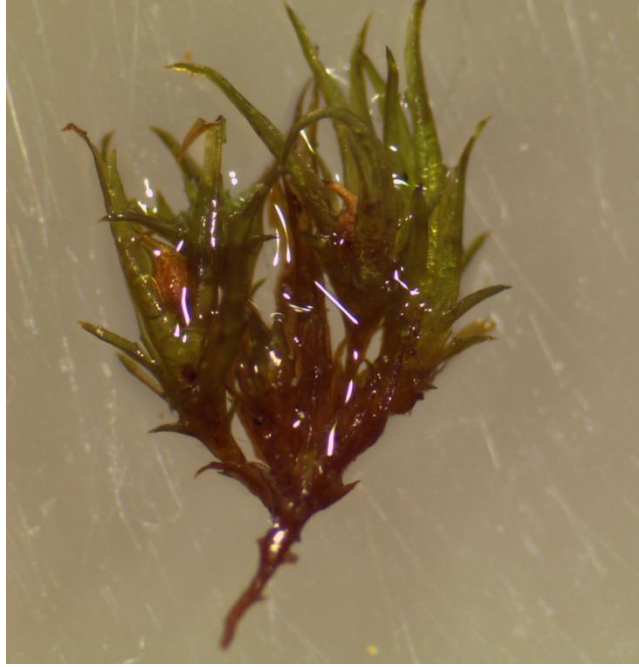


Figure 2. Photo of *Weissia multicapsularis* (original)

Furthermore, according to the Henderson (1961)'s Turkey grid system, 13 of these taxa are new records for the A1 grid square: *Atrichum tenellum* (Röhl.) Bruch & Schimp., *Ceratodon conicus* (Hampe) Lindb., *Campylopus subulatus* Schimp. ex Milde, *Dicranella subulata* (Hedw.) Schimp., *Fissidens viridulus* var. *viridulus* (Sw. ex anon.) Wahlenb., *Orthotrichum patens* Bruch & Brid., *Pseudoleskeella catenulata* (Brid. ex Schrad.) Kindb., *Stegonia latifolia* (Schwägr.) Venturi ex Broth., *Sciuro-hypnum starkei* (Brid.) Ignatov & Huttunen, *Syntrichia latifolia* (Bruch ex Hartm.) Huebener, *Tortula canescens* Mont., *Tortula vahliana* (Schultz) Mont., *Hypnum cupressiforme* Hedw. var. *subjulaceum* Molendo (Çetin and Uyar, 1997; Çetin, 1999; Uyar and Çetin, 2006; Keçeli and Çetin, 2006; Ören et al., 2010, 2012; Keçeli et al., 2012; Ros et al., 2013).

So far, there has been only two bryophyte study in the province of Bursa (Çetin, 1999 and Can Gözcü et al., 2018). Bryophyte studies in Bursa were examined and 69 taxa from these studies are new records for the Bursa province.

According to Table 1. the richest families in terms of a number of taxa, respectively, are: Pottiaceae (27), Brachytheciaceae (15), Bryaceae (9), Hypnaceae (8), Amblystegiaceae (6), Orthotrichaceae (6), Polytrichaceae (5), Mniaceae (5). *Tortula* (Pottiaceae) is the most species rich genus in the study area. The present study compared with the other studies that are closest to the study area. The comparison of the floristic studies according to the families is given in Table 2 and the genus level is given in Table 3.

Table 1. The distributions of taxa on the family level in the study area

Family No	Family	The number of genus	Genus	The number of taxa
1	Brachytheciaceae	11	<i>Brachythecium</i>	2
			<i>Cirriphyllum</i>	1
			<i>Eurhynchium</i>	1
			<i>Homalothecium</i>	3
			<i>Kindbergia</i>	1
			<i>Microeurhynchium</i>	1
			<i>Oxyrrhynchium</i>	1
			<i>Pseudoscleropodium</i>	1
			<i>Rhynchostegium</i>	1
			<i>Sciuro-hypnum</i>	1
			<i>Scleropodium</i>	2
2	Pottiaceae	10	<i>Barbula</i>	2
			<i>Didymodon</i>	3
			<i>Gymnostomum</i>	1
			<i>Leptobarbula</i>	1
			<i>Stegonia</i>	1
			<i>Syntrichia</i>	4
			<i>Tortella</i>	2
			<i>Tortula</i>	7
			<i>Trichostomum</i>	1
			<i>Weissia</i>	5
3	Amblystegiaceae	5	<i>Amblystegium</i>	1
			<i>Drepanocladus</i>	1
			<i>Leptodictyum</i>	1
			<i>Campylopus</i>	1
			<i>Pseudoleskeella</i>	2
4	Polytrichaceae	3	<i>Atrichum</i>	2
			<i>Pogonatum</i>	1
			<i>Polytrichum</i>	2
5	Ditrichaceae	3	<i>Ceratodon</i>	2
			<i>Ditrichum</i>	1
			<i>Pleuridium</i>	1
6	Bryaceae	3	<i>Bryum</i>	3
			<i>Imbricobryum</i>	1
			<i>Ptychostomum</i>	5
7	Mniaceae	3	<i>Epipterygium</i>	1
			<i>Plagiomnium</i>	3
			<i>Rhizomnium</i>	1
8	Hypnaceae	3	<i>Calliargonella</i>	1
			<i>Hypnum</i>	6
			<i>Pseudotaxiphyllum</i>	1
9	Neckeraceae	3	<i>Alleniella</i>	2
			<i>Neckera</i>	1
			<i>Thamnobryum</i>	1
10	Grimmiaceae	2	<i>Grimmia</i>	3
			<i>Schistidium</i>	1
11	Dicranaceae	2	<i>Dicranella</i>	2
			<i>Dicranum</i>	1
12	Leucodontaceae	2	<i>Antitrichia</i>	1
			<i>Leucodon</i>	1
13	Orthotrichaceae	1	<i>Orthotrichum</i>	6
14	Hylocomiaceae	1	<i>Ctenidium</i>	1
15	Plagiotheciaceae	1	<i>Plagiothecium</i>	2
16	Cryphaeaceae	1	<i>Cryphaea</i>	1
17	Leptodontaceae	1	<i>Leptodon</i>	1
18	Funariaceae	1	<i>Funaria</i>	1
19	Fissidentaceae	1	<i>Fissidens</i>	4
20	Rhabdoweisiaceae	1	<i>Dicranoweisia</i>	1
21	Lembophyllaceae	1	<i>Isothecium</i>	2
22	Anomodontaceae	1	<i>Anomodon</i>	1
	TOTAL	60		112

Table 2. Comparison with the families in some bryophyte flora studies in A1 square.

Bryophyte Studies	The Moss Flora of Kocaçay Delta Floodplain Forest in Turkey (2019)		The Moss Flora of İğneada Floodplain Forests National Park (2018)		Contribution to The Bryophyte Flora of European (2008)		Contribution to The Bryophyte Flora of Turkish Thrace (2003)	
	The number of taxa	%	The number of taxa	%	The number of taxa	%	The number of taxa	%
Pottiaceae	27	24	20	19	33	26.2	46	36.8
Brachytheciaceae	15	13	14	13.3	19	15.1	18	14.4
Bryaceae	9	8	6	5.7	14	11.1	11	8.8
Hypnaceae	8	7	6	5.7	3	2.4	4	3.2
Amblystegiaceae	6	5.3	2	1.9	5	4	4	3.2
Orthotrichaceae	6	5.3	9	8.6	10	7.9	10	8
Polytrichaceae	5	4.4	9	8.6	4	3.2	4	3.2
Mniaceae	5	4.4	4	3.9	4	3.2	1	0.8
Fissidentaceae	4	4.5	4	3.9	7	5.6	-	-
Neckeraceae	4	4.5	2	1.9	3	2.4	-	-
Grimmiaceae	4	4.5	4	3.9	5	4	4	3.2
Dicranaceae	4	4.5	2	1.9	2	1.6	4	3.2
Ditrichaceae	3	2.6	2	1.9	5	4	5	4
Leucodontaceae	2	1.7	2	1.9	2	1.6	1	0.8
Plagiotheciaceae	2	1.7	2	1.9	2	1.6	-	-
Lembophyllaceae	2	1.7	1	0.9	1	0.8	1	0.8
Hylocomiaceae	1	0.8	-	-	-	-	-	-
Cryphaeaceae	1	0.8	1	0.9	-	-	-	-
Leptodontaceae	1	0.8	-	-	-	-	-	-
Funariaceae	1	0.8	4	3.9	1	0.8	1	0.8
Anomodontaceae	1	0.8	2	1.9	1	0.8	-	-
Rhabdoweisiaceae	1	0.8	-	-	-	-	-	-

Table 3. Compared with the genus in some bryophyte flora studies in A1 square

Bryophyte Studies	The Moss Flora of Kocaçay Delta Floodplain Forest in Turkey (2019)		The Moss Flora of İğneada Floodplain Forests National Park (2018)		Contribution to The Bryophyte Flora of European (2008)		Contribution to The Bryophyte Flora of Turkish Thrace (2003)	
	The number of taxa	%	The number of taxa	%	The number of taxa	%	The number of taxa	%
<i>Tortula</i>	7	6.2	5	4.8	5	4	15	12
<i>Hypnum</i>	6	5.4	4	3.8	2	1.6	2	1.6
<i>Orthotrichum</i>	6	5.4	9	8.6	9	7.1	9	7.2
<i>Weissia</i>	5	4.4	4	3.8	3	2.4	4	3.2
<i>Ptychostomum</i>	5	4.4	3	2.9	-	-	-	-
<i>Syntrichia</i>	4	3.6	4	3.8	5	4	-	-
<i>Fissidens</i>	4	3.6	4	3.8	7	5.6	10	8
<i>Homalothecium</i>	3	2.6	2	1.9	4	3.2	3	2.4
<i>Didymodon</i>	3	2.6	-	-	-	-	-	-
<i>Bryum</i>	3	2.6	2	1.9	14	11	11	8.8
<i>Dicranella</i>	3	2.6	1	1	1	0.8	2	1.6
<i>Grimmia</i>	3	2.6	3	2.9	2	1.6	3	2.4
<i>Plagiomnium</i>	3	2.6	3	2.9	1	0.8	-	-
<i>Brachythecium</i>	2	1.8	4	3.8	3	2.4	3	2.4
<i>Scleropodium</i>	2	1.8	2	1.9	1	0.8	3	2.4
<i>Barbula</i>	2	1.8	2	1.9	1	0.8	2	1.6
<i>Tortella</i>	2	1.8	-	-	-	-	-	-
<i>Pseudoleskeella</i>	2	1.8	-	-	-	-	-	-
<i>Atrichum</i>	2	1.8	4	3.8	2	1.6	-	-
<i>Polytrichum</i>	2	1.8	3	2.9	2	1.6	1	0.8
<i>Ceratodon</i>	2	1.8	-	-	-	-	-	-
<i>Alleniella</i>	2	1.8	-	-	-	-	-	-

According to Table 2, it is expected that the families of Pottiaceae and Brachytheciaceae will share the first two places. The Orthotrichaceae family is highly represented in the European continent (9-10), while the Kocaçay Delta (6) remains low (Asia). This may be due to continental differences or tree species diversity and age differences.

According to Table 3, there are differences in the number of taxa determined from research areas. This can probably be related to the size of the study areas.

Acknowledgements: This study was financially supported by the Scientific and Technological Research Council of Turkey (TÜBİTAK) (Project No: 115Z364). We would like to thank to Richard H. Zander and Des Callagha for his help to confirm the determination of *Weissia multicapsularis*.

Annotation: This study was presented as an Oral Presentation at the International Symposium of Ecology 19-23 June 2018 in Kastamonu, Turkey, and published in the Abstract Book of the Symposium.

References

- Aleffi M. Tacchi R. Cortini Pedrotti C. 2008. Check-list of Hornworts, Liverworts and Mosses of Italy. *Bocconea*. 22: 5-254.
- Corbière L. 1905. Muscinées des environs de Constantine. *Comptes rendus de l'association Française pour l'avancement des sciences*. pp. 487.
- Crum H. 1973. Mosses of the Great Lakes forest. University of Michigan. Michigan, Amerika. pp. 404.
- Crum H.A. Anderson L.E. 1981. Mosses of Eastern North America. Vol. 1-2., New York: Columbia University Press.
- Çetin B. 1999. The Moss Flora of the Uludağ National Park (Bursa/Turkey), Ankara Üniversitesi Biyoloji Anabilim Dalı. Ankara. pp. 193.
- Çetin B. Uyar G. 1997. The Moss Flora of Sinop and Its Environs (Ayancık, Boyabat and Gerze). *Turkish Journal of Botany*. 21: 231-244.
- Eken G. Bozdoğan M. İsfendiyaroğlu S. Kılıç D.T. Lise Y. 2006. Türkiye'nin Önemli Doğa Alanları. Doğa Derneği. Ankara.
- Greven H.C. 2003. *Grimmias of The World*. Leiden: Backhuys Publishers. The Netherlands. pp. 250.
- Henderson D.M. 1961. Contributions to the Bryophyte Flora of Turkey: IV. Notes from the Royal Botanic Garden Edinburgh, 23: 263-278.
- Heyn C.C. Herrnstadt I. 2004. The Bryophyte Flora of Israel and Adjacent Regions. The Israel Academy of Sciences and Humanities, Jerusalem. pp. 719.
- Hodgetts N.G. 2015. Checklist and contry status of European bryophytes towards a new Red List for Europe. *Irish Wildlife Manuals*, No. 84. National Parks and Wildlife Service, Department of Arts, Heritage and the Gaeltacht, Ireland.
- Işın Z. Ursavaş S. 2018. The Moss Flora of İğneada Floodplain Forests National Park (Demirköy, Kırklareli) Turkey. *Anatolian Bryology*. 4:2, 92-106.
- Keçeli T. Çetin B. 2006. A Contribution to the Liverwort Flora of Western Black Sea Region, Northern Turkey, and a new record (*Cephaloziella dentata*, Cephaloziellaceae) to Southwest Asia. *Cryptogamie Bryologie*. 27:4, 459-470.
- Kavgacı A. Özalp G. Özhayat N. 2007. Flora of İgneada Floodplain Forests (Longozes) and Their Surroundings. *JFFIU*. 57: 60-89.
- Keçeli T. Ören M. Uyar G. 2012. Türkiye Ciğerotları (Marchantiophyta) Florası için İki Yeni Kayıt: *Cephalozia lunulifolia* (Cephaloziaceae) ve *Lophocolea fragrans* (Lophocoleaceae), 21. Ulusal Biyoloji Kongresi, Bildiriler Kitabı. PB 161, ss. 576-577. 3-7 Eylül 2012, İzmir, Özetler Kitabı. pp. 576-577.
- Lara F. Garilleti R. Goffinet B. Draper I. Medina R. Vigalondo B. Mazimpaka V. 2016. *Lewinskya*, a New Genus to Accommodate the Phaneroporou and Monoicous Taxa of Orthotrichum (Bryophyta, Orthotrichaceae). *Cryptogamie, Bryologie*. 37:4, 361-382.
- Lawton E. 1971. Moss Flora of Pasific Northwest. *Journal of Hattori Botanical Garden Laboratory, Nichinan*. pp. 760.
- Lockhart N.D. Hodgetts N.G. Holyoak D.T. 2012. Rare and threatened bryophytes of Ireland. *National Museums Northern Ireland, Holywood, Co Down*.
- Lüth M. 2006. *Bildatlas der Moose Deutschlands, Faszikel 1. Grimmiaceae*. Freiburg. Deutschland.
- Lüth M. 2006. *Bildatlas der Moose Deutschlands, Faszikel 2. Dicranaceae - Miniaceae - Politrachaceae*. Freiburg. Deutschland.
- Lüth M. 2006. *Bildatlas der Moose Deutschlands, Faszikel 3. Pottiaceae*. Freiburg. Deutschland.

- Lüth M. 2007. Bildatlas der Moose Deutschlands, Faszikel 4. Bryaceae - Disceliaceae - Ephemeraceae - Funariaceae - Splachnaceae. Freiburg. Deutschland.
- Lüth M. 2008. Bildatlas der Moose Deutschlands, Faszikel 5. Timmiaceae. Freiburg. Deutschland.
- Lüth M. 2009. Bildatlas der Moose Deutschlands, Faszikel 6. Amblystegiaceae - Thuidiaceae. Freiburg. Deutschland.
- Lüth M. 2010. Bildatlas der Moose Deutschlands, Faszikel 7. Brachytheciaceae - Entodontaceae - Hypnaceae - Plagiotheciaceae - Sematophyllaceae. Freiburg. Deutschland.
- Ören M. Uyar G. Keçeli T. 2010. *Anomodon longifolius* (Anomodontaceae, Bryopsida) New To The Bryophyte Flora of Turkey. Turkish Journal of Botany. 34: 141-145.
- Ören M. Uyar G. Keçeli T. 2012. The bryophyte flora of the western part of the Küre Mountains (Bartın, Kastamonu), Turkey. Turkish Journal of Botany. 36: 538-557.
- Pedrotti C.C. 2001. Flora dei muschi d'Italia, Sphagnopsida, Andreaopsida, Bryopsida (I parte). Antonio Delfino Editore Medicina-Scienze. pp. 817.
- Pedrotti C.C. 2006. Flora dei muschi d'Italia, Bryopsida (II parte). Roma: Antonia Delfino Editore. Antonio Delfino Editore Medicina-Scienze. pp. 817-1235.
- Plášek V. Sawicki J. Ochyra R. Szczecińska M. Kulik T. 2015. New taxonomical arrangement of the traditionally conceived genera *Orthotrichum* and *Ulota* (Orthotrichaceae, Bryophyta). Acta Musei Silesiae, Scientiae Naturales. 64: 169-174.
- Porley R. 2013. England's rare mosses and liverworts. Princeton (NJ), Woodstock (UK): Princeton University Press.
- Ros R.M. Mazimpaka V. Abou-Salama U. Aleffi M. Blockeel T.L. Brugués M. Cros R.M. Dia M.G. Dirkse G.M. Draper I. et al., 2013. Mosses of the Mediterranean, an annotated checklist. Cryptogamie Bryologie. 34: 99-283.
- Saçın Y. 2010. Kocaçay Deltası ve Uluabat Gölünün Uzaktan Algılama Metodları Kullanılarak İncelenmesi. s. 92. Yüksek Lisans Tezi.
- Schuck A. Parviainen J. Bücking W. 1994. A review of approaches to forestry research on structure, succession and biodiversity of a disturbed and semi-natural forests and woodland in Europe. European Forest Institute Working Paper 3, Joensuu, pp. 64.
- Smith A.J.E. 1980. The Moss Flora of Britain and Ireland. Cambridge University Press. pp. 706.
- Smith A.J.E. 2004. The Moss Flora of Britain and Ireland. Cambridge University Press. pp. 1012.
- URL1. Bursa-Karacabey Ovakorusu Celal Acar Yaban Hayvanları Kurtarma ve Rehabilitasyon Merkezi. 2019. Website: <http://bolge2.ormansu.gov.tr/2bolge/AnaSayfa/CelalAcarYabanHayati.aspx?sflang=tr> [Accessed: 23 January 2019].
- URL2. Karacabey Longoz Ormanları. 2019. Website: <http://www.bursa.com.tr/karacabey-longozu-576.html> [Accessed: 22 January 2019].
- Ursavaş S. Keçeli T. 2018. *Weissia multicapsularis*, a rare moss species new to Turkey and Asia. Plant Biosystems. 1-4. Doi: 10.1080/11263504.2018.1536086.
- Uyar G. Çetin B. 2006. Contribution to the moss flora of Turkey: Western Black Sea Region (Bolu, Katamonu, Karabük, Bartın and Zonguldak). International Journal of Botany. 2:3, 229-241.
- Watson E. V. 1981. British Mosses and Liverworts. Cambridge: Cambridge University Press.
- Wenger E. Zinke A. Gutzweiler K.A. 1990. Present Situation of the European Floodplain Forests. For Ecology and Management. 33:34, 5-12.